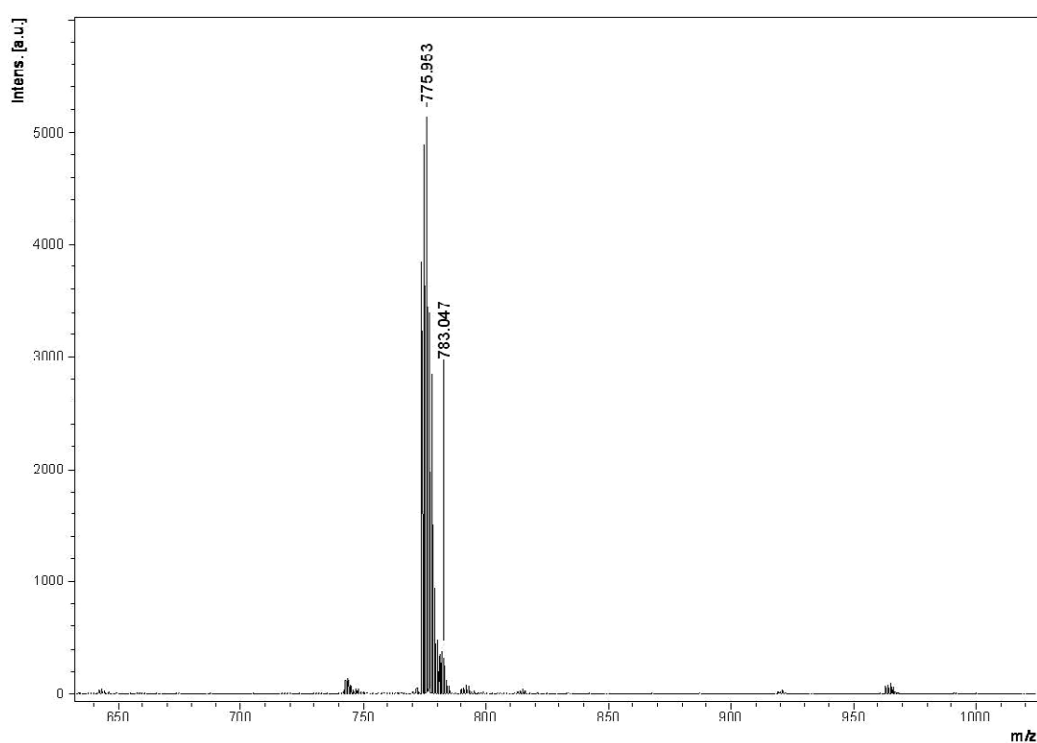


Electronic Supplementary Information

**A New optical/electrochemical Na⁺ Sensor Based on Platinum(II)
Complexes Containing Crown Ether Annelated Dithiolate Ligands**

Yong Ji, Rui Zhang, Xiao-Bo Du, Jing-Lin Zuo* and Xiao-Zeng You



* To whom correspondence should be addressed. Email: zuojl@nju.edu.cn
Fax: +86-25-83314502.
Nanjing University.

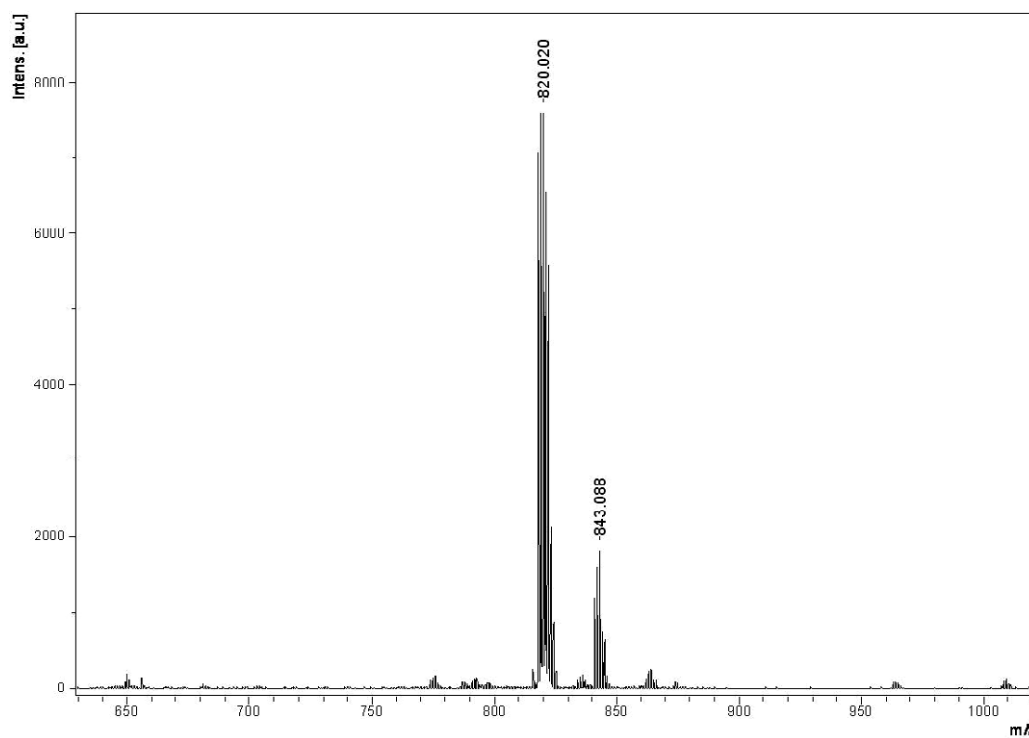
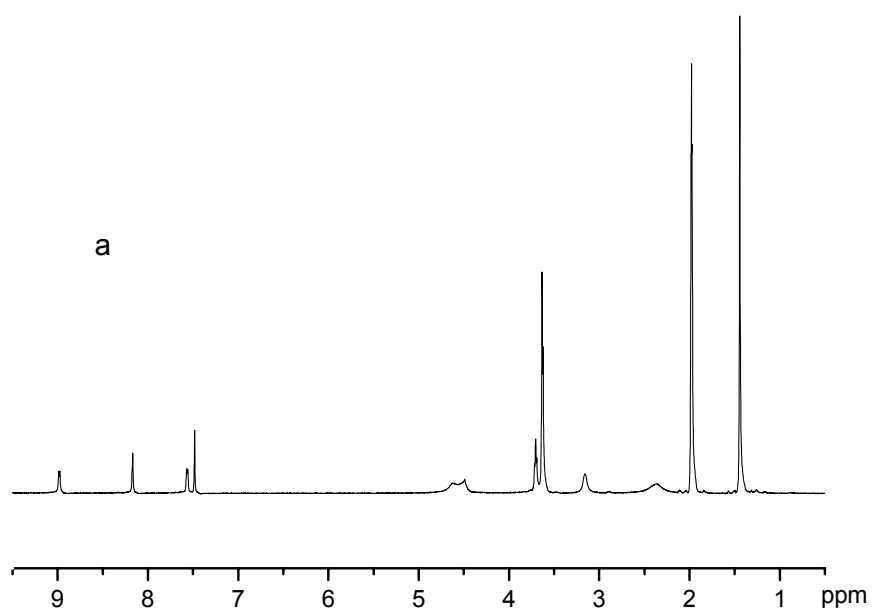
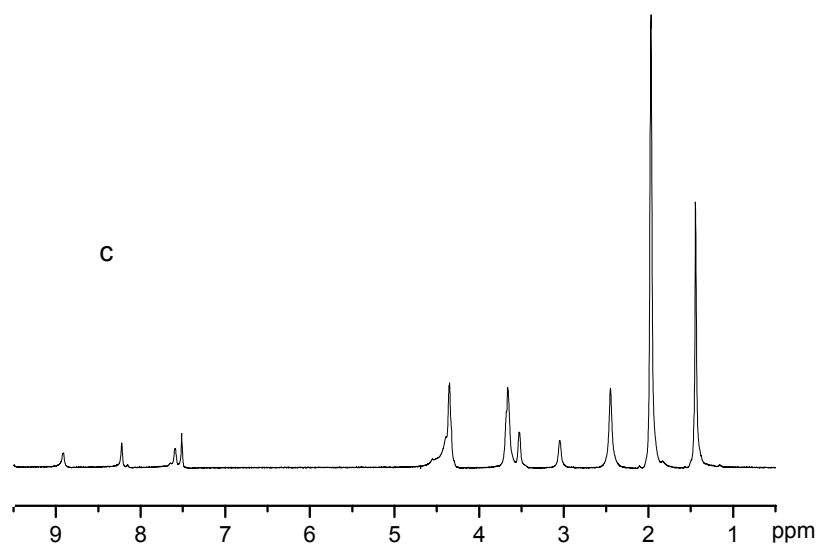
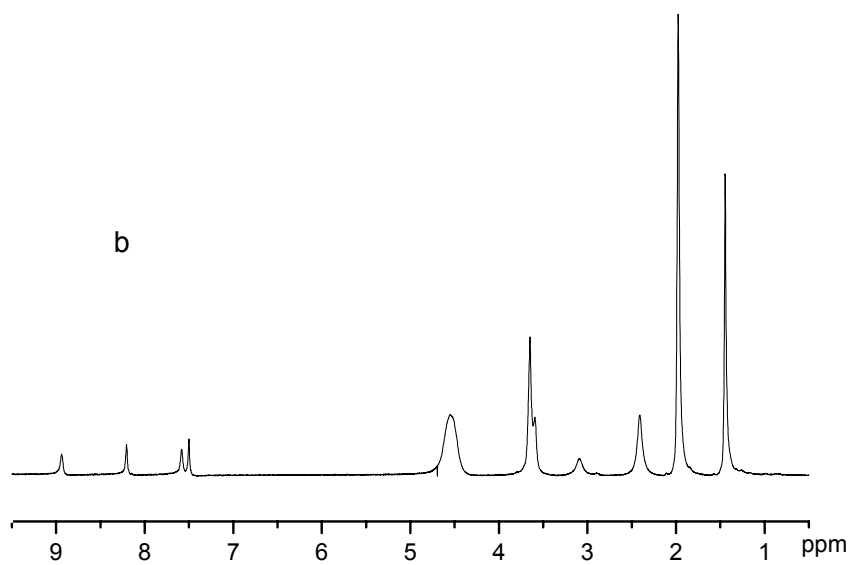


Fig. S1 MS spectra of complex **1** upon addition of LiClO_4 (top) and complex **2** upon addition of NaClO_4 (down).





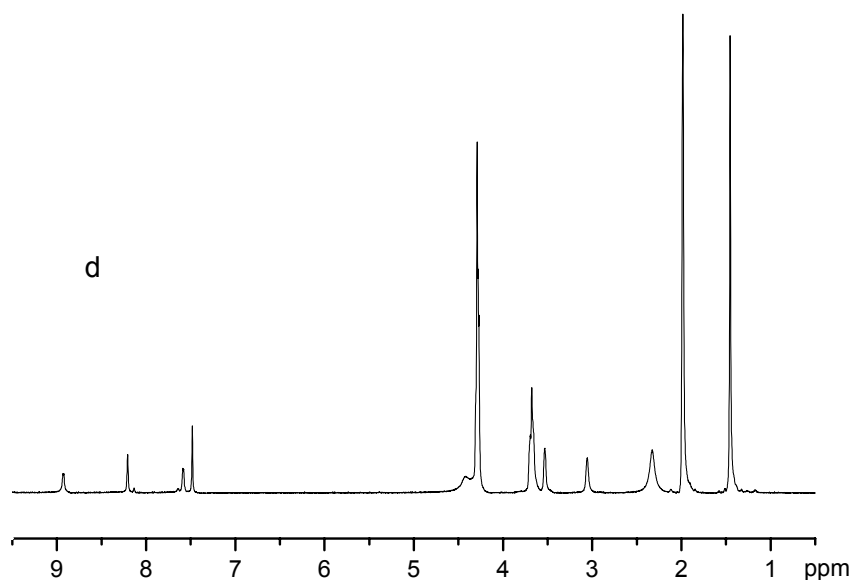


Fig. S2 ¹H NMR spectra of complex **2** with different Na⁺ concentrations (a) 0, (b) 1, (c) 5, (d) 10 eq. NaClO₄ in CDCl₃/CD₃CN (1:1, v/v).

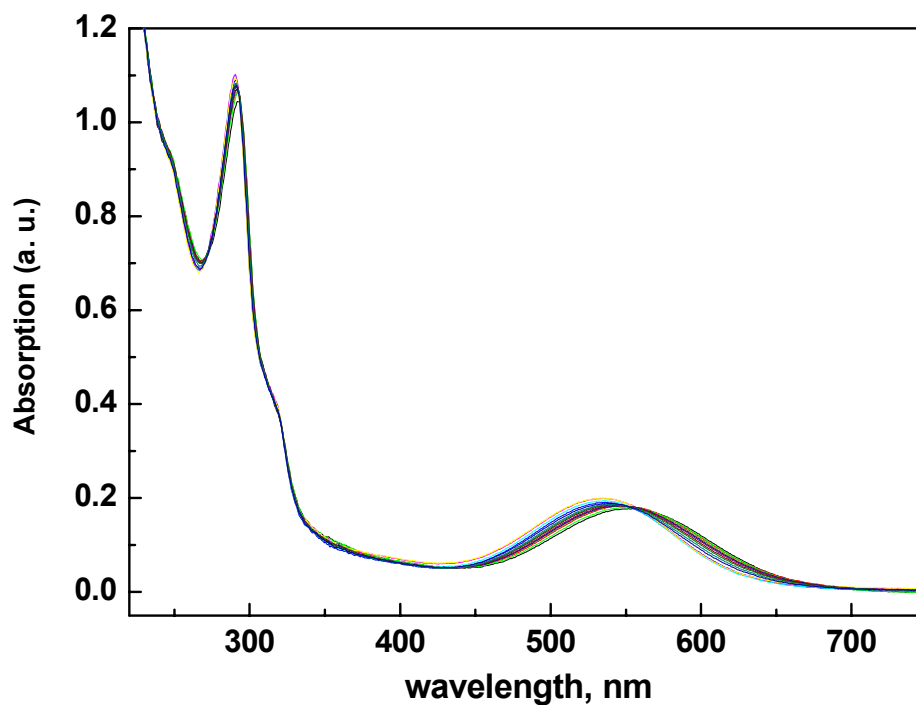


Fig. S3 UV-vis absorption spectral changes of complex **2** (concentration = 4×10^{-5} mol dm⁻³) in acetonitrile upon addition of KPF₆.

Table S1. Absorption bands for complex **2** as a function of different solvents.

solvents	UV-vis λ_{max} , nm	ϵ , $10^4 \text{ M}^{-1} \text{ cm}^{-1}$
CH ₃ CN	555	0.824
	292	4.527
DMF	567	0.622
	297	3.632
CH ₂ Cl ₂	586	0.841
	298	4.708
CHCl ₃	594	0.831
	298	4.224