

Supplementary information for b801351a

Technical files:

Final statistics for integration protocols, Comp1.ls to Comp8.ls

Figures:

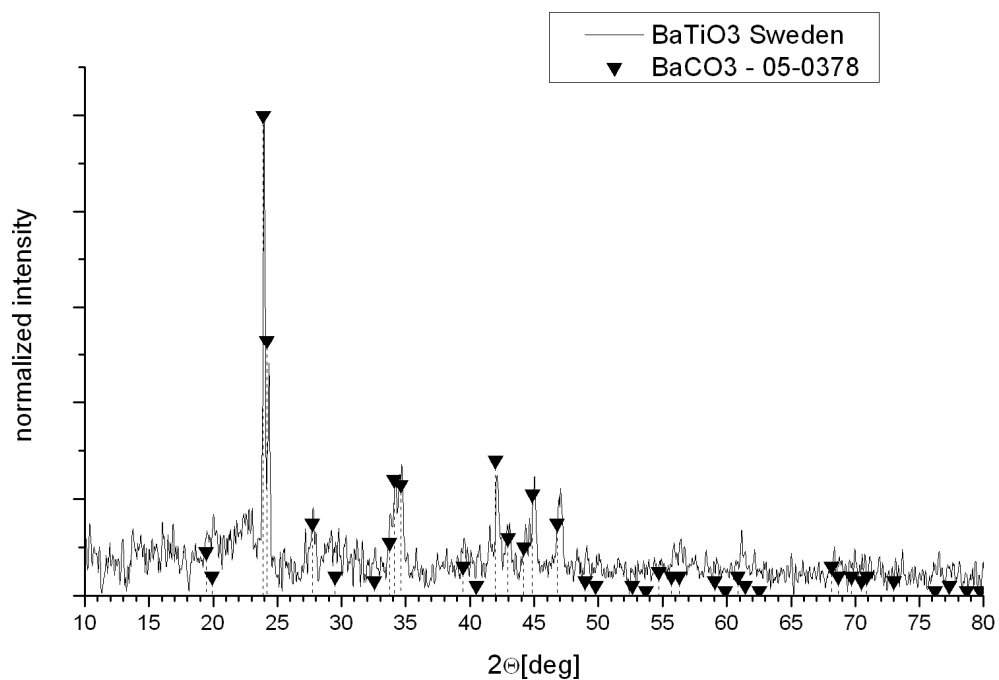


Fig. FS-1 X-ray powder pattern of the 1M solution of

$(\text{Ba}_{1-x}\text{Eu}_x)_2\text{Ti}_2(\text{thd})_4(\text{O}^n\text{Pr})_{8+x}(\text{}^n\text{PrOH})_{2-x}$, in ${}^n\text{PrOH}$ immersed into boiling water

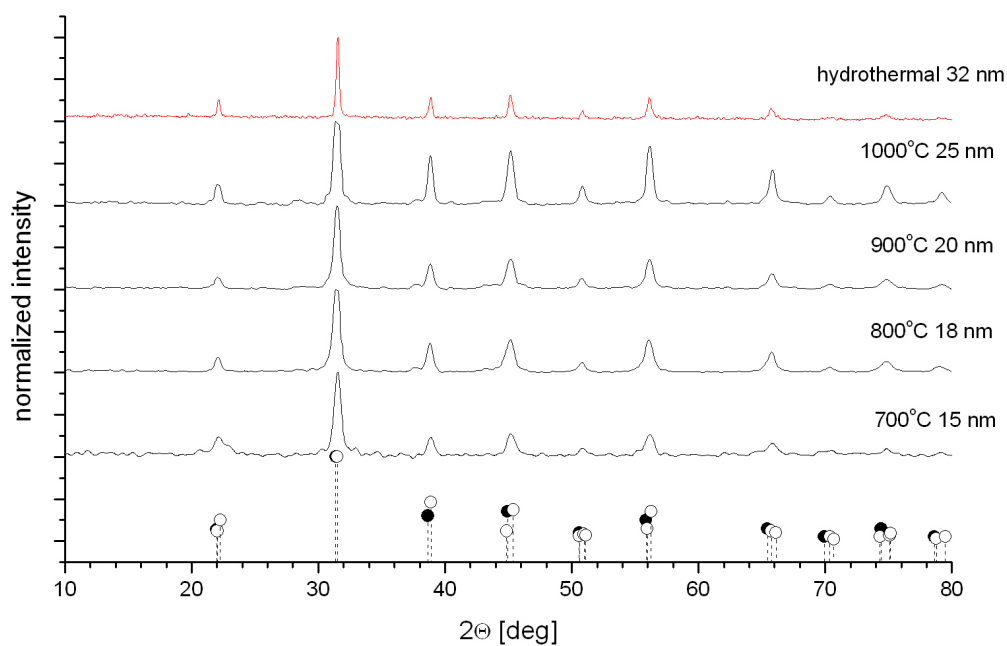
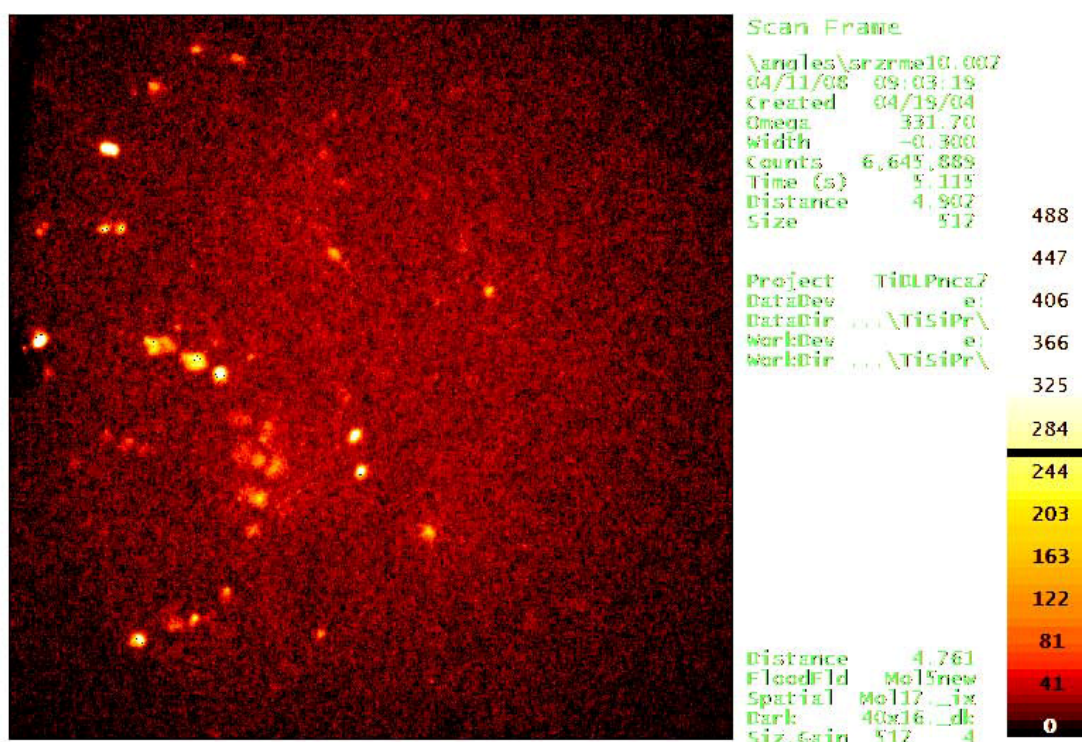
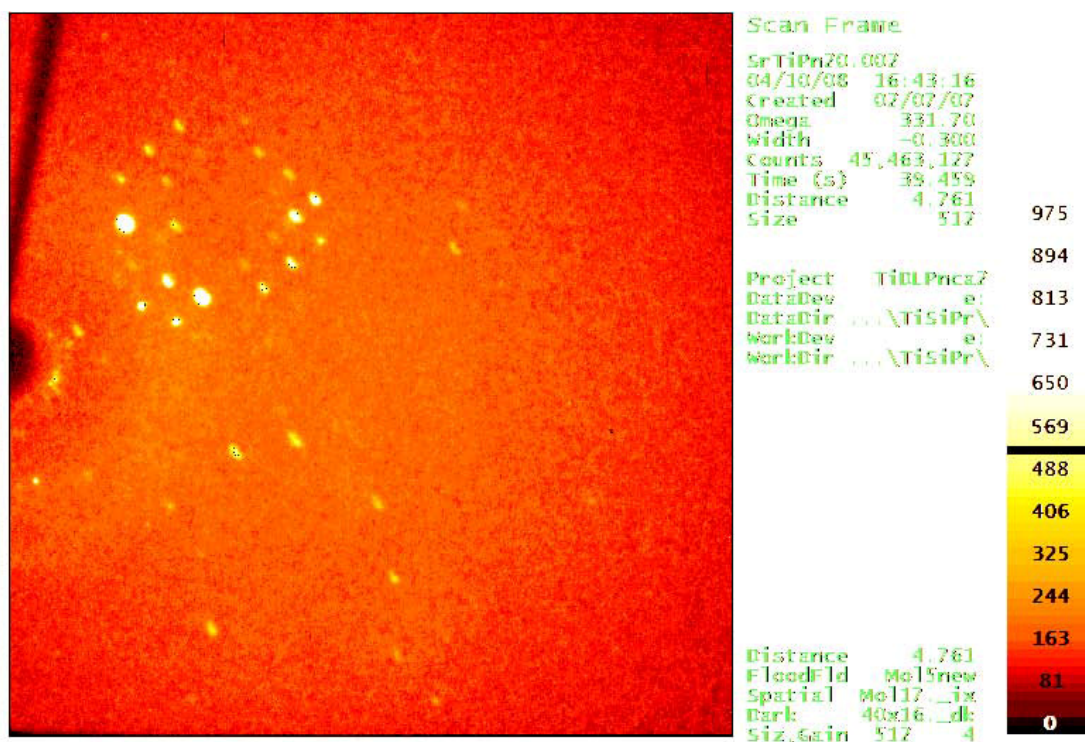


Fig. FS-2 X-ray powder patterns of Nanoparticles heat-treated at different temperatures and average particle size calculated using Sherrer equation



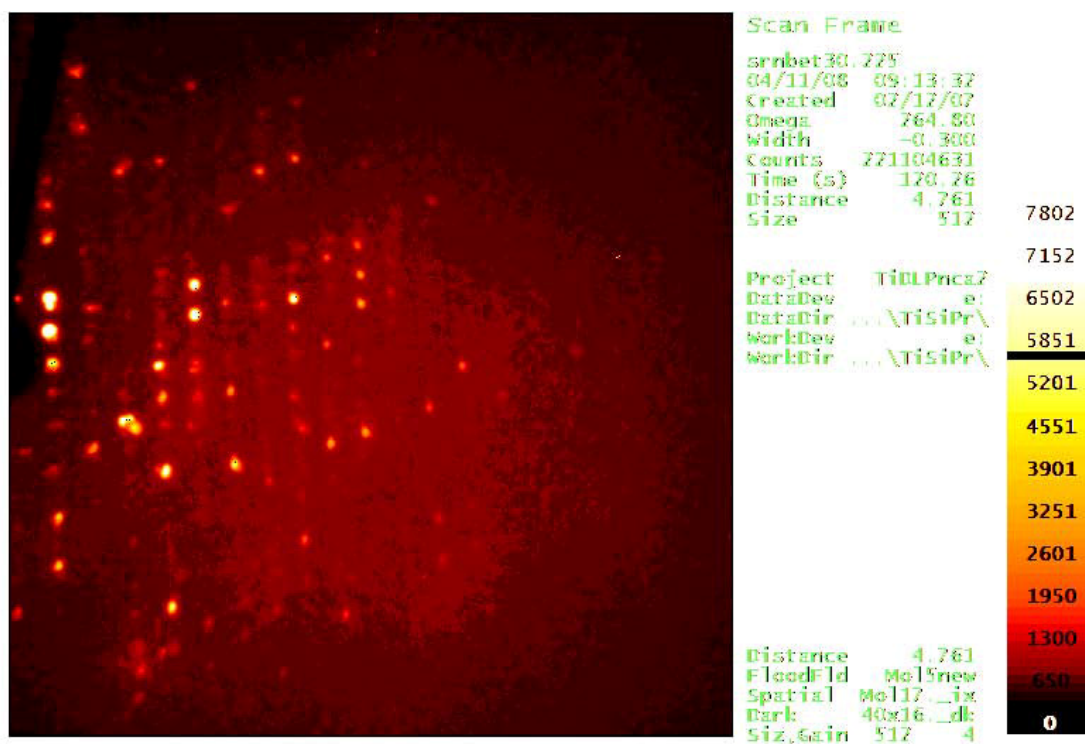
SLU - Kemi - 04/11/08

Fig. FS-3 Typical diffraction frame Compound 2



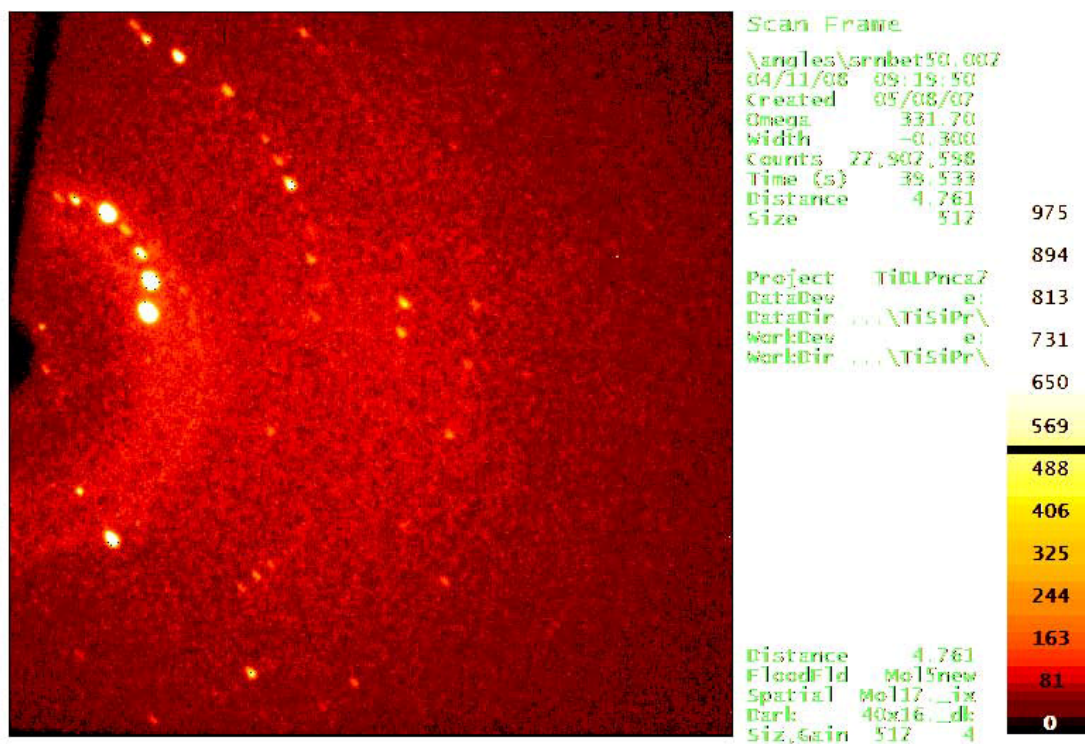
SLU - Kemi - 04/10/08

Fig. FS-4 Typical diffraction frame Compound 3



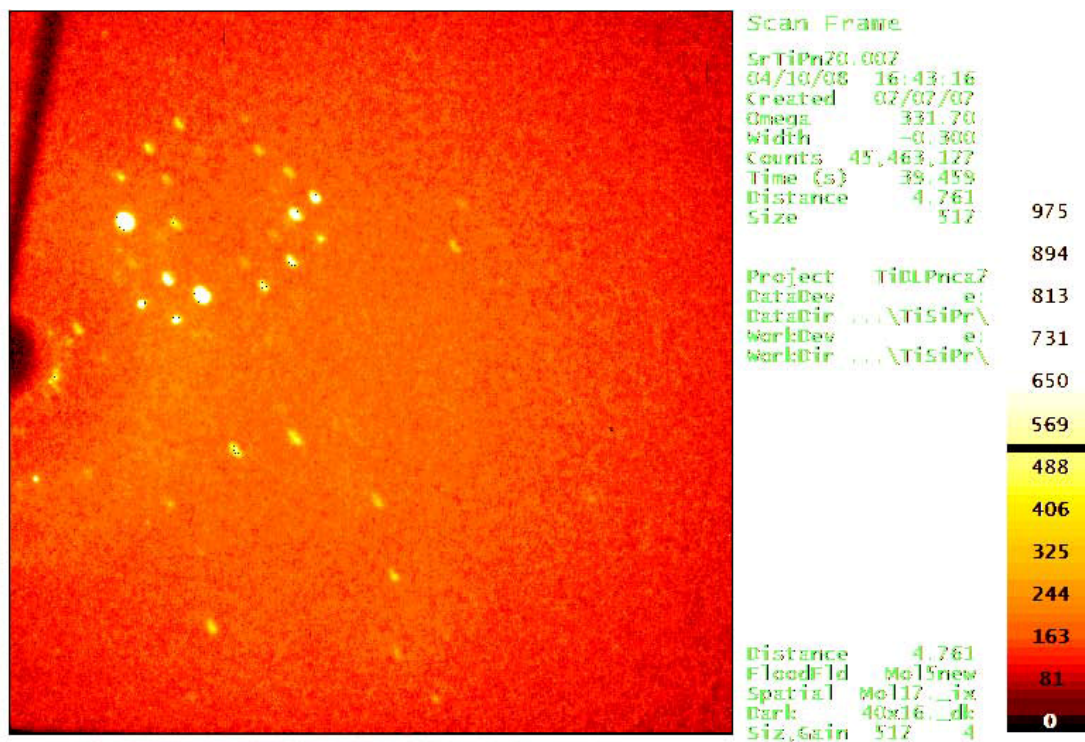
SLU - Kemi - 04/11/08

Fig. FS-5 Typical diffraction frame Compound 4



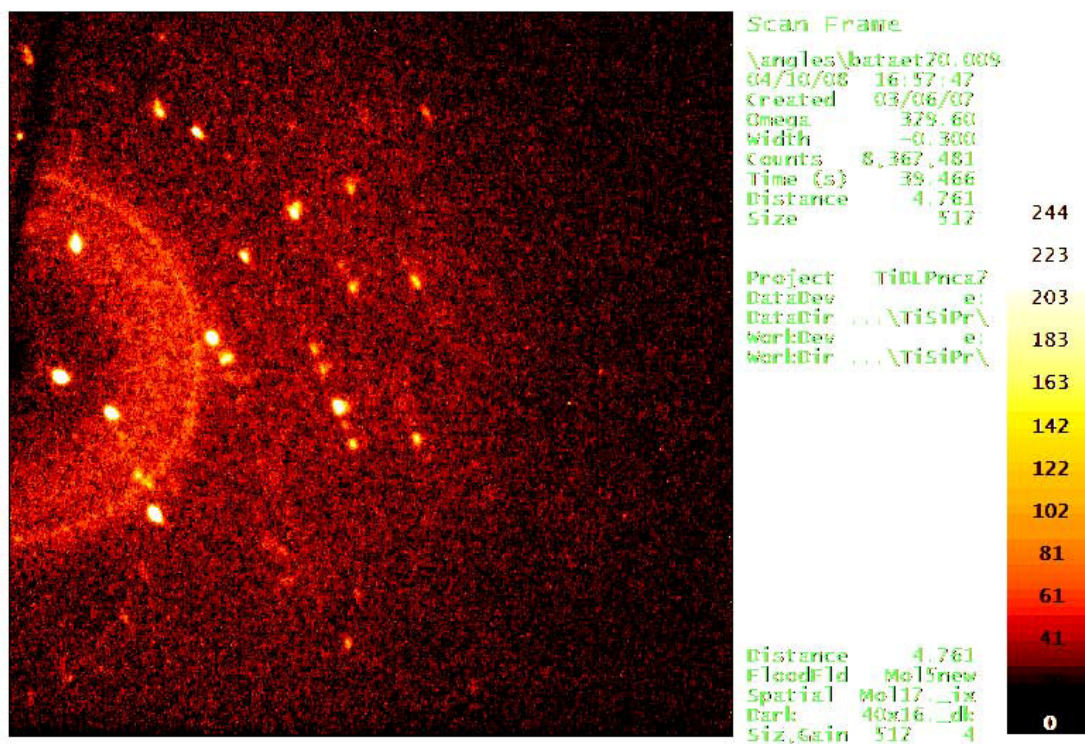
SLU - Kemi - 04/11/08

Fig. FS-6 Typical diffraction frame Compound 5



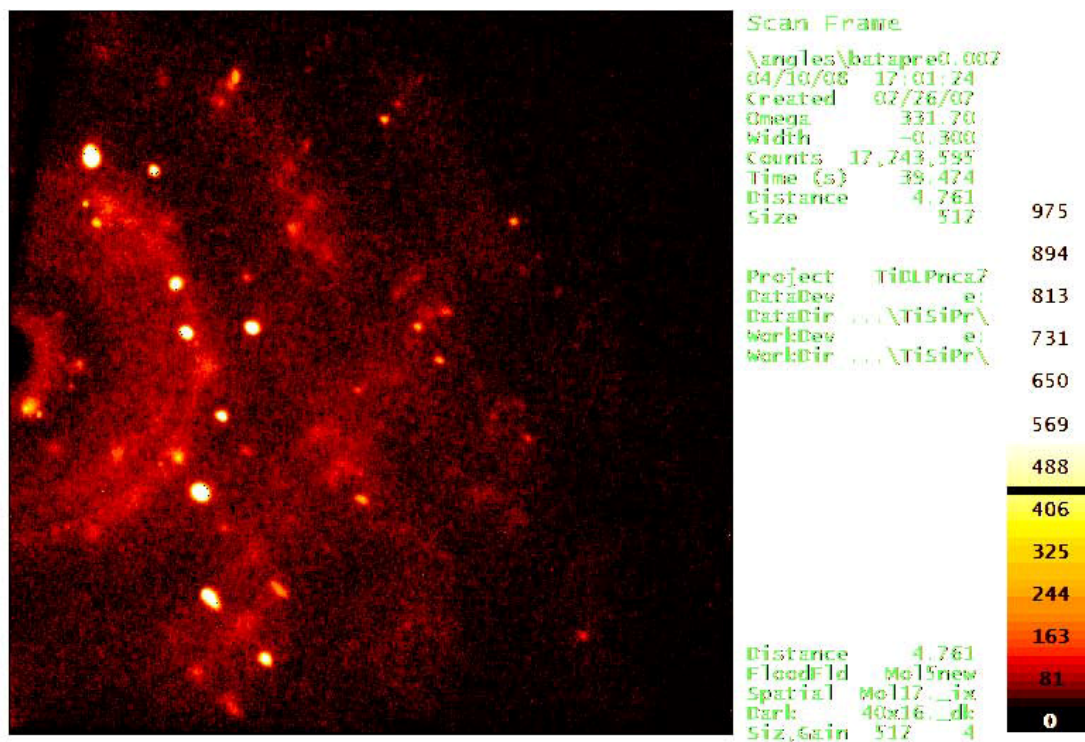
SLU - Kemi - 04/10/08

Fig. FS-7 Typical diffraction frame Compound 6



SLU - Kemi - 04/10/08

Fig. FS-8 Typical diffraction frame Compound 7



SLU - Kemi - 04/10/08

Fig. FS-9 Typical diffraction frame Compound 8