

Supporting Information

for

**The first stereochemically nonrigid monomeric
two-coordinate copper(I) complexes with homoleptic
and heteroleptic "N₂" donor set**

Chang-Chuan Chou,* Hsueh-Ju Liu , and Chan-Cheng Su

Contents

1. Figure S1. ¹H NMR spectra of complex **1** in toluene-*d*₈
2. Figure S2. ¹H NMR spectra of complex **1** in CD₂Cl₂
3. Figure S3. ¹H NMR spectra of complex **2** in CD₂Cl₂
4. Figure S4. ¹H NMR spectra of complex **3** in CD₂Cl₂

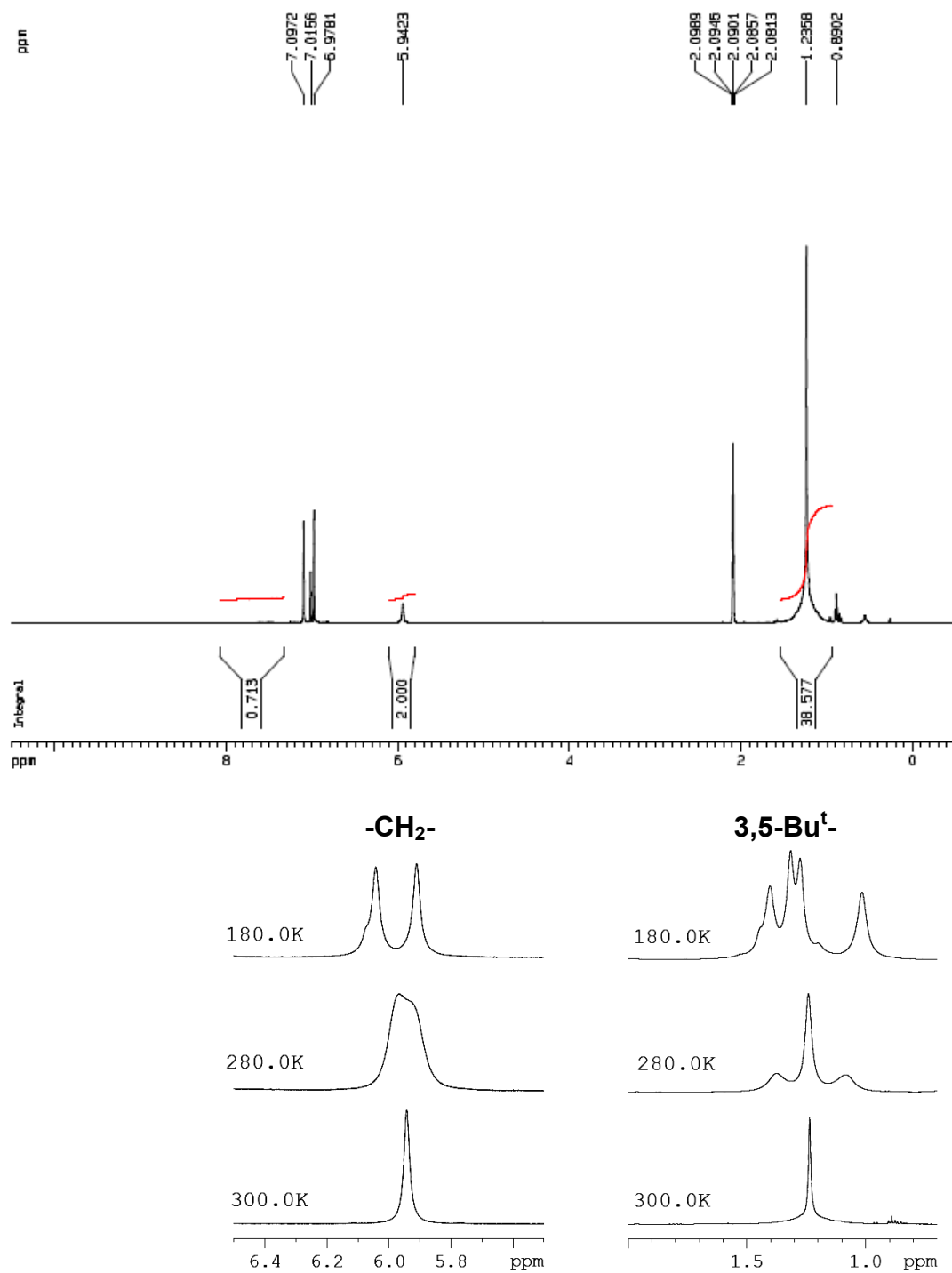


Figure S1. ^1H NMR spectra of complex 1 in toluene-d_8 .

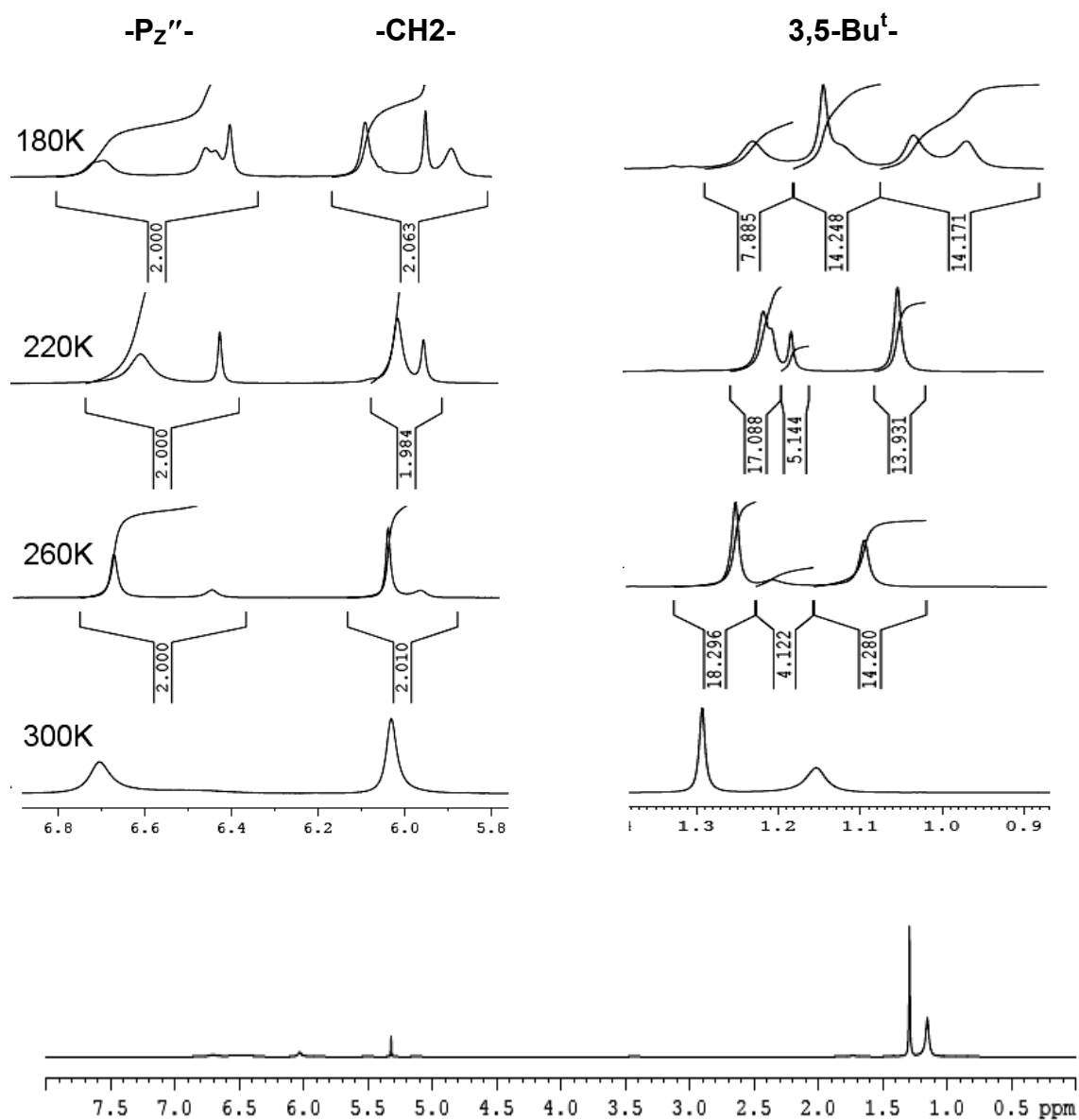


Figure S2. ^1H NMR spectra of complex 1 in CD_2Cl_2 .

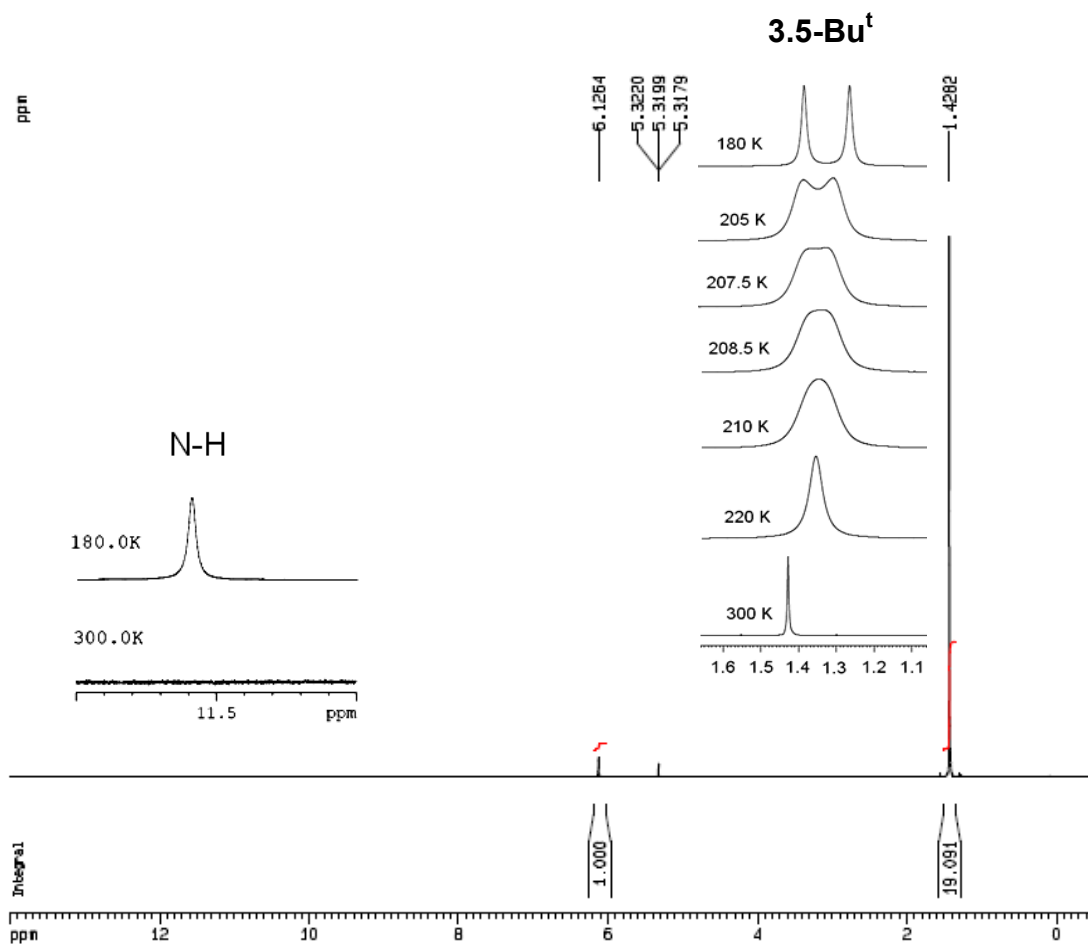


Figure S3. ^1H NMR spectra of complex **2** in CD_2Cl_2 .

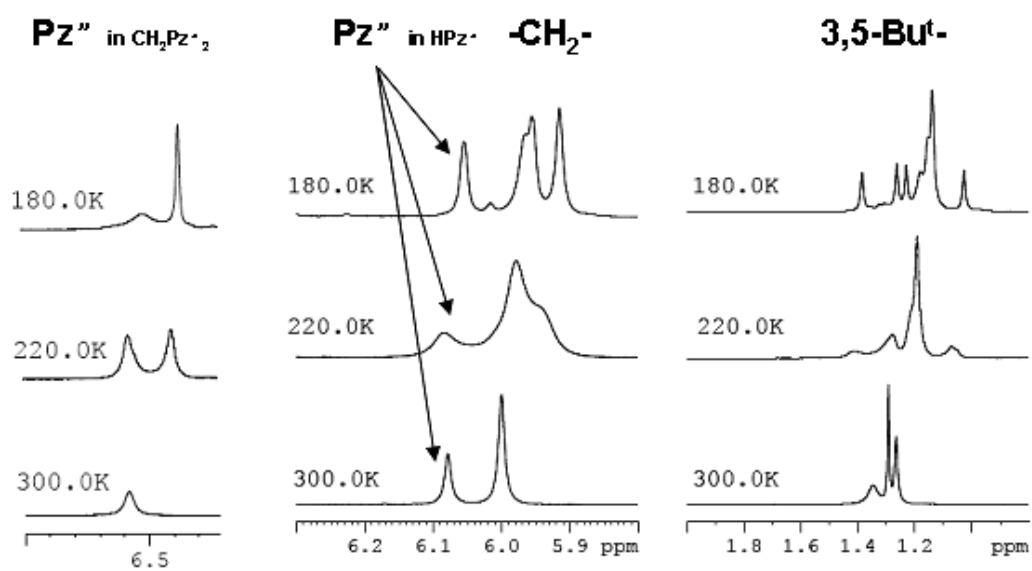
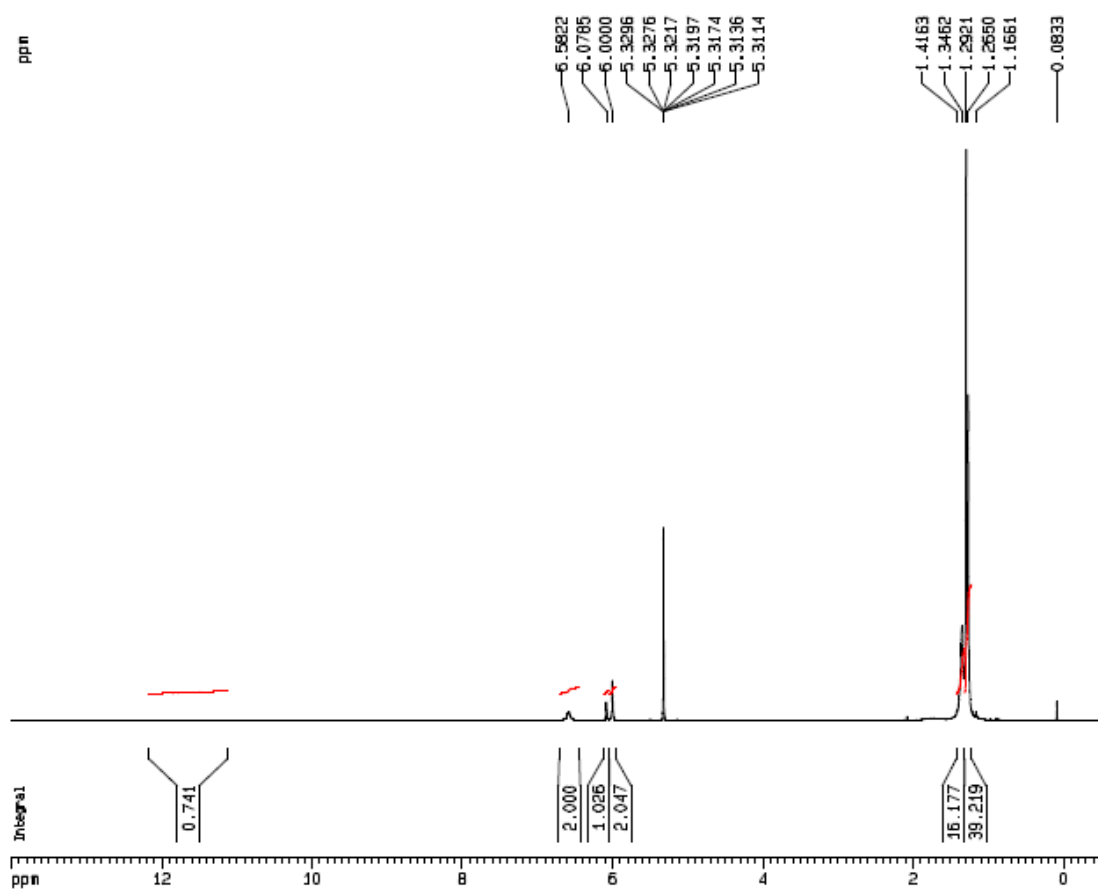


Figure S4. ^1H NMR spectra of complex 3 in CD_2Cl_2 .