

# Supplementary Material

*to*

## Rare-Earth Metal Hydroxylamide Complexes

*Ajay Venugopal,<sup>a,b</sup> Alexander Hepp,<sup>b</sup> Tania Pape,<sup>b</sup> Andreas Mix<sup>a</sup> and Norbert W. Mitzel\*<sup>a</sup>.*

*Fakultät für Chemie, Universität Bielefeld, Bielefeld, Germany,*

*Institut für Anorganische und Analytische Chemie, Universität Münster, Germany.*

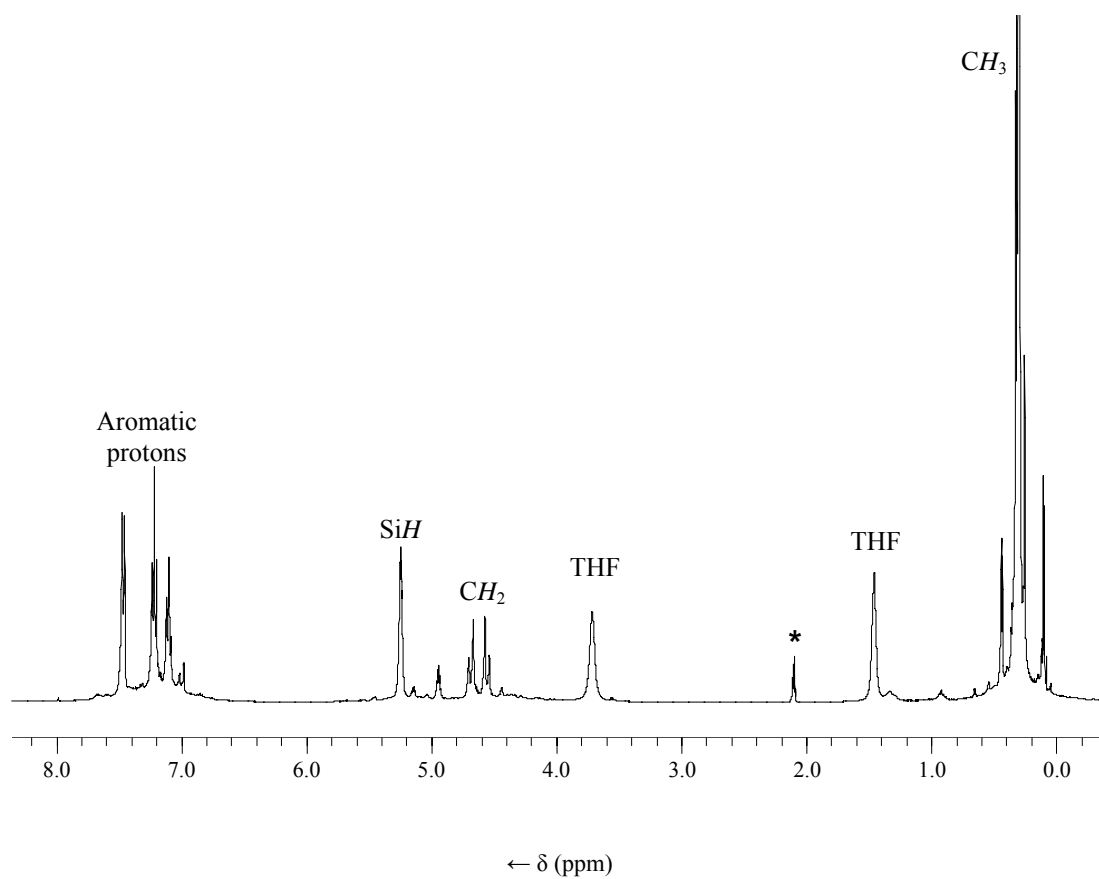


Figure 1:  $^1\text{H}$  NMR spectrum of compound **1** in toluene- $\text{d}_8$ . \* denotes the signal of the solvent.

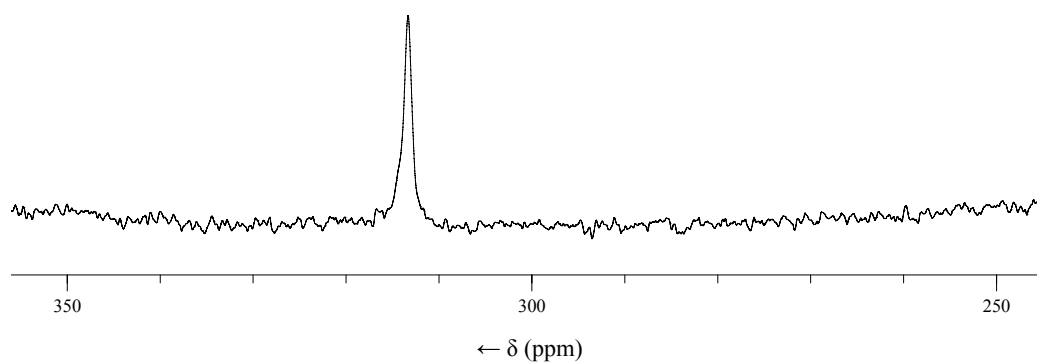


Figure 2:  $^{89}\text{Y}$  NMR spectrum of compound **1** in toluene- $\text{d}_8$

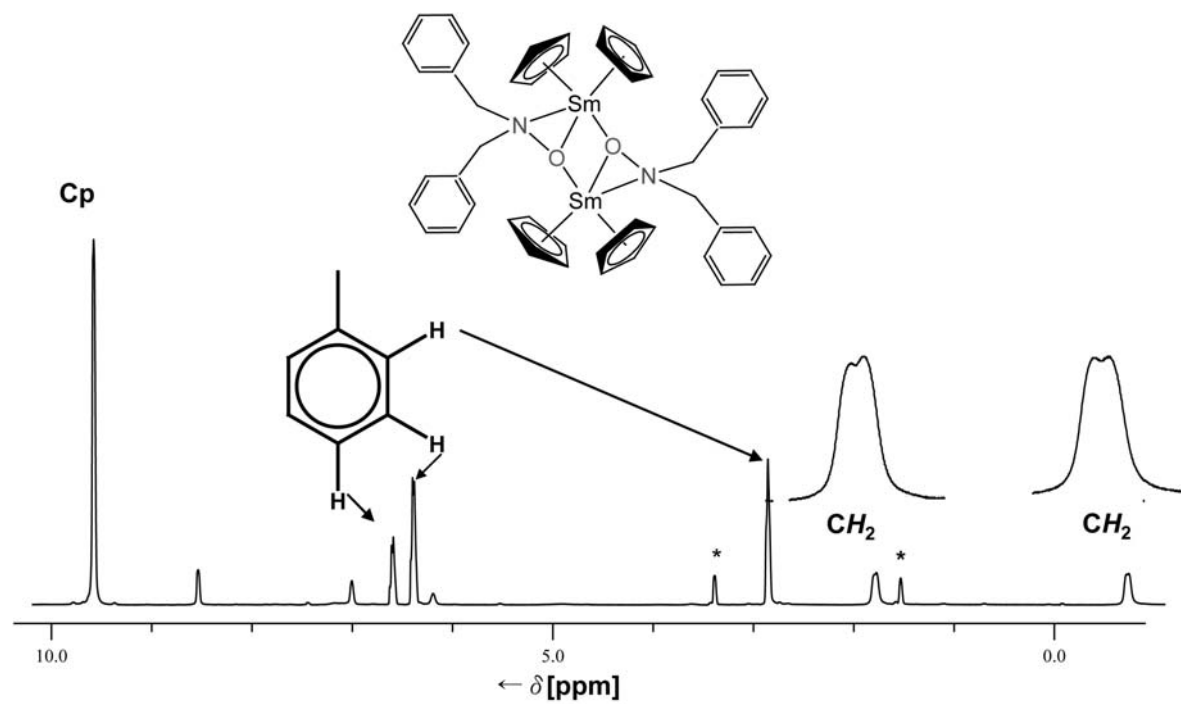


Figure 3: <sup>1</sup>H NMR spectrum of compound **2b** in THF-d<sub>8</sub>. \* denotes the signal of the solvent.