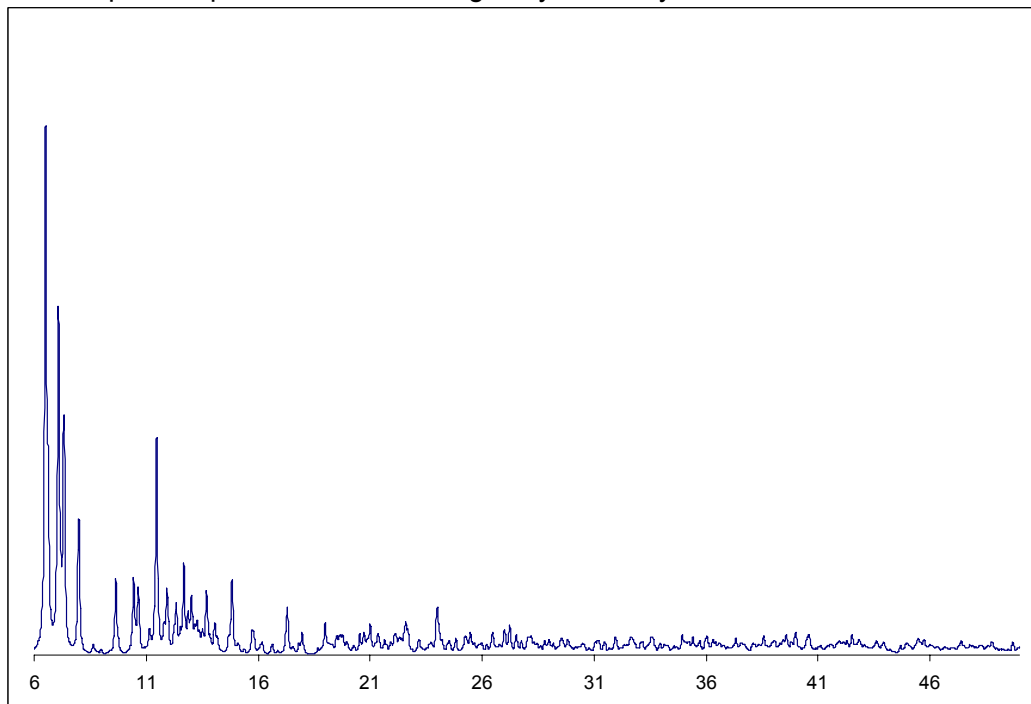


Supporting Information

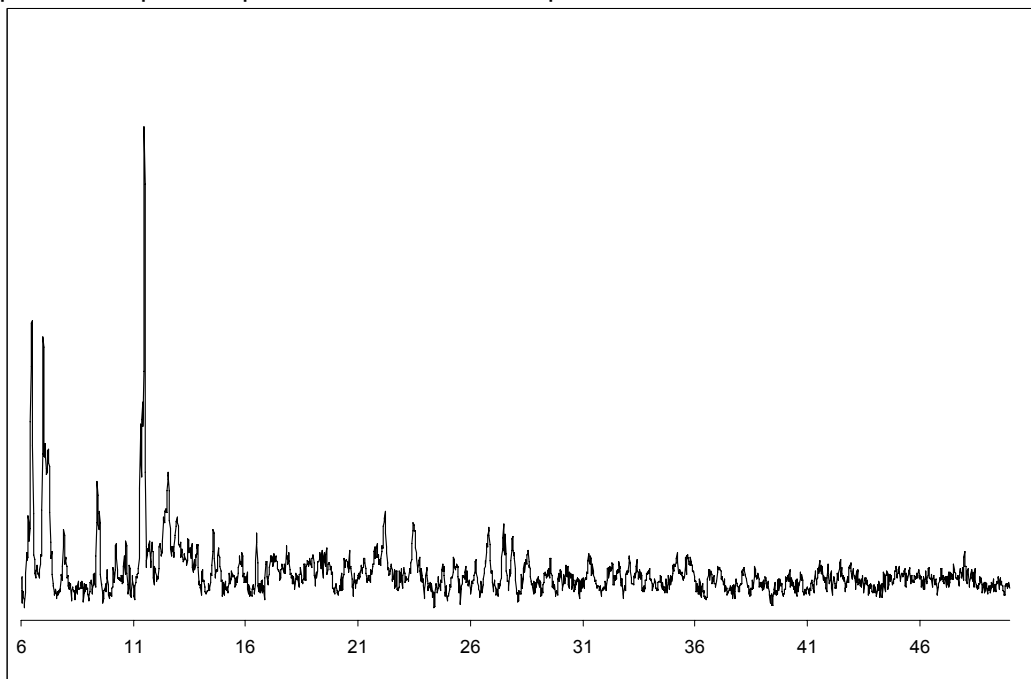
“ $[\text{Hg}_3(\text{Ge}_9)_4]^{10-}$: A nanometric molecular rod precursor to polymeric mercury-linked cluster chains.”

Jose M. Goicoechea

Calculated powder pattern based on single crystal X-ray diffraction data:



Experimental powder pattern from a solid sample of **1**:



Powder X-ray Diffraction. Powder XRD patterns were recorded at room temperature on a PANalytical X'Pert Pro diffractometer using $\text{Cu K}\alpha$ radiation at 40 kV and 40 mA. Samples were mounted on aluminium plates under Ar in air-tight vessels and scanned in the 2θ range 6–50°, with a step size of 0.02° and a step time of 1 s.