

Supporting Information

Synthesis, Characterization and Optical Property of Flowerlike Indium Tin Sulfide Nanostructure

Yongqian Lei,^{a,b} Yan Xing,^{a,b} Weiqiang Fan,^{a,b} Shuyan Song,^{a,b} Hongjie Zhang,^{*a}

^aState Key Laboratory of Rare Earth Resource Utilizations, Changchun Institute of Applied Chemistry, Chinese Academy of Sciences, Changchun, 130022, Jilin, China.

E-mail: hongjie@ciac.jl.cn; Fax: +86-431-85698041; Tel: +86-431-85262127

^bGraduate School of the Chinese Academy of Sciences, Beijing, 100039, P. R. China

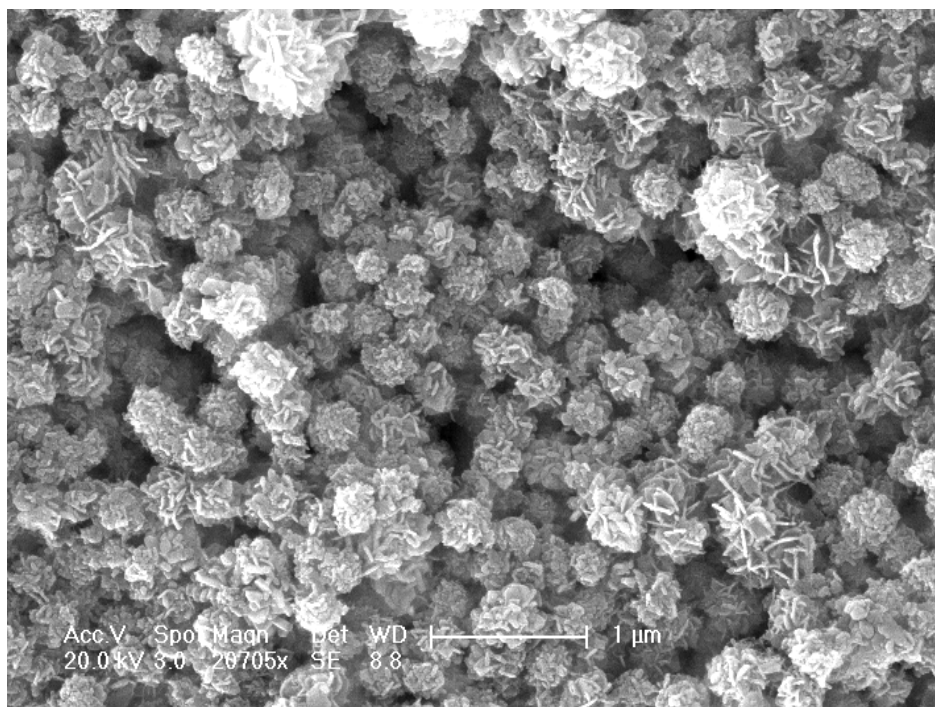


Figure S1 overall image of the flowerlike sample

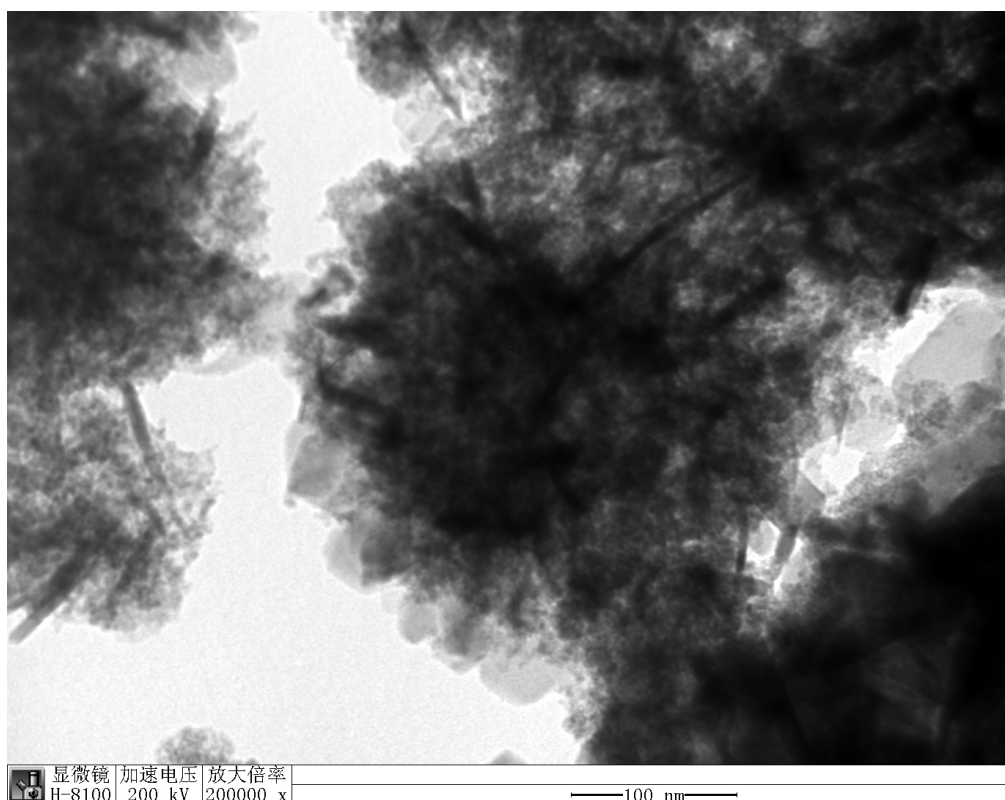


Figure S2 TEM image of the individual flowerlike nanostructure.

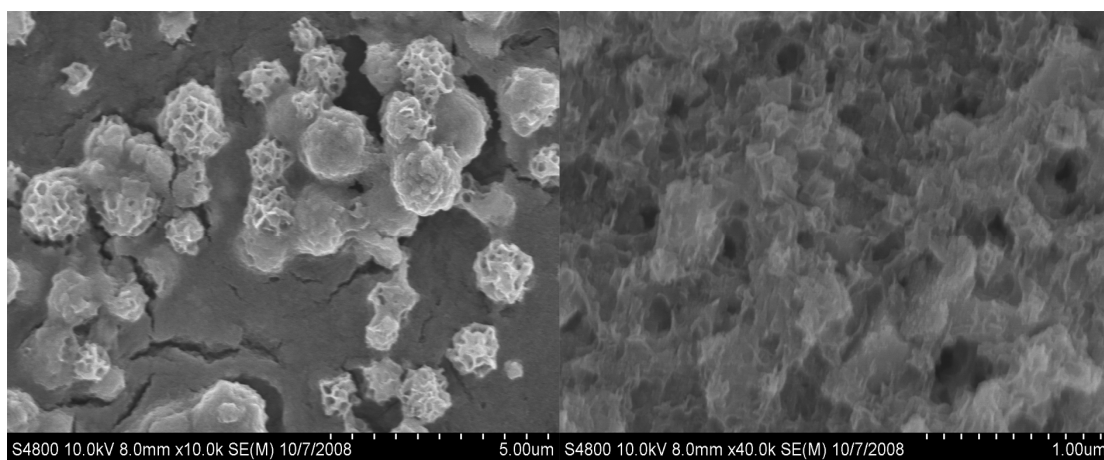


Figure S3 the prepared samples at different solution pH value: left pH=3.4; right pH=7.8

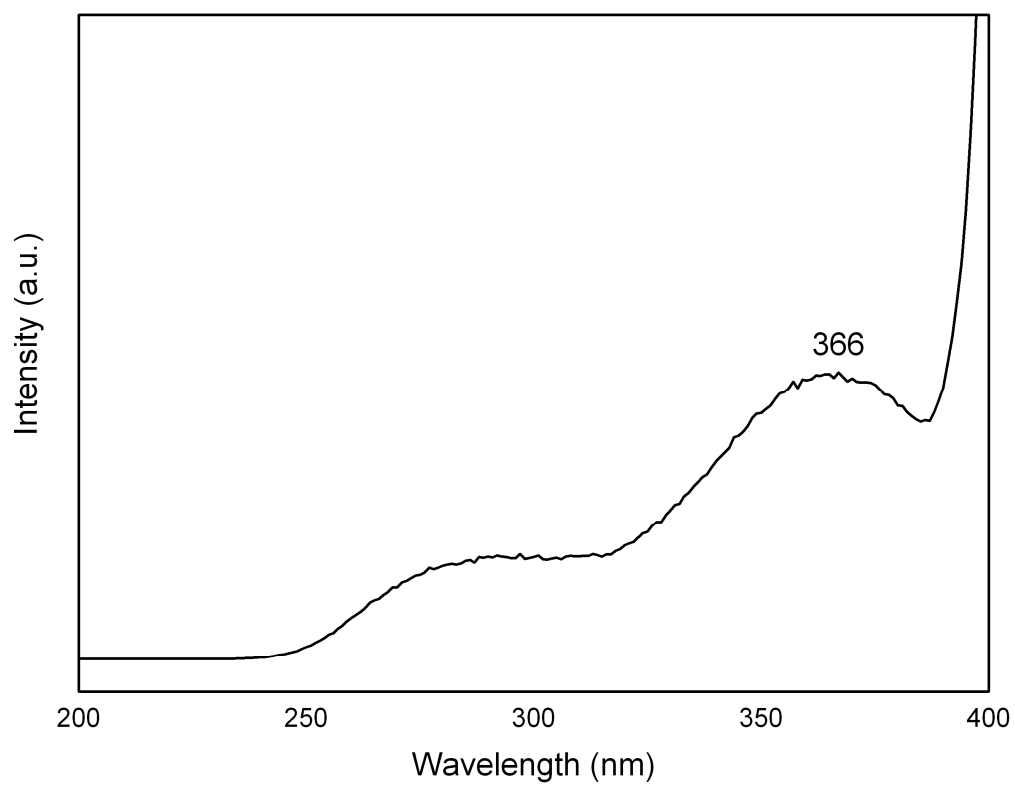


Figure S4 excitation spectrum of the sample