

## Electronic Supplementary Information

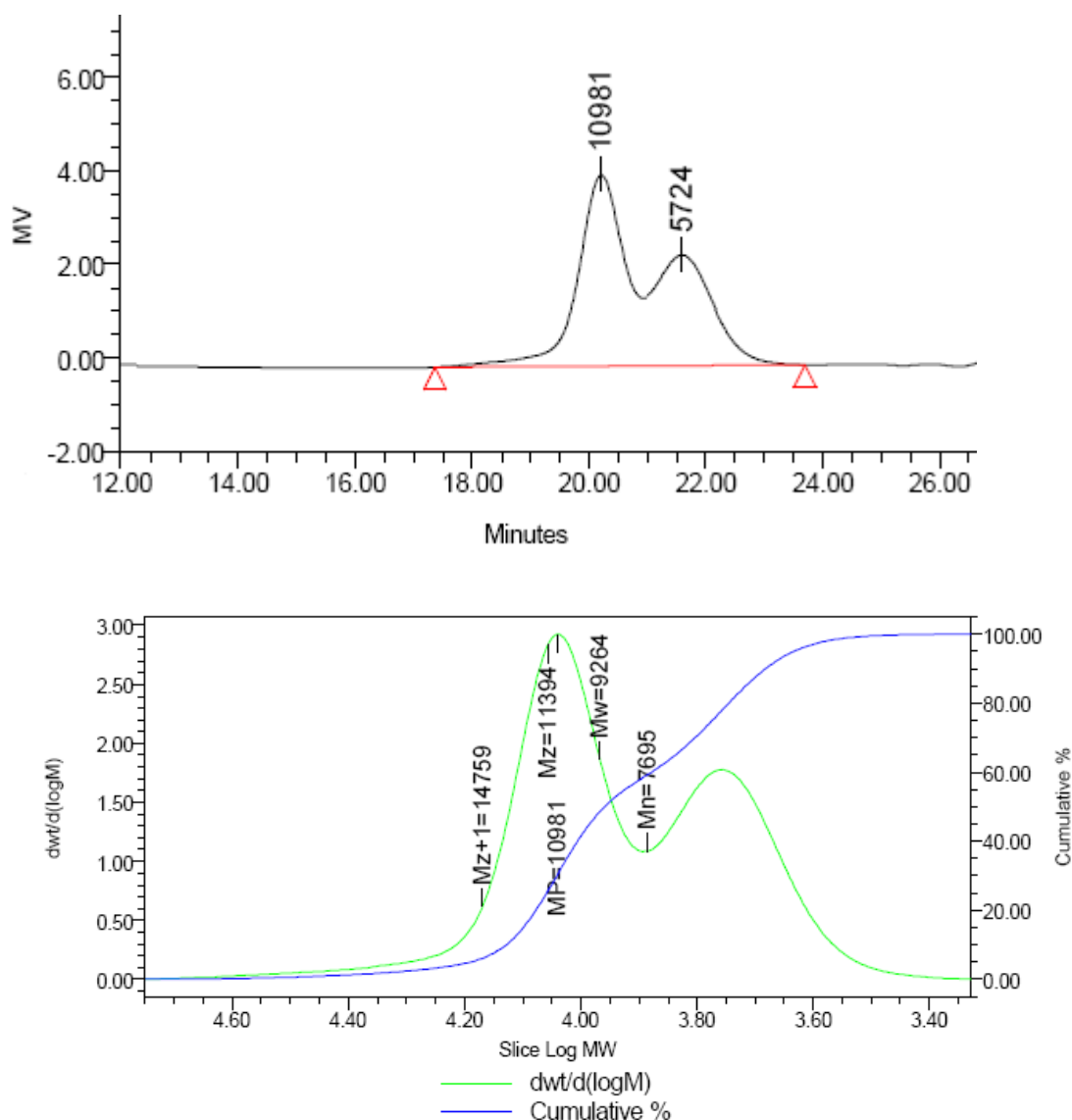
### Copolymerization of CO<sub>2</sub> and cyclohexene oxide using a lysine-based (salen)Cr<sup>III</sup>Cl catalyst

Liping Guo,<sup>a</sup> Congmin Wang,<sup>a</sup> Wenjia Zhao,<sup>a</sup> Haoran Li,<sup>\*a</sup> Weilin Sun<sup>b</sup> and Zhiquan Shen<sup>b</sup>

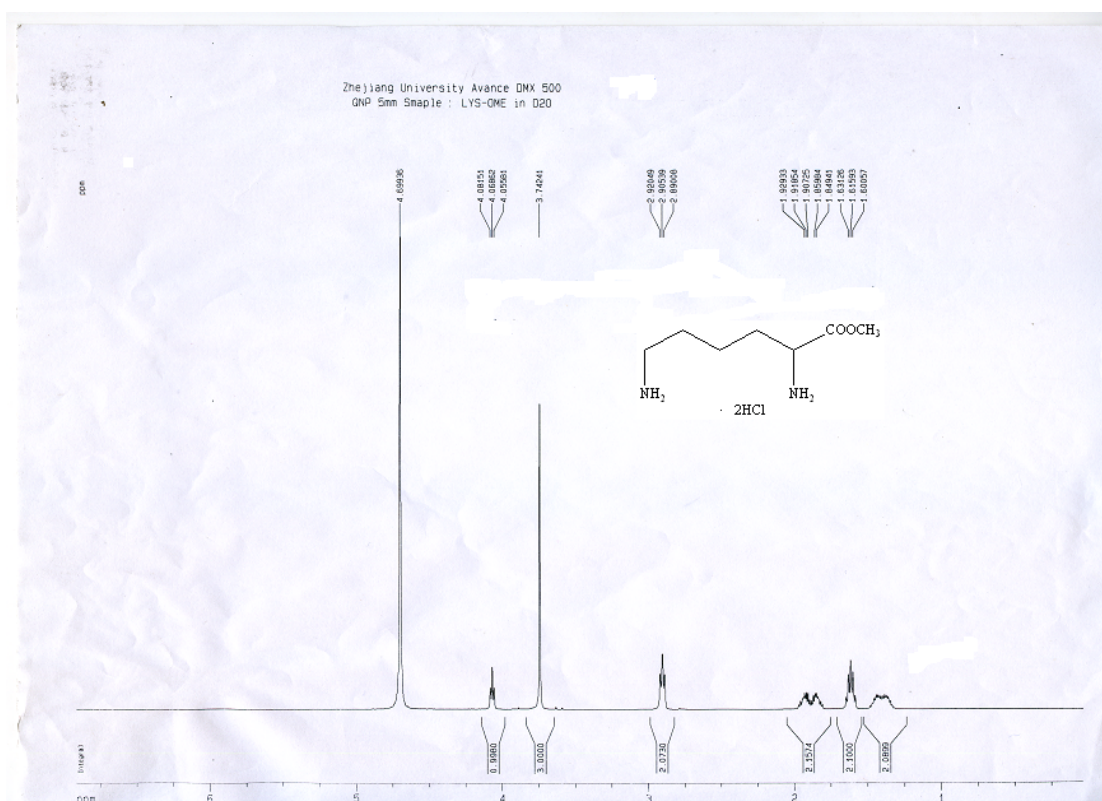
<sup>a</sup> Department of Chemistry, Zhejiang University, Hangzhou 310027, People's Republic of China  
Fax: (86)-571-8795-1895 ; Tel : (86)-571-8795-2424 ; Email: [lihr@zju.edu.cn](mailto:lihr@zju.edu.cn)

<sup>b</sup> Department of Polymer Science and Engineering, Zhejiang University, Hangzhou 310027, People's Republic of China

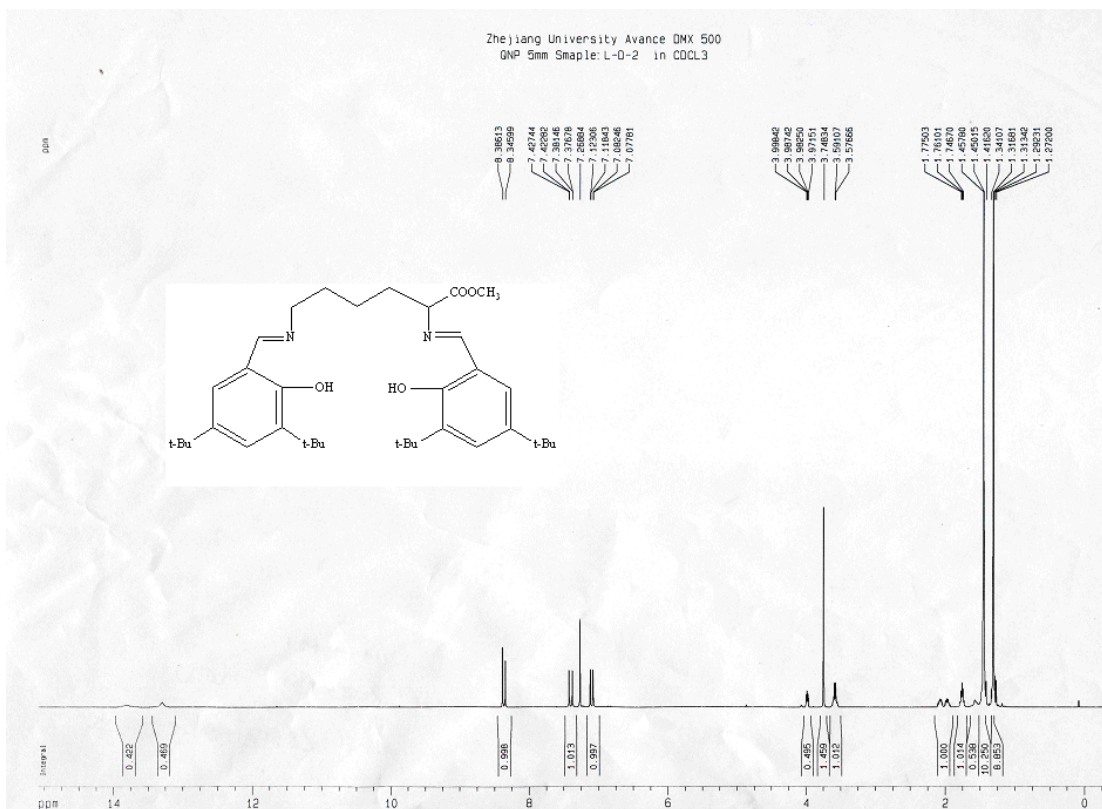
<A typical GPC chromatogram of the copolymer (for the reaction condition, see Table 1, entry 7)>



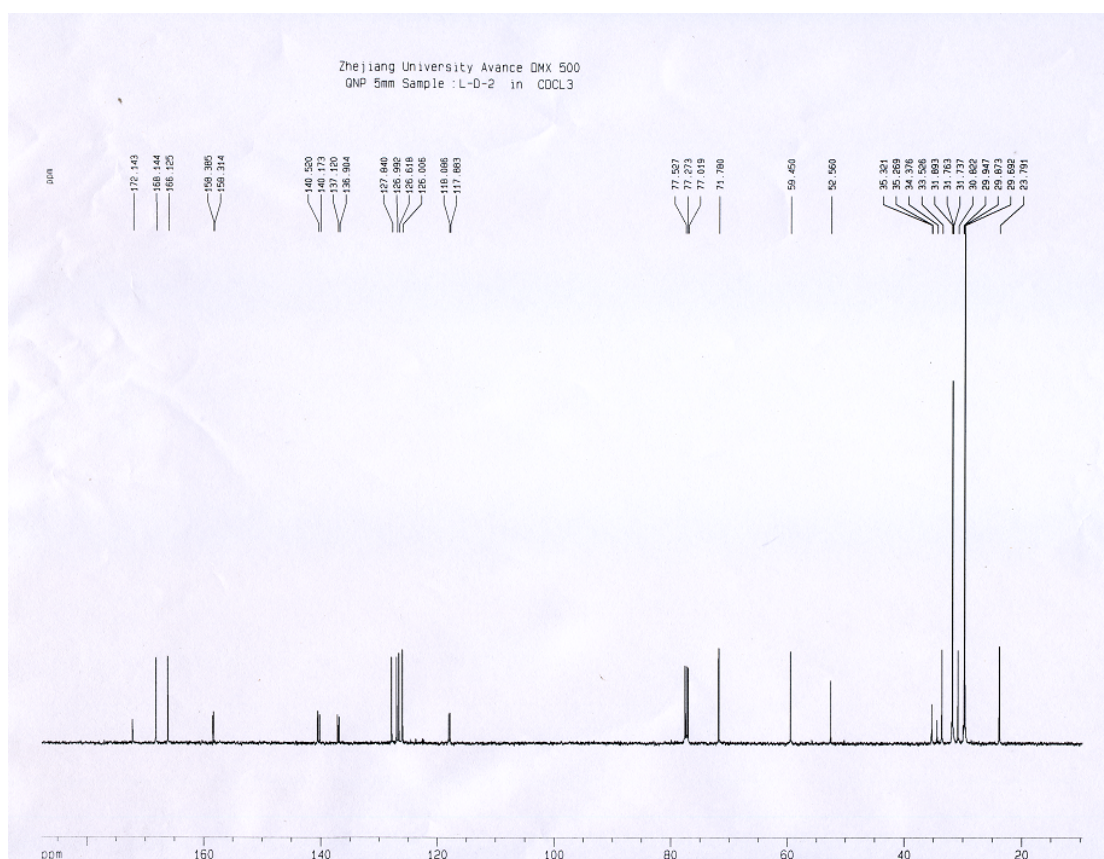
<<sup>1</sup>H NMR spectrum of (S)-lysine methyl ester dihydrochloride 2>



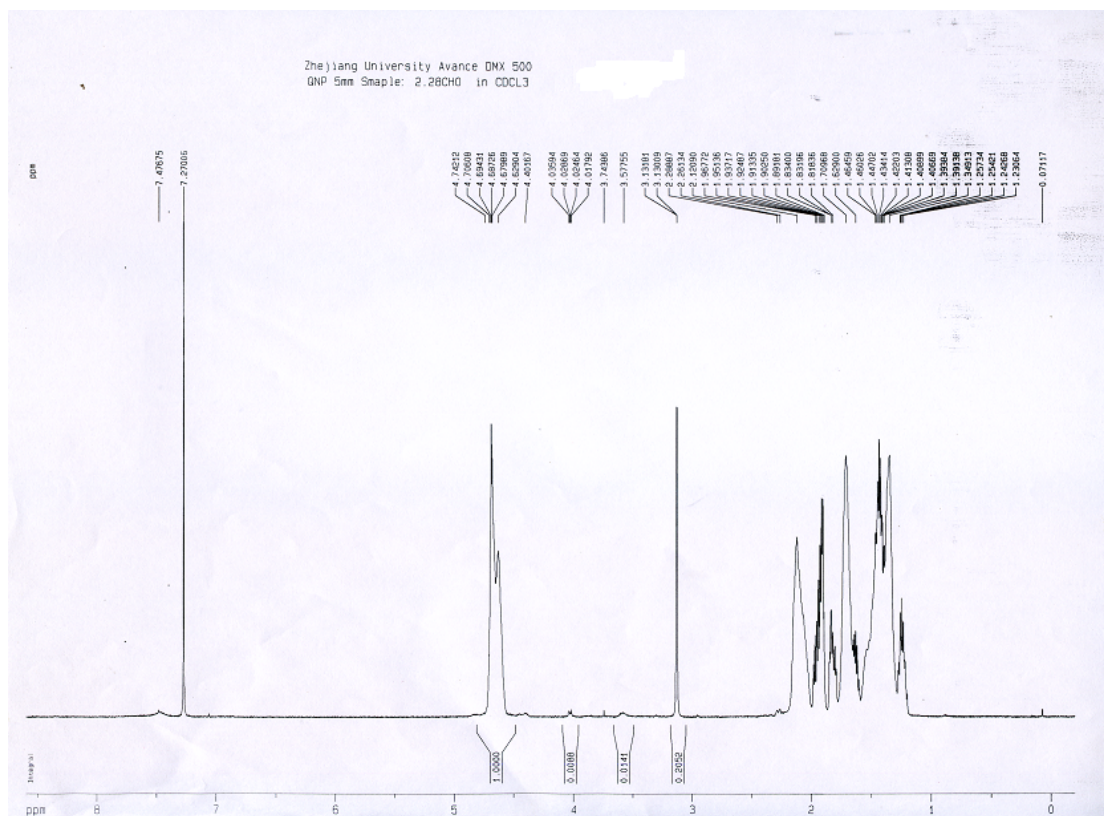
<<sup>1</sup>H NMR spectrum of Lysine-based H<sub>2</sub>salen ligand 3>



< $^{13}\text{C}$  NMR spectrum of Lysine-based  $\text{H}_2\text{salen}$  ligand **3**>



<A typical  $^1\text{H}$  NMR spectrum of the crude product (for the reaction condition, see Table 1, entry 3)>





<A typical  $^{13}\text{C}$  NMR spectrum of the crude product (for the reaction condition, see Table 1, entry 11)>

