

Supporting Information for

Imidazole-based phosphane gold(I) complexes as potential agents for cancer treatment: Synthesis, structural studies and antitumor activity

Peter C. Kunz,* Matthias U. Kassack, Alexandra Hamacher and Bernhard Spingler

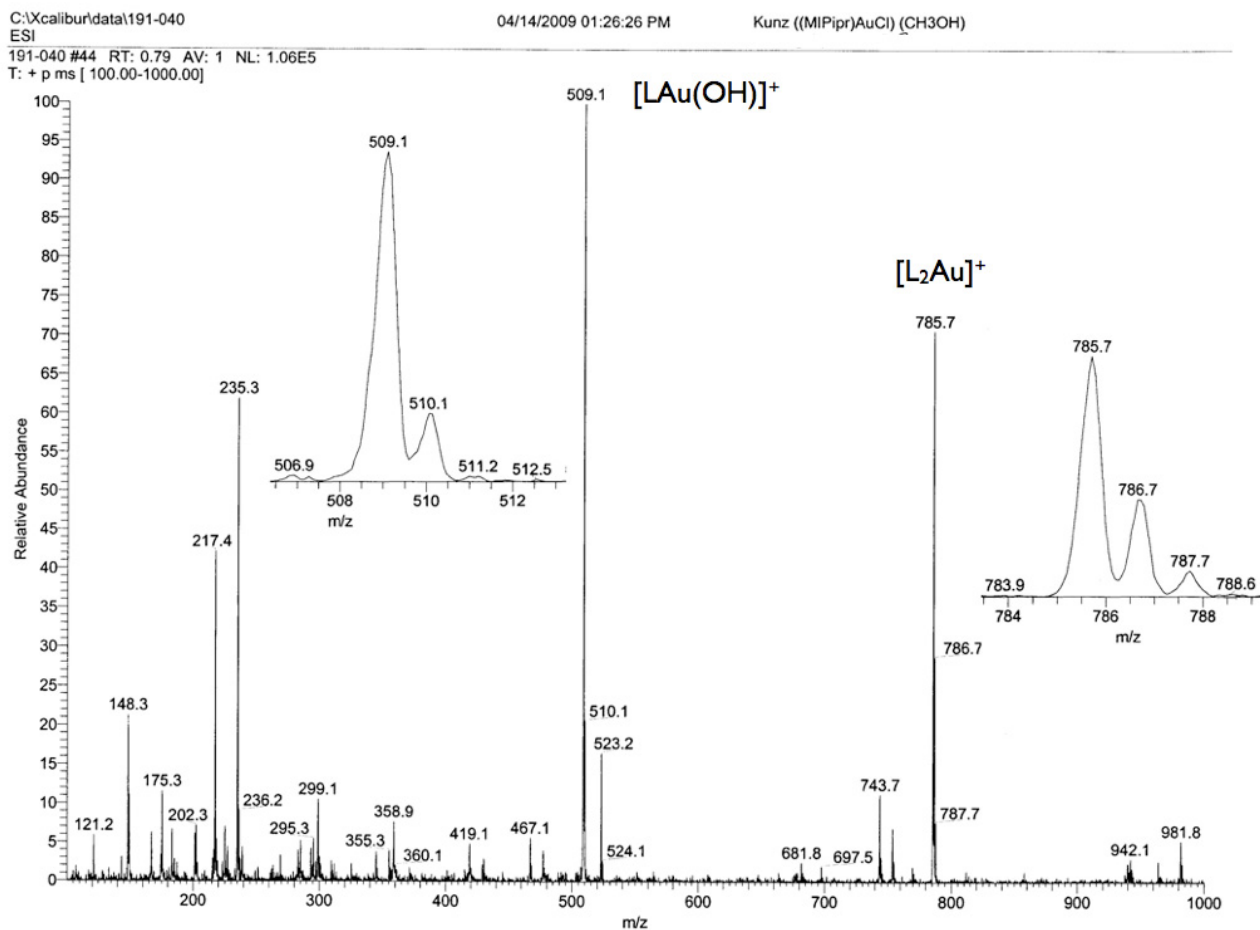


Fig. S11 ESI mass spectrum of **4** in methanol.

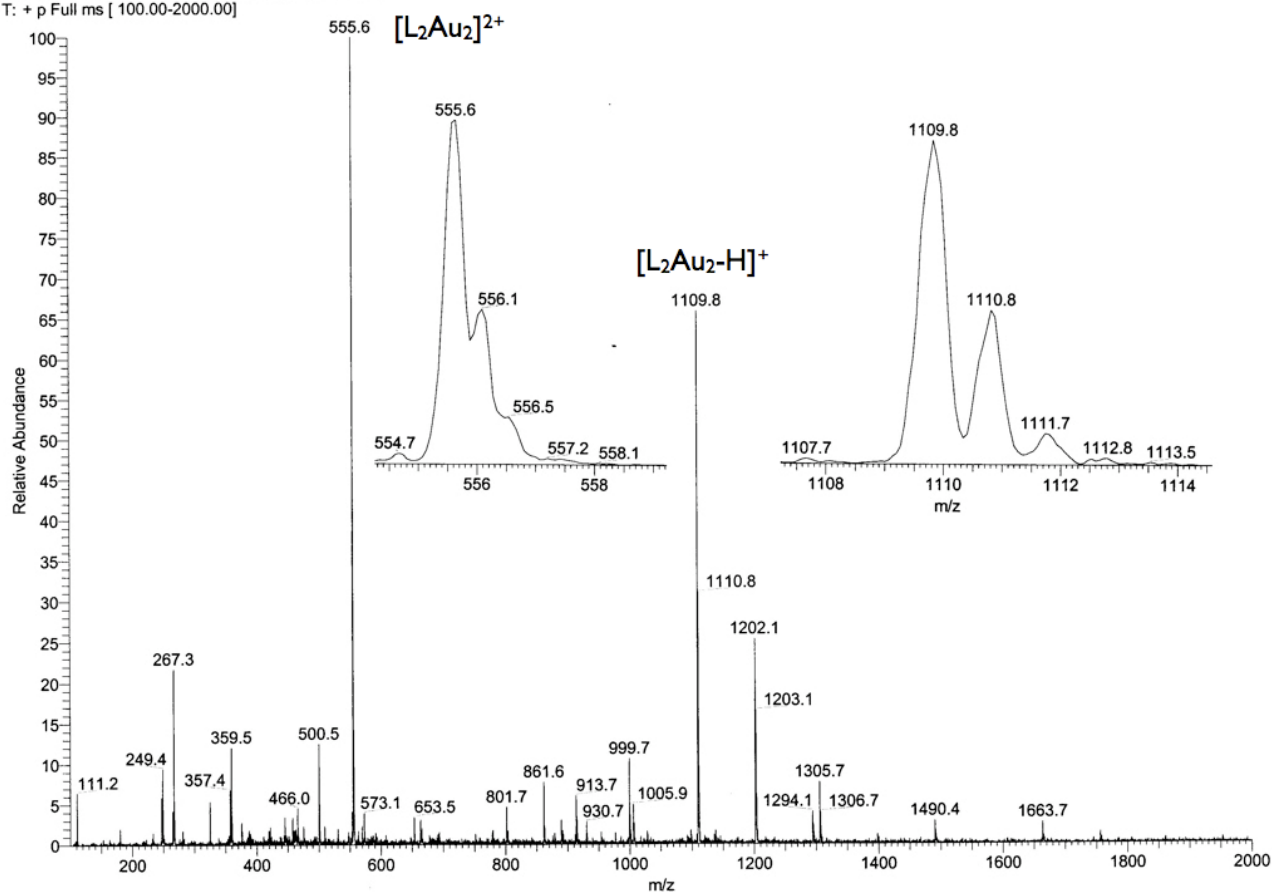


Fig. S12 ESI mass spectrum of 5 in methanol.

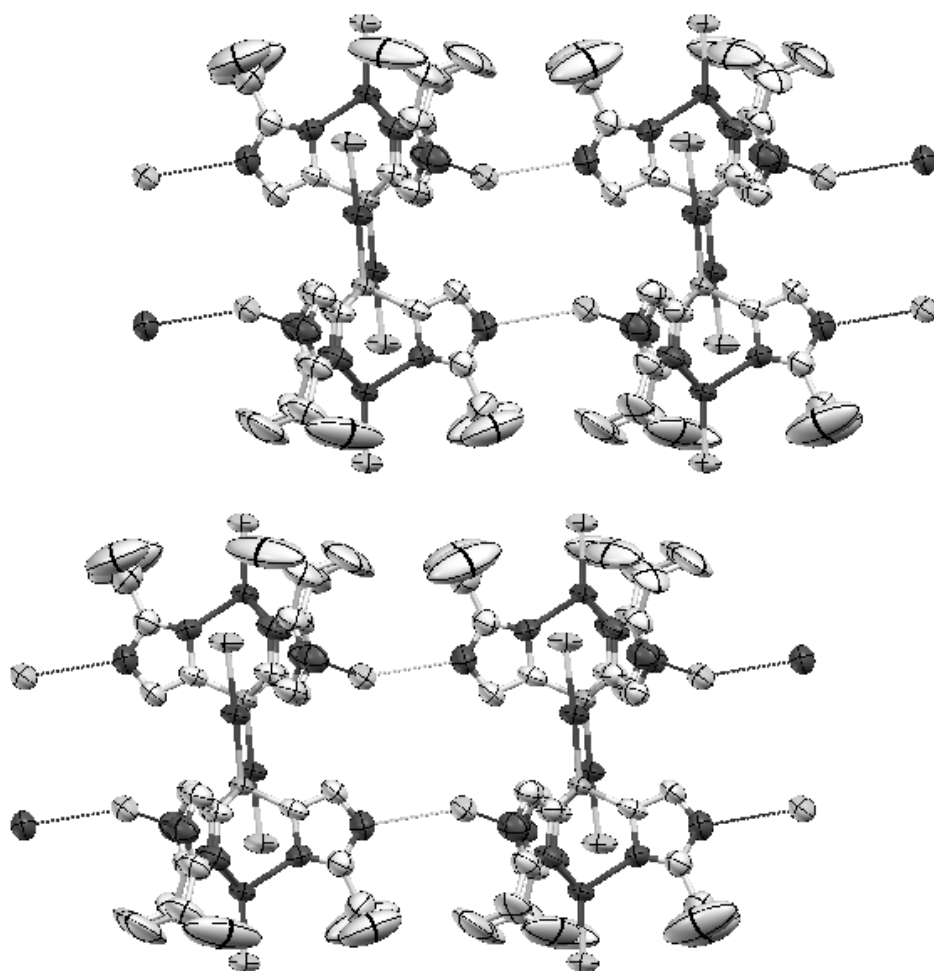


Fig. SI3 Packing in the solid-state structure of **6**. View along the crystallographic *b*-axis. The displacement ellipsoids are drawn at a 50 % level, H-atoms are omitted for clarity.

Table SI1 Relative potency of compounds **1** - **5** compared to cisplatin. Ratios of IC_{50} (cisplatin) and IC_{50} (test compound) were calculated for each cell line, respectively. Missing data result from no effects up to 10 μ M.

	Cisplatin	1	2	3	4	5
A2780	1	1.50	0.29	0.12	0.68	0.14
A2780cis	1	8.32	1.31	-	1.98	0.92
SKOV-3	1	3.48	-	-	-	-
HEY	1	4.20	0.69	0.30	0.89	0.33
OVCAR-3	1	3.41	0.84	-	0.86	-
OVCAR-8	1	2.85	0.85	0.91	0.75	0.59
BG-1	1	3.24	0.61	0.38	1.23	0.41
HL60	1	0.37	0.14	0.09	3.16	0.09
K562	1	5.08	1.61	1.18	1.49	0.83