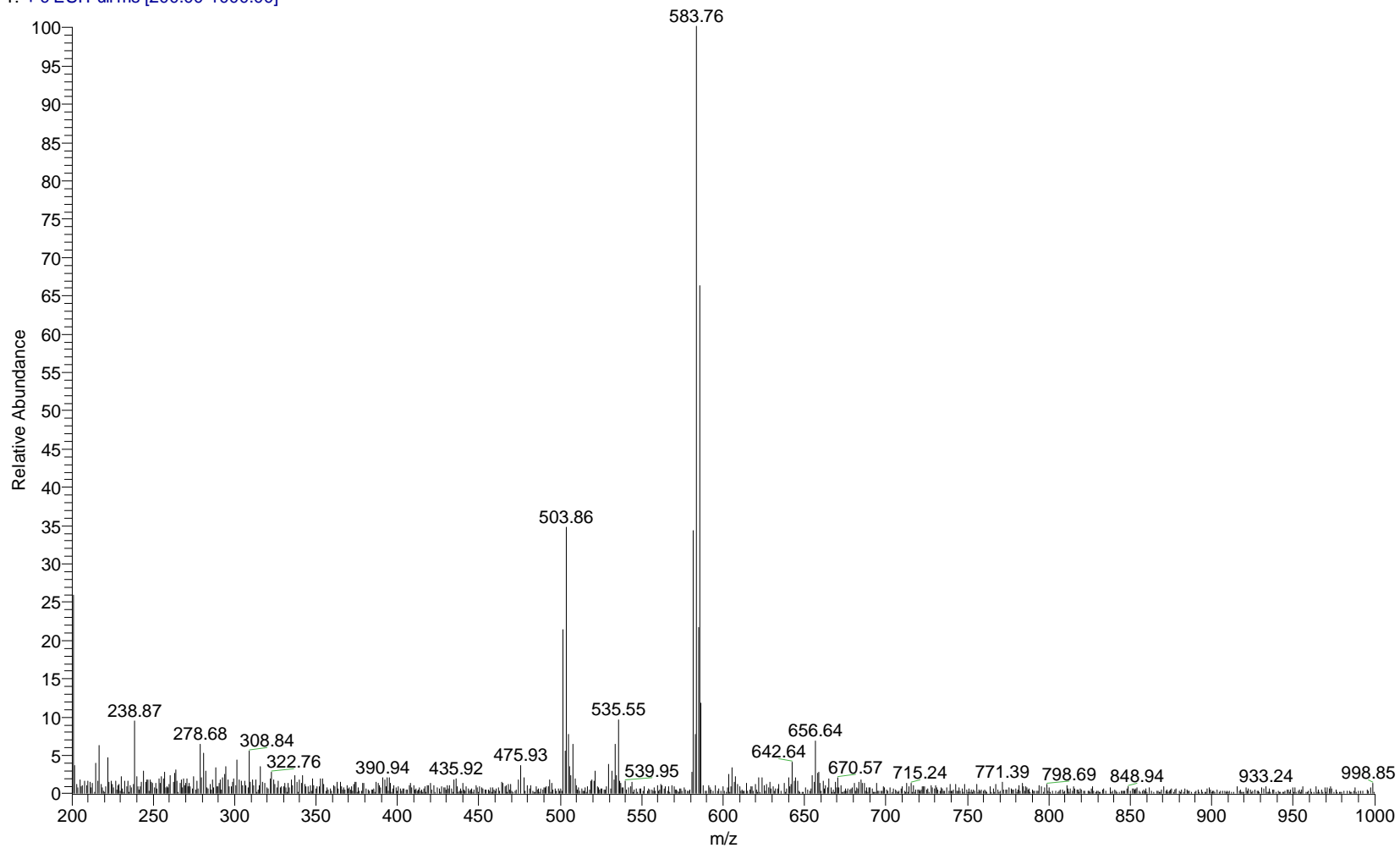


E:\Student\Geqch\ReBr(CO)3(terpy)  
CH<sub>2</sub>Cl<sub>2</sub>, 150C

6/22/2007 3:43:41 PM

ReBr(CO)3(terpy)

ReBr(CO)3(terpy) #55-62 RT: 0.89-1.00 AV: 8 NL: 1.87E7  
T: +c ESI Full ms [200.00-1000.00]

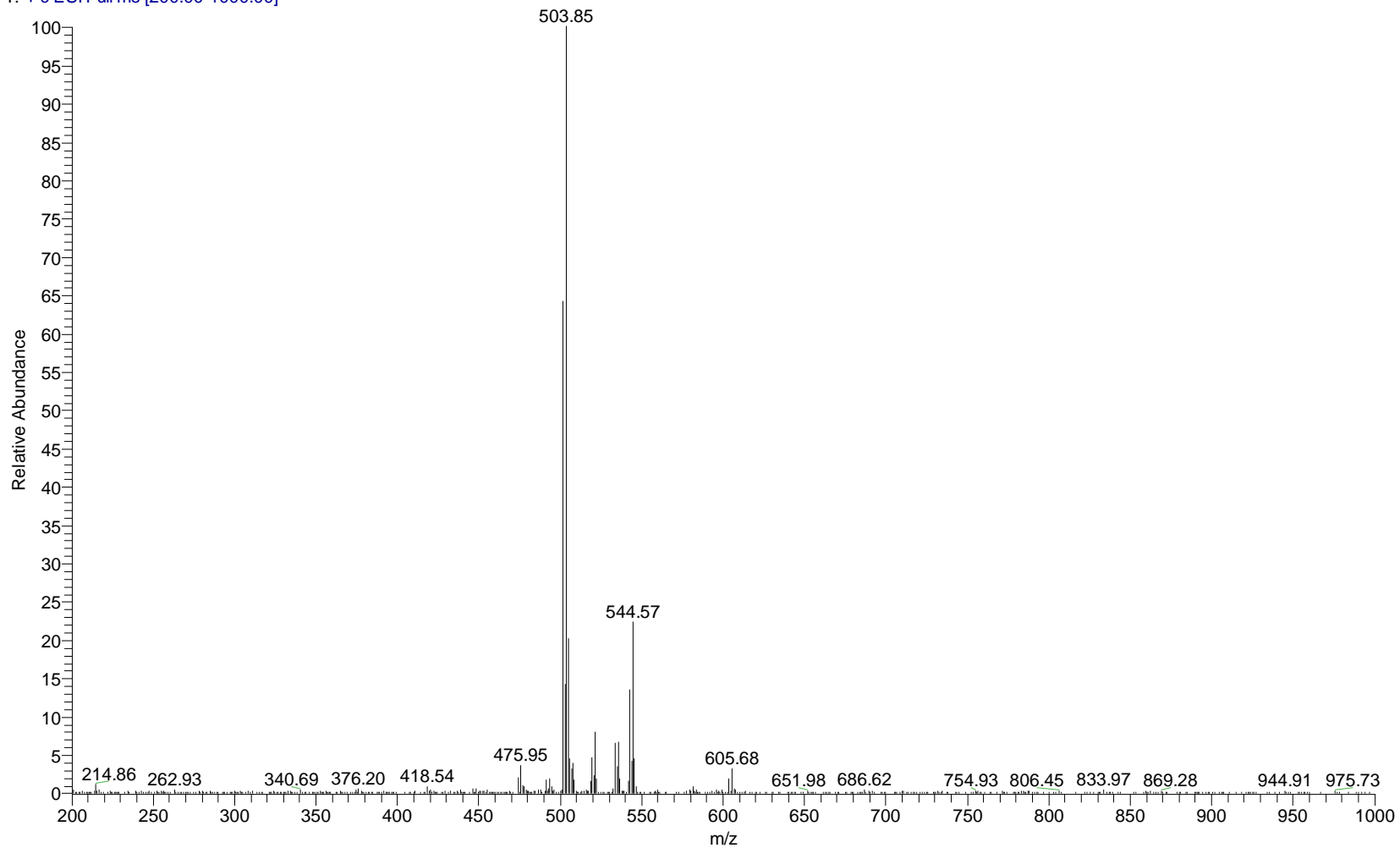


E:\Student\Geqch\Re(CH3CN)(CO)3(terpy)  
CH2Cl2, 150C

6/22/2007 3:48:50 PM

Re(CH3CN)(CO)3(terpy)

Re(CH3CN)(CO)3(terpy) #6-8 RT: 0.09-0.12 AV: 3 NL: 4.56E8  
T: +c ESI Full ms [200.00-1000.00]

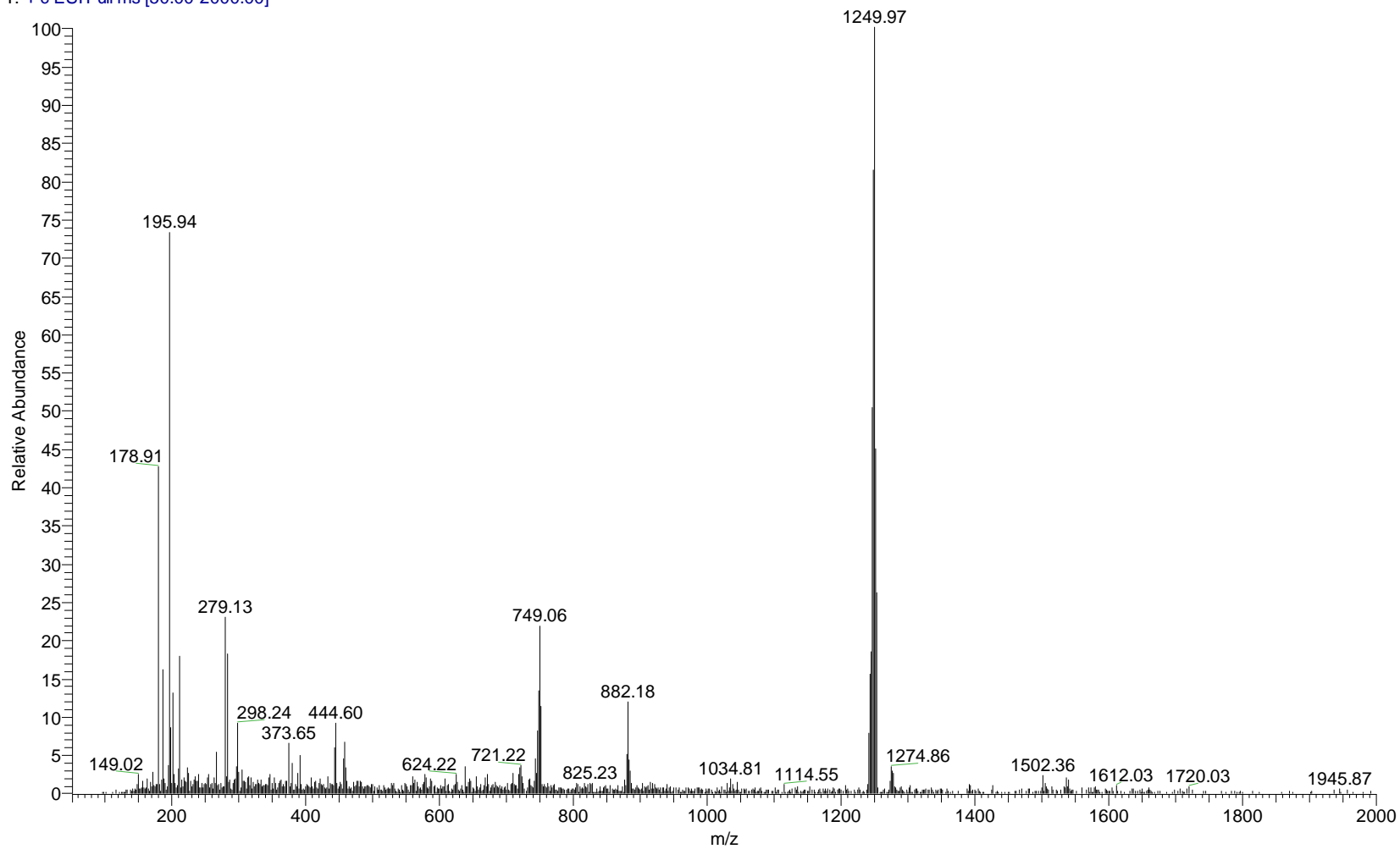


E:\Student\Geqch\Ru-dppf-Re-bpy  
CH<sub>2</sub>Cl<sub>2</sub>, 150C

6/20/2007 10:25:51 AM

Ru-dppf-Re-bpy

Ru-dppf-Re-bpy #17-20 RT: 0.44-0.52 AV: 4 NL: 2.13E7  
T: + c ESI Full ms [50.00-2000.00]

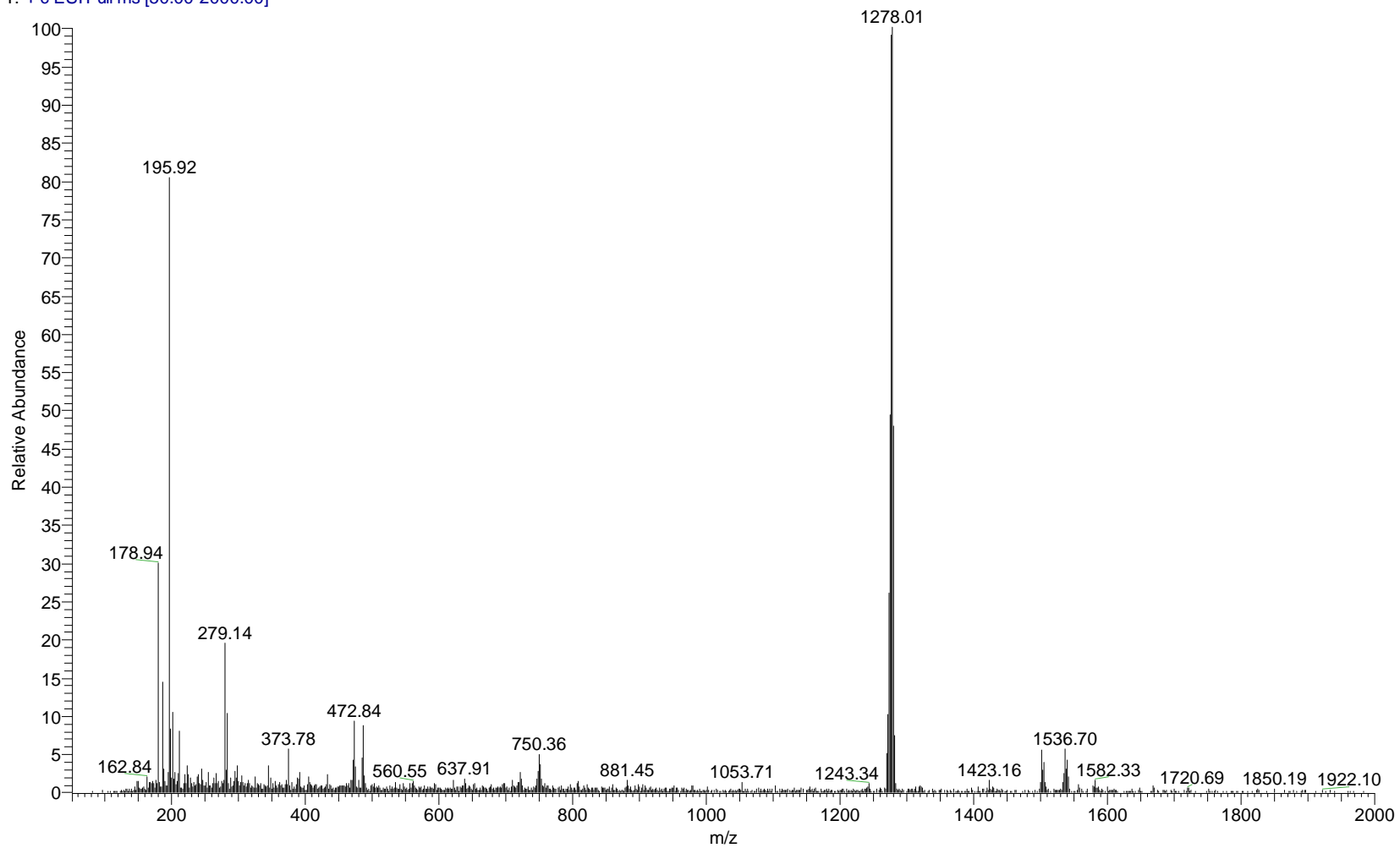


E:\Student\Gegch\Ru-dppf-Re-Me2bpy  
CH2Cl2, 150C

6/20/2007 10:17:49 AM

Ru-dppf-Re-Me2bpy

Ru-dppf-Re-Me2bpy #47-51 RT: 1.24-1.35 AV: 5 NL: 2.74E7  
T: + c ESI Full ms [50.00-2000.00]

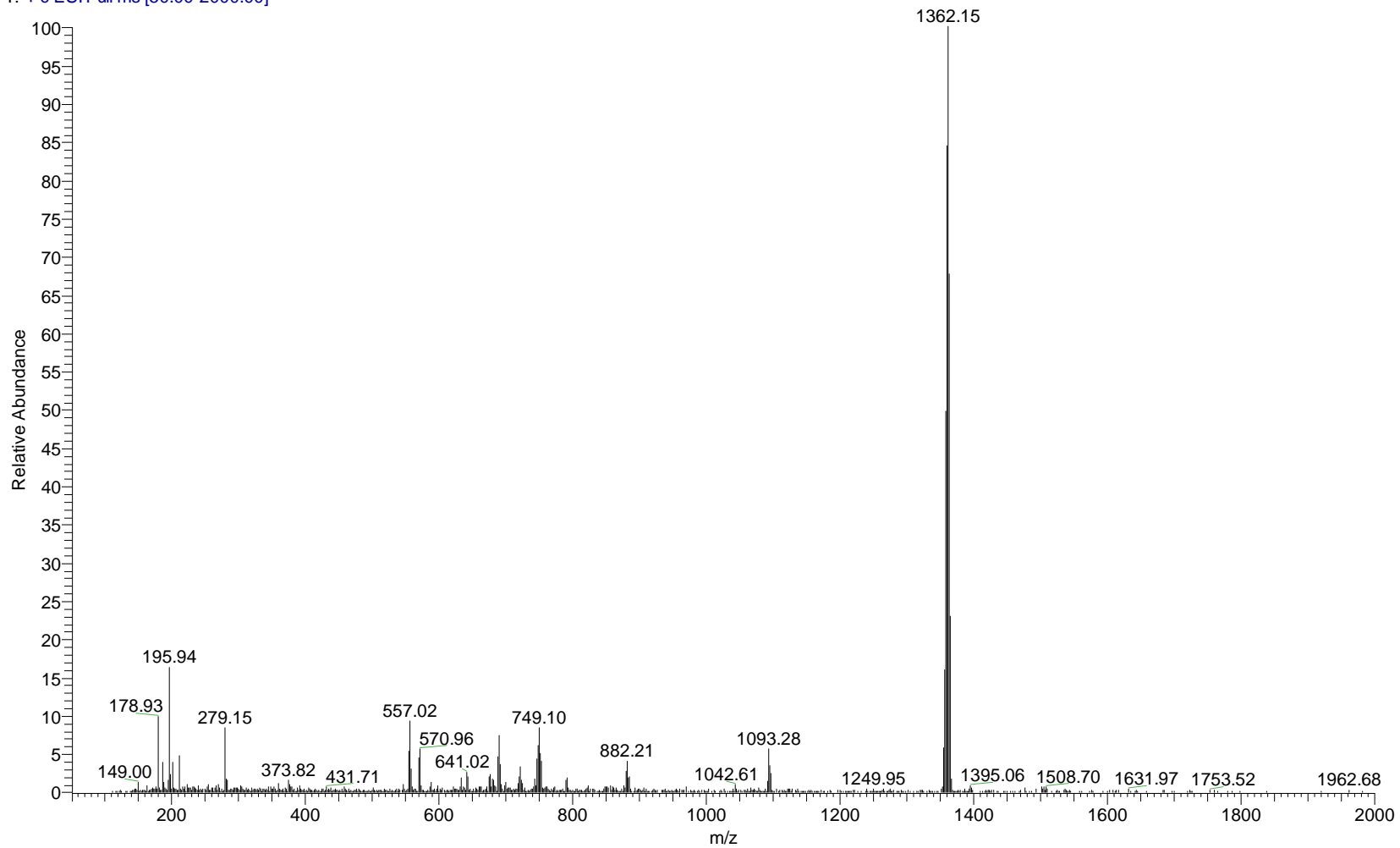


E:\Student\Geqch\Ru-dppf-Re-Bu2bpy  
CH2Cl2, 150C

6/20/2007 10:31:56 AM

Ru-dppf-Re-Bu2bpy

Ru-dppf-Re-Bu2bpy #15-17 RT: 0.39-0.44 AV: 3 NL: 6.44E7  
T: + c ESI Full ms [50.00-2000.00]

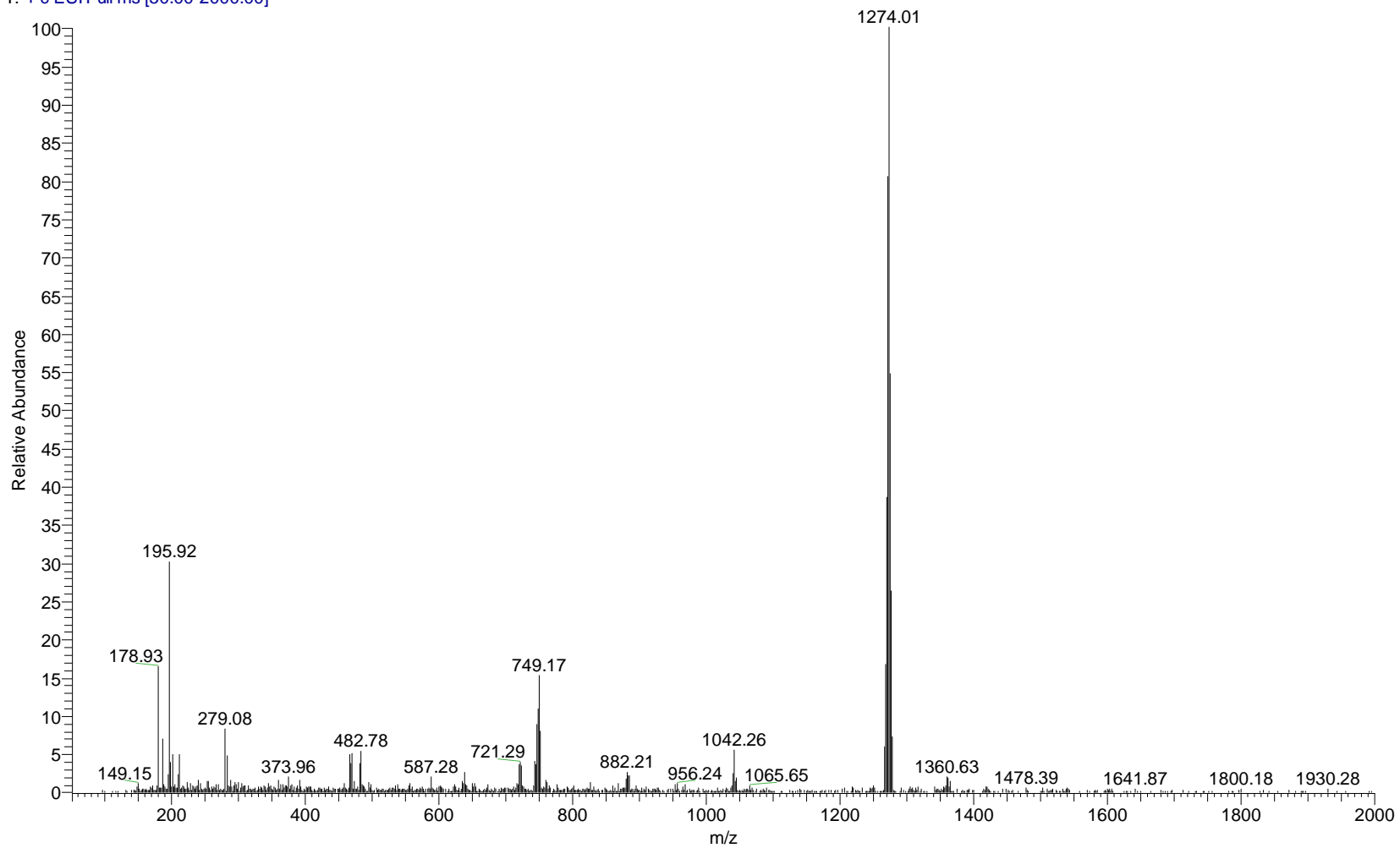


E:\Student\Geqch\Ru-dppf-Re-Phen  
CH<sub>2</sub>Cl<sub>2</sub>, 150C

6/20/2007 10:37:22 AM

Ru-dppf-Re-Phen

Ru-dppf-Re-Phen #14-16 RT: 0.36-0.41 AV: 3 NL: 4.26E7  
T: + c ESI Full ms [50.00-2000.00]

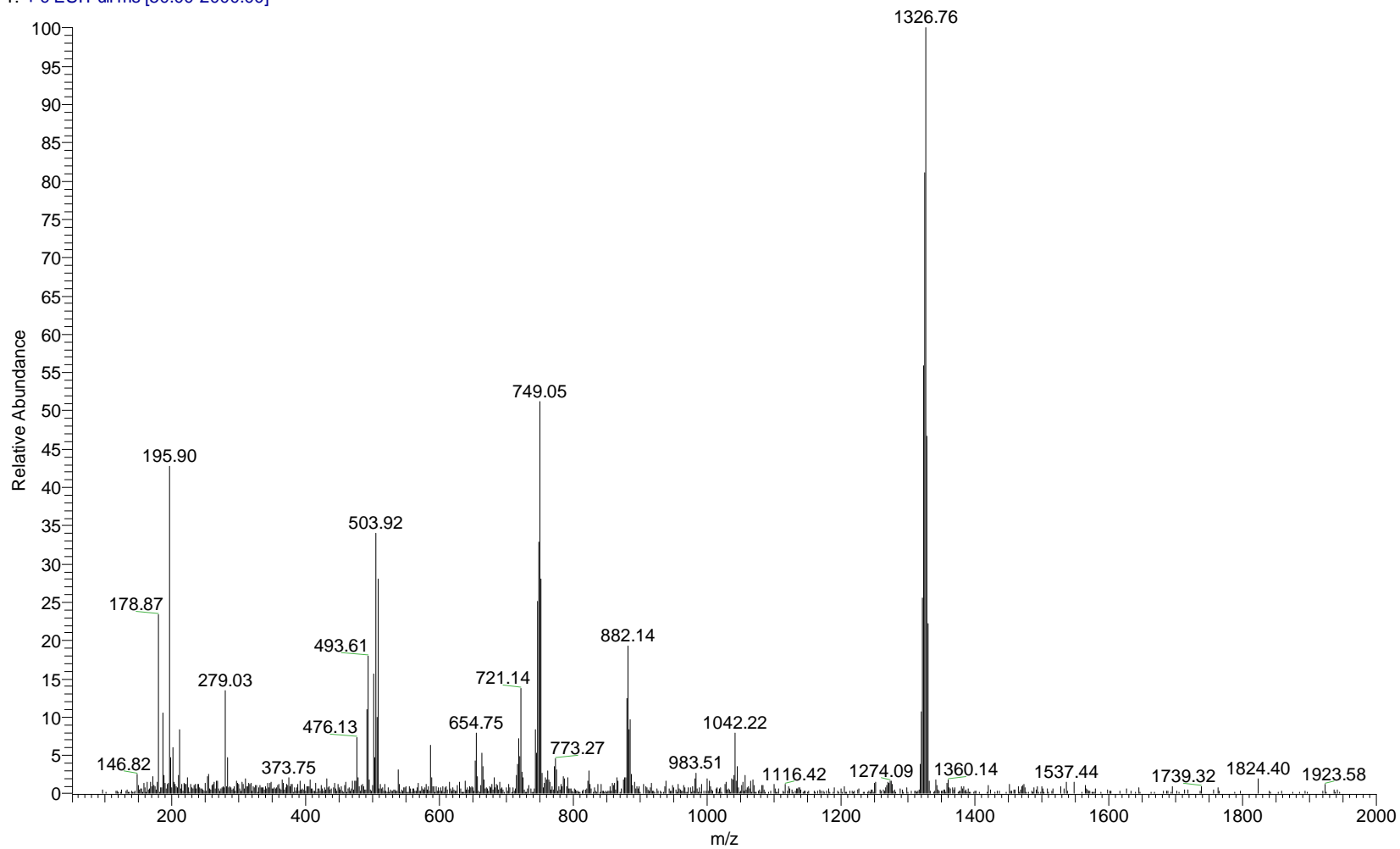


E:\Student\Geqch\Ru-dppf-Re-terpy  
CH<sub>2</sub>Cl<sub>2</sub>, 150C

6/20/2007 10:43:16 AM

Ru-dppf-Re-terpy

Ru-dppf-Re-terpy #13-15 RT: 0.34-0.39 AV: 3 NL: 2.86E7  
T: + c ESI Full ms [50.00-2000.00]



E:\Student\Geqch\Ru-PPh3-Re-bpy  
CH2Cl2, 150C

6/20/2007 10:49:43 AM

Ru-PPh3-Re-bpy

Ru-PPh3-Re-bpy #12-14 RT: 0.31-0.37 AV: 3 NL: 8.65E7  
T: + c ESI Full ms [50.00-2000.00]

