

Table S1.

	$\nu_{\text{as}}\text{COO}^-$	$\nu\text{C}=\text{N}, \nu\text{C}=\text{C}$	$\nu_{\text{s}}\text{COO}^-$	νClO_4^-	$\nu\text{H}_2\text{O}$	600-700 cm^{-1}
1	1604,	1573 , 1553	1444	1144,1116,1090	3424	627
2	1604	1575	1444, 1402	1119, 1090	3439	626
3	1604,	1593	1444, 1401, 1384	1146, 1088	3424	626

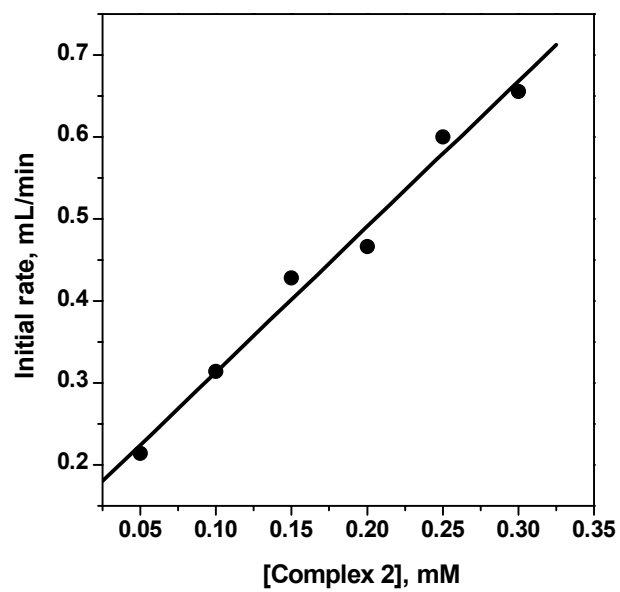


Figure S1.

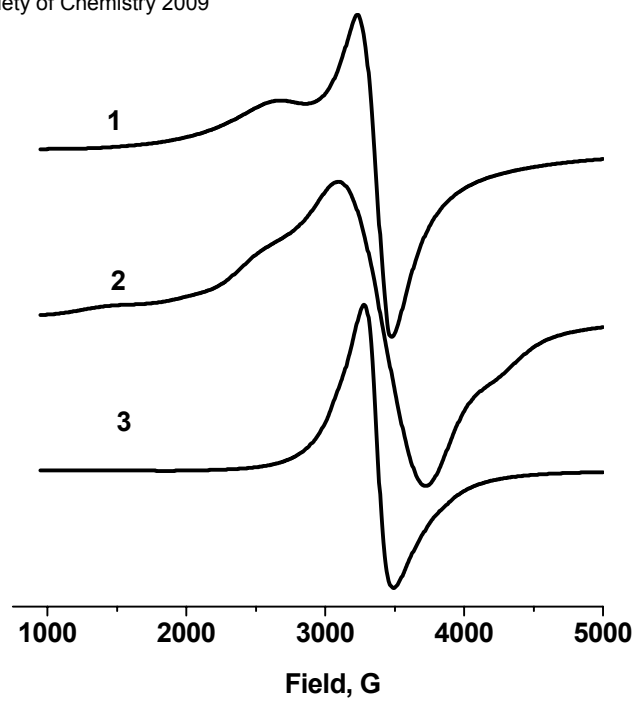


Figure S2.

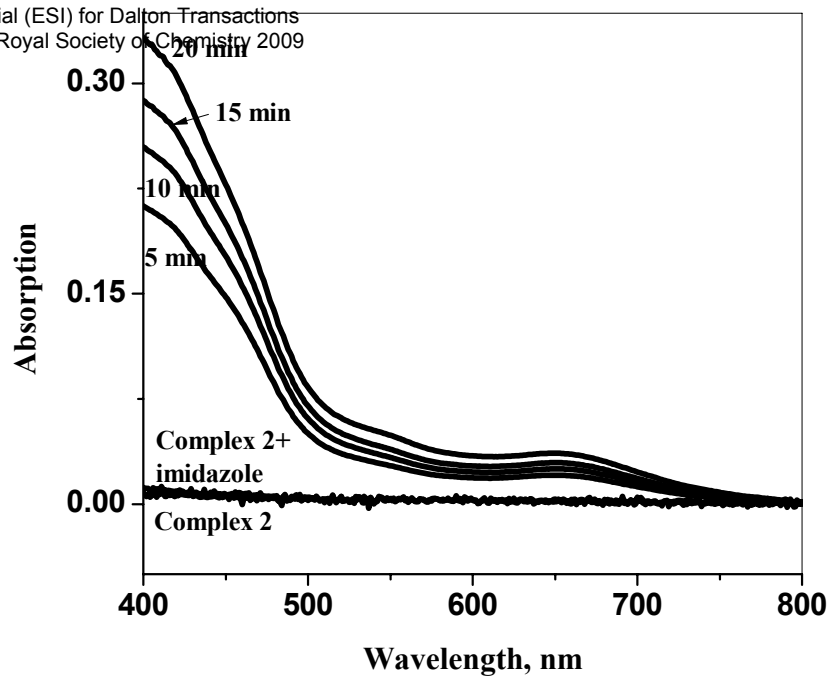


Figure S3.