

Supplementary Materials for **B910133K**

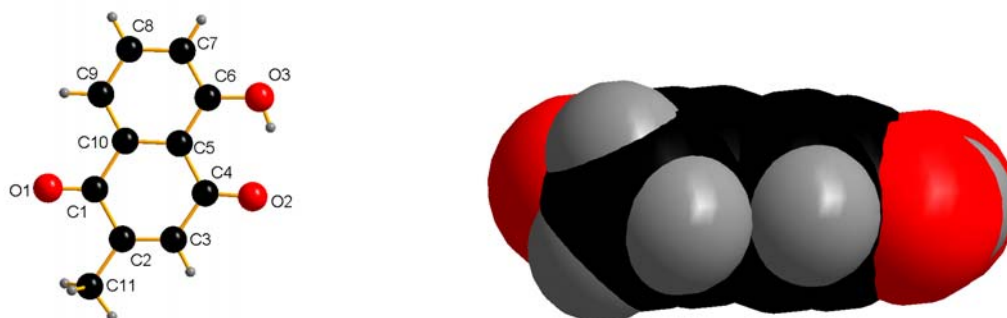


Fig. S1 Crystal structure of PLN (left) and space filling drawing of PLN (right).

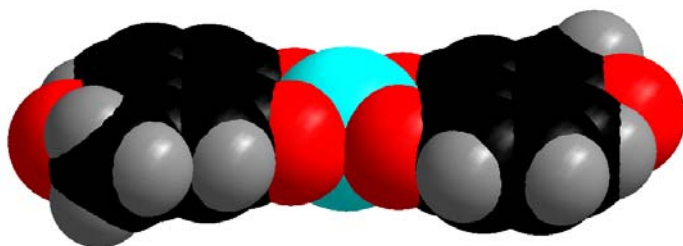


Fig. S2a. Space filling drawing of complex 1.

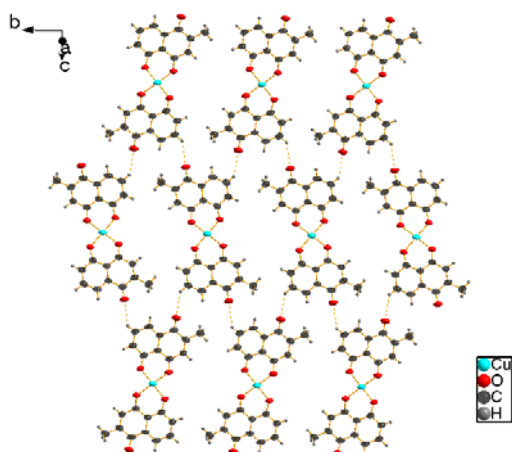


Fig. S2b. Two dimensional network of complex 1 *via* nonclassical hydrogen bonds of C–H...O, view from *a* direction.

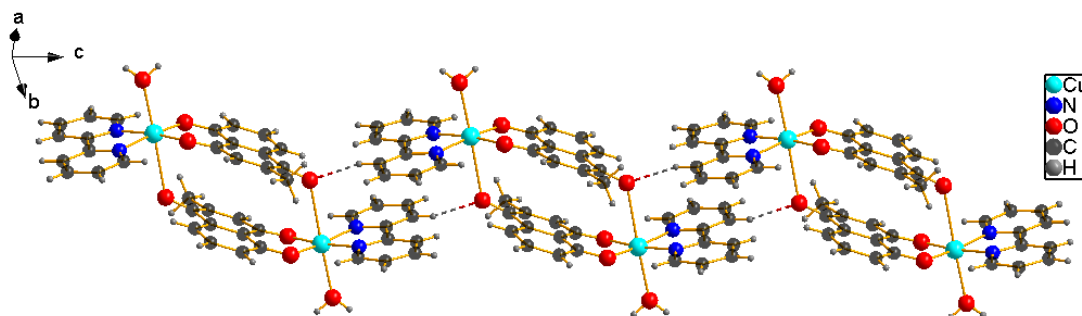


Fig. S3 1D chain structure of complex 2 formed by intermolecular hydrogen bonding.

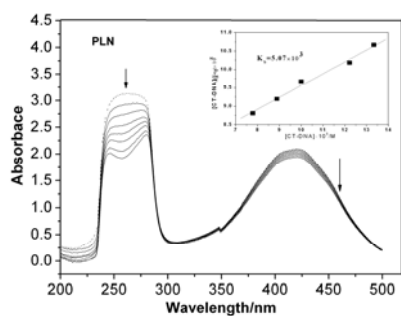


Fig.S4 UV-vis spectra of PLN (6.0×10^{-4} M) in the absence (----) and presence (—) of increasing amounts of DNA (2.1×10^{-3} M, 10 μ l DNA per scan).

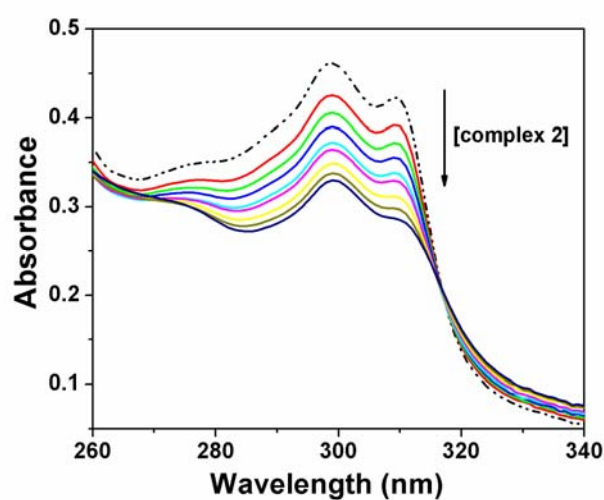


Figure S5. UV-Vis absorption of complex **2** by titration of SDS with increasing concentration. (The concentration of complex **2** is 2×10^{-5} mol/L, while the stock solution of SDS for titration was prepared as 2×10^{-2} mol/L. The dashed line and the solid lines represent the absorption band of complex **2** in the absence and presence of SDS, respectively.)

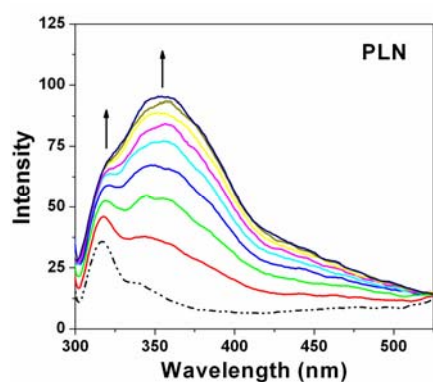


Fig. S6 Emission spectra of PLN (1.0×10^{-4} M, excited at 282 nm) in the absence (----) and presence (—) of increasing amounts of DNA (2.1×10^{-3} M, 50 μ l per scan).

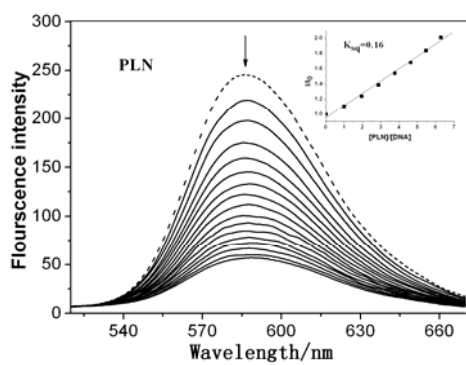


Fig. S7 Emission spectra of DNA–EB system (3 ml solution , [DNA]/[EB] ratio of 6:1 ,excited at 350 nm) in the absence (----) and presence (—) of increasing amounts of PLN. PLN(6.0×10^{-3} M).