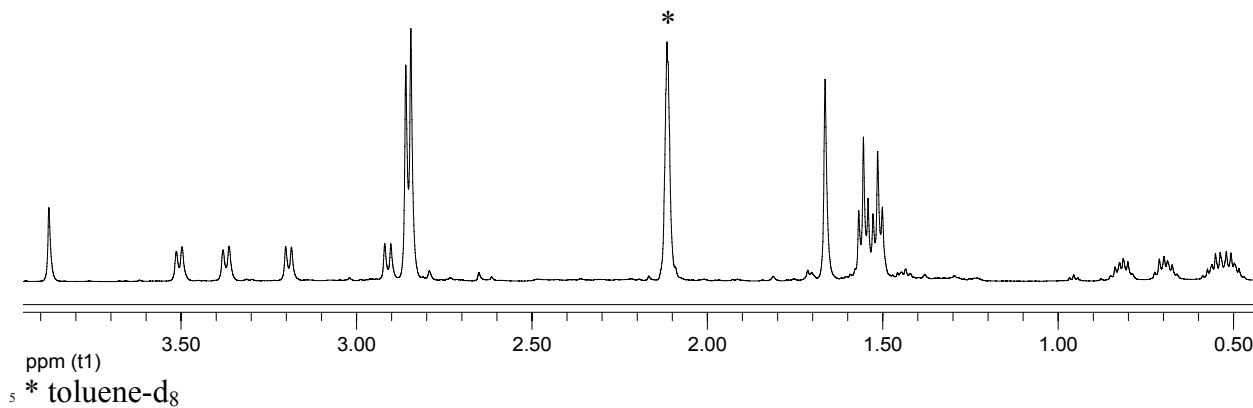
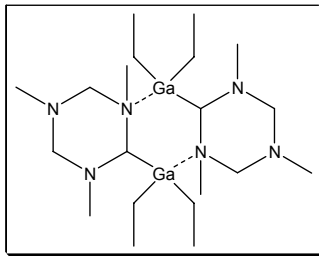
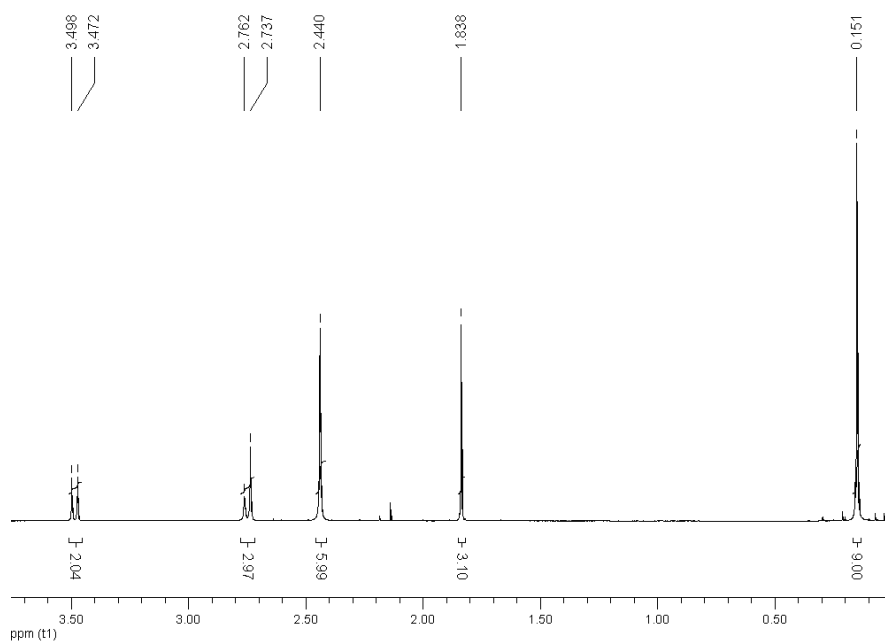
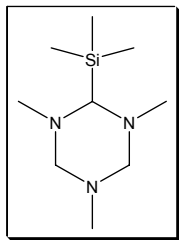


Supporting Information

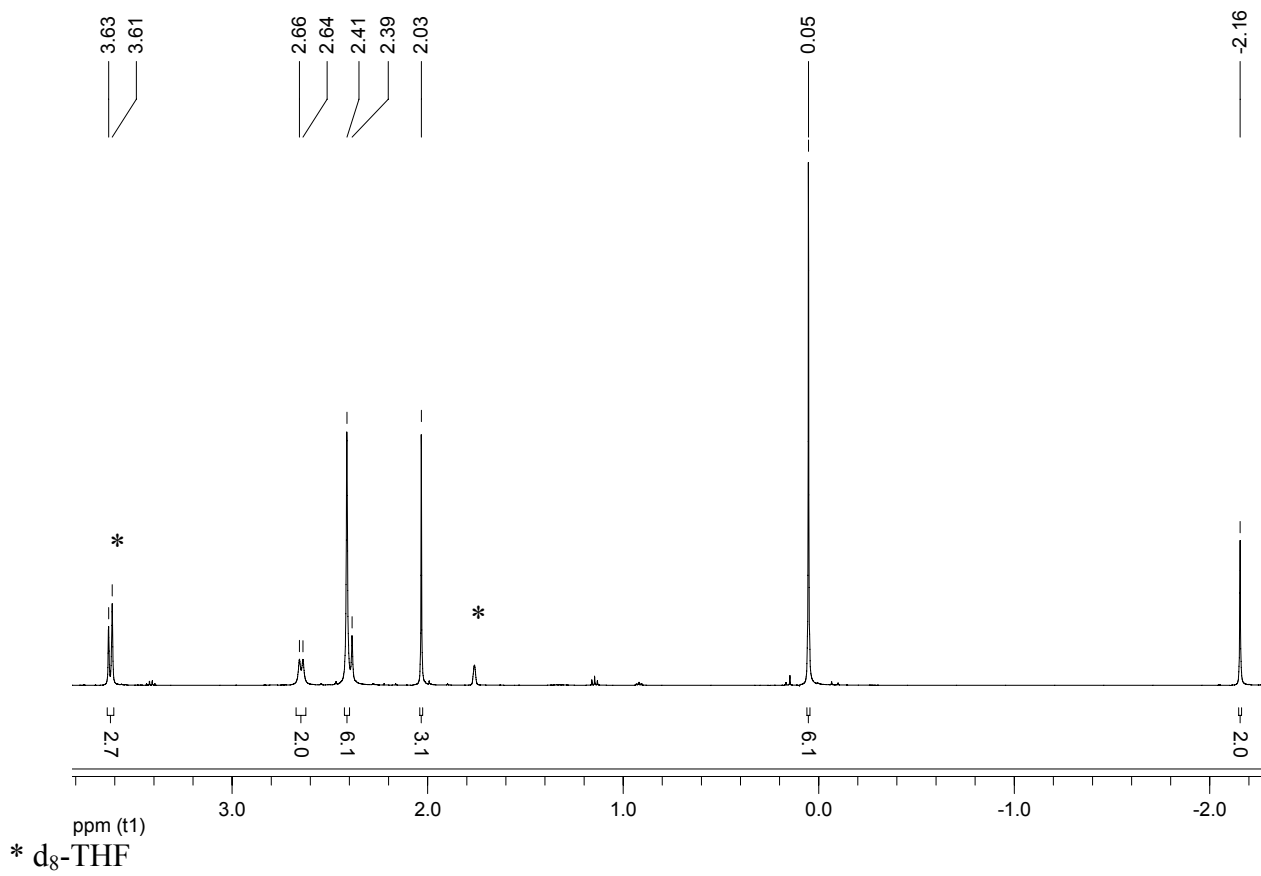
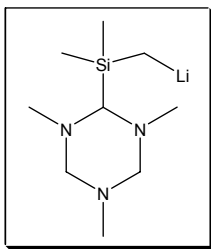
^1H NMR of **1c** (600 MHz, 243 K):



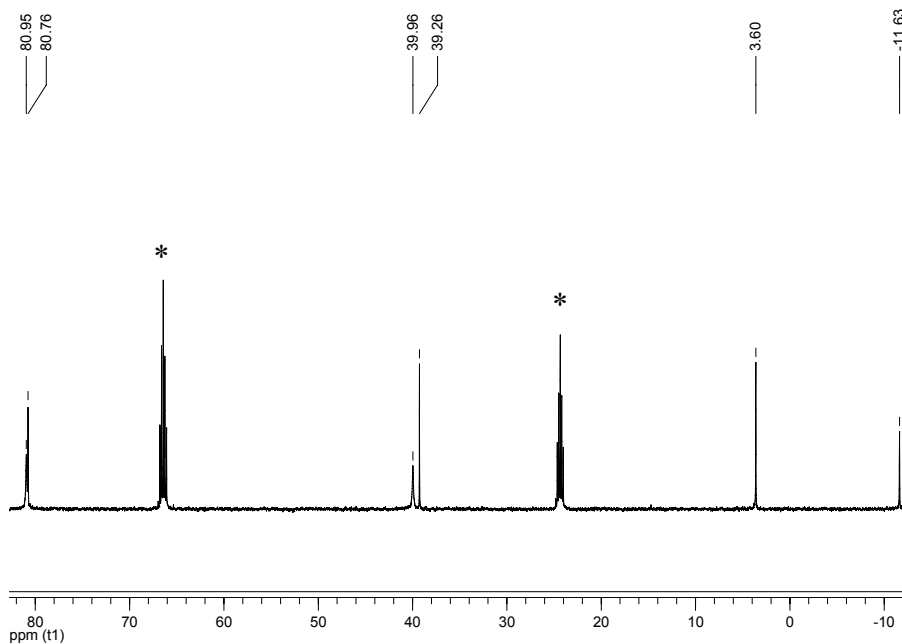
^1H NMR of **2** (500 MHz, C₆D₆):



¹⁰ ^1H NMR of **3** (500 MHz):

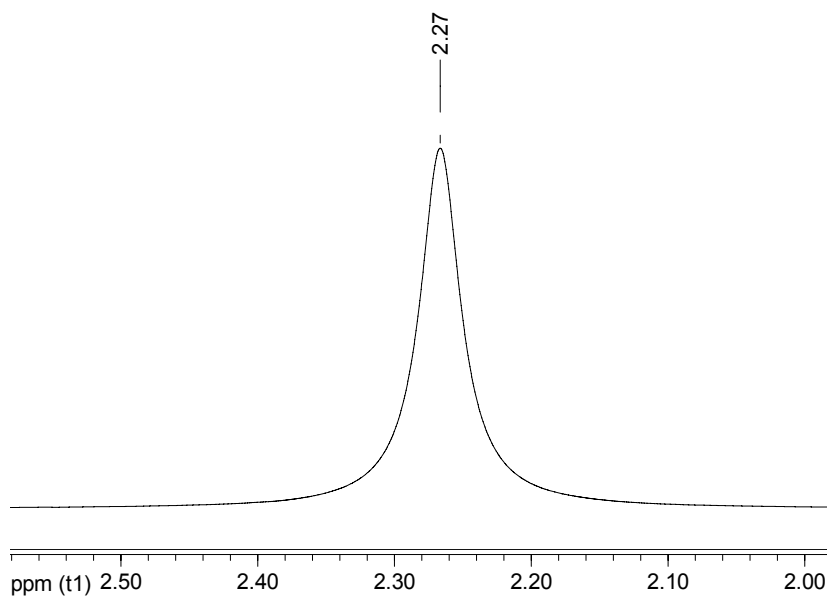


^{13}C NMR of **3** (125 MHz, d_8 -THF):



* d_8 -THF

⁵ ^7Li NMR of **3** (194 MHz, d_8 -THF):



Elemental analysis of **3**:

¹⁰ Found: C, 52.64; H, 10.75; N, 20.47. Calc. for $\text{C}_9\text{H}_{22}\text{LiN}_3\text{Si}$ (207.17): C, 52.14; H, 10.70, N, 20.27%.