

Supplementary material

Fig. S1

(A) ^1H 1D spectra of aromatic and (B) aliphatic region of the free 9aa peptide (orange) and in the presence of 0.5 (green) and 1.0 (blue) equiv of Zn(II) at pH 6.1. The insets show the expanded ^1H -NMR spectrum of the most affected proton signals: HN (a) and $\text{H}_{\delta 2}$ of H_6 (b), Q_γ of T_7 (c) and Q_γ of E_9 (d), respectively.

Fig. S1(A)

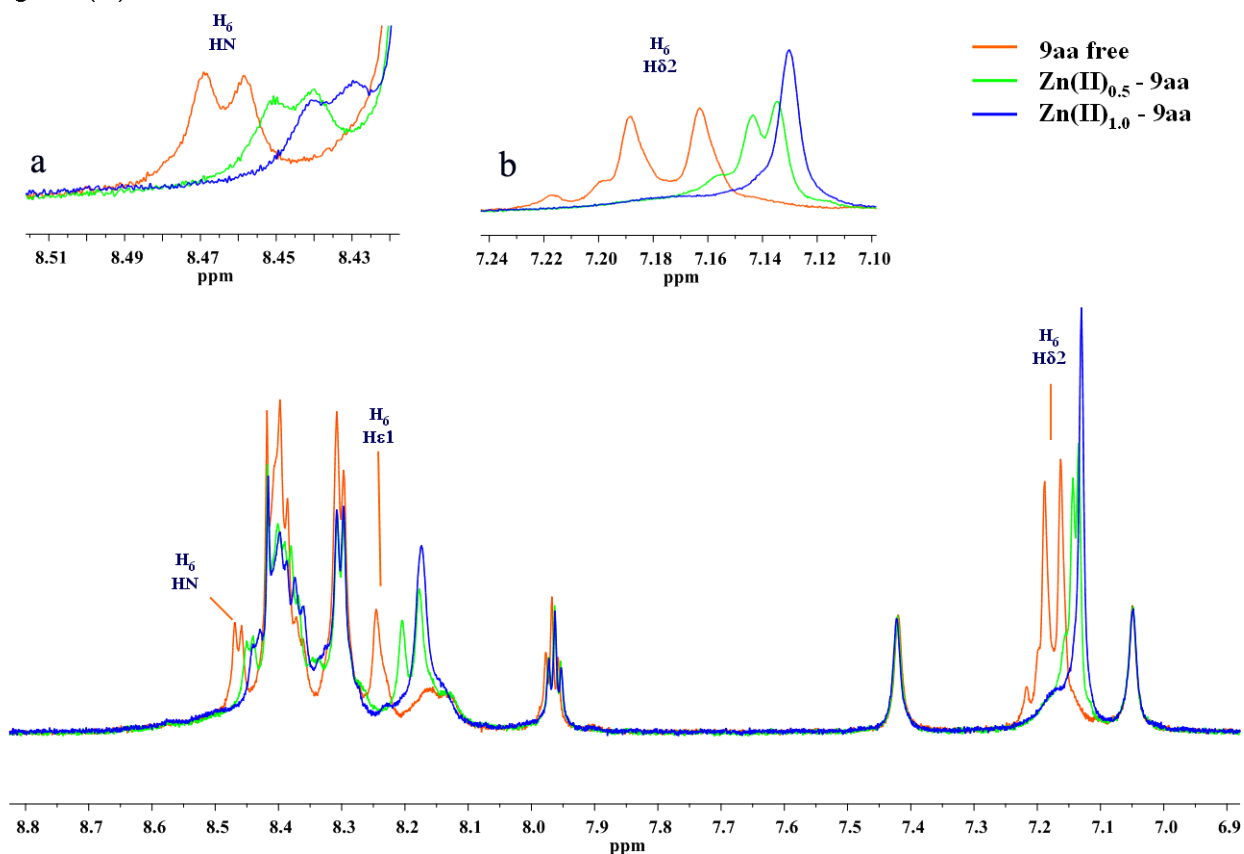


Fig. 1S(B)

