

Supporting Information

Structures and magnetism of azide- and carboxylate-bridged metal(II) systems derived from 1,2-bis(N-carboxymethyl-4-pyridinio)ethane

Yu Ma, Yan-Qing Wen, Jian-Yong Zhang, En-Qing Gao,* and Cai-Ming Liu

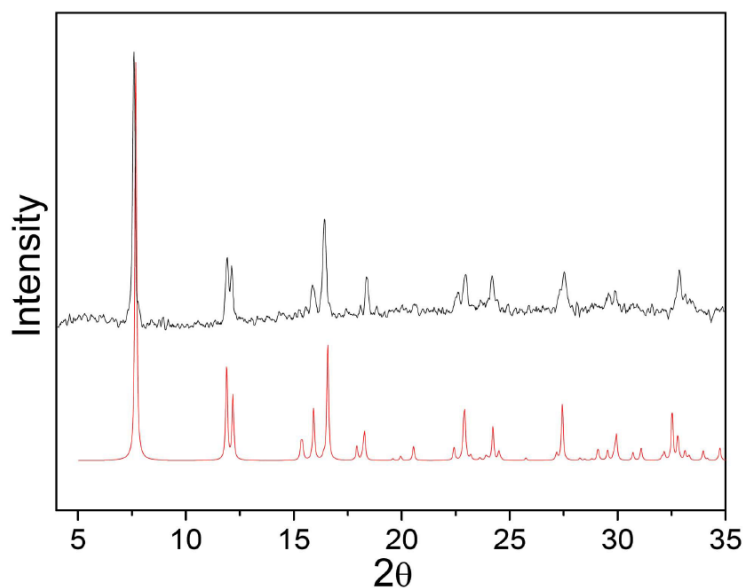


Fig. S1 Comparison of the XRD patterns measured for **3** (black) and that calculated from the single-crystal data of **2** (red)

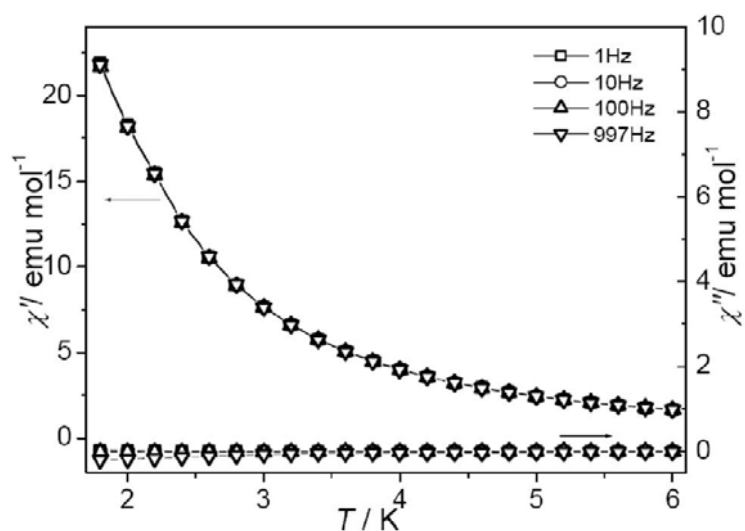


Fig. S2 Temperature dependence of ac susceptibilities of **2** at different frequencies