

Supplementary data

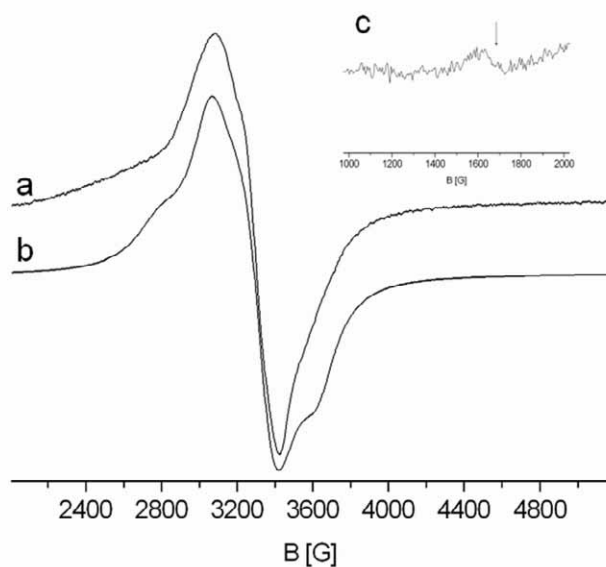


Fig. S1. Powder EPR spectra of [Cu(1)(tpy)₂][PF₆]₄ at (a) 130K, with (b) its simulation. (c) Zoom in the low field region of the EPR spectrum.

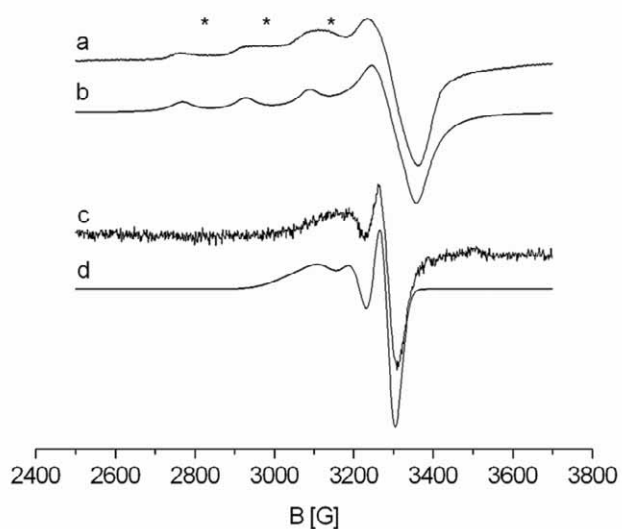


Fig. S2. EPR spectra of [Cu(1)(tpy)₂][PF₆]₄ in DMSO at (a) 130K (a) and (c) 295K, with their simulations (b and d, respectively). The asterisks (*) indicate the presence of a second (minor) paramagnetic species. Simulation of (a) was with a Gaussian lineshape $\Gamma = 50, 50, 32$ G; simulation of (c) was with Lorentzian lineshape $a = 45$ G, $b = 10$ G, $c = 4$ G.