

Electronic Supplementary Information (ESI) for

**Mono- and bis-amidinate 2,6-xylylimido vanadium chlorides:
synthesis, structure, and reactivity.**

**Sinai Aharonovich, Mark Botoshanski, Boris Tumanskii, Kotohiro Nomura, Robert M. Waymouth
and Moris S. Eisen**

*To whom correspondence should be addressed. E-mail: chmoris@tx.technion.ac.il

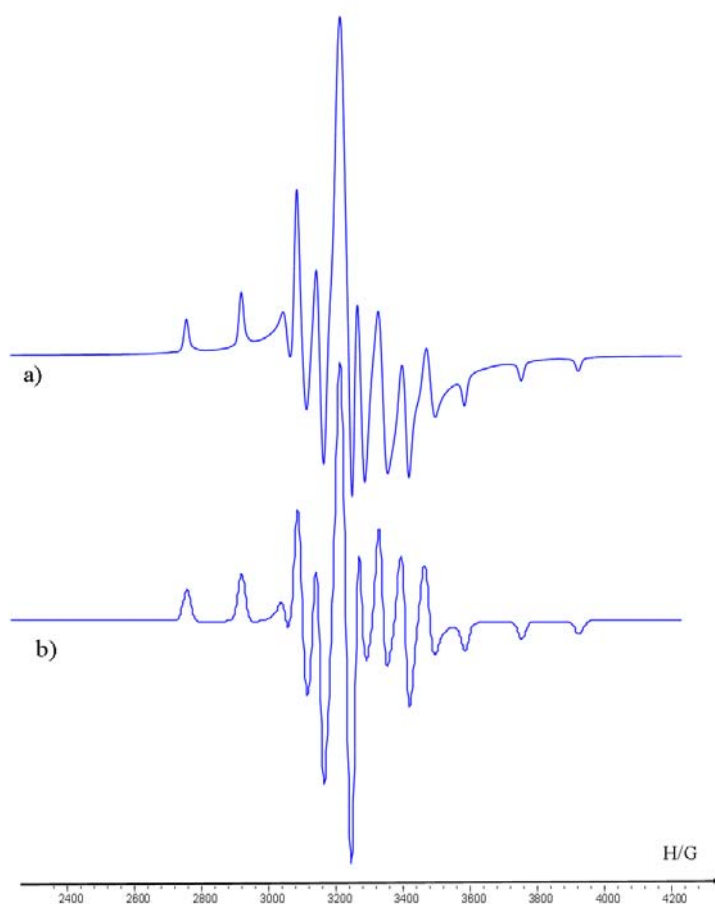


Fig. S1 (a) ESR spectrum of frozen solution of complex **6** (130K, toluene-*d*8) and (b) its simulation. The result of the simulation of anisotropic signal with the EasySpin toolbox for Matlab (Stoll, S.; Schweiger, A. *J. Magn. Reson.* **2006**, 178, 42–55) agrees reasonably well with the experimental one.