

*Electronic Supporting Information for*

## **Transformation from $[\text{W}_6\text{O}_{19}]^{2-}$ to $[\text{W}_6\text{O}_{22}]^{8-}$ Stabilized by Cu(II) Complexation**

**Feng-Yun Cui,<sup>a</sup> Kun-Lin Huang,<sup>b</sup> Xiao-Yu Ma,<sup>a</sup> Cong Li,<sup>a</sup> Zhan-Gang Han,<sup>a</sup> Yuan-Ge Gao,<sup>a</sup> Xi Liu,<sup>b</sup> Ying-Nan Chi\*<sup>a</sup> and Chang-Wen Hu\*<sup>a</sup>**

<sup>a</sup> *The Institute for Chemical Physics, and Department of Chemistry, Beijing Institute of Technology, Beijing 100081, China. Fax: ++86-10-68912631; Tel: +86-10-68912631; E-mail: [cwhu@bit.edu.cn](mailto:cwhu@bit.edu.cn)*

<sup>b</sup> *College of Chemistry, Chongqing Normal University, Chongqing 400047, China.*

### **Contents:**

**Figure S1.** A 1-D chain structure composed of  $[(\text{H}_2)\text{W}_{12}\text{O}_{40}]^{6-}$  and Cu(II) complex.

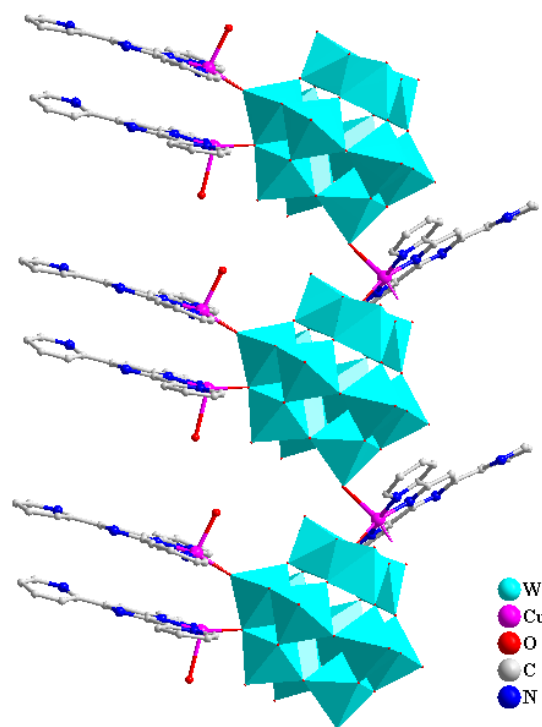
**Figure S2.** Infrared spectrum of compound **1**.

**Figure S3.** Infrared spectrum of compound **2**.

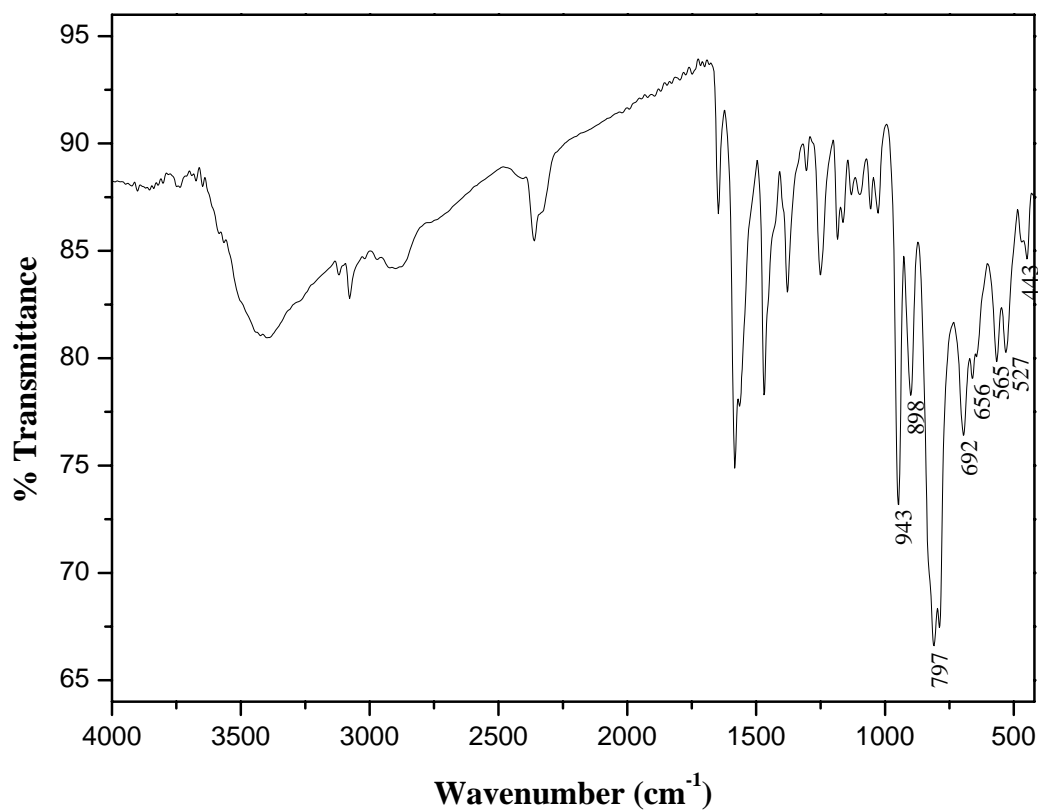
**Figure S4.** TG curve for compound **1**.

**Figure S5.** The XPRD patterns of compound **1**.

1



**Figure S1.** a 1-D chain structure composed of  $[(\text{H}_2)\text{W}_{12}\text{O}_{40}]^{6-}$  and Cu(II) complex.



**Figure S2.** Infrared spectrum of compound 1.

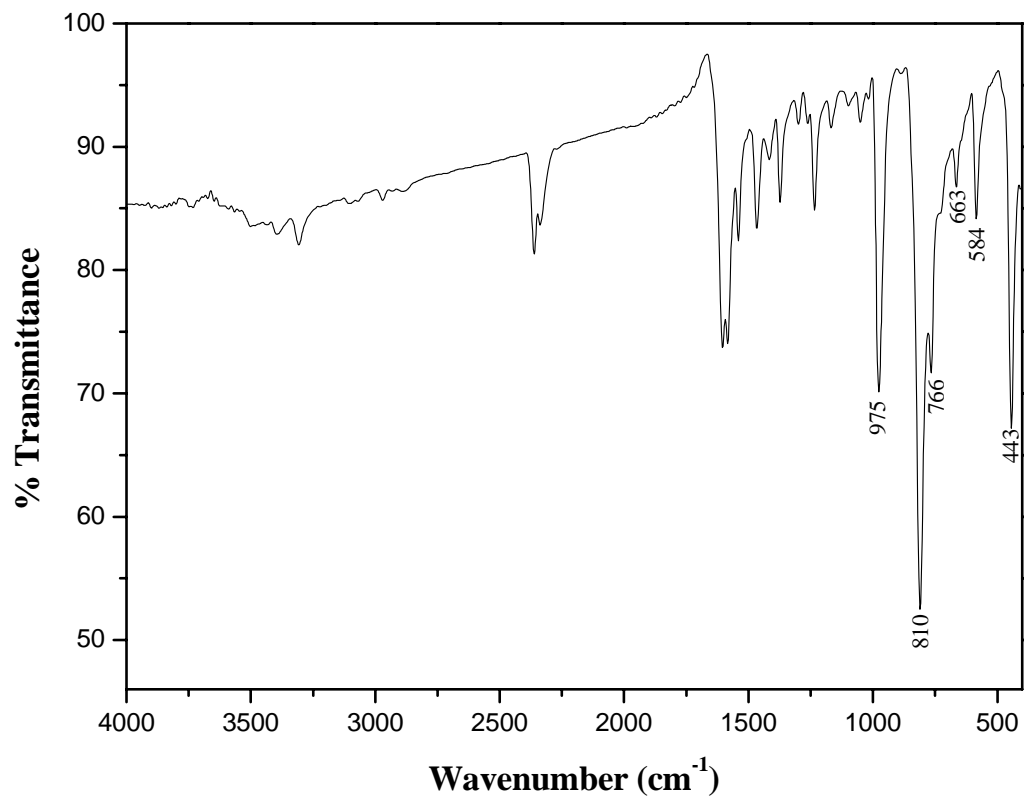


Figure S3. Infrared spectrum of compound 2.

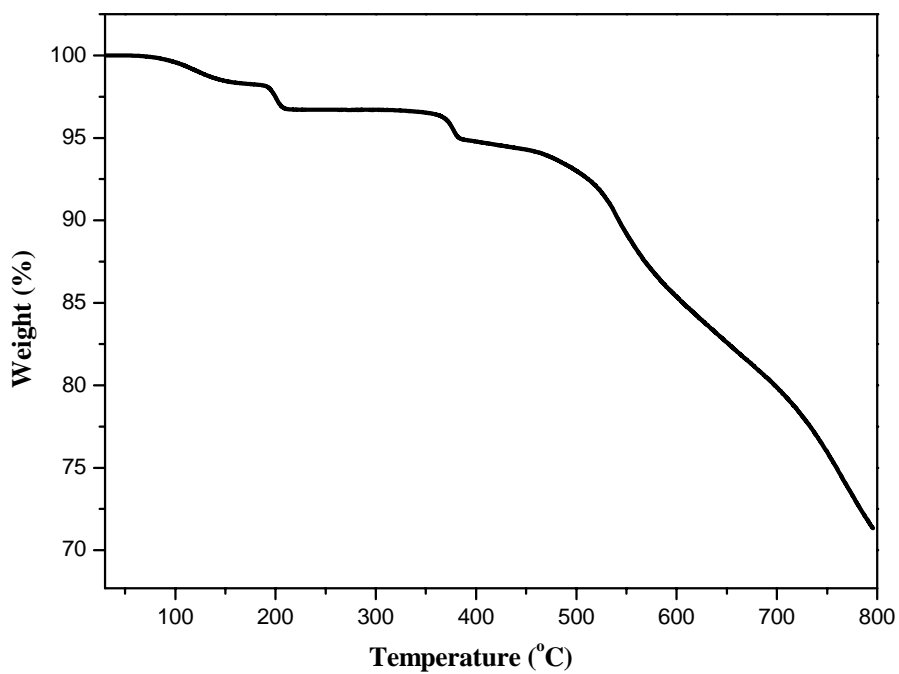
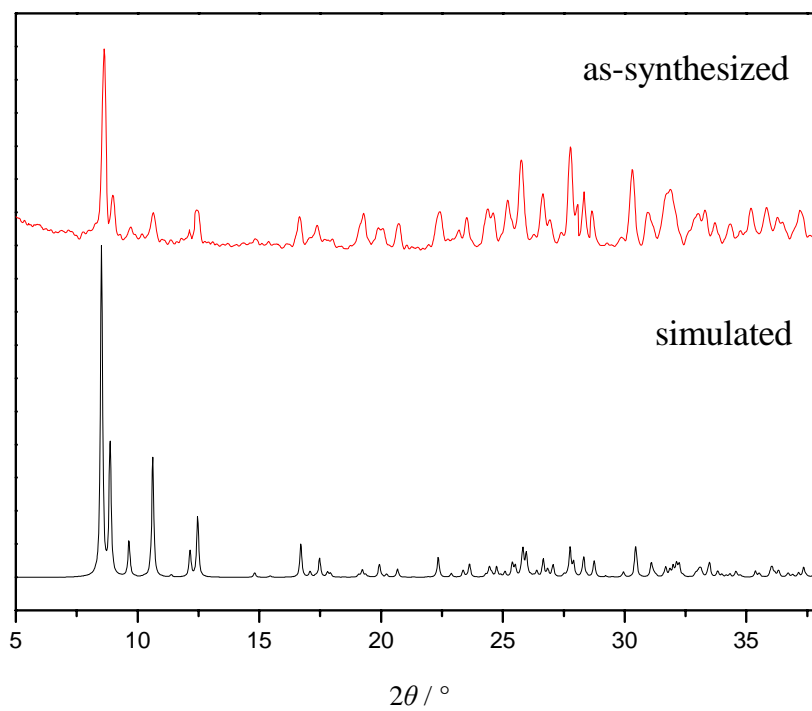


Figure S4. TG curve for compound 1.



**Figure S5.** The XPRD patterns of compound **1**.