

Figure S1 : Plot of the normalized relative intensities of the intermediate / the mono complex versus the time, as measured by ^1H -NMR spectroscopy. The arrow indicates when the mono complex formation was completed.

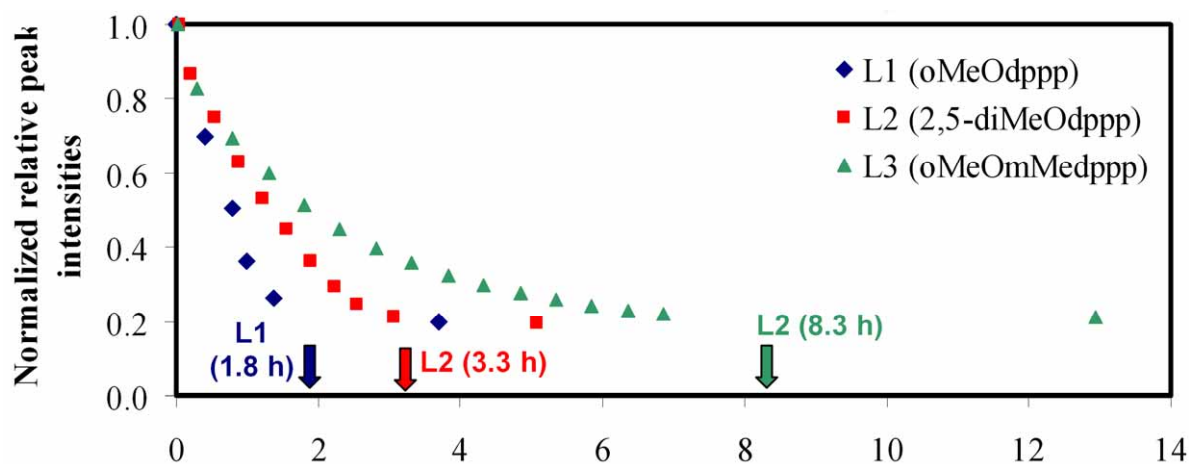


Figure S2: Plot of the ^1H (left) and ^{31}P (right) NMR spectra of $[\text{Pd}(\text{L3})_2](\text{OTs})_2$ in $(\text{CD}_3)_2\text{CO}$ (top) and $[\text{Pd}(\text{L3})_2](\text{OAc})_2$ in $\text{MeOD}/\text{CD}_2\text{Cl}_2$ (bottom), showing that the structure of the complex is the same for both anions.

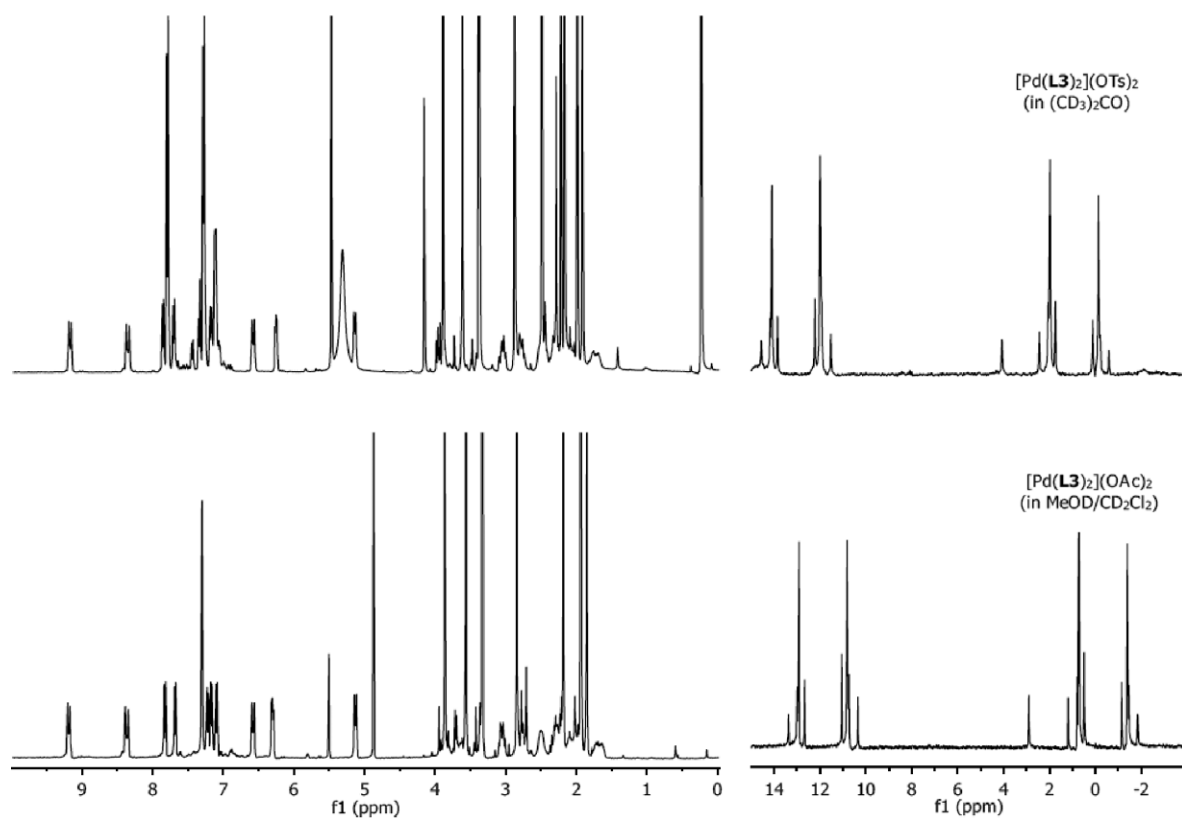


Figure S3: Plot of the ^1H - (top) and $^1\text{H}\{^{31}\text{P}\}$ - (bottom) NMR spectra of $[\text{Pd}(\text{L}3)_2](\text{OTs})_2$ in $(\text{CD}_3)_2\text{CO}$.

