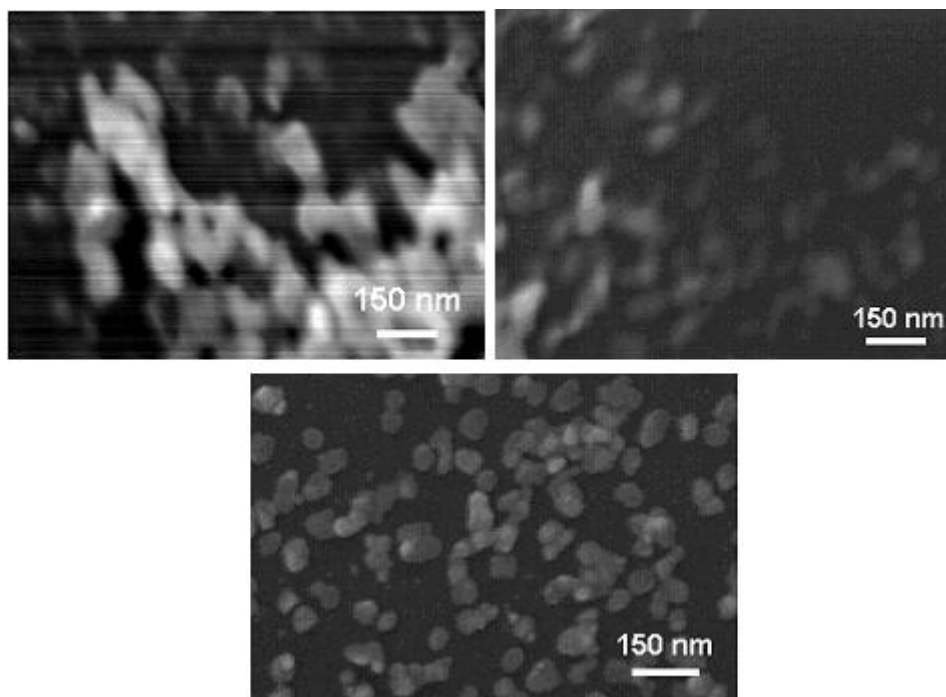
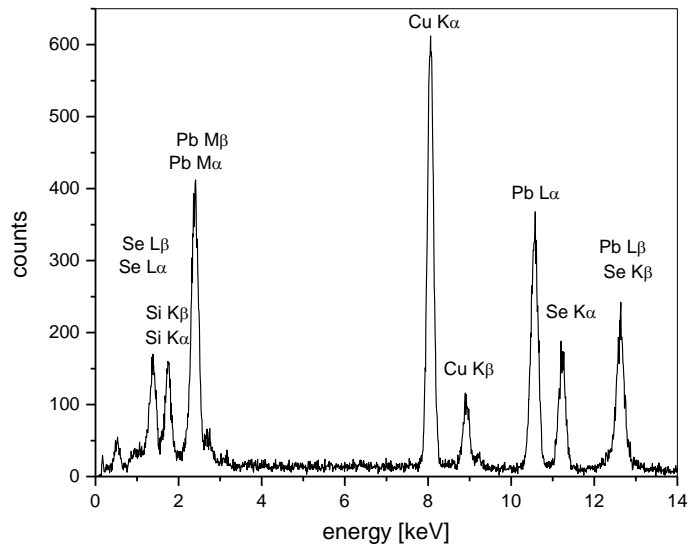


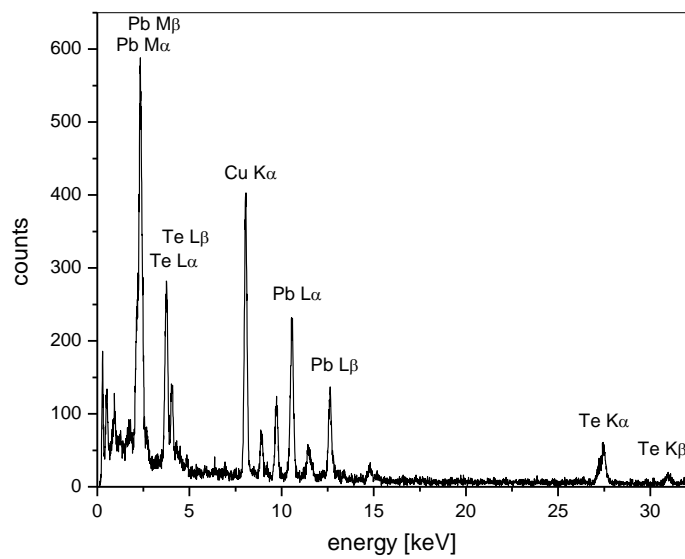
## Supporting Information



**Figure S1.** Film of PbSe particles obtained from a polymer/precursor mixture with a 1:1 ratio. The reaction conditions were 20 min at 450 °C (top, left), 30 min at 425 °C (top, right) and 20 min at 425 °C (bottom).



**Figure S2.** TEM EDX spectrum of the lead selenide particles.



**Figure S3.** TEM EDX spectrum of the lead telluride particles.