

Electronic Supplementary Information (ESI) For: Controlling growth of low dimension nanostructures of iridium complex

Haowei Lin^{a,b}, Huibiao Liu^{*a}, Xuemin Qian^a, Canbin Ouyang^a, Yuliang Li^{*a}

Received (in XXX, XXX) Xth XXXXXXXXXX 201X, Accepted Xth XXXXXXXXXX 201X

First published on the web Xth XXXXXXXXXX 201X

DOI: 10.1039/b000000x

^aCAS Key Laboratory of Organic Solids, Beijing National Laboratory for Molecular Sciences (BNLMS), Institute of Chemistry, Chinese Academy of Sciences, Beijing, 100190, P. R. China.

^bGraduate University of Chinese Academy of Sciences, Beijing 100190, P.R. China.

E-mail: ylli@iccas.ac.cn, liuhb@iccas.ac.cn.

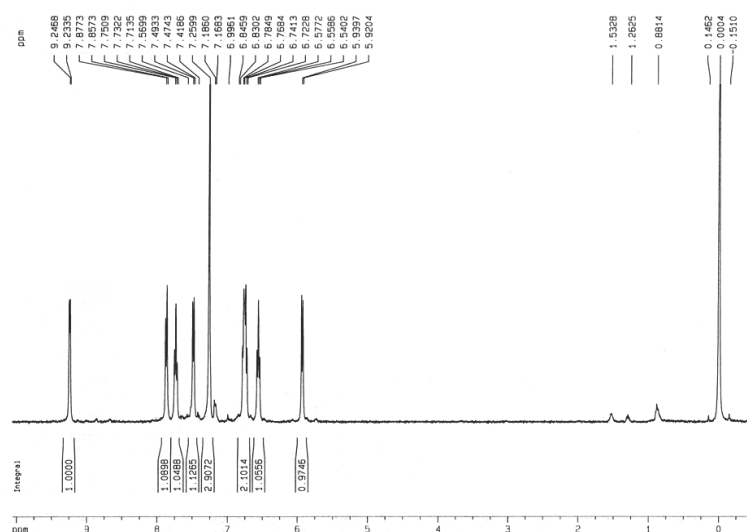


Fig. S1 ¹H NMR spectrum of IPPC in trichloromethane-d, ppm: 9.23 (1H), 7.86 (1H), 7.73 (1H), 7.47 (1H), 6.83(2H), 6.56 (1H), 5.92 (1H).

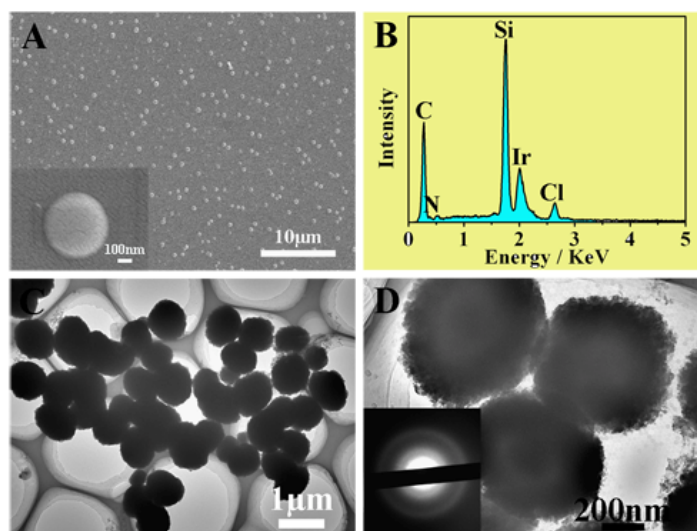


Fig. S2 SEM images of IPPC nanoparticles: (A) top view of a mass of IPPC nanoparticles; The inset in (A) is the SEM image of a single IPPC nanoparticle; (B) EDS pattern of IPPC nanoparticle. TEM images of IPPC nanoparticles: (C) IPPC nanoparticles; (D) a few IPPC nanoparticles under a higher magnification. The inset in (D) is the SAED pattern taken from IPPC nanoparticle.