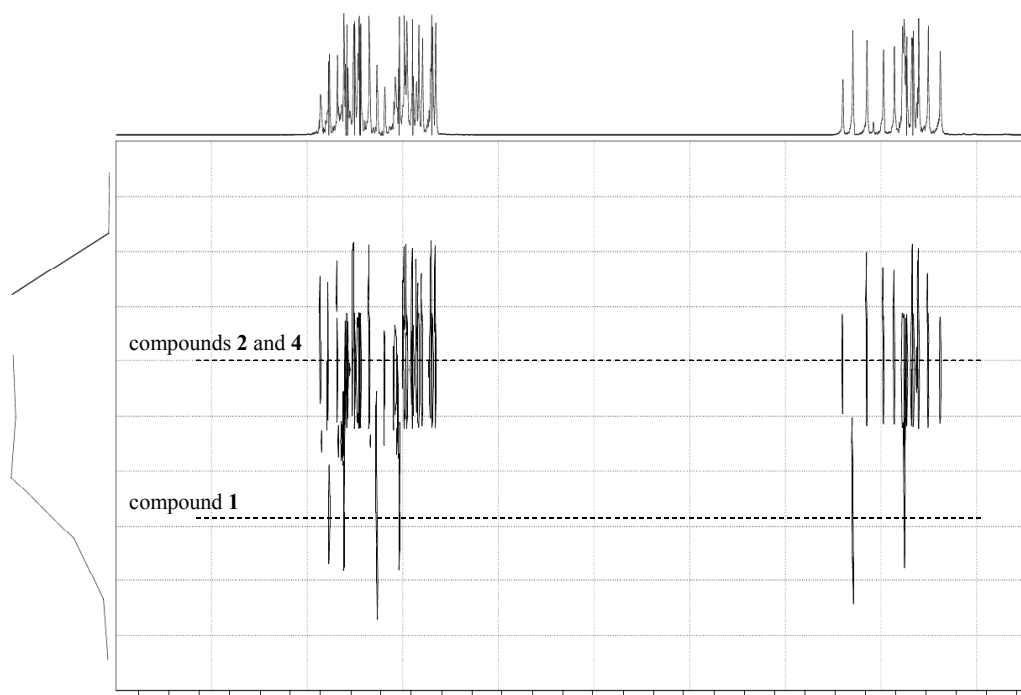


**Figure 1.**  $^1\text{H}$ -NMR spectrum of **4** in  $\text{CDCl}_3$ , showing the regions of the *Me*-Cp protons (a) and the *Me*-Si protons (b).



**Figure 2.**  $^1\text{H}$  DOSY spectrum of a mixture of **1**, **2**, and **4** in  $\text{CDCl}_3$ . The x- and y-axis represent the regular  $^1\text{H}$  chemical shift and the relative diffusion rate, respectively.