

Electronic Supplementary Information

A Novel Amphiphilic Pincer Palladium Complex: Design, Preparation and Self-Assembling Behavior

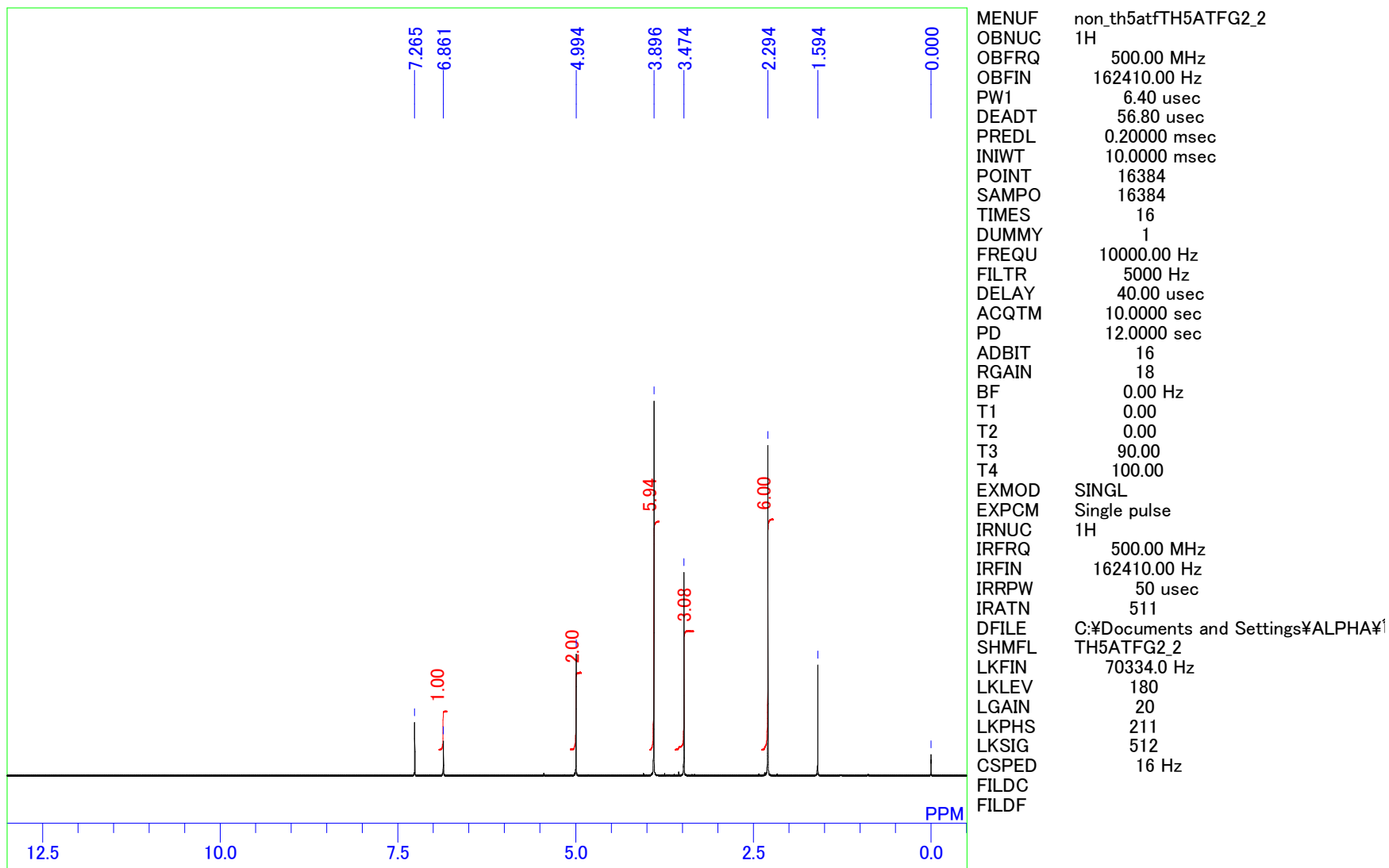
*Go Hamasaka, Tsubasa Muto and Yasuhiro Uozumi**

Institute for Molecular Science, Higashi-yama 5-1, Myodaiji, Okazaki 444-8787, Japan
The Graduate University for Advanced Studies, Higashi-yama 5-1, Myodaiji, Okazaki 444-8787, Japan
RIKEN, Hirosawa, Wako 351-0198, Japan

E-mail: uo@ims.ac.jp, uo@riken.jp

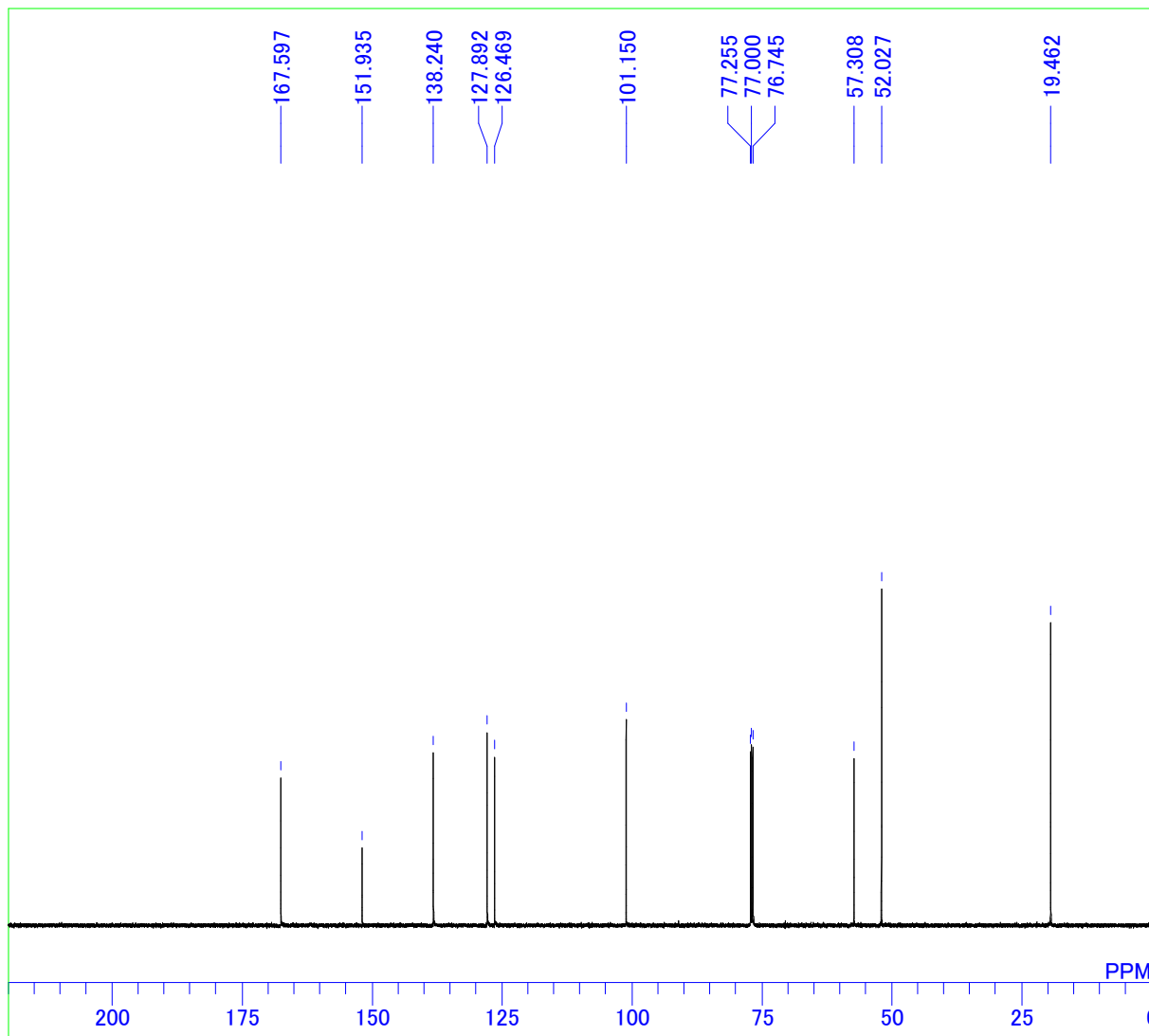
¹H NMR of 4,6-dimethyl-2-methoxymethoxyisophthalic acid dimethyl ester (11)

C:\Documents and Settings\ALPHA\11-11-11\UozumiG\muto\full data\MOM1(TM5061-02-1H).als



¹³C NMR of 4,6-dimethyl-2-methoxymethoxyisophthalic acid dimethyl ester (11)

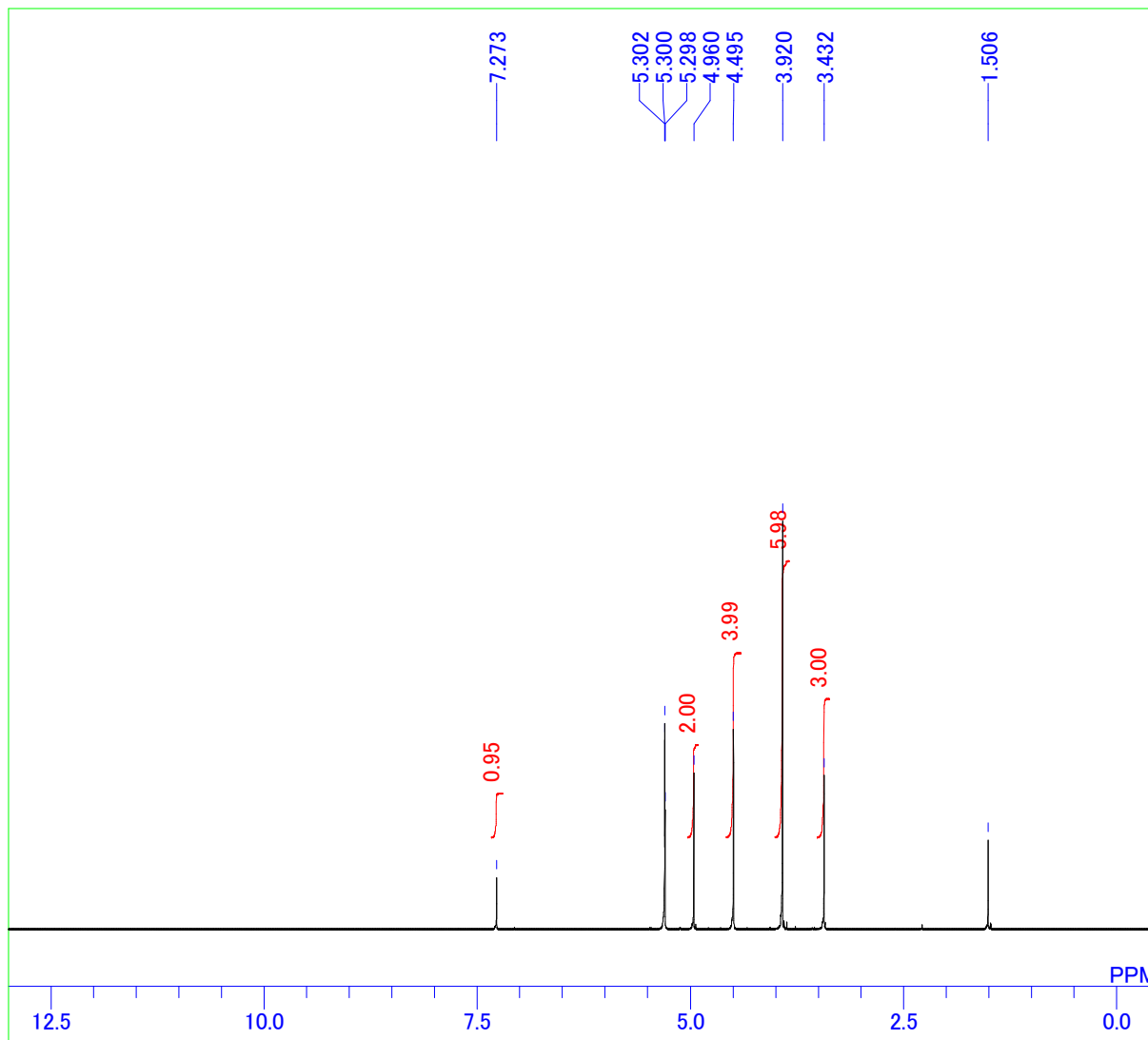
C:\Documents and Settings\ALPHA\11-11-11\UozumiG\muto\TMEXP0500-0599\TM5061-02-13C-f.als



MENUF bcm_th5atfTH5ATFG2_2
OBNUC 13C
OBFRQ 125.65 MHz
OBFIN 127958.00 Hz
PW1 5.75 usec
DEADT 10.00 usec
PREDL 0.20000 msec
INIWT 10.0000 msec
POINT 32768
SAMPO 32768
TIMES 4000
DUMMY 1
FREQU 33898.30 Hz
FILTR 16950 Hz
DELAY 11.80 usec
ACQTM 0.9667 sec
PD 1.0000 sec
ADBIT 16
RGAIN 27
BF 1.00 Hz
T1 0.00
T2 0.00
T3 90.00
T4 100.00
EXMOD SINGL
EXPCM Single pulse
IRNUC 1H
IRFRQ 500.00 MHz
IRFIN 162410.00 Hz
IRRPW 50 usec
IRATN 511
DFILE C:\Documents and Settings\ALPHA\11-11-11\UozumiG\muto\TMEXP0500-0599\TM5061-02-13C-f.als
SHMFL TH5ATFG2_2
LKFIN 70334.0 Hz
LKLEV 180
LGAIN 22
LKPHS 211
LKSIG 627
CSPED 12 Hz
FILDC
FILDF

¹H NMR of 4,6-bis(bromomethyl)-2-methoxymethoxy isophthalic acid dimethyl ester (12)

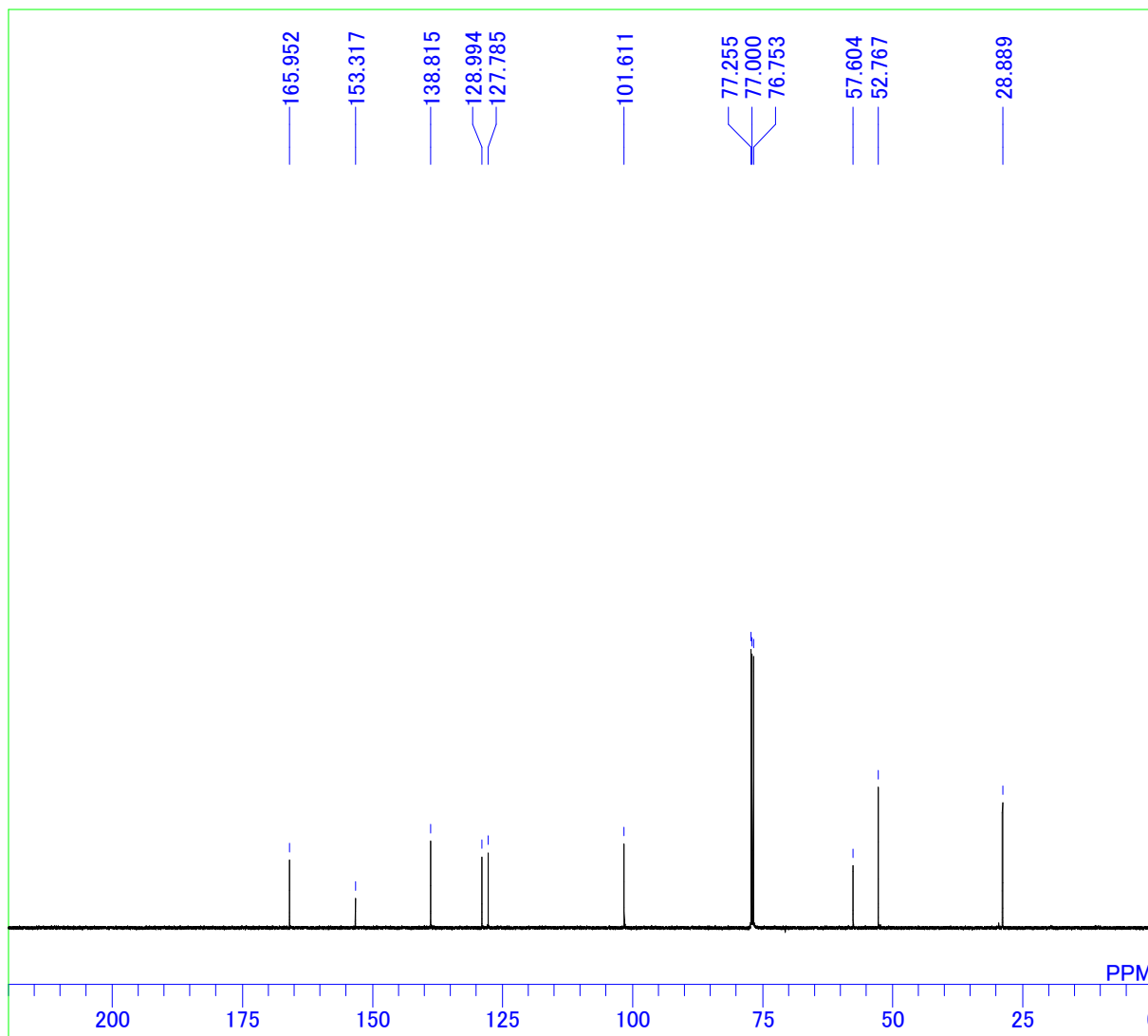
C:\Documents and Settings\ALPHA\11-11-11\UozumiG\muto\full data\Bromide(TM5062-03-1H).als



MENUF non_th5atfTH5ATFG2_2
OBNUC 1H
OBFRQ 500.00 MHz
OBFIN 162410.00 Hz
PW1 6.40 usec
DEADT 56.80 usec
PREDL 0.20000 msec
INIWT 10.0000 msec
POINT 16384
SAMPO 16384
TIMES 16
DUMMY 1
FREQU 10000.00 Hz
FILTR 5000 Hz
DELAY 40.00 usec
ACQTM 5.0000 sec
PD 7.0000 sec
ADBIT 16
RGAIN 24
BF 0.00 Hz
T1 0.00
T2 0.00
T3 90.00
T4 100.00
EXMOD SINGL
EXPCM Single pulse
IRNUC 1H
IRFRQ 500.00 MHz
IRFIN 162410.00 Hz
IRRPW 50 usec
IRATN 511
DFILE C:\Documents and Settings\ALPHA\1
SHMFL TH5ATFG2_2
LKFIN 70186.0 Hz
LKLEV 160
LGAIN 24
LKPHS 211
LKSIG 2879
CSPED 18 Hz
FILDC
FILDF

¹³C NMR of 4,6-bis(bromomethyl)-2-methoxymethoxy isophthalic acid dimethyl ester (12)

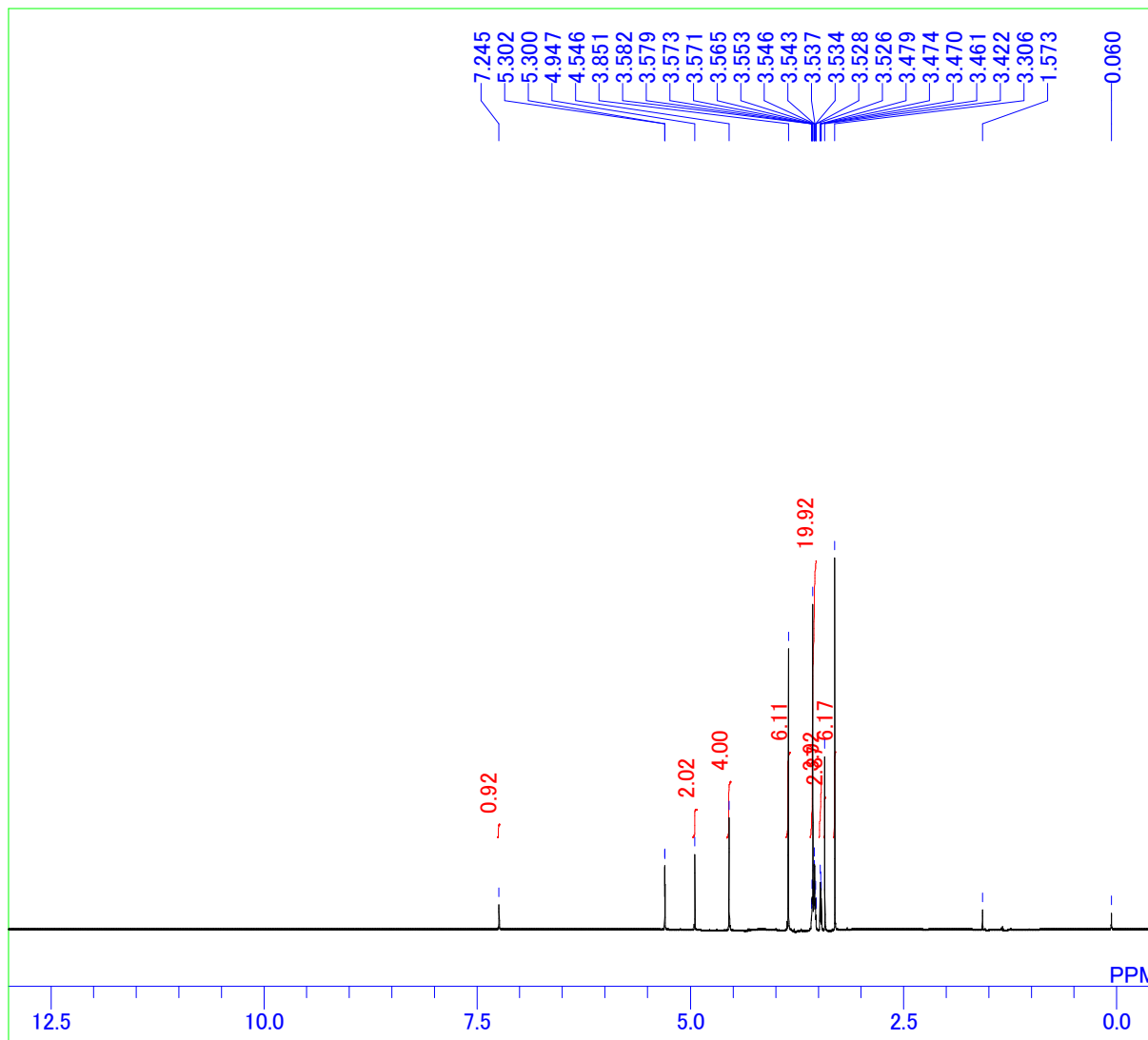
C:\Documents and Settings\ALPHA\11-11-11\UozumiG\muto\full data\Bromide(TM5062-02-13C).als



MENUF bcm_th5atfTH5ATFG2_2
OBNUC 13C
OBFRQ 125.65 MHz
OBFIN 127958.00 Hz
PW1 5.75 usec
DEADT 10.00 usec
PREDL 0.20000 msec
INIWT 10.0000 msec
POINT 32768
SAMPO 32768
TIMES 4000
DUMMY 1
FREQU 33898.30 Hz
FILTR 16950 Hz
DELAY 11.80 usec
ACQTM 0.9667 sec
PD 1.0000 sec
ADBIT 16
RGAIN 27
BF 1.00 Hz
T1 0.00
T2 0.00
T3 90.00
T4 100.00
EXMOD SINGL
EXPCM Single pulse
IRNUC 1H
IRFRQ 500.00 MHz
IRFIN 162410.00 Hz
IRRPW 50 usec
IRATN 511
DFILE C:\Documents and Settings\ALPHA\11-11-11\UozumiG\muto\full data\Bromide(TM5062-02-13C).als
SHMFL TH5ATFG2_2
LKFIN 70334.0 Hz
LKLEV 180
LGAIN 21
LKPHS 211
LKSIG 686
CSPED 17 Hz
FILDC
FILDF

¹H NMR of 2-methoxymethoxy-4,6-bis(2,5,8,11-tetraoxadodecyl)isophthalic acid dimethyl ester (13)

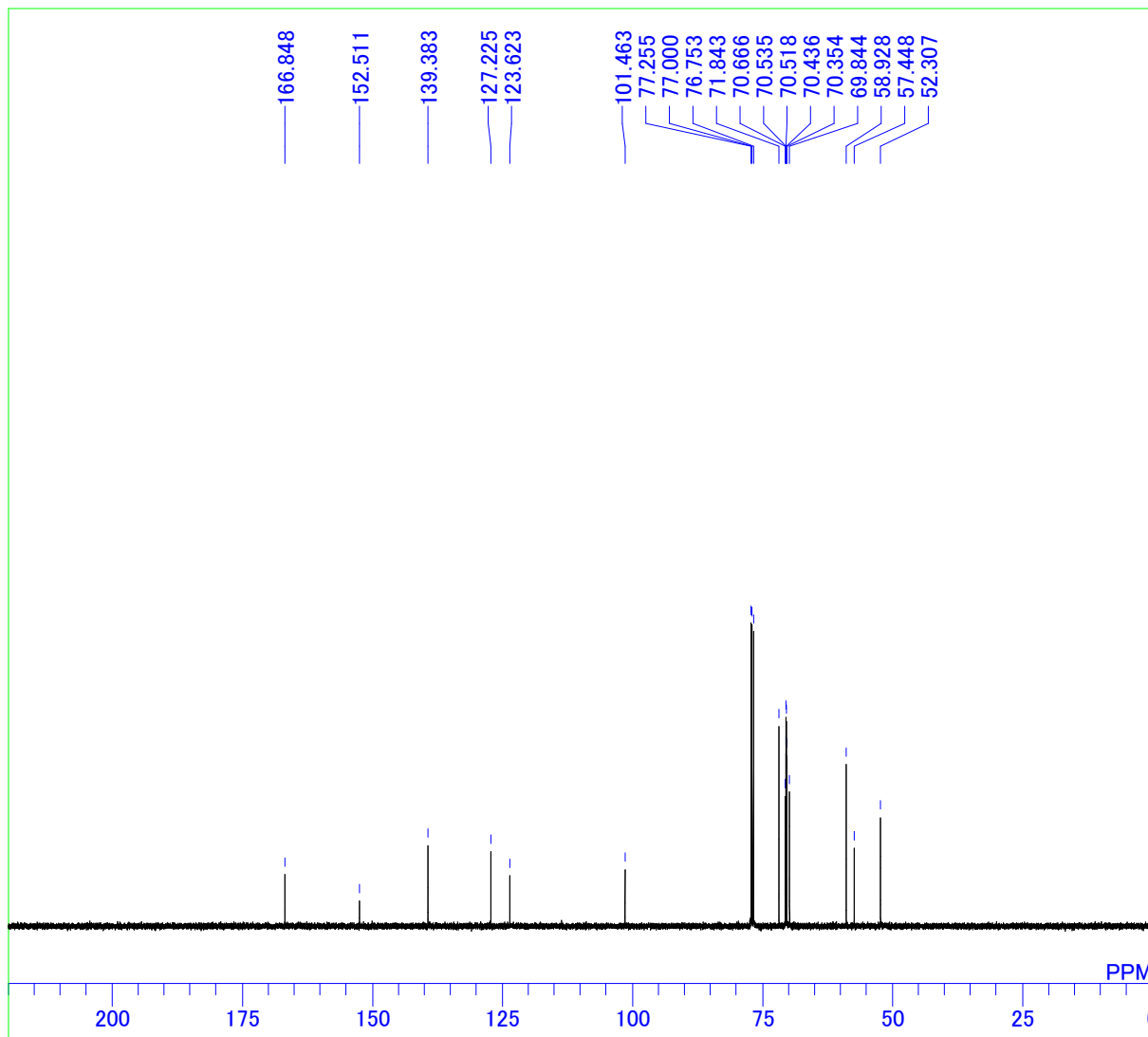
C:\Documents and Settings\ALPHA\1-1-1-1\UozumiG\muto\full data\MOM2(TM6008-04-1H).als



MENUF	non_th5atfTH5ATFG2
OBNUC	1H
OBFRQ	500.00 MHz
OBFIN	162410.00 Hz
PW1	6.40 usec
DEADT	56.80 usec
PREDL	0.20000 msec
INIWT	10.0000 msec
POINT	16384
SAMPO	16384
TIMES	32
DUMMY	1
FREQU	10000.00 Hz
FILTR	5000 Hz
DELAY	40.00 usec
ACQTM	10.0000 sec
PD	12.0000 sec
ADBIT	16
RGAIN	17
BF	0.23 Hz
T1	0.00
T2	0.00
T3	90.00
T4	100.00
EXMOD	SINGL
EXPCM	Single pulse
IRNUC	1H
IRFRQ	500.00 MHz
IRFIN	162410.00 Hz
IRRPW	50 usec
IRATN	511
DFILE	C:\Documents and Settings\ALPHA\1
SHMFL	TH5ATFG2
LKFIN	70186.0 Hz
LKLEV	160
LGAIN	18
LKPHS	212
LKSIG	884
CSPED	16 Hz
FILDC	
FILDF	

¹³C NMR of 2-methoxymethoxy-4,6-bis(2,5,8,11-tetraoxadodecyl)isophthalic acid dimethyl ester (13)

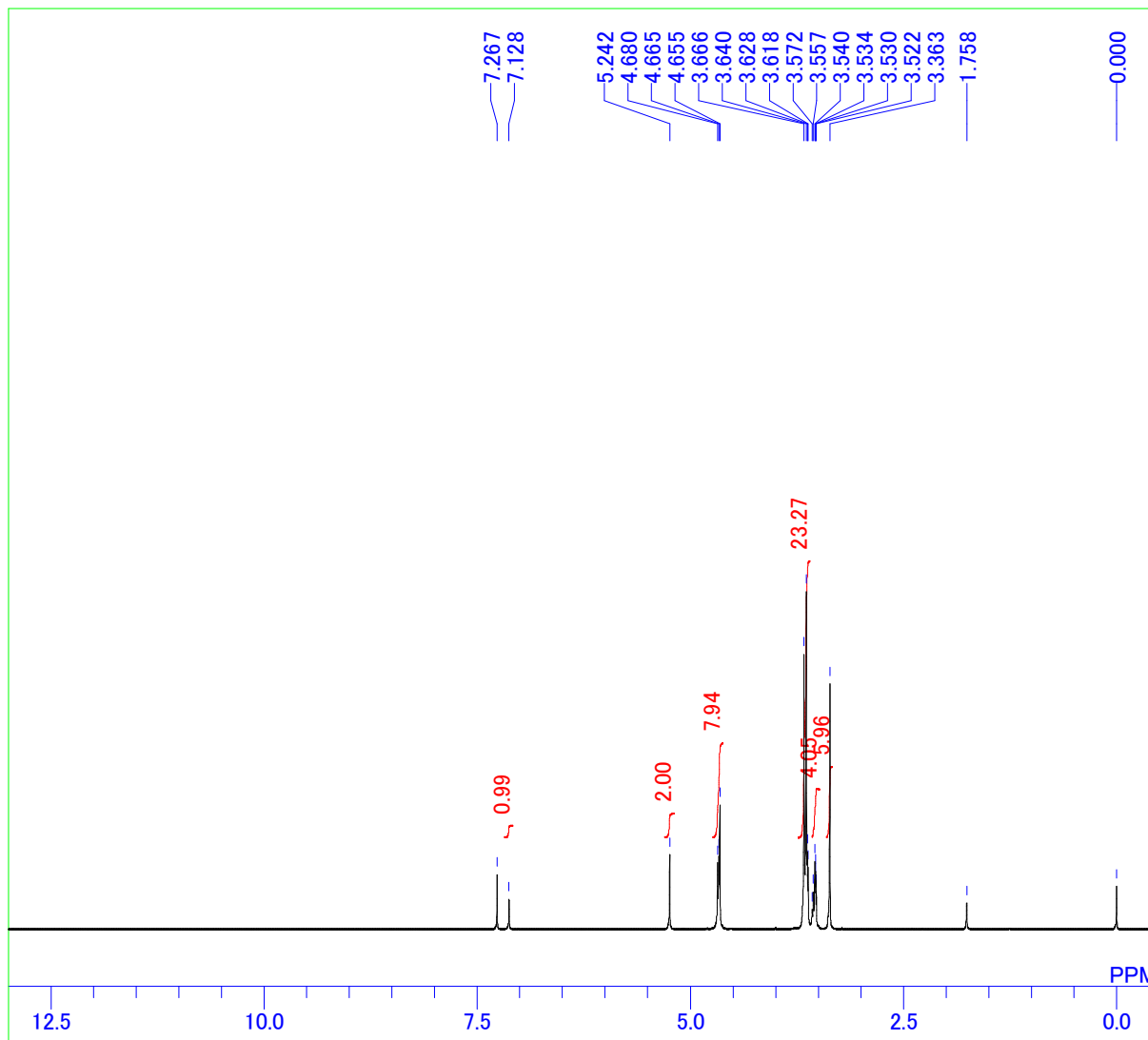
C:\Documents and Settings\ALPHA\11-11-11\UozumiG\muto\full data\MOM2(TM5083-04-13c).als



MENUF bcm_th5atfTH5ATFG2
OBNUC 13C
OBFRQ 125.65 MHz
OBFIN 127958.00 Hz
PW1 5.75 usec
DEADT 10.00 usec
PREDL 0.20000 msec
INIWT 10.0000 msec
POINT 32768
SAMPO 32768
TIMES 1000
DUMMY 1
FREQU 33898.30 Hz
FILTR 16950 Hz
DELAY 11.80 usec
ACQTM 0.9667 sec
PD 1.0000 sec
ADBIT 16
RGAIN 27
BF 0.50 Hz
T1 0.00
T2 0.00
T3 90.00
T4 100.00
EXMOD SINGL
EXPCM Single pulse
IRNUC 1H
IRFRQ 500.00 MHz
IRFIN 162410.00 Hz
IRRPW 50 usec
IRATN 511
DFILE C:\Documents and Settings\ALPHA\11-11-11\UozumiG\muto\full data\MOM2(TM5083-04-13c).als
SHMFL TH5ATFG2
LKFIN 70334.0 Hz
LKLEV 180
LGAIN 23
LKPHS 214
LKSIG 843
CSPED 16 Hz
FILDC
FILDF

¹H NMR of 2,6-dihydroxymethyl-3,5-bis(2,5,8,11-tetraoxadodecyl)phenyl methoxymethyl ether (14)

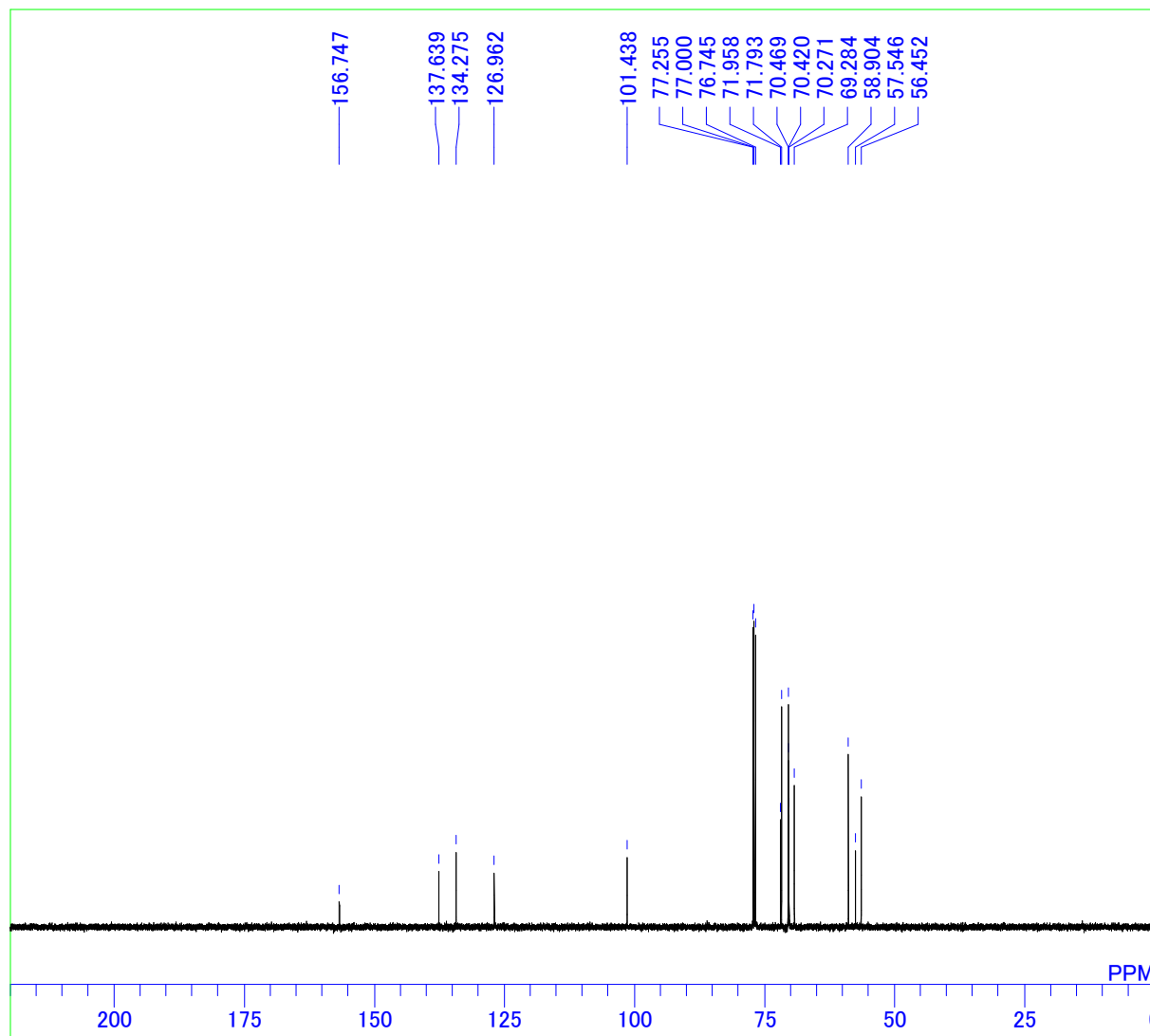
C:\Documents and Settings\ALPHA\11-11-11\UozumiG\muto\full data\Alcohol(TM5084-04-1H).als



MENUF	non_th5atfTH5ATFG2_2
OBNUC	1H
OBFRQ	500.00 MHz
OBFIN	162410.00 Hz
PW1	6.40 usec
DEADT	56.80 usec
PREDL	0.20000 msec
INIWT	10.0000 msec
POINT	16384
SAMPO	16384
TIMES	32
DUMMY	1
FREQU	10000.00 Hz
FILTR	5000 Hz
DELAY	40.00 usec
ACQTM	10.0000 sec
PD	12.0000 sec
ADBIT	16
RGAIN	16
BF	0.50 Hz
T1	0.00
T2	0.00
T3	90.00
T4	100.00
EXMOD	SINGL
EXPCM	Single pulse
IRNUC	1H
IRFRQ	500.00 MHz
IRFIN	162410.00 Hz
IRRPW	50 usec
IRATN	511
DFILE	C:\Documents and Settings\ALPHA\11-11-11\UozumiG\muto\full data\Alcohol(TM5084-04-1H).als
SHMFL	TH5ATFG2_2
LKFIN	70334.0 Hz
LKLEV	180
LGAIN	22
LKPHS	211
LKSIG	624
CSPED	14 Hz
FILDC	
FILDF	

¹³C NMR of 2,6-dihydroxymethyl-3,5-bis(2,5,8,11-tetraoxadodecyl)phenyl methoxymethyl ether (14)

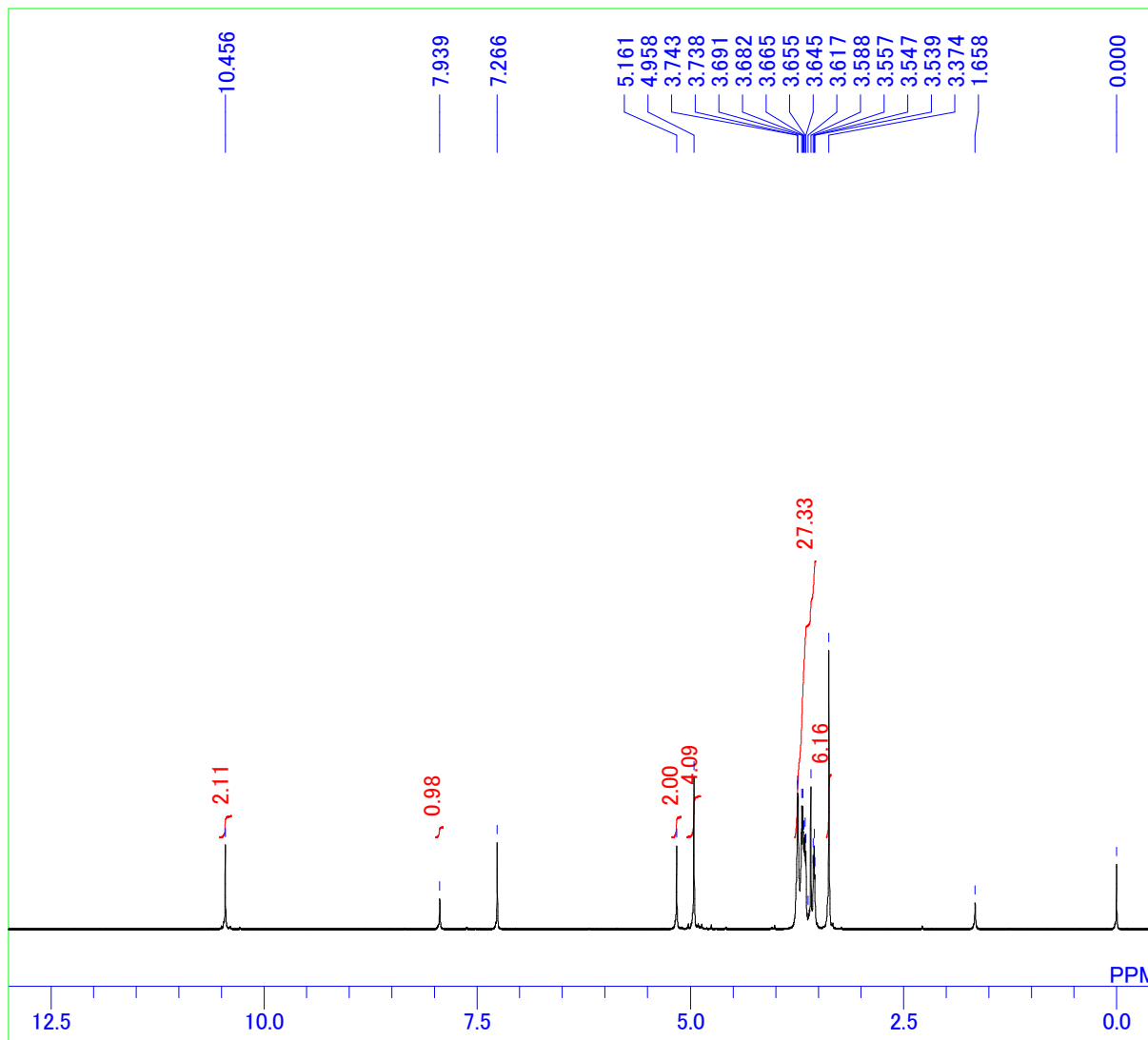
C:\Documents and Settings\ALPHA\11-10-10\UozumiG\muto\TMEXP0500-0599\TM5084-04-13c-02f.als



MENUF bcm_th5atfTH5ATFG2_2
OBNUC 13C
OBFRQ 125.65 MHz
OBFIN 127958.00 Hz
PW1 5.75 usec
DEADT 10.00 usec
PREDL 0.20000 msec
INIWT 10.0000 msec
POINT 32768
SAMPO 32768
TIMES 4000
DUMMY 1
FREQU 33898.30 Hz
FILTR 16950 Hz
DELAY 11.80 usec
ACQTM 0.9667 sec
PD 1.0000 sec
ADBIT 16
RGAIN 25
BF 0.50 Hz
T1 0.00
T2 0.00
T3 90.00
T4 100.00
EXMOD SINGL
EXPCM Single pulse
IRNUC 1H
IRFRQ 500.00 MHz
IRFIN 162410.00 Hz
IRRPW 50 usec
IRATN 511
DFILE C:\Documents and Settings\ALPHA\11-10-10\UozumiG\muto\TMEXP0500-0599\TM5084-04-13c-02f.als
SHMFL TH5ATFG2_2
LKFIN 70334.0 Hz
LKLEV 180
LGAIN 23
LKPHS 211
LKSIG 1127
CSPED 16 Hz
FILDC
FILDF

¹H NMR of 2,6-diformyl-3,5-bis(2,5,8,11-tetraoxadodecyl)phenyl methoxymethyl ether (15)

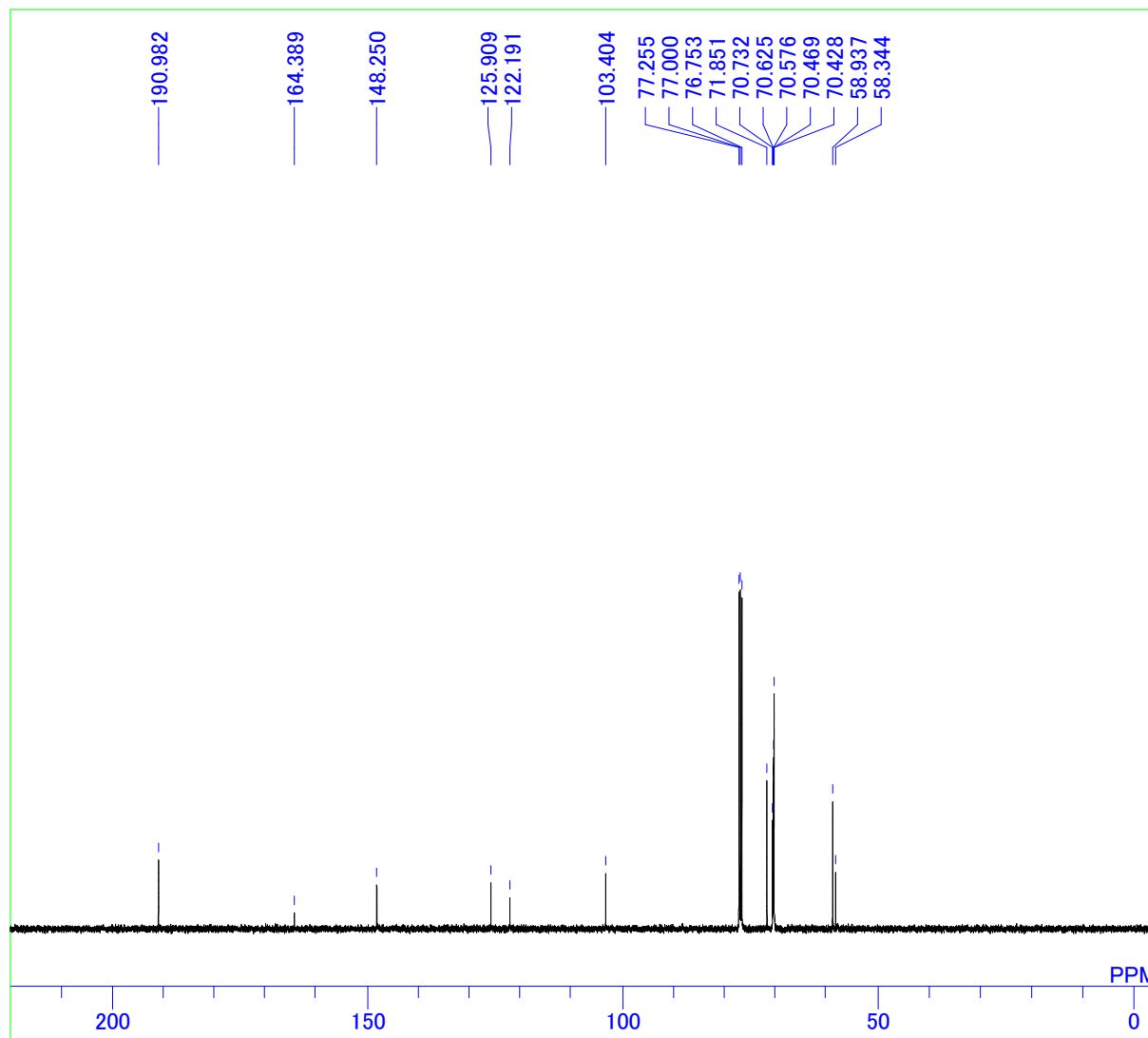
C:\Documents and Settings\ALPHA\11-11-11\UozumiG\muto\full data\Aldehyde1(TM5086-06-1H).als



MENUF	non_th5atfTH5ATFG2_2
OBNUC	1H
OBFRQ	500.00 MHz
OBFIN	162410.00 Hz
PW1	6.40 usec
DEADT	56.80 usec
PREDL	0.20000 msec
INIWT	10.0000 msec
POINT	16384
SAMPO	16384
TIMES	16
DUMMY	1
FREQU	10000.00 Hz
FILTR	5000 Hz
DELAY	40.00 usec
ACQTM	10.0000 sec
PD	12.0000 sec
ADBIT	16
RGAIN	19
BF	1.72 Hz
T1	0.00
T2	0.00
T3	90.00
T4	100.00
EXMOD	SINGL
EXPCM	Single pulse
IRNUC	1H
IRFRQ	500.00 MHz
IRFIN	162410.00 Hz
IRRPW	50 usec
IRATN	511
DFILE	C:\Documents and Settings\ALPHA\11-11-11\UozumiG\muto\full data\Aldehyde1(TM5086-06-1H).als
SHMFL	TH5ATFG2_2
LKFIN	70334.0 Hz
LKLEV	180
LGAIN	23
LKPHS	211
LKSIG	1055
CSPED	15 Hz
FILDC	
FILDF	

¹³C NMR of 2,6-diformyl-3,5-bis(2,5,8,11-tetraoxadodecyl)phenyl methoxymethyl ether (15)

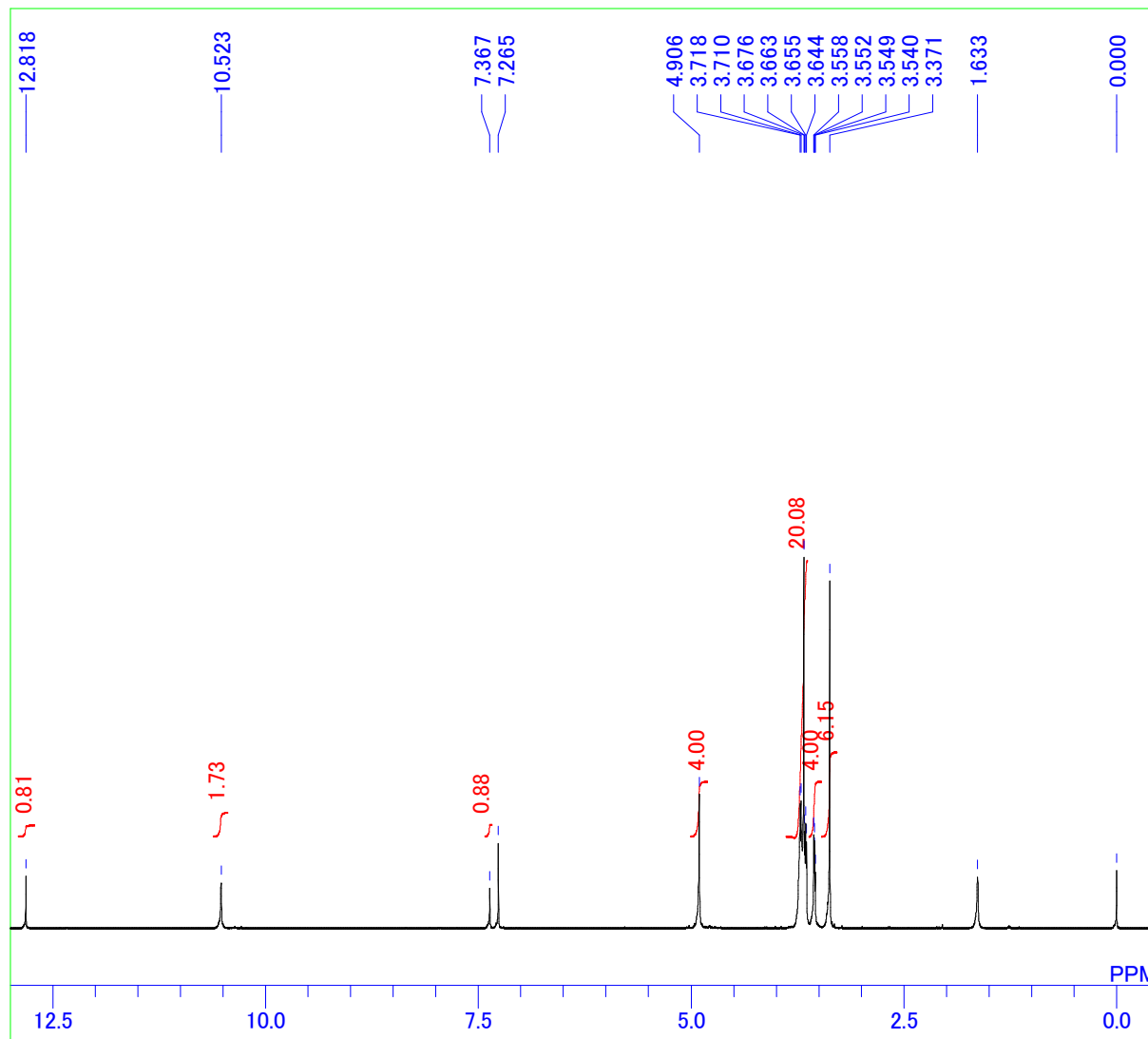
C:\Documents and Settings\ALPHA\11-11-11\UozumiG\muto\full data\Aldehyde1(TM5086-06-13C).als



MENUF	bcm_th5atfTH5ATFG2_2
OBNUC	13C
OBFRQ	125.65 MHz
OBFIN	127958.00 Hz
PW1	5.75 usec
DEADT	10.00 usec
PREDL	0.20000 msec
INIWT	10.0000 msec
POINT	32768
SAMPO	32768
TIMES	1000
DUMMY	1
FREQU	33898.30 Hz
FILTR	16950 Hz
DELAY	11.80 usec
ACQTM	0.9667 sec
PD	1.0000 sec
ADBIT	16
RGAIN	27
BF	1.72 Hz
T1	0.00
T2	0.00
T3	90.00
T4	100.00
EXMOD	SINGL
EXPCM	Single pulse
IRNUC	1H
IRFRQ	500.00 MHz
IRFIN	162410.00 Hz
IRRPW	50 usec
IRATN	511
DFILE	C:\Documents and Settings\ALPHA\11-11-11\UozumiG\muto\full data\Aldehyde1(TM5086-06-13C).als
SHMFL	TH5ATFG2_2
LKFIN	70334.0 Hz
LKLEV	180
LGAIN	23
LKPHS	211
LKSIG	920
CSPED	16 Hz
FILDC	
FILDF	

¹H NMR of 2,6-diformyl-3,5-bis(2,5,8,11-tetraoxadodecyl)phenol (16)

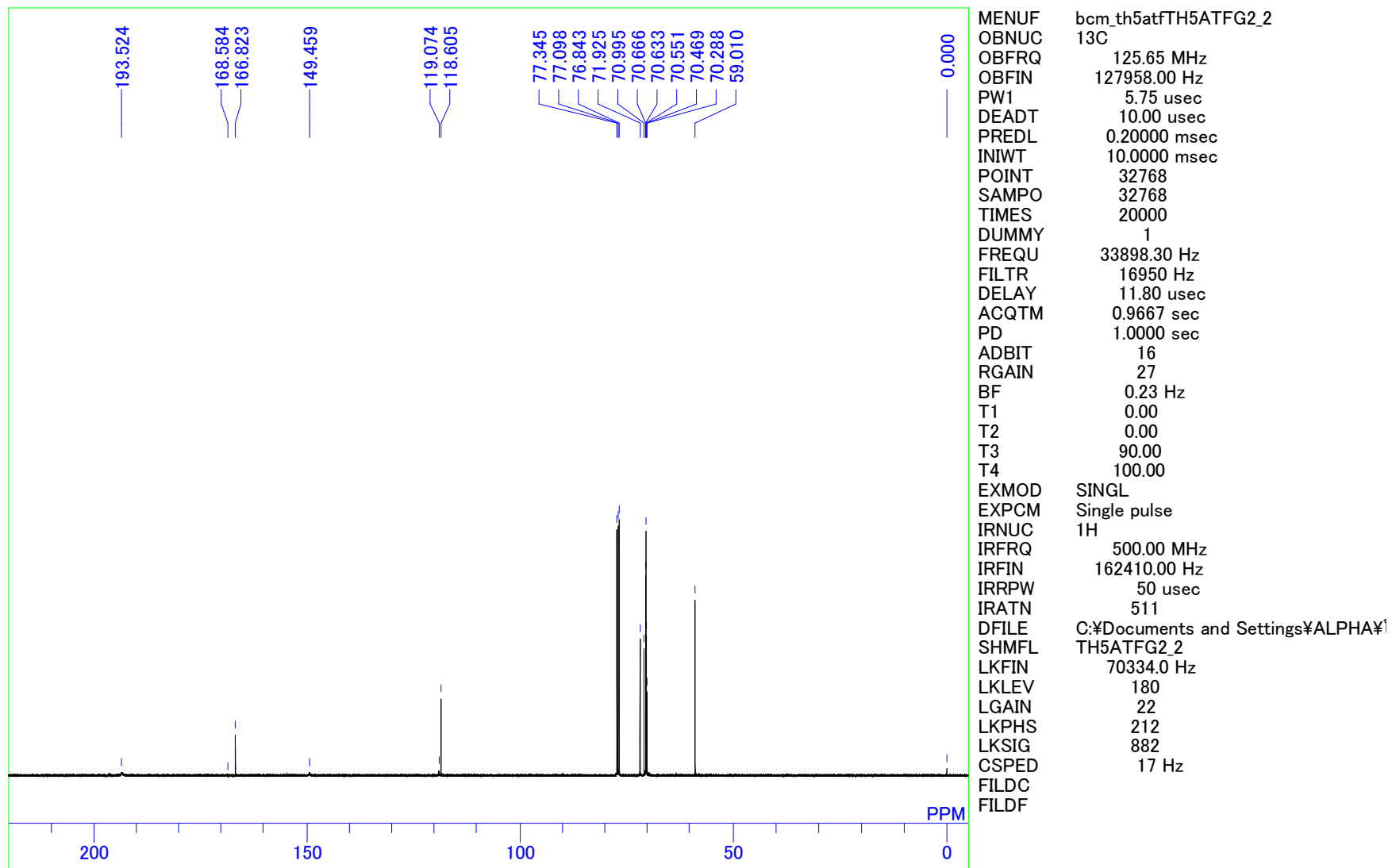
C:\Documents and Settings\ALPHA\1-1-1-1\UozumiG\muto\full data\Aldehyde2(TMExp0299-column03-1H).als



MENUF non_th5atfTH5ATFG2_2
OBNUC 1H
OBFRQ 500.00 MHz
OBFIN 162410.00 Hz
PW1 6.40 usec
DEADT 56.80 usec
PREDL 0.20000 msec
INIWT 10.0000 msec
POINT 16384
SAMPO 16384
TIMES 16
DUMMY 1
FREQU 10000.00 Hz
FILTR 5000 Hz
DELAY 40.00 usec
ACQTM 1.6384 sec
PD 2.0000 sec
ADBIT 16
RGAIN 21
BF 0.80 Hz
T1 0.00
T2 0.00
T3 90.00
T4 100.00
EXMOD SINGL
EXPCM Single pulse
IRNUC 1H
IRFRQ 500.00 MHz
IRFIN 162410.00 Hz
IRRPW 50 usec
IRATN 511
DFILE C:\Documents and Settings\ALPHA\1
SHMFL TH5ATFG2_2
LKFIN 70334.0 Hz
LKLEV 180
LGAIN 20
LKPHS 214
LKSIG 880
CSPED 13 Hz
FILDC
FILDF

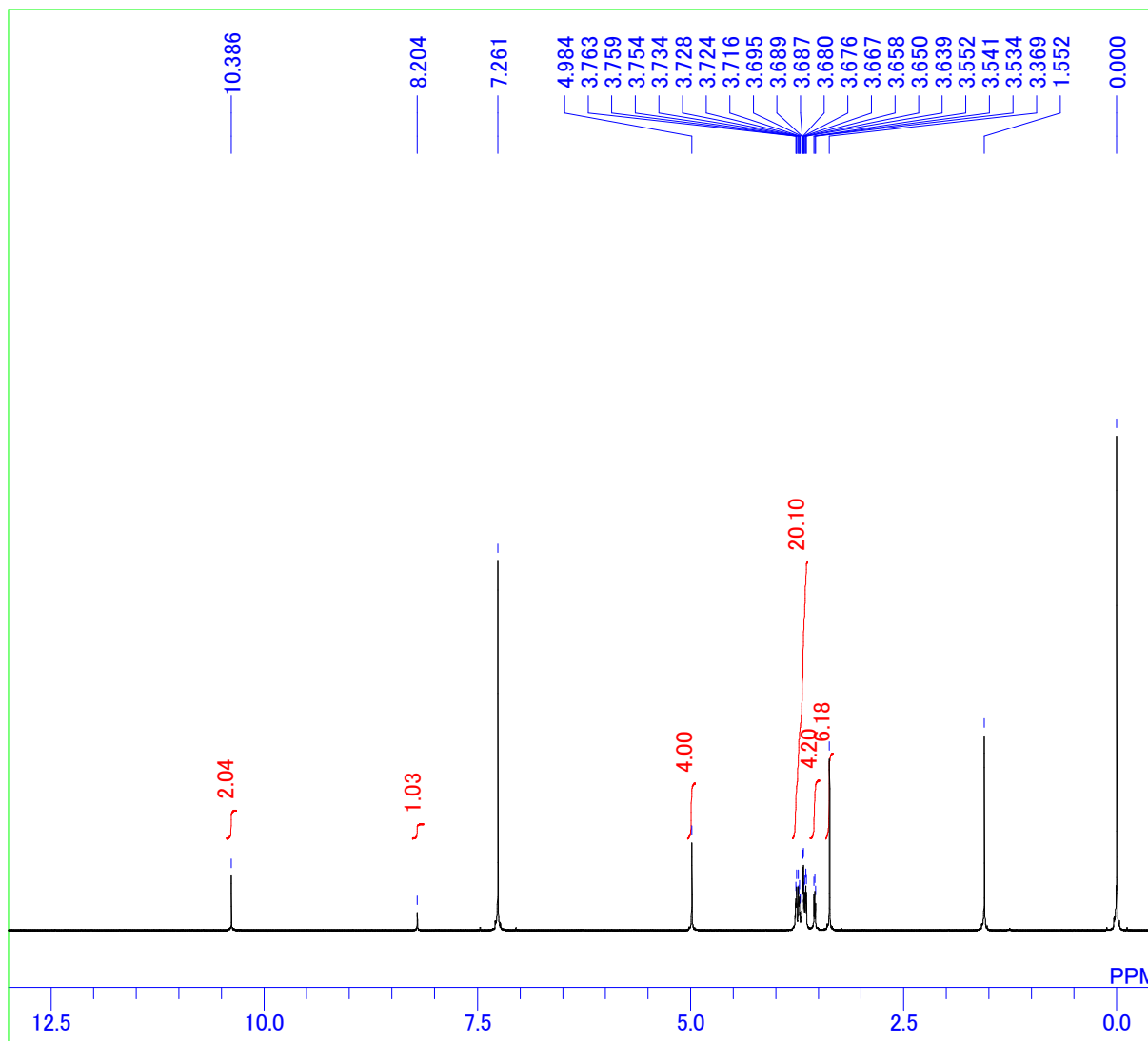
¹³C NMR of 2,6-diformyl-3,5-bis(2,5,8,11-tetraoxadodecyl)phenol (16)

C:\Documents and Settings\ALPHA\11-11-11\UozumiG\muto\TMEXP0500-0599\TM5087-05-13c.als



¹H NMR of 2,6-diformyl-3,5-bis(2,5,8,11-tetraoxadodecyl)phenyl trifluoromethanesulfonate (17)

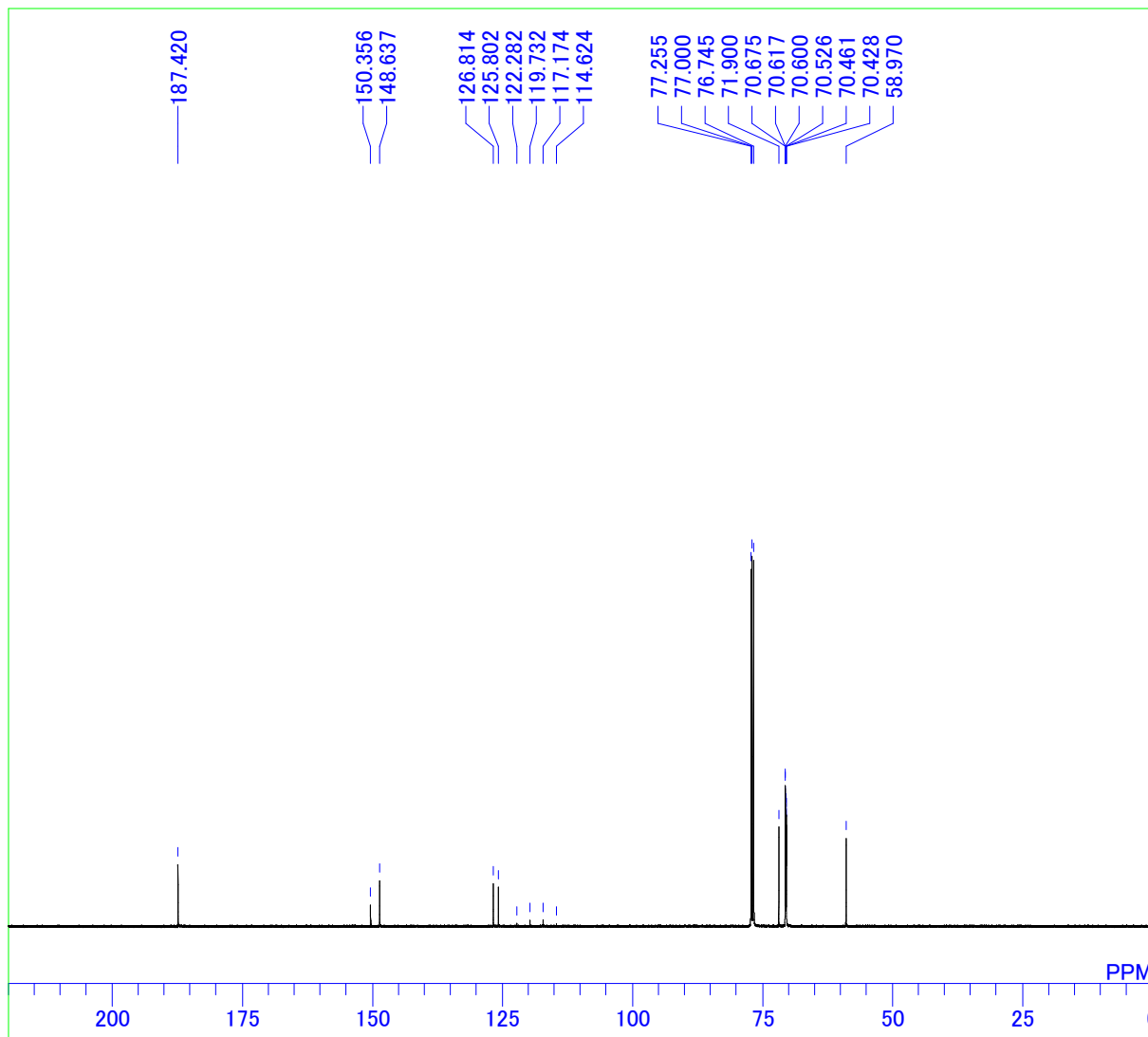
C:\Documents and Settings\ALPHA\11-11-11\UozumiG\muto\full data\Triflate(TMExp0491-02-1H).als



MENUF non_th5atfTH5ATFG2
OBNUC 1H
OBFRQ 500.00 MHz
OBFIN 162410.00 Hz
PW1 6.40 usec
DEADT 56.80 usec
PREDL 0.20000 msec
INIWT 10.0000 msec
POINT 16384
SAMPO 16384
TIMES 32
DUMMY 1
FREQU 10000.00 Hz
FILTR 5000 Hz
DELAY 40.00 usec
ACQTM 10.0000 sec
PD 12.0000 sec
ADBIT 16
RGAIN 24
BF 0.00 Hz
T1 0.00
T2 0.00
T3 90.00
T4 100.00
EXMOD SINGL
EXPCM Single pulse
IRNUC 1H
IRFRQ 500.00 MHz
IRFIN 162410.00 Hz
IRRPW 50 usec
IRATN 511
DFILE C:\Documents and Settings\ALPHA\11-11-11\UozumiG\muto\full data\Triflate(TMExp0491-02-1H).als
SHMFL TH5ATFG2
LKFIN 70334.0 Hz
LKLEV 180
LGAIN 23
LKPHS 214
LKSIG 900
CSPED 16 Hz
FILDC
FILDF

¹³C NMR 2,6-diformyl-3,5-bis(2,5,8,11-tetraoxadodecyl)phenyl trifluoromethanesulfonate (17)

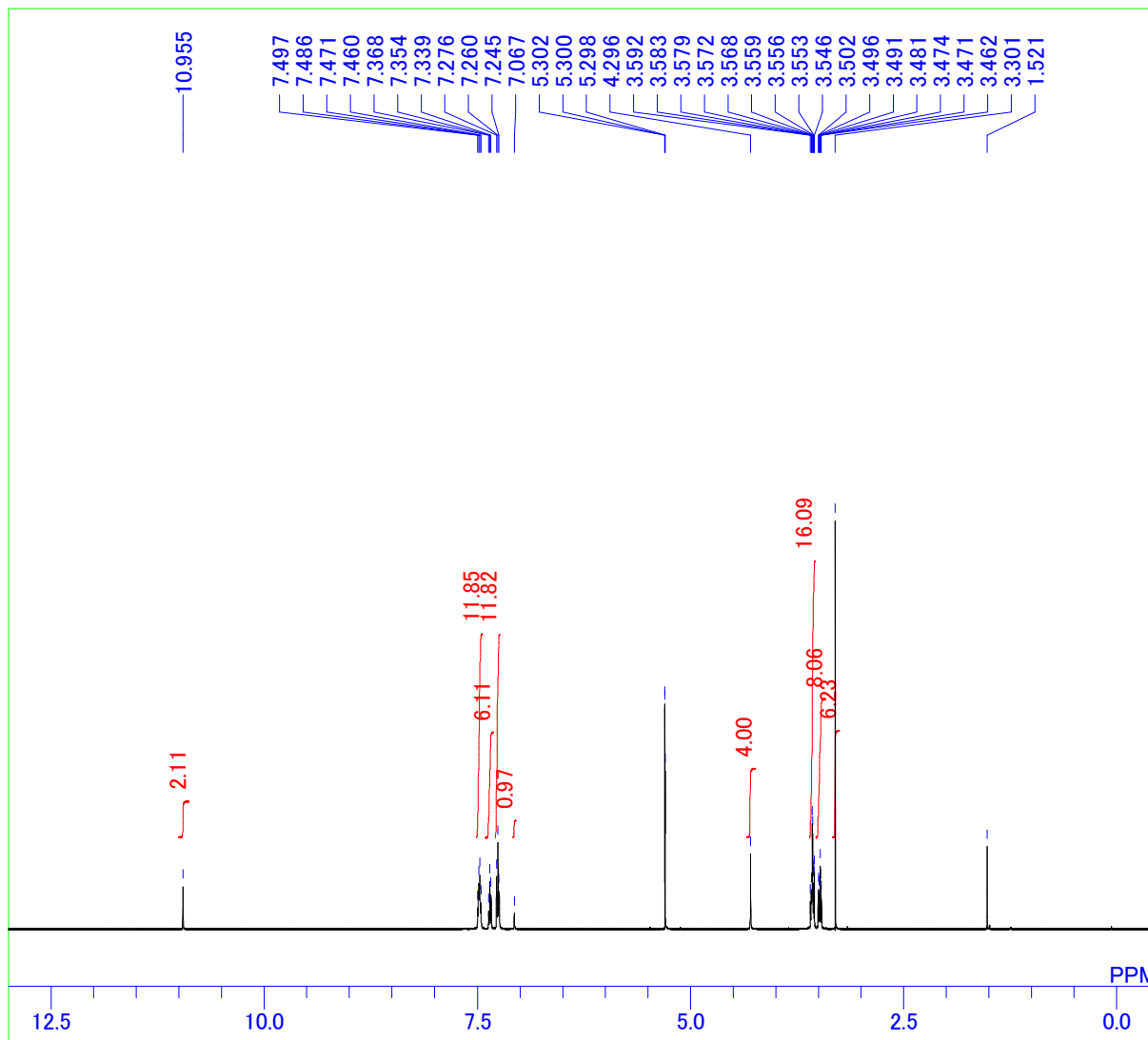
C:\Documents and Settings\ALPHA\1-1-1-1\UozumiG\muto\full data\Triflate(TM6033-03-13C).als



MENUF	bcm_th5atfTH5ATFG2_2
OBNUC	13C
OBFRQ	125.65 MHz
OBFIN	127958.00 Hz
PW1	5.75 usec
DEADT	10.00 usec
PREDL	0.20000 msec
INIWT	10.0000 msec
POINT	32768
SAMPO	32768
TIMES	30000
DUMMY	1
FREQU	33898.30 Hz
FILTR	16950 Hz
DELAY	11.80 usec
ACQTM	0.9667 sec
PD	1.0000 sec
ADBIT	16
RGAIN	27
BF	1.00 Hz
T1	0.00
T2	0.00
T3	90.00
T4	100.00
EXMOD	SINGL
EXPCM	Single pulse
IRNUC	1H
IRFRQ	500.00 MHz
IRFIN	162410.00 Hz
IRRPW	50 usec
IRATN	511
DFILE	C:\Documents and Settings\ALPHA\1
SHMFL	TH5ATFG2_2
LKFIN	70334.0 Hz
LKLEV	180
LGAIN	22
LKPHS	212
LKSIG	630
CSPED	16 Hz
FILDC	
FILDF	

¹H NMR of *trans*-[2,6-diformyl-3,5-bis(2,5,8,11-tetraoxadodecyl)phenyl]chloro bis(triphenylphosphine)palladium (6)

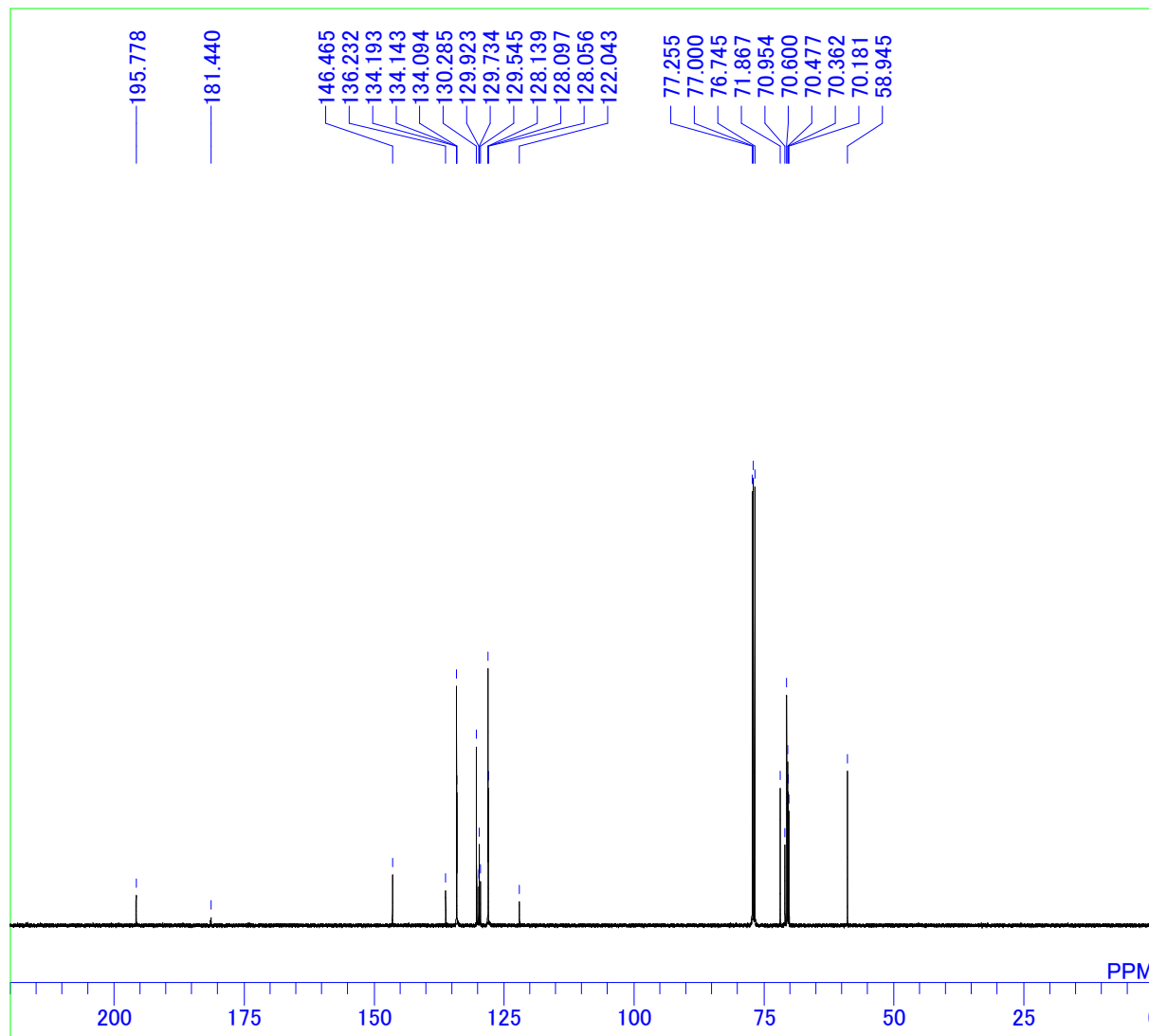
C:\Documents and Settings\ALPHA\1-1-1-1\UozumiG\muto\full data\Pd-complex(TM6009-06-1H).als



MENUF	non_th5atfTH5ATFG2_2
OBNUC	1H
OBFRQ	500.00 MHz
OBFIN	162410.00 Hz
PW1	6.40 usec
DEADT	56.80 usec
PREDL	0.20000 msec
INIWT	10.0000 msec
POINT	16384
SAMPO	16384
TIMES	16
DUMMY	1
FREQU	10000.00 Hz
FILTR	5000 Hz
DELAY	40.00 usec
ACQTM	5.0000 sec
PD	6.0000 sec
ADBIT	16
RGAIN	18
BF	0.03 Hz
T1	0.00
T2	0.00
T3	90.00
T4	100.00
EXMOD	SINGL
EXPCM	Single pulse
IRNUC	1H
IRFRQ	500.00 MHz
IRFIN	162410.00 Hz
IRRPW	50 usec
IRATN	511
DFILE	C:\Documents and Settings\ALPHA\1
SHMFL	TH5ATFG2_2
LKFIN	70186.0 Hz
LKLEV	160
LGAIN	18
LKPHS	212
LKSIG	907
CSPED	17 Hz
FILDC	
FILDF	

¹³C NMR of *trans*-[2,6-diformyl-3,5-bis(2,5,8,11-tetraoxadodecyl)phenyl]chloro bis(triphenylphosphine)palladium (6)

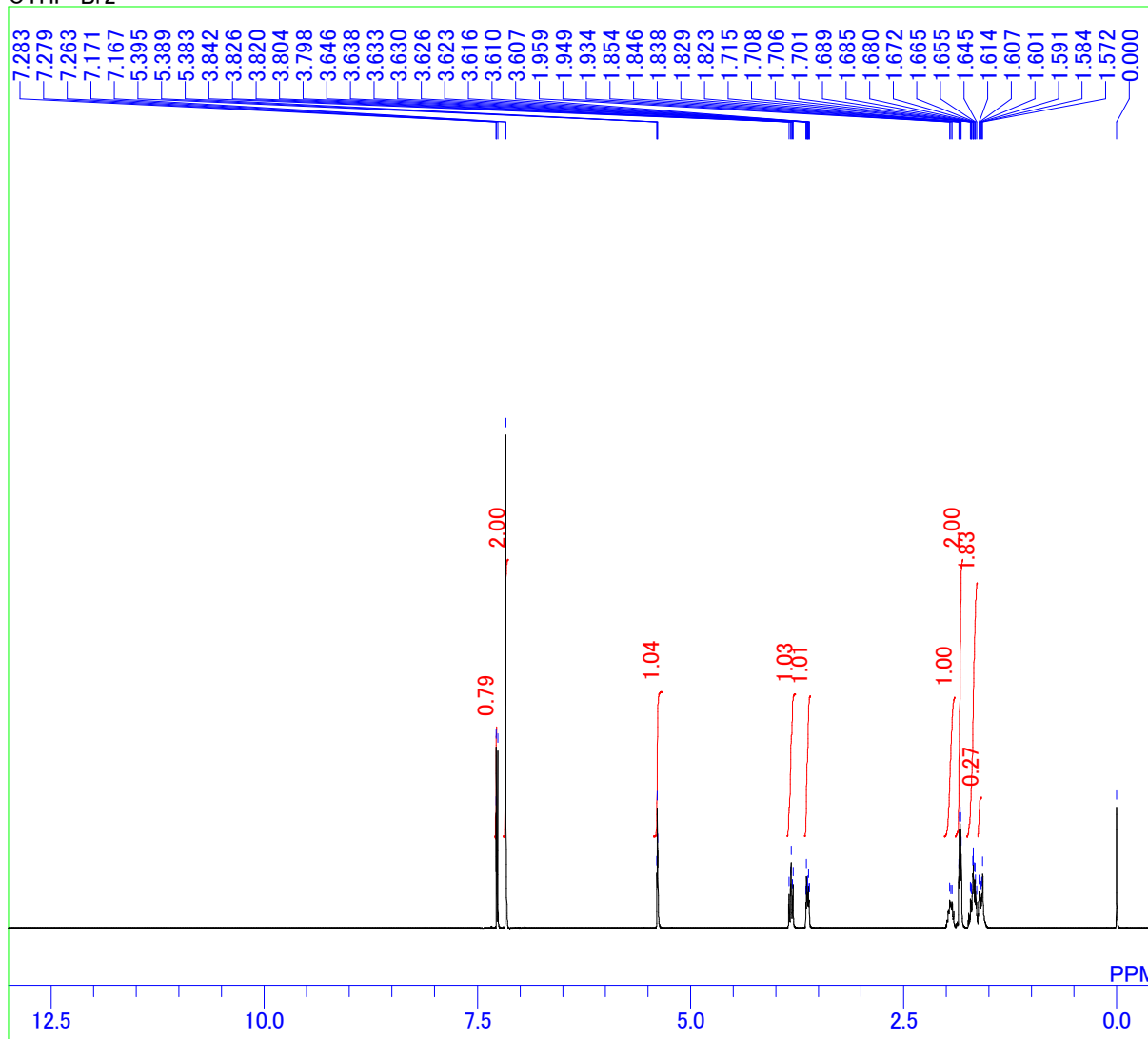
C:\Documents and Settings\ALPHA\11-11-11\UozumiG\muto\full data\Pd-complex(TM6009-13cf-5).als



MENUF bcm_th5atfTH5ATFG2_2
OBNUC 13C
OBFRQ 125.65 MHz
OBFIN 127958.00 Hz
PW1 5.75 usec
DEADT 10.00 usec
PREDL 0.20000 msec
INIWT 10.0000 msec
POINT 32768
SAMPO 32768
TIMES 30000
DUMMY 1
FREQU 33898.30 Hz
FILTR 16950 Hz
DELAY 11.80 usec
ACQTM 0.9667 sec
PD 1.0000 sec
ADBIT 16
RGAIN 27
BF 1.00 Hz
T1 0.00
T2 0.00
T3 90.00
T4 100.00
EXMOD SINGL
EXPCM Single pulse
IRNUC 1H
IRFRQ 500.00 MHz
IRFIN 162410.00 Hz
IRRPW 50 usec
IRATN 511
DFILE C:\Documents and Settings\ALPHA\11-11-11\UozumiG\muto\full data\Pd-complex(TM6009-13cf-5).als
SHMFL TH5ATFG2_2
LKFIN 70334.0 Hz
LKLEV 180
LGAIN 21
LKPHS 212
LKSIG 664
CSPED 16 Hz
FILDC
FILDF

¹H NMR of 3,5-dibromo-(tetrahydro-2H-pyran-2-yloxy)benzene (19)

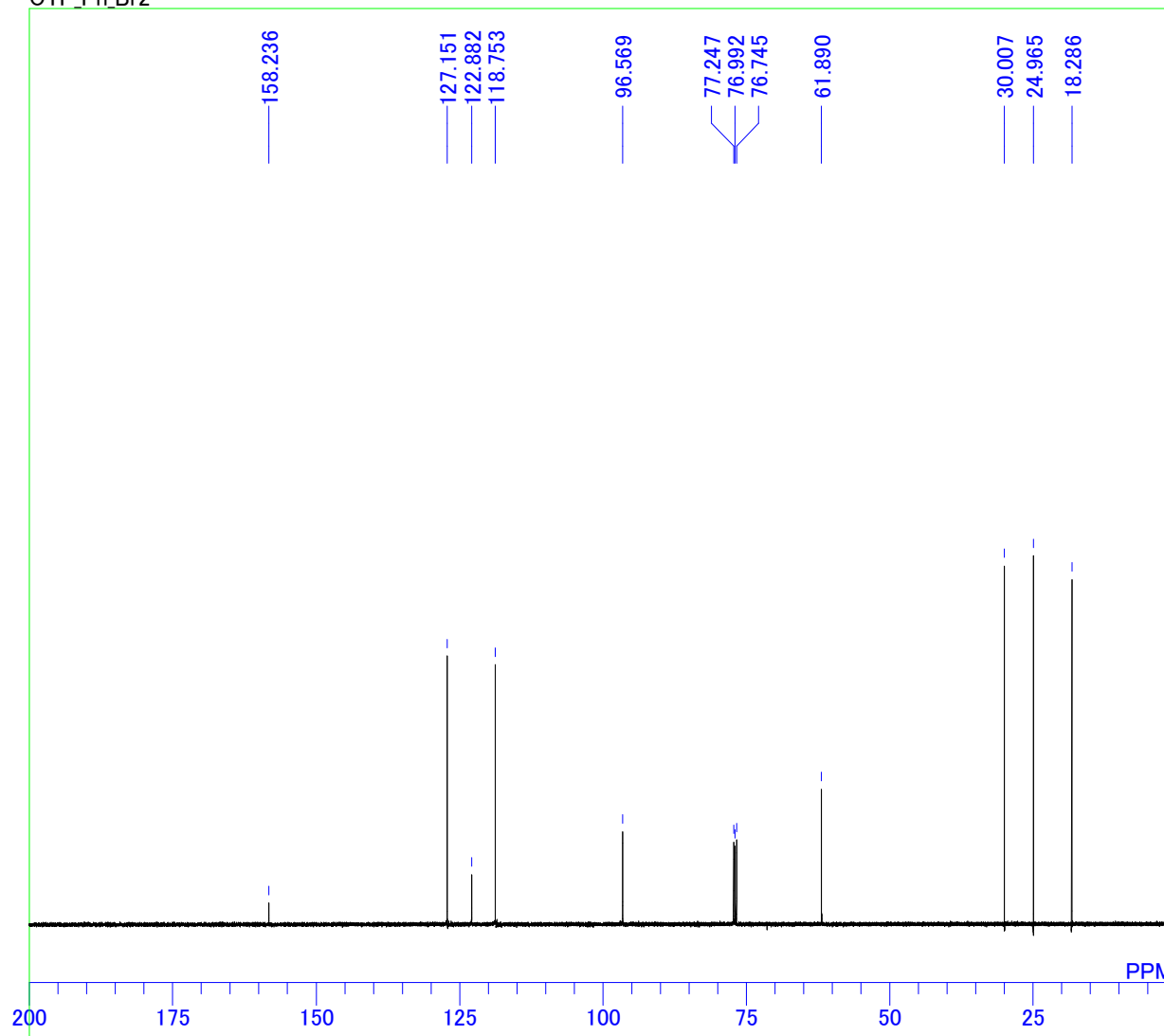
C:\Documents and Settings\ALPHA\1-1-1-1\UozumiG\Hamasaka\OTHPBr2-1H.als
OTHP-Br2



MENUF non_th5atfTH5ATFG2_0OTHP-Br2
OBNUC 1H
OBFRQ 500.00 MHz
OBFIN 162410.00 Hz
PW1 6.40 usec
DEADT 56.80 usec
PREDL 0.20000 msec
INIWT 10.0000 msec
POINT 16384
SAMPO 16384
TIMES 32
DUMMY 1
FREQU 10000.00 Hz
FILTR 5000 Hz
DELAY 40.00 usec
ACQTM 10.0000 sec
PD 12.0000 sec
ADBIT 16
RGAIN 18
BF 0.00 Hz
T1 0.00
T2 0.00
T3 90.00
T4 100.00
EXMOD SINGL
EXPCM Single pulse
IRNUC 1H
IRFRQ 500.00 MHz
IRFIN 162410.00 Hz
IRRPW 50 usec
IRATN 511
DFILE C:\Documents and Settings\ALPHA\1
SHMFL TH5ATFG2_0OTHP-Br2
LKFIN 70334.0 Hz
LKLEV 180
LGAIN 23
LKPHS 201
LKSIG 1022
CSPED 13 Hz
FILDC
FILDF

¹³C NMR of 3,5-dibromo-(tetrahydro-2H-pyran-2-yloxy)benzene (19)

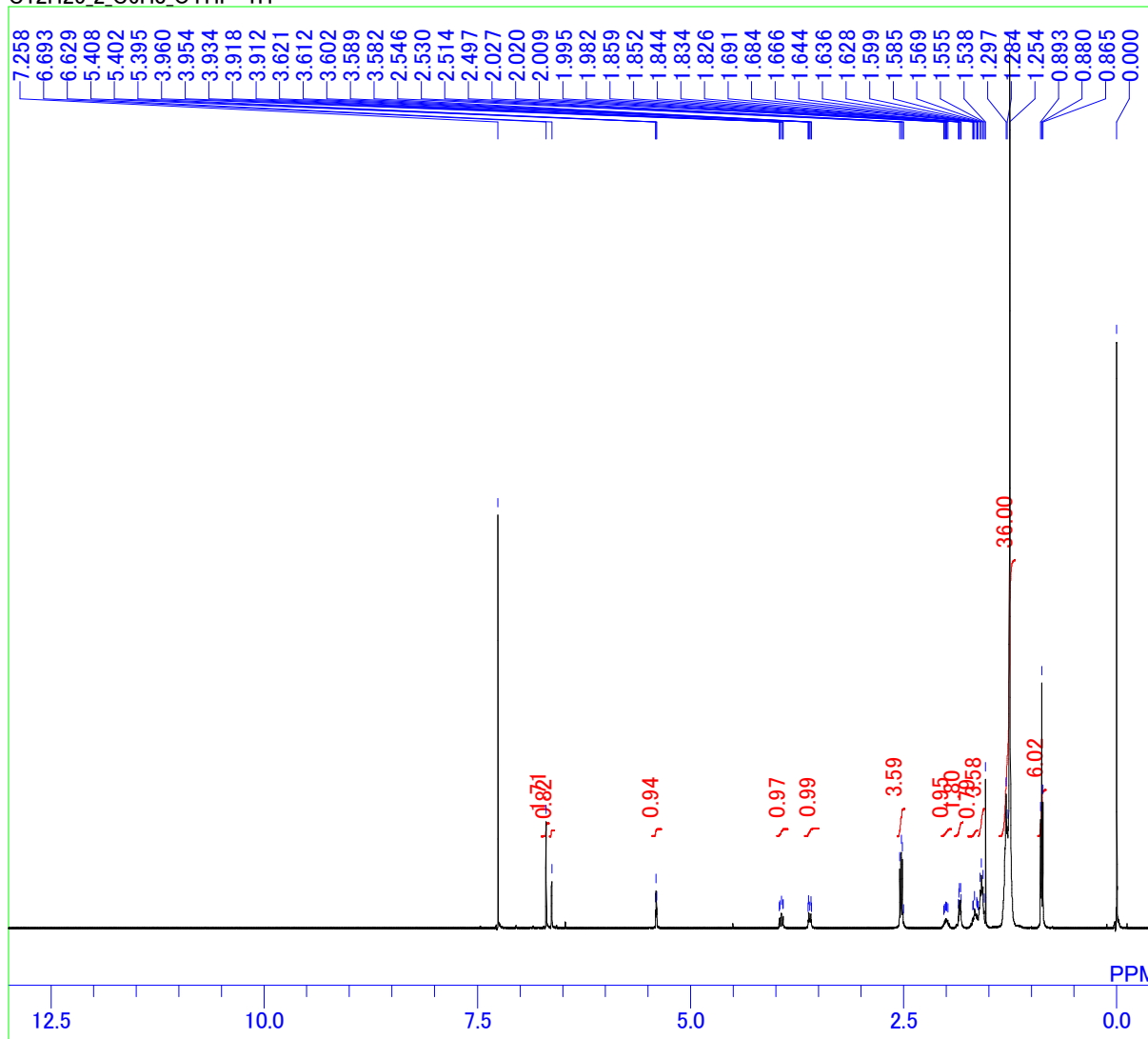
C:\Documents and Settings\ALPHA\11-11-11\UozumiG\Hamasaka\OTHPBr2-13C.als
OTP_Ph.Br2



MENUF bcm_th5atfTH5ATFG2_0OTP_Ph.Br2
OBNUC 13C
OBFRQ 125.65 MHz
OBFIN 127958.00 Hz
PW1 5.75 usec
DEADT 10.00 usec
PREDL 0.20000 msec
INIWT 10.0000 msec
POINT 32768
SAMPO 32768
TIMES 2048
DUMMY 1
FREQU 33898.30 Hz
FILTR 16950 Hz
DELAY 11.80 usec
ACQTM 0.9667 sec
PD 1.0000 sec
ADBIT 16
RGAIN 27
BF 0.00 Hz
T1 0.00
T2 0.00
T3 90.00
T4 100.00
EXMOD SINGL
EXPCM Single pulse
IRNUC 1H
IRFRQ 500.00 MHz
IRFIN 162410.00 Hz
IRRPW 50 usec
IRATN 511
DFILE C:\Documents and Settings\ALPHA\11-11-11\UozumiG\Hamasaka\OTHPBr2-13C.als
SHMFL TH5ATFG2_0OTP_Ph.Br2
LKFIN 70334.0 Hz
LKLEV 180
LGAIN 21
LKPHS 201
LKSIG 710
CSPED 14 Hz
FILDC
FILDF

¹H NMR of 3,5-didodecyl(tetrahydro-2H-pyran-2-yloxy)benzene (20)

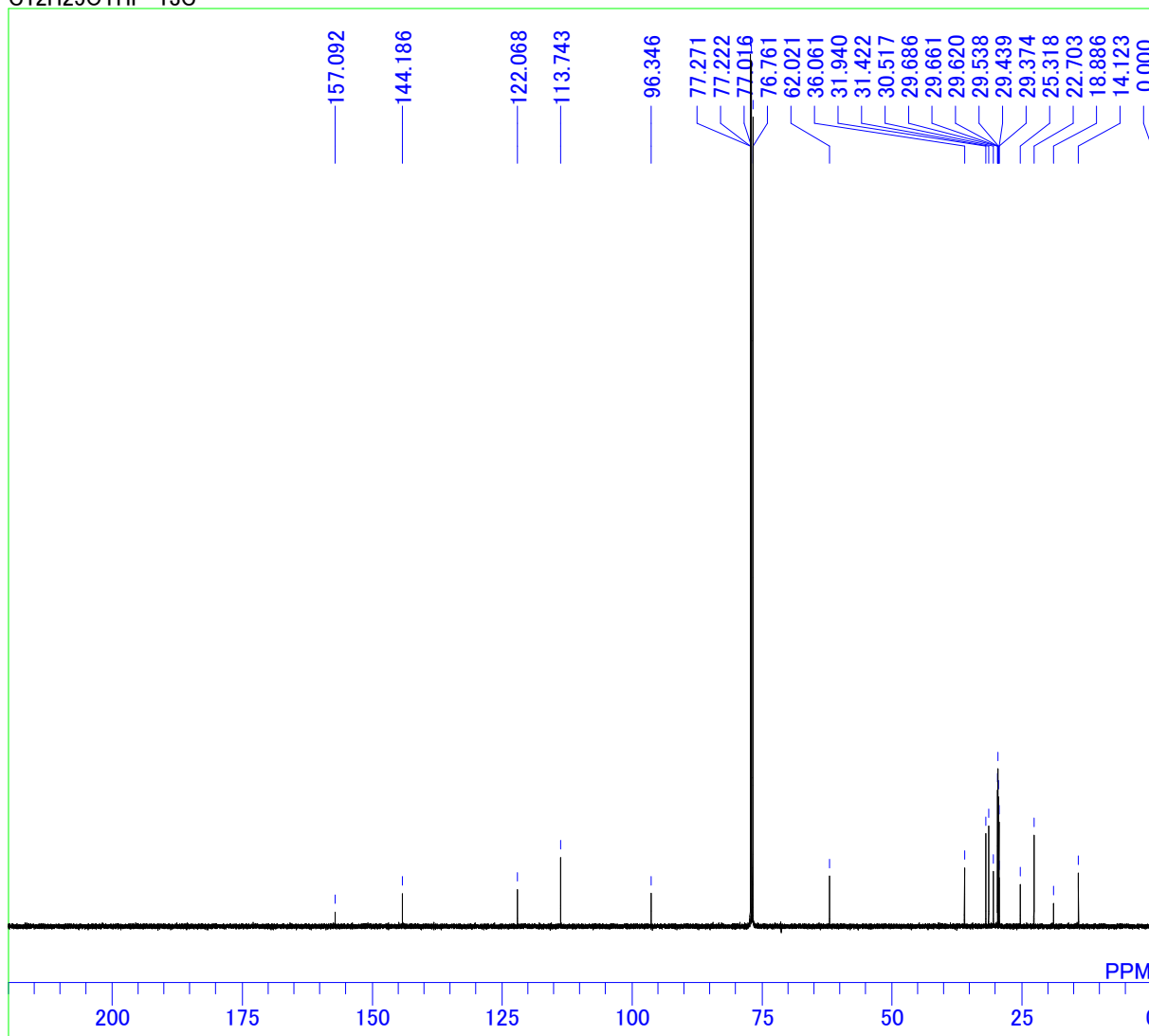
C:\Documents and Settings\ALPHA\11-11-11\UozumiG\Hamasaka\data\C12H25_2_C6H3_OTHP-1H-NMR.als
C12H25_2_C6H3_OTHP-1H



MENUF	non_th5atTH5ATFG2
OBNUC	1H
OBFRQ	500.00 MHz
OBFIN	162410.00 Hz
PW1	6.40 usec
DEADT	56.80 usec
PREDL	0.20000 msec
INIWT	10.0000 msec
POINT	16384
SAMPO	16384
TIMES	16
DUMMY	1
FREQU	10000.00 Hz
FILTR	5000 Hz
DELAY	40.00 usec
ACQTM	10.0000 sec
PD	12.0000 sec
ADBIT	16
RGAIN	20
BF	0.00 Hz
T1	0.00
T2	0.00
T3	90.00
T4	100.00
EXMOD	SINGL
EXPCM	Single pulse
IRNUC	1H
IRFRQ	500.00 MHz
IRFIN	162410.00 Hz
IRRPW	50 usec
IRATN	511
DFILE	C:\Documents and Settings\ALPHA\11-11-11\UozumiG\Hamasaka\data\TH5ATFG2
SHMFL	TH5ATFG2
LKFIN	70334.0 Hz
LKLEV	180
LGAIN	22
LKPHS	214
LKSIG	913
CSPED	16 Hz
FILDC	
FILDF	

¹³C NMR of 3,5-didodecyl(tetrahydro-2H-pyran-2-yloxy)benzene (20)

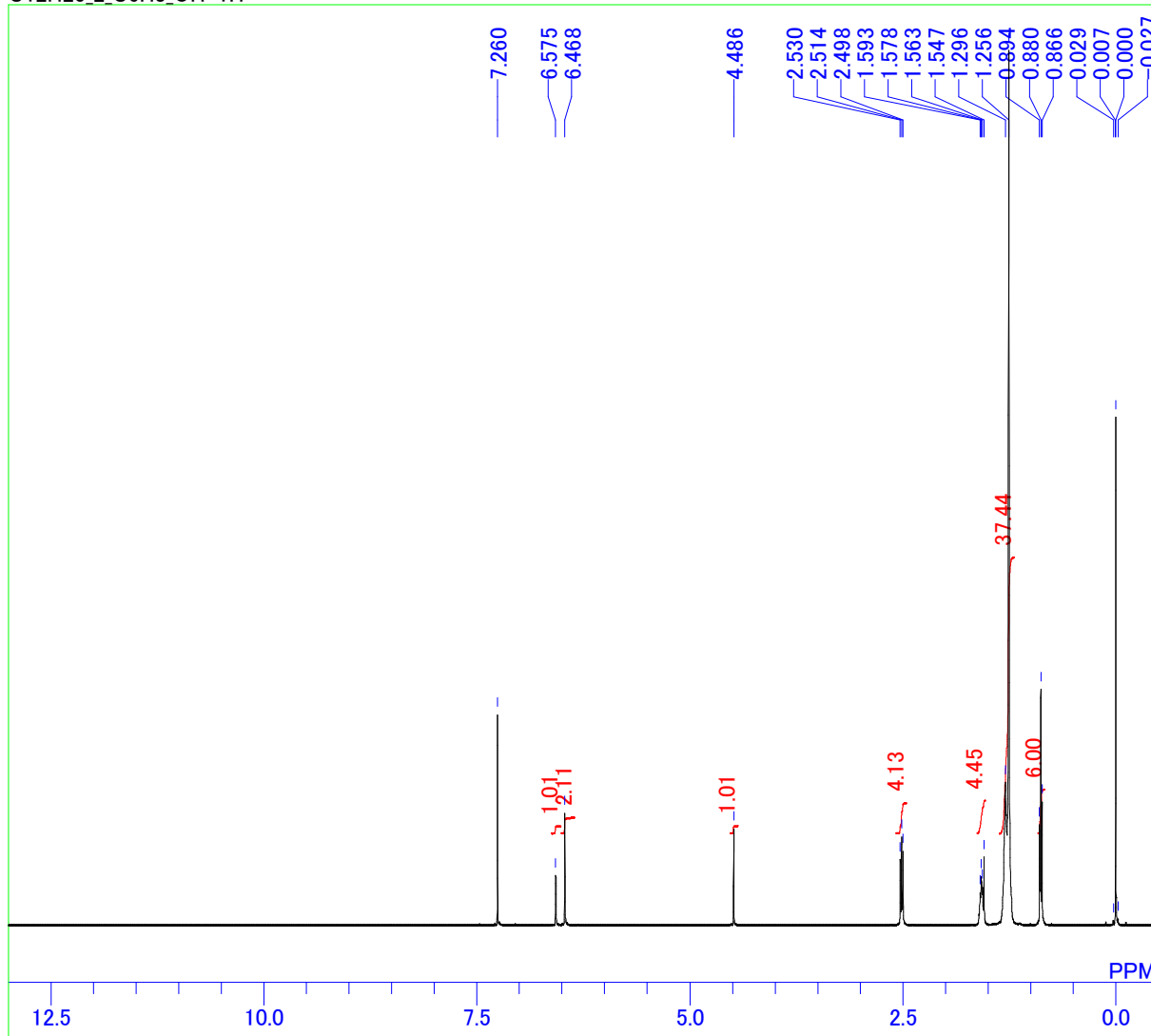
C:\Documents and Settings\ALPHA\11-11-11\UozumiG\Hamasaka\OTHP_Ph_C12H25_2-13C.als
C12H25OTHP-13C



MENUF bcm_th5atfTH5ATFG2
OBNUC 13C
OBFRQ 125.65 MHz
OBFIN 127958.00 Hz
PW1 5.75 usec
DEADT 10.00 usec
PREDL 0.20000 msec
INIWT 10.0000 msec
POINT 32768
SAMPO 32768
TIMES 20000
DUMMY 1
FREQU 33898.30 Hz
FILTR 16950 Hz
DELAY 11.80 usec
ACQTM 0.9667 sec
PD 1.0000 sec
ADBIT 16
RGAIN 26
BF 0.00 Hz
T1 0.00
T2 0.00
T3 90.00
T4 100.00
EXMOD SINGL
EXPCM Single pulse
IRNUC 1H
IRFRQ 500.00 MHz
IRFIN 162410.00 Hz
IRRPW 50 usec
IRATN 511
DFILE C:\Documents and Settings\ALPHA\11-11-11\UozumiG\Hamasaka\OTHP_Ph_C12H25_2-13C.als
SHMFL TH5ATFG2
LKFIN 70334.0 Hz
LKLEV 180
LGAIN 20
LKPHS 214
LKSIG 565
CSPED 15 Hz
FILDC
FILDF

¹H NMR of 3,5-didodecylphenol (21)

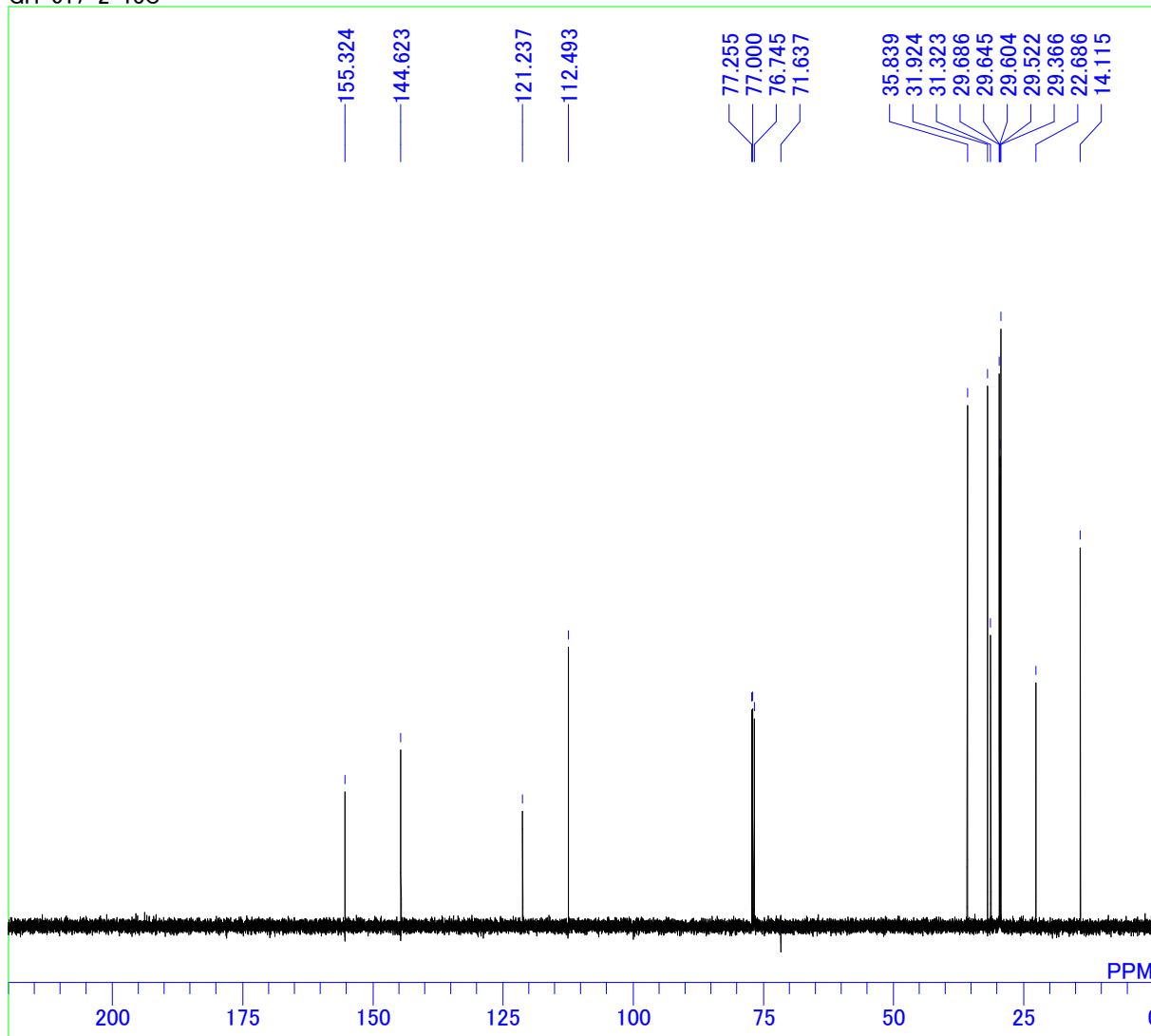
C:\Documents and Settings\ALPHA\11-11-11\UozumiG\Hamasaka\data\C12H25_2_C6H3_OH-1H.als
C12H25_2_C6H3_OH-1H



MENUF non_th5atfTH5ATFG2
OBNUC 1H
OBFRQ 500.00 MHz
OBFIN 162410.00 Hz
PW1 6.40 usec
DEADT 56.80 usec
PREDL 0.20000 msec
INIWT 10.0000 msec
POINT 16384
SAMPO 16384
TIMES 16
DUMMY 1
FREQU 10000.00 Hz
FILTR 5000 Hz
DELAY 40.00 usec
ACQTM 10.0000 sec
PD 12.0000 sec
ADBIT 16
RGAIN 19
BF 0.40 Hz
T1 0.00
T2 0.00
T3 90.00
T4 100.00
EXMOD SINGL
EXPCM Single pulse
IRNUC 1H
IRFRQ 500.00 MHz
IRFIN 162410.00 Hz
IRRPW 50 usec
IRATN 511
DFILE C:\Documents and Settings\ALPHA\11-11-11\UozumiG\Hamasaka\data\C12H25_2_C6H3_OH-1H.als
SHMFL TH5ATFG2
LKFIN 70334.0 Hz
LKLEV 180
LGAIN 22
LKPHS 214
LKSIG 952
CSPED 16 Hz
FILDC
FILDF

¹³C NMR of 3,5-didodecylphenol (21)

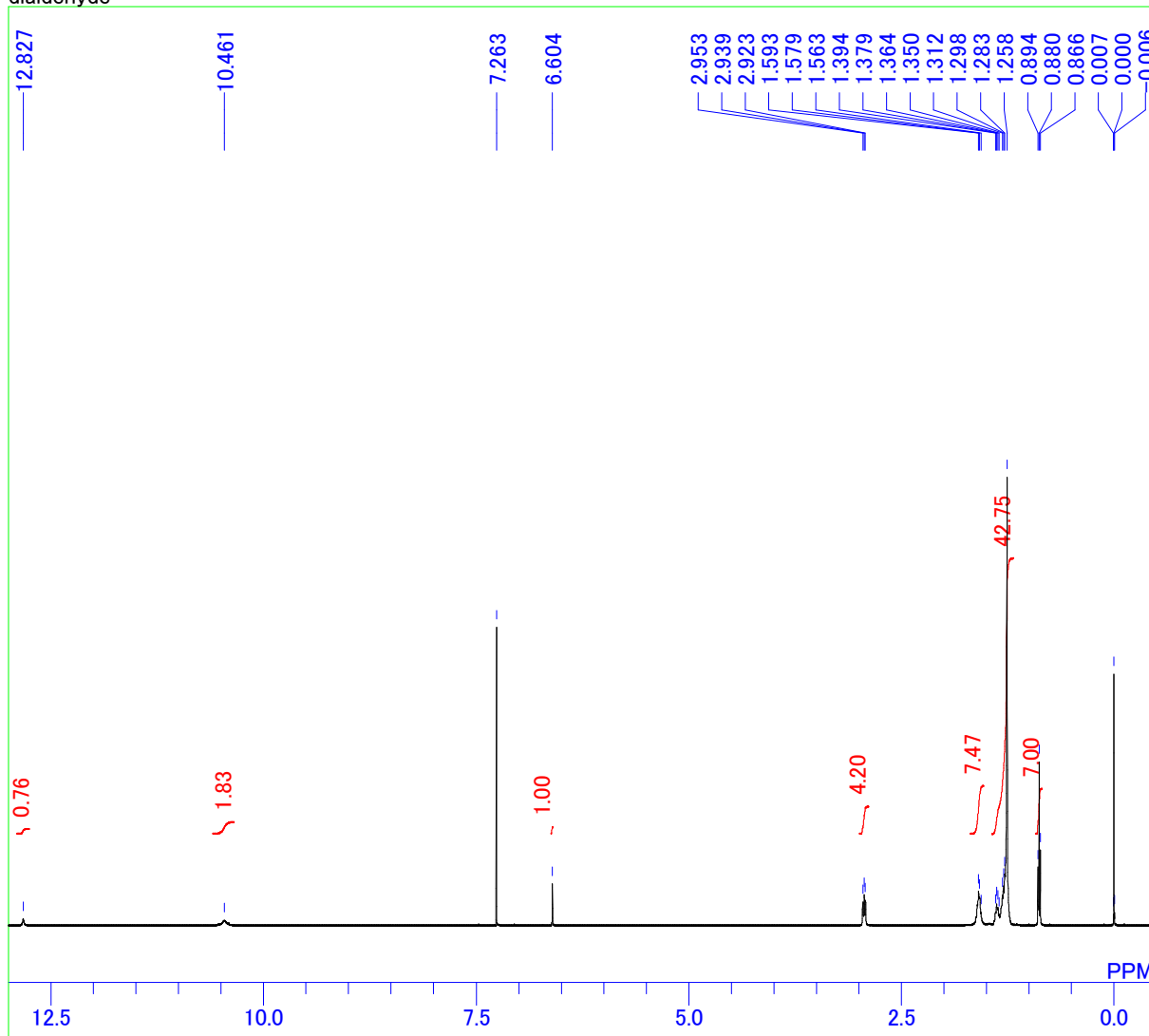
C:\Documents and Settings\ALPHA\11-11-11\UozumiG\Hamasaka\GH-017-2-13C.als
GH-017-2-13C



MENUF bcm_th5atfTH5ATFG2
OBNUC 13C
OBFRQ 125.65 MHz
OBFIN 127958.00 Hz
PW1 5.75 usec
DEADT 10.00 usec
PREDL 0.20000 msec
INIWT 10.0000 msec
POINT 32768
SAMPO 32768
TIMES 512
DUMMY 1
FREQU 33898.30 Hz
FILTR 16950 Hz
DELAY 11.80 usec
ACQTM 0.9667 sec
PD 1.0000 sec
ADBIT 16
RGAIN 25
BF 0.00 Hz
T1 0.00
T2 0.00
T3 90.00
T4 100.00
EXMOD SINGL
EXPCM Single pulse
IRNUC 1H
IRFRQ 500.00 MHz
IRFIN 162410.00 Hz
IRRPW 50 usec
IRATN 511
DFILE C:\Documents and Settings\ALPHA\11-11-11\UozumiG\Hamasaka\GH-017-2-13C.als
SHMFL TH5ATFG2
LKFIN 70334.0 Hz
LKLEV 180
LGAIN 21
LKPHS 228
LKSIG 688
CSPED 12 Hz
FILDC
FILDF

¹H NMR of 3,5-didodecyl-2,6-diformylphenol (22)

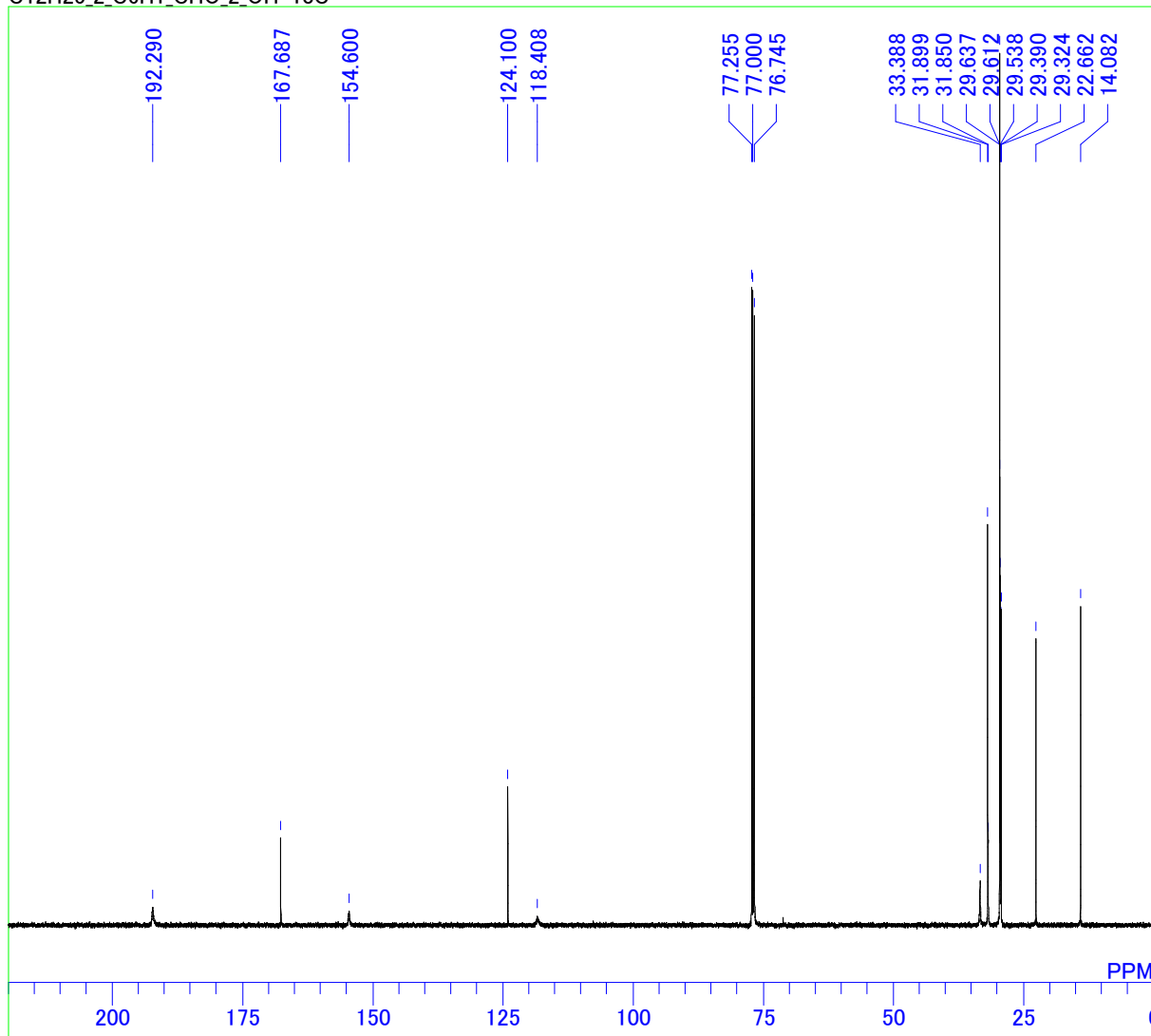
C:\Documents and Settings\ALPHA\1-1-1-1\UozumiG\Hamasaki\dialdehyde-1H.als
dialdehyde



MENUF non_th5atfTH5ATFG2_0dialdehyde
OBNUC 1H
OBFRQ 500.00 MHz
OBFIN 162410.00 Hz
PW1 6.40 usec
DEADT 56.80 usec
PREDL 0.20000 msec
INIWT 10.0000 msec
POINT 16384
SAMPO 16384
TIMES 32
DUMMY 1
FREQU 10000.00 Hz
FILTR 5000 Hz
DELAY 40.00 usec
ACQTM 10.0000 sec
PD 12.0000 sec
ADBIT 16
RGAIN 18
BF 0.00 Hz
T1 0.00
T2 0.00
T3 90.00
T4 100.00
EXMOD SINGL
EXPCM Single pulse
IRNUC 1H
IRFRQ 500.00 MHz
IRFIN 162410.00 Hz
IRRPW 50 usec
IRATN 511
DFILE C:\Documents and Settings\ALPHA\1
SHMFL TH5ATFG2_0dialdehyde
LKFIN 70334.0 Hz
LKLEV 180
LGAIN 25
LKPHS 201
LKSIG 2265
CSPED 11 Hz
FILDC
FILDF

¹³C NMR of 3,5-didodecyl-2,6-diformylphenol (22)

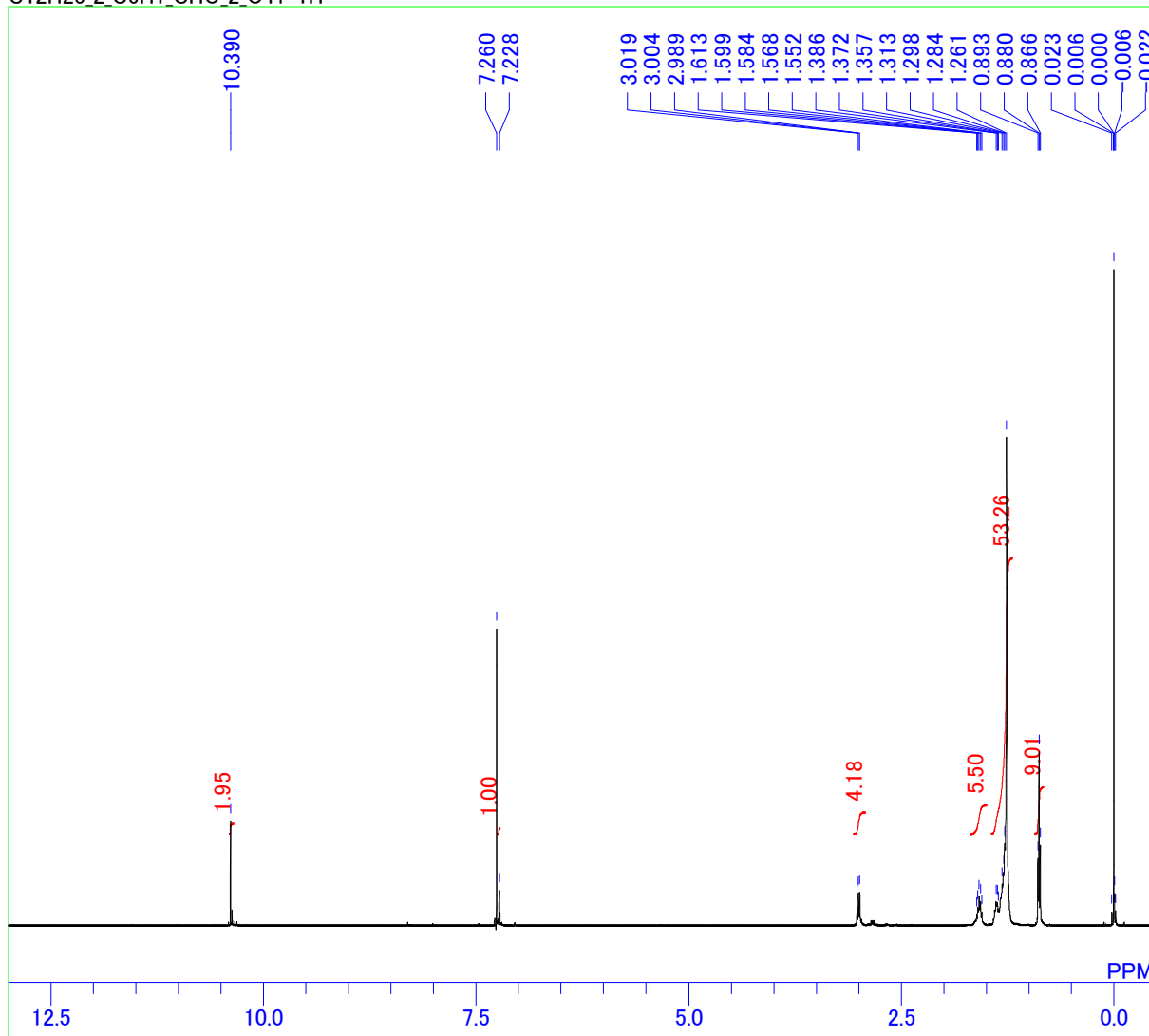
C:\Documents and Settings\ALPHA\11-11-11\UozumiG\Hamasaka\data\C12H25_2_C6H1_CHO_2_OH-13C.als
C12H25_2_C6H1_CHO_2_OH-13C



MENUF bcm_th5atfTH5ATFG2
OBNUC 13C
OBFRQ 125.65 MHz
OBFIN 127958.00 Hz
PW1 5.75 usec
DEADT 10.00 usec
PREDL 0.20000 msec
INIWT 10.0000 msec
POINT 32768
SAMPO 32768
TIMES 20000
DUMMY 1
FREQU 33898.30 Hz
FILTR 16950 Hz
DELAY 11.80 usec
ACQTM 0.9667 sec
PD 1.0000 sec
ADBIT 16
RGAIN 27
BF 1.50 Hz
T1 0.00
T2 0.00
T3 90.00
T4 100.00
EXMOD SINGL
EXPCM Single pulse
IRNUC 1H
IRFRQ 500.00 MHz
IRFIN 162410.00 Hz
IRRPW 50 usec
IRATN 511
DFILE C:\Documents and Settings\ALPHA\11-11-11\UozumiG\Hamasaka\data\C12H25_2_C6H1_CHO_2_OH-13C.als
SHMFL TH5ATFG2
LKFIN 70334.0 Hz
LKLEV 180
LGAIN 25
LKPHS 214
LKSIG 2132
CSPED 15 Hz
FILDC
FILDF

¹H NMR of 3,5-didodecyl-2,6-diformylphenyl trifluoromethanesulfonate (23)

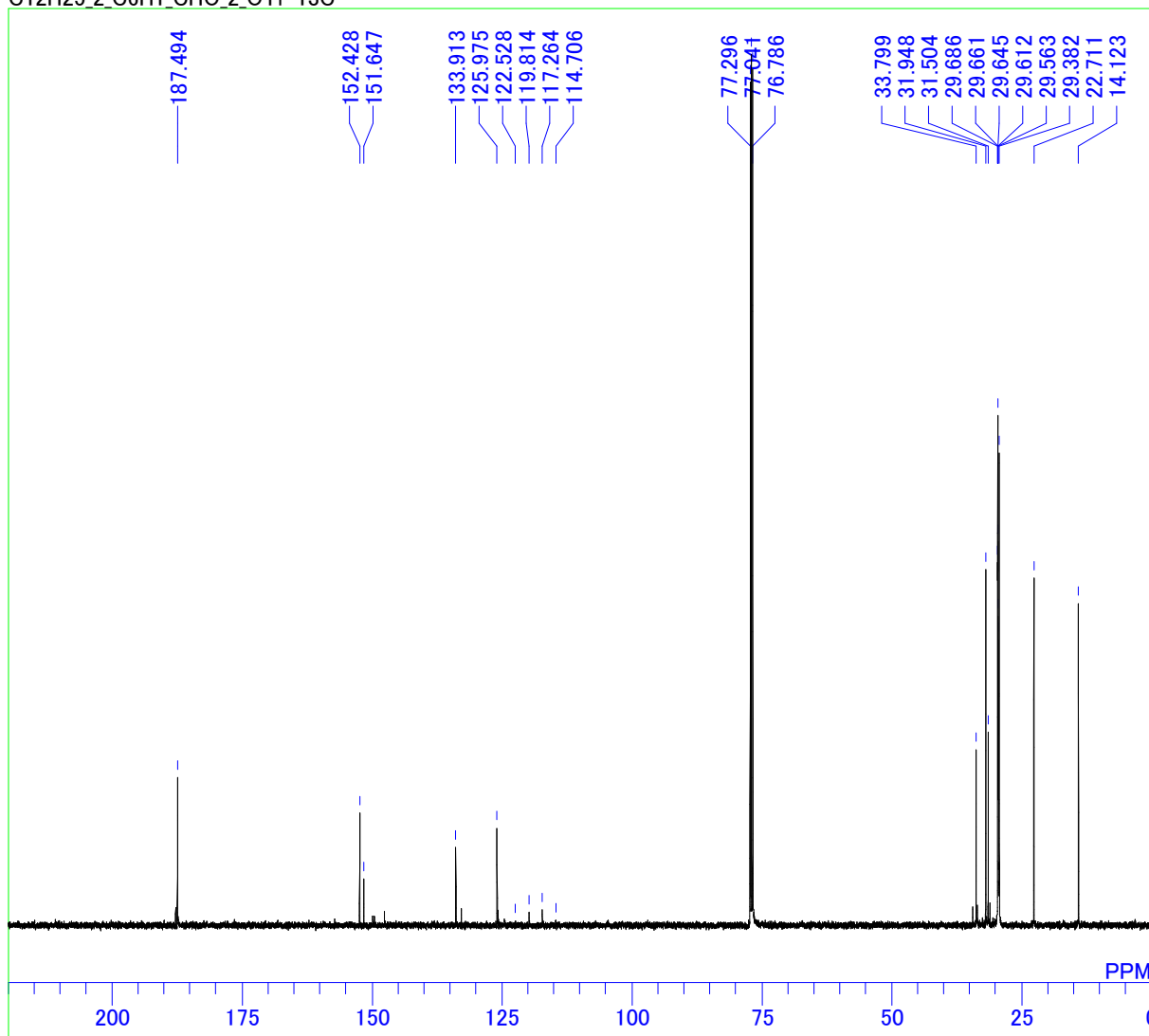
C:\Documents and Settings\ALPHA\1-1-1-1\UozumiG\Hamasaka\data\C12H25_2_C6H1_CHO_2_OTf-1H.als
C12H25_2_C6H1_CHO_2_OTf-1H



MENUF non_th5atfTH5ATFG2
OBNUC 1H
OBFRQ 500.00 MHz
OBFIN 162410.00 Hz
PW1 6.40 usec
DEADT 56.80 usec
PREDL 0.20000 msec
INIWT 10.0000 msec
POINT 16384
SAMPO 16384
TIMES 16
DUMMY 1
FREQU 10000.00 Hz
FILTR 5000 Hz
DELAY 40.00 usec
ACQTM 10.0000 sec
PD 12.0000 sec
ADBIT 16
RGAIN 20
BF 0.00 Hz
T1 0.00
T2 0.00
T3 90.00
T4 100.00
EXMOD SINGL
EXPCM Single pulse
IRNUC 1H
IRFRQ 500.00 MHz
IRFIN 162410.00 Hz
IRRPW 50 usec
IRATN 511
DFILE C:\Documents and Settings\ALPHA\1
SHMFL TH5ATFG2
LKFIN 70334.0 Hz
LKLEV 180
LGAIN 21
LKPHS 214
LKSIG 755
CSPED 12 Hz
FILDC
FILDF

¹³C NMR of 3,5-didodecyl-2,6-diformylphenyl trifluoromethanesulfonate (23)

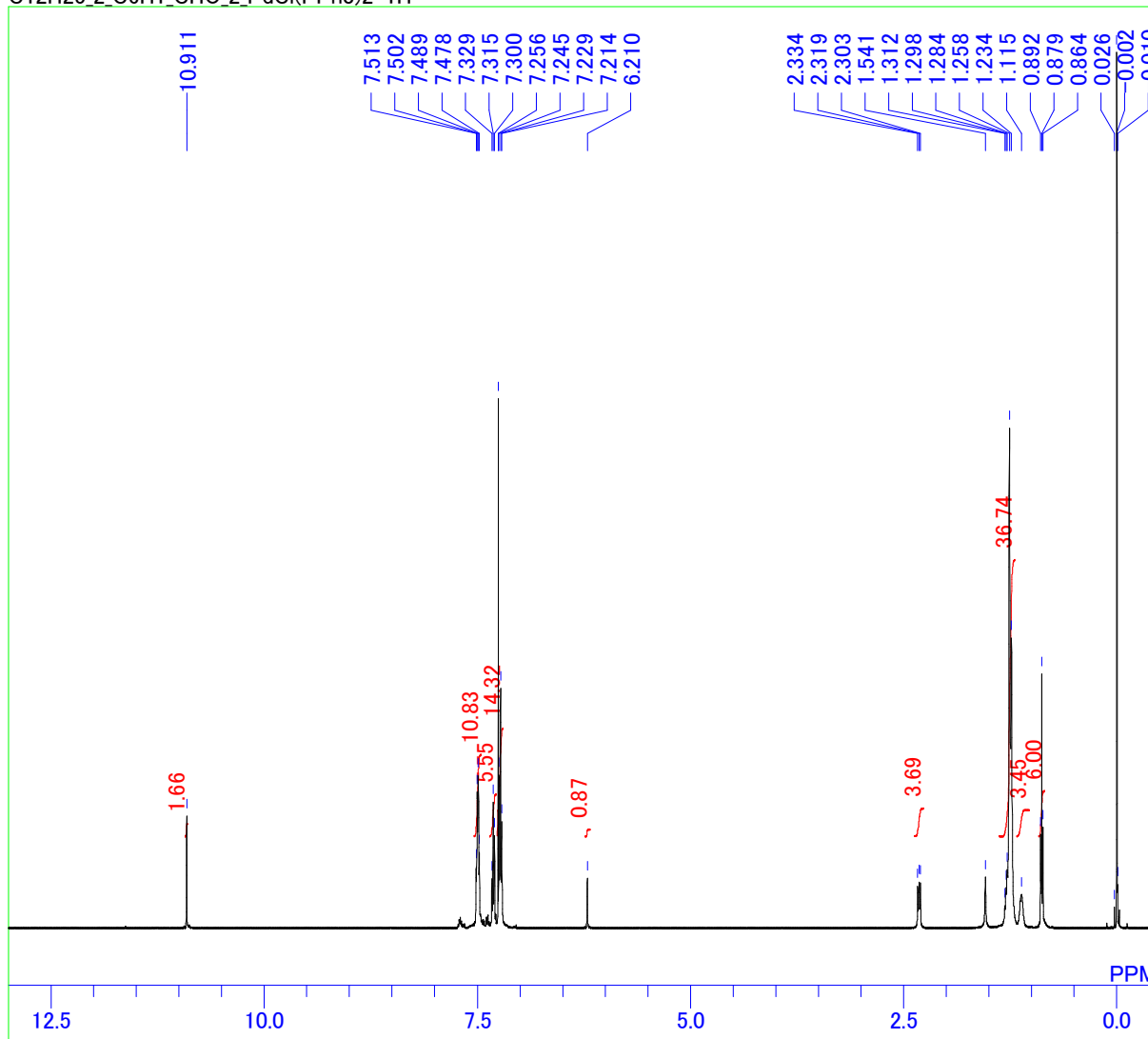
C:\Documents and Settings\ALPHA\11-11-11\UozumiG\Hamasaka\data\C12H25_2_C6H1_CHO_2_OTf-13C.als
C12H25_2_C6H1_CHO_2_OTf-13C



MENUF bcm_th5atfTH5ATFG2
OBNUC 13C
OBFRQ 125.65 MHz
OBFIN 127958.00 Hz
PW1 5.75 usec
DEADT 10.00 usec
PREDL 0.20000 msec
INIWT 10.0000 msec
POINT 32768
SAMPO 32768
TIMES 20000
DUMMY 1
FREQU 33898.30 Hz
FILTR 16950 Hz
DELAY 11.80 usec
ACQTM 0.9667 sec
PD 1.0000 sec
ADBIT 16
RGAIN 27
BF 1.50 Hz
T1 0.00
T2 0.00
T3 90.00
T4 100.00
EXMOD SINGL
EXPCM Single pulse
IRNUC 1H
IRFRQ 500.00 MHz
IRFIN 162410.00 Hz
IRRPW 50 usec
IRATN 511
DFILE C:\Documents and Settings\ALPHA\1
SHMFL TH5ATFG2
LKFIN 70334.0 Hz
LKLEV 180
LGAIN 21
LKPHS 214
LKSIG 678
CSPED 16 Hz
FILDC
FILDF

¹H NMR of *trans*-(3,5-didodecyl-2,6-diformylphenyl)chlorobis(triphenylphosphine)palladium (7)

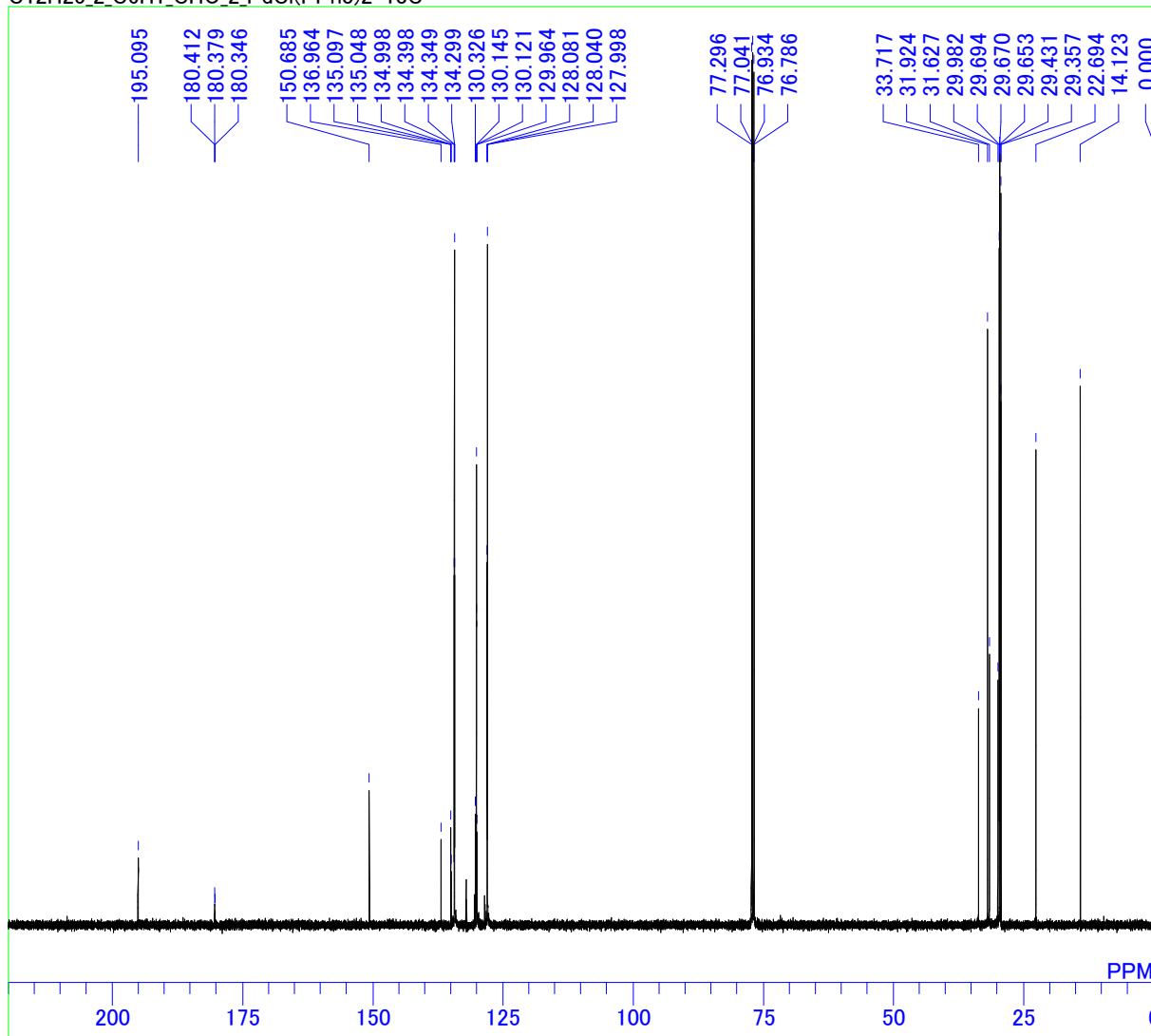
C:\Documents and Settings\ALPHA\11-11-11\UozumiG\Hamasa\data\C12H25_2_C6H1_CHO_2_PdCl(PPh3)2-1H-.als
C12H25_2_C6H1_CHO_2_PdCl(PPh3)2-1H



MENUF non_th5atTH5ATFG2
OBNUC 1H
OBFRQ 500.00 MHz
OBFIN 162410.00 Hz
PW1 6.40 usec
DEADT 56.80 usec
PREDL 0.20000 msec
INIWT 10.0000 msec
POINT 16384
SAMPO 16384
TIMES 16
DUMMY 1
FREQU 10000.00 Hz
FILTR 5000 Hz
DELAY 40.00 usec
ACQTM 10.0000 sec
PD 12.0000 sec
ADBIT 16
RGAIN 19
BF 0.00 Hz
T1 0.00
T2 0.00
T3 90.00
T4 100.00
EXMOD SINGL
EXPCM Single pulse
IRNUC 1H
IRFRQ 500.00 MHz
IRFIN 162410.00 Hz
IRRPW 50 usec
IRATN 511
DFILE C:\Documents and Settings\ALPHA\11-11-11\UozumiG\Hamasa\data\TH5ATFG2
SHMFL TH5ATFG2
LKFIN 70334.0 Hz
LKLEV 180
LGAIN 21
LKPHS 214
LKSIG 652
CSPED 14 Hz
FILDC
FILDF

¹³C NMR of *trans*-(3,5-didodecyl-2,6-diformylphenyl)chlorobis(triphenylphosphine)palladium (7)

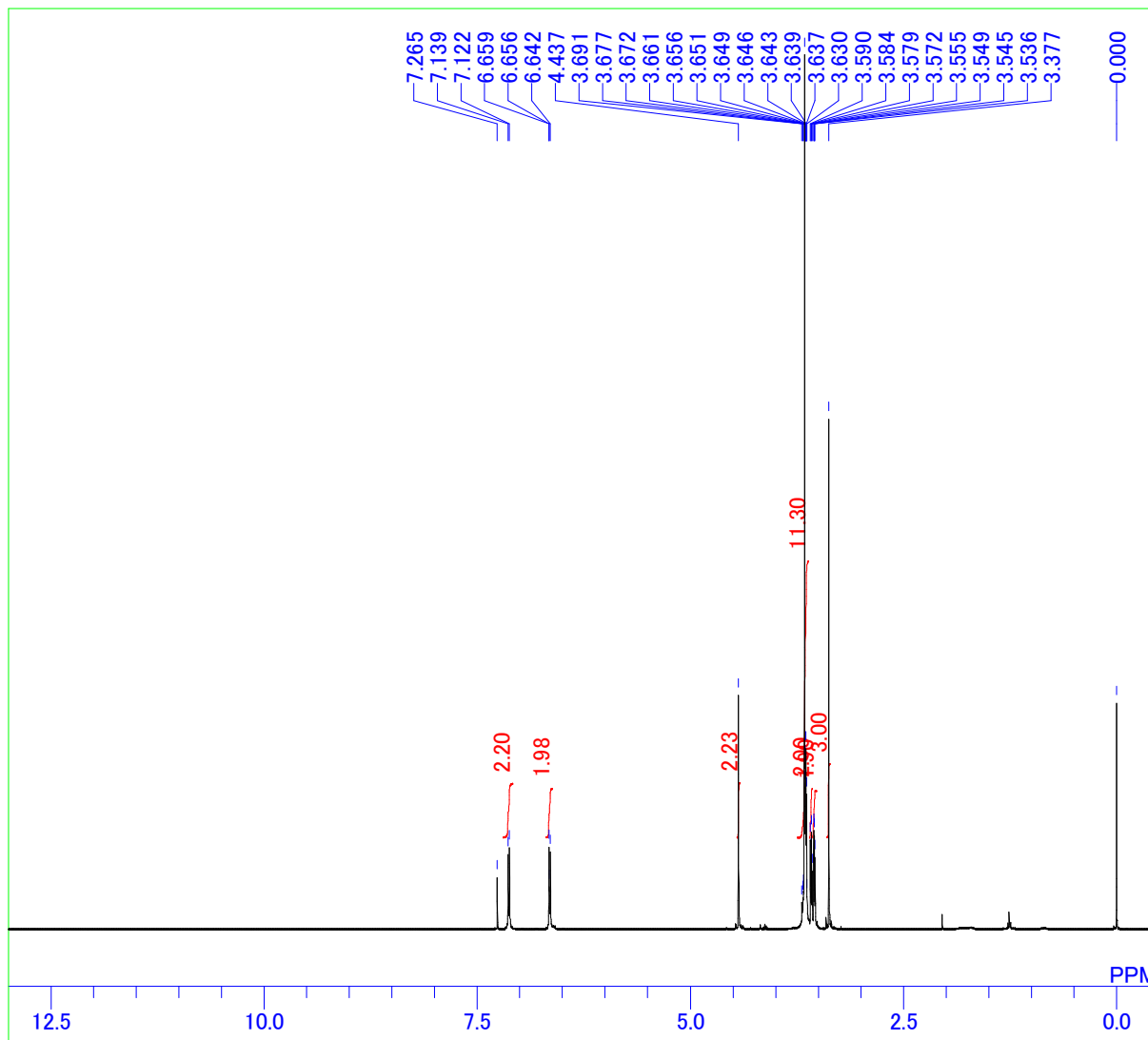
C:\Documents and Settings\ALPHA\11-11-11\UozumiG\Hamasa\data\C12H25_2_C6H1_CHO_2_PdCl(PPh3)2-13C.als
C12H25_2_C6H1_CHO_2_PdCl(PPh3)2-13C



MENUF bcm_th5atfTH5ATFG2
OBNUC 13C
OBFRQ 125.65 MHz
OBFIN 127958.00 Hz
PW1 5.75 usec
DEADT 10.00 usec
PREDL 0.20000 msec
INIWT 10.0000 msec
POINT 32768
SAMPO 32768
TIMES 20000
DUMMY 1
FREQU 33898.30 Hz
FILTR 16950 Hz
DELAY 11.80 usec
ACQTM 0.9667 sec
PD 1.0000 sec
ADBIT 16
RGAIN 27
BF -0.10 Hz
T1 0.00
T2 0.00
T3 90.00
T4 100.00
EXMOD SINGL
EXPCM Single pulse
IRNUC 1H
IRFRQ 500.00 MHz
IRFIN 162410.00 Hz
IRRPW 50 usec
IRATN 511
DFILE C:\Documents and Settings\ALPHA\11-11-11\UozumiG\Hamasa\data\C12H25_2_C6H1_CHO_2_PdCl(PPh3)2-13C.als
SHMFL TH5ATFG2
LKFIN 70334.0 Hz
LKLEV 180
LGAIN 26
LKPHS 214
LKSIG 2275
CSPED 16 Hz
FILDC
FILDF

¹H NMR of 4-(2,5,8,11-tetraoxadodecyl)aniline (9)

C:\Documents and Settings\ALPHA\1-1-1-1\UozumiG\Hamasaka\data\4-TEG-aniline-1H-2.als

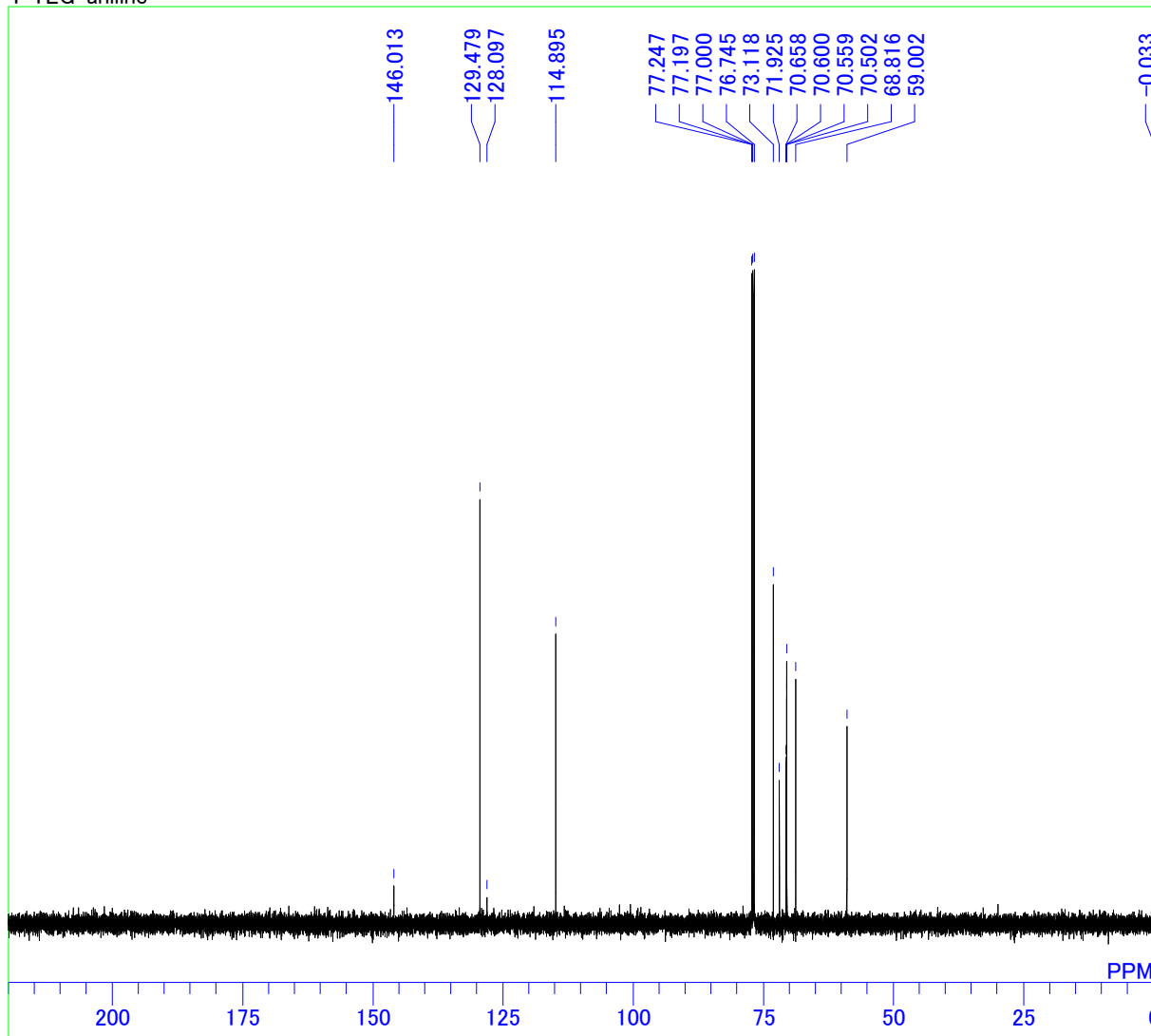


non_th5atTH5ATFG2
1H

MENUF	OBNUC	500.00 MHz
OBFRQ	162410.00 Hz	
OBFIN	6.40 usec	
PW1	56.80 usec	
DEADT	0.20000 msec	
PREDL	10.0000 msec	
INIWT	16384	
POINT	16384	
SAMPO	8	
TIMES	1	
DUMMY	10000.00 Hz	
FREQU	5000 Hz	
FILTR	40.00 usec	
DELAY	1.6384 sec	
ACQTM	2.0000 sec	
PD	16	
ADBIT	16	
RGAIN	0.10 Hz	
BF	0.00	
T1	0.00	
T2	90.00	
T3	100.00	
T4	SINGL	
EXMOD	Single pulse	
EXPCM	1H	
IRNUC	500.00 MHz	
IRFRQ	162410.00 Hz	
IRFIN	50 usec	
IRRPW	511	
IRATN	C:\Documents and Settings\ALPHA\1	
DFILE	TH5ATFG2	
SHMFL	70334.0 Hz	
LKFIN	180	
LKLEV	22	
LGAIN	214	
LKPHS	959	
LKSIG	16 Hz	
CSPED	FILDC	
FILDF		

¹³C NMR of 4-(2,5,8,11-tetraoxadodecyl)aniline (9)

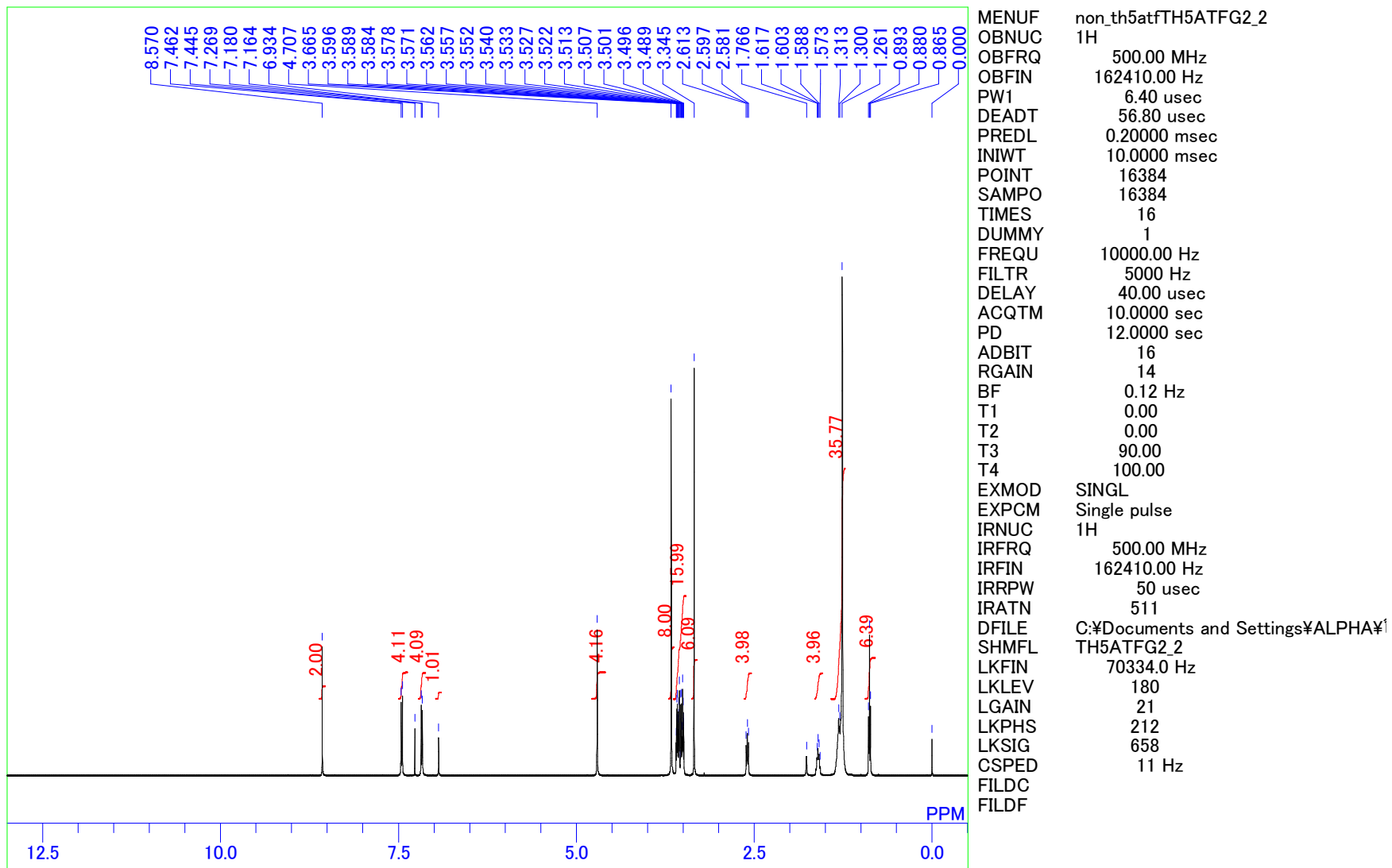
C:\Documents and Settings\ALPHA\11-11-11\UozumiG\Hamasaka\data\4-TEG-aniline-13C.als
4-TEG-aniline



MENUF bcm_th5atfTH5ATFG2
OBNUC 13C
OBFRQ 125.65 MHz
OBFIN 127958.00 Hz
PW1 5.75 usec
DEADT 10.00 usec
PREDL 0.20000 msec
INIWT 10.0000 msec
POINT 32768
SAMPO 32768
TIMES 10000
DUMMY 1
FREQU 33898.30 Hz
FILTR 16950 Hz
DELAY 11.80 usec
ACQTM 0.9667 sec
PD 1.0000 sec
ADBIT 16
RGAIN 27
BF 0.00 Hz
T1 0.00
T2 0.00
T3 90.00
T4 100.00
EXMOD SINGL
EXPCM Single pulse
IRNUC 1H
IRFRQ 500.00 MHz
IRFIN 162410.00 Hz
IRRPW 50 usec
IRATN 511
DFILE C:\Documents and Settings\ALPHA\1
SHMFL TH5ATFG2
LKFIN 70334.0 Hz
LKLEV 180
LGAIN 22
LKPHS 214
LKSIG 953
CSPED 17 Hz
FILDC
FILDF

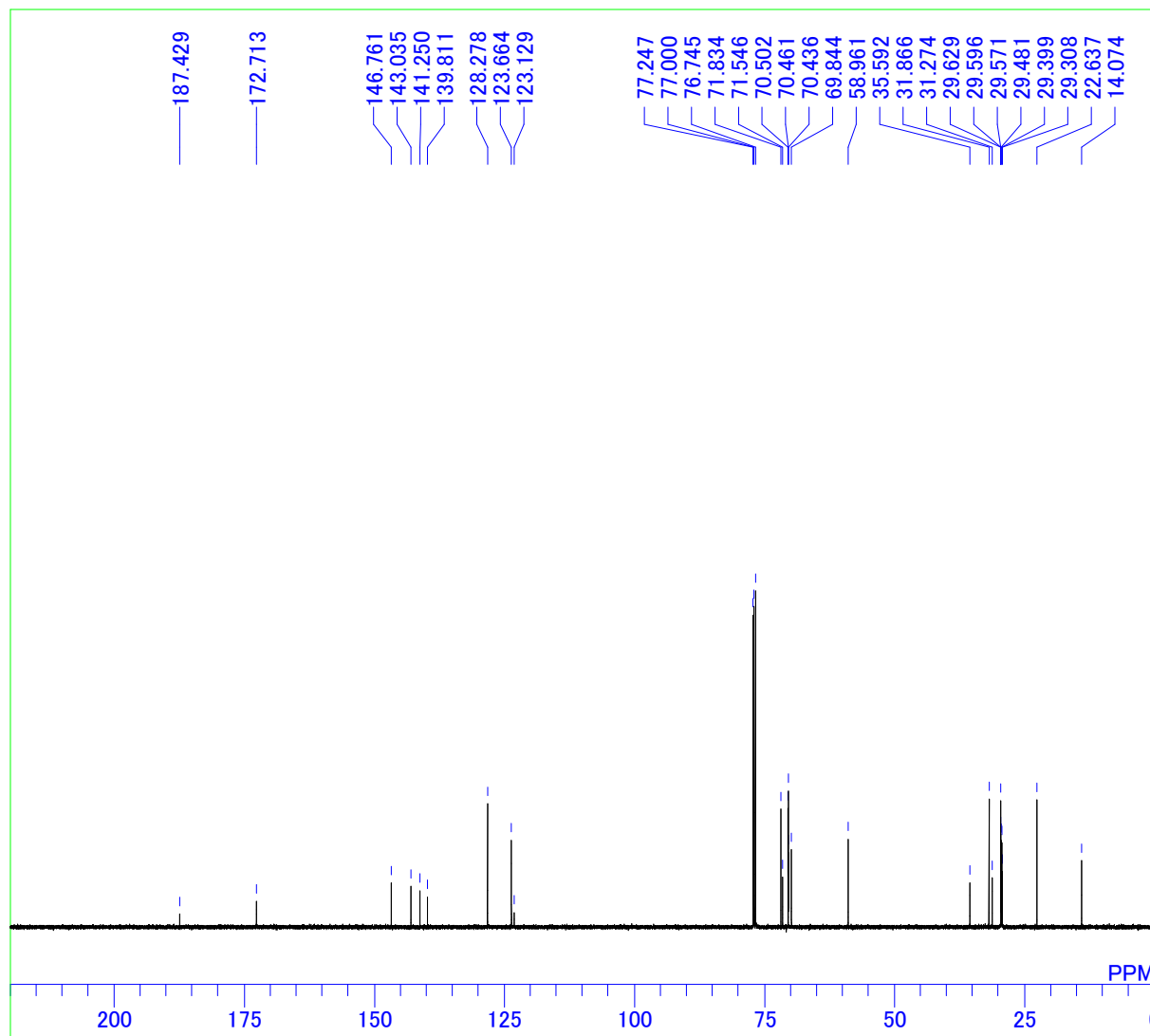
¹H NMR of [3,5-bis(2,5,8,11-tetraoxadodecyl)-2,6-bis(*N*-4-dodecylphenylimino)phenyl]chloropalladium (4)

C:\Documents and Settings\ALPHA\1-1-1-1\UozumiG\muto\TM6001-TM6013-01.als



¹³C NMR of [3,5-bi(2,5,8,11-tetraoxadodecyl)-2,6-bis(*N*-4-dodecylphenylimino)phenyl]chloropalladium (4)

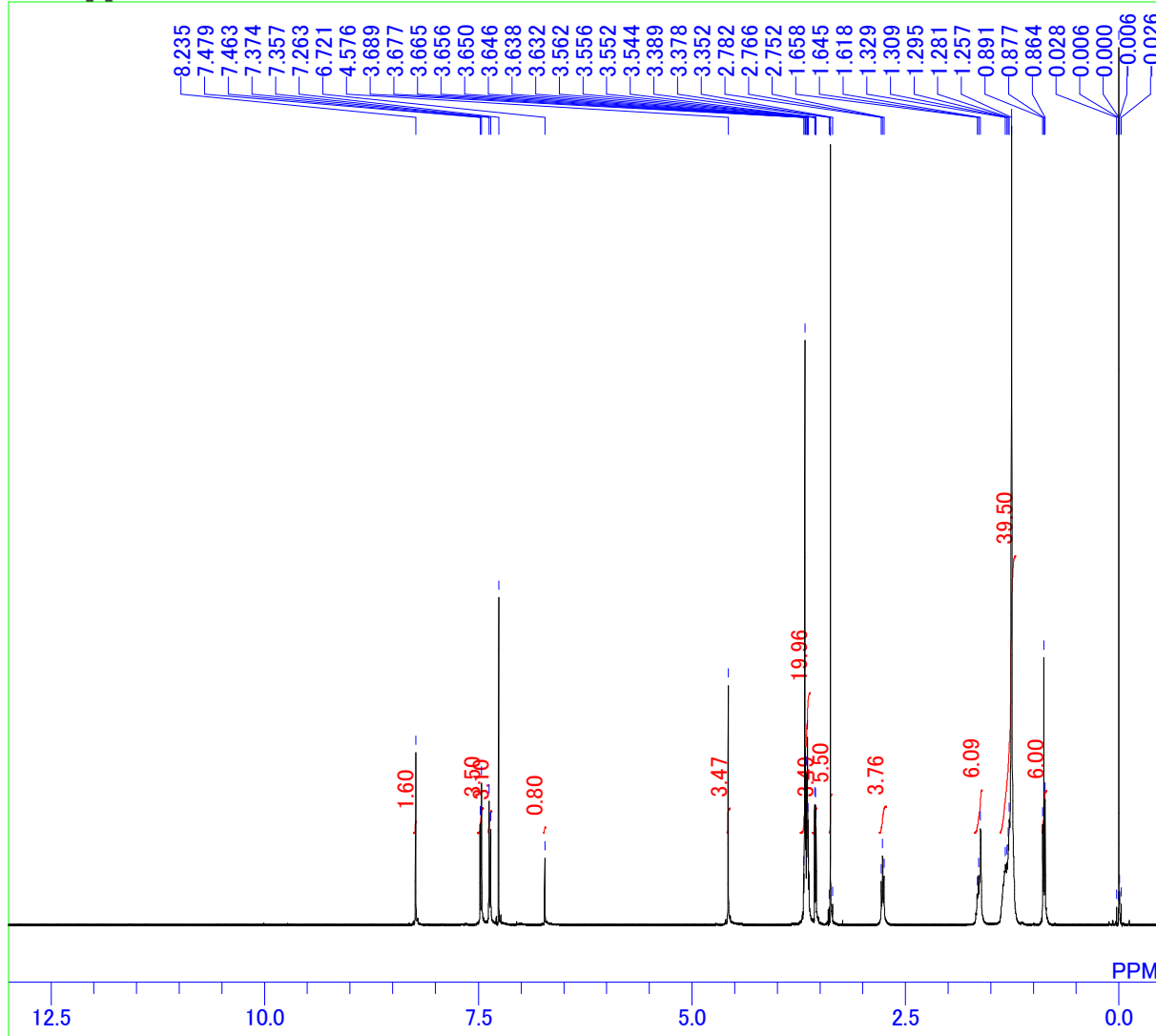
C:\Documents and Settings\ALPHA\11-11-11\UozumiG\muto\full data\PincerPd(TM6013-01-13c).als



MENUF bcm_th5atfTH5ATFG2_2
OBNUC 13C
OBFRQ 125.65 MHz
OBFIN 127958.00 Hz
PW1 5.75 usec
DEADT 10.00 usec
PREDL 0.20000 msec
INIWT 10.0000 msec
POINT 32768
SAMPO 32768
TIMES 22000
DUMMY 1
FREQU 33898.30 Hz
FILTR 16950 Hz
DELAY 11.80 usec
ACQTM 0.9667 sec
PD 1.0000 sec
ADBIT 16
RGAIN 27
BF 0.12 Hz
T1 0.00
T2 0.00
T3 90.00
T4 100.00
EXMOD SINGL
EXPCM Single pulse
IRNUC 1H
IRFRQ 500.00 MHz
IRFIN 162410.00 Hz
IRRPW 50 usec
IRATN 511
DFILE C:\Documents and Settings\ALPHA\11-11-11\UozumiG\muto\full data\PincerPd(TM6013-01-13c).als
SHMFL TH5ATFG2_2
LKFIN 70334.0 Hz
LKLEV 180
LGAIN 21
LKPHS 212
LKSIG 647
CSPED 16 Hz
FILDC
FILDF

¹H NMR of [3,5-didodecyl-21,6-bis{N-4-(2,5,8,11-tetraoxadodecyl)phenylimino}phenyl]chloropalladium (5)

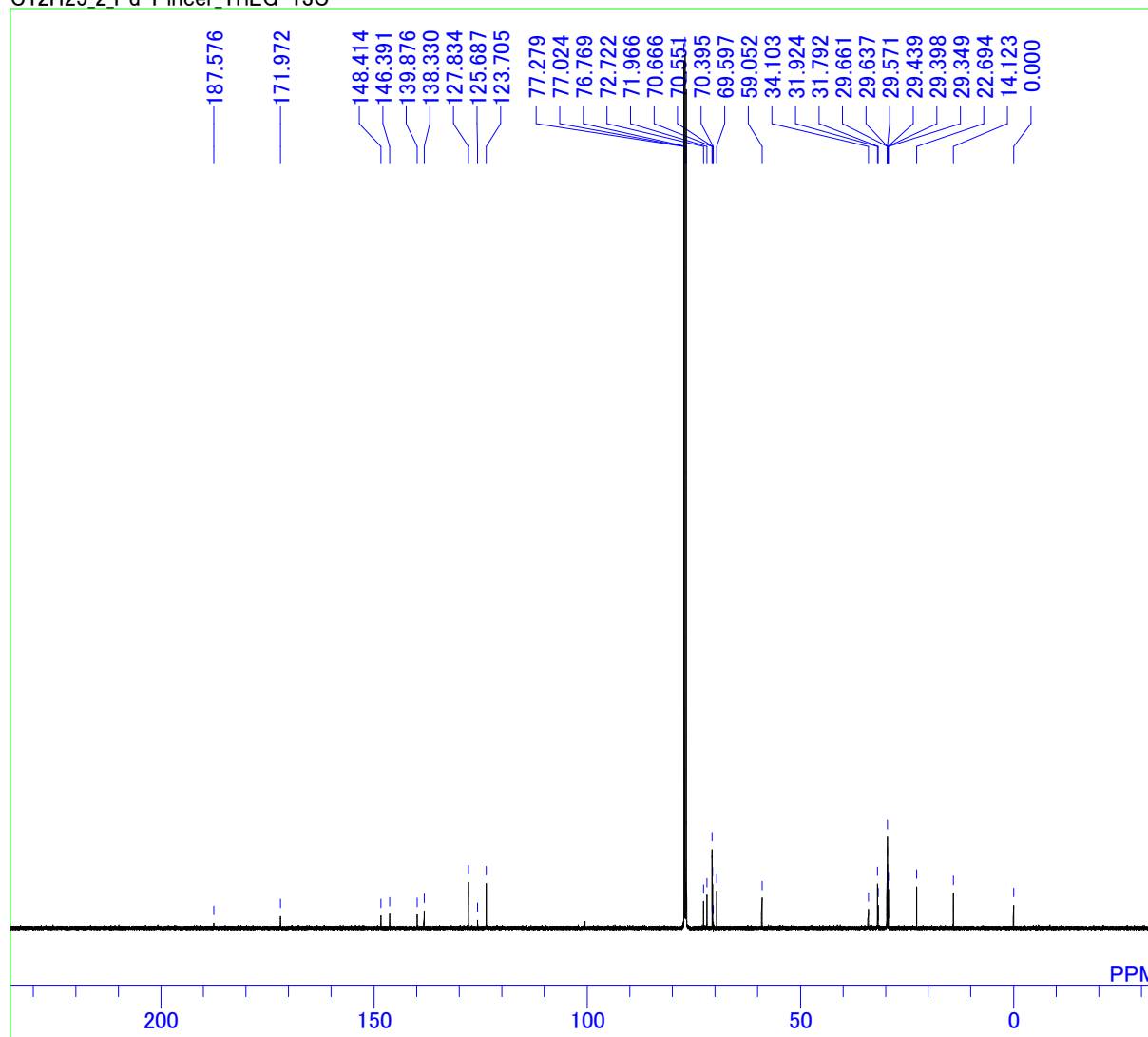
C:\Documents and Settings\ALPHA\11-11-11\UozumiG\Hamasaka\data\C12H25_2_Pd-Pincer_TriEG-1H.als
C12H25_2_Pd-Pincer-TriEG-1H



MENUF	non_th5atfTH5ATFG2
OBNUC	1H
OBFRQ	500.00 MHz
OBFIN	162410.00 Hz
PW1	6.40 usec
DEADT	56.80 usec
PREDL	0.20000 msec
INIWT	10.0000 msec
POINT	16384
SAMPO	16384
TIMES	16
DUMMY	1
FREQU	10000.00 Hz
FILTR	5000 Hz
DELAY	40.00 usec
ACQTM	10.0000 sec
PD	12.0000 sec
ADBIT	16
RGAIN	17
BF	0.00 Hz
T1	0.00
T2	0.00
T3	90.00
T4	100.00
EXMOD	SINGL
EXPCM	Single pulse
IRNUC	1H
IRFRQ	500.00 MHz
IRFIN	162410.00 Hz
IRRPW	50 usec
IRATN	511
DFILE	C:\Documents and Settings\ALPHA\11-11-11\UozumiG\Hamasaka\data\TH5ATFG2
SHMFL	TH5ATFG2
LKFIN	70334.0 Hz
LKLEV	180
LGAIN	24
LKPHS	214
LKSIG	1656
CSPED	13 Hz
FILDC	
FILDF	

¹H NMR of [3,5-didodecyl-21,6-bis{N-4-(2,5,8,11-tetraoxadodecyl)phenylimino}phenyl]chloropalladium (5)

C:\Documents and Settings\ALPHA\1-1-1-1\UozumiG\Hamasaka\data\C12H25_2_Pd-Pincer_TriEG-13C.als
C12H25_2_Pd-Pincer_TriEG-13C



MENUF bcm_th5atfTH5ATFG2
OBNUC 13C
OBFRQ 125.65 MHz
OBFIN 127958.00 Hz
PW1 5.75 usec
DEADT 10.00 usec
PREDL 0.20000 msec
INIWT 10.0000 msec
POINT 32768
SAMPO 32768
TIMES 40000
DUMMY 1
FREQU 33898.30 Hz
FILTR 16950 Hz
DELAY 11.80 usec
ACQTM 0.9667 sec
PD 1.0000 sec
ADBIT 16
RGAIN 27
BF 0.50 Hz
T1 0.00
T2 0.00
T3 90.00
T4 100.00
EXMOD SINGL
EXPCM Single pulse
IRNUC 1H
IRFRQ 500.00 MHz
IRFIN 162410.00 Hz
IRRPW 50 usec
IRATN 511
DFILE C:\Documents and Settings\ALPHA\1
SHMFL TH5ATFG2
LKFIN 70334.0 Hz
LKLEV 180
LGAIN 23
LKPHS 214
LKSIG 813
CSPED 16 Hz
FILDC
FILDF