

Supporting Information

Coinage metal complexes of 2-diphenylphosphino-3-methylindole

Igor O. Koshevoy,^{a*} Julia R. Shakirova,^b Alexei S. Melnikov,^c Matti Haukka,^a Sergey P. Tunik^{b*}
and Tapani A. Pakkanen^a

^a Department of Chemistry, University of Eastern Finland, Joensuu, 80101, Finland

^b Department of Chemistry, St.-Petersburg State University, Universitetskii pr. 26, 198504, St.-Petersburg, Russia

^c Department of Physics, St.-Petersburg State University, Universitetskii pr. 26, 198504, St.-Petersburg, Russia

E-mail: igor.koshevoy@uef.fi; stunik@inbox.ru

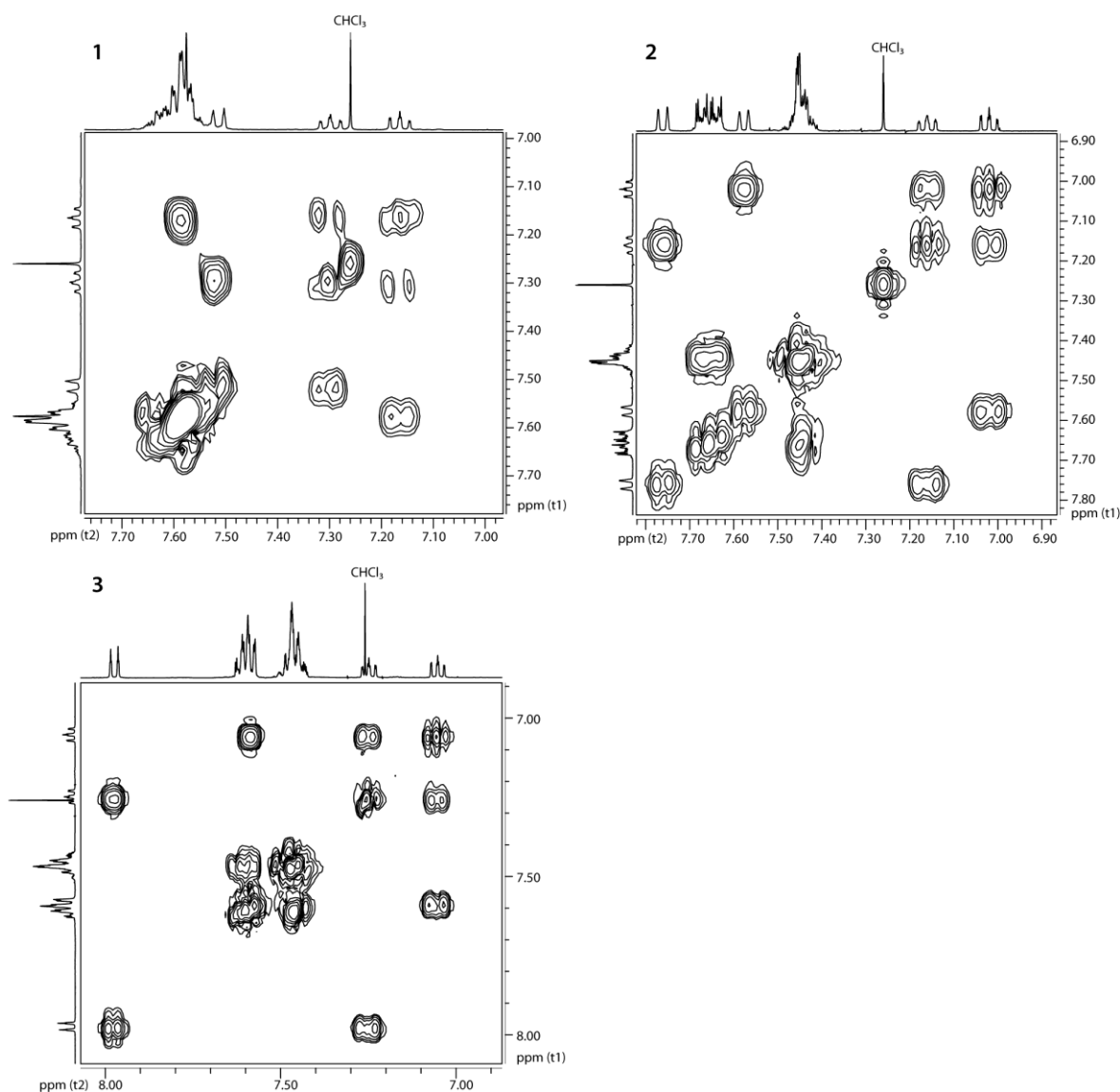


Figure S1. ^1H - ^1H COSY NMR spectra of the complexes **1–3**, CDCl_3 , 25 °C, 400 MHz.

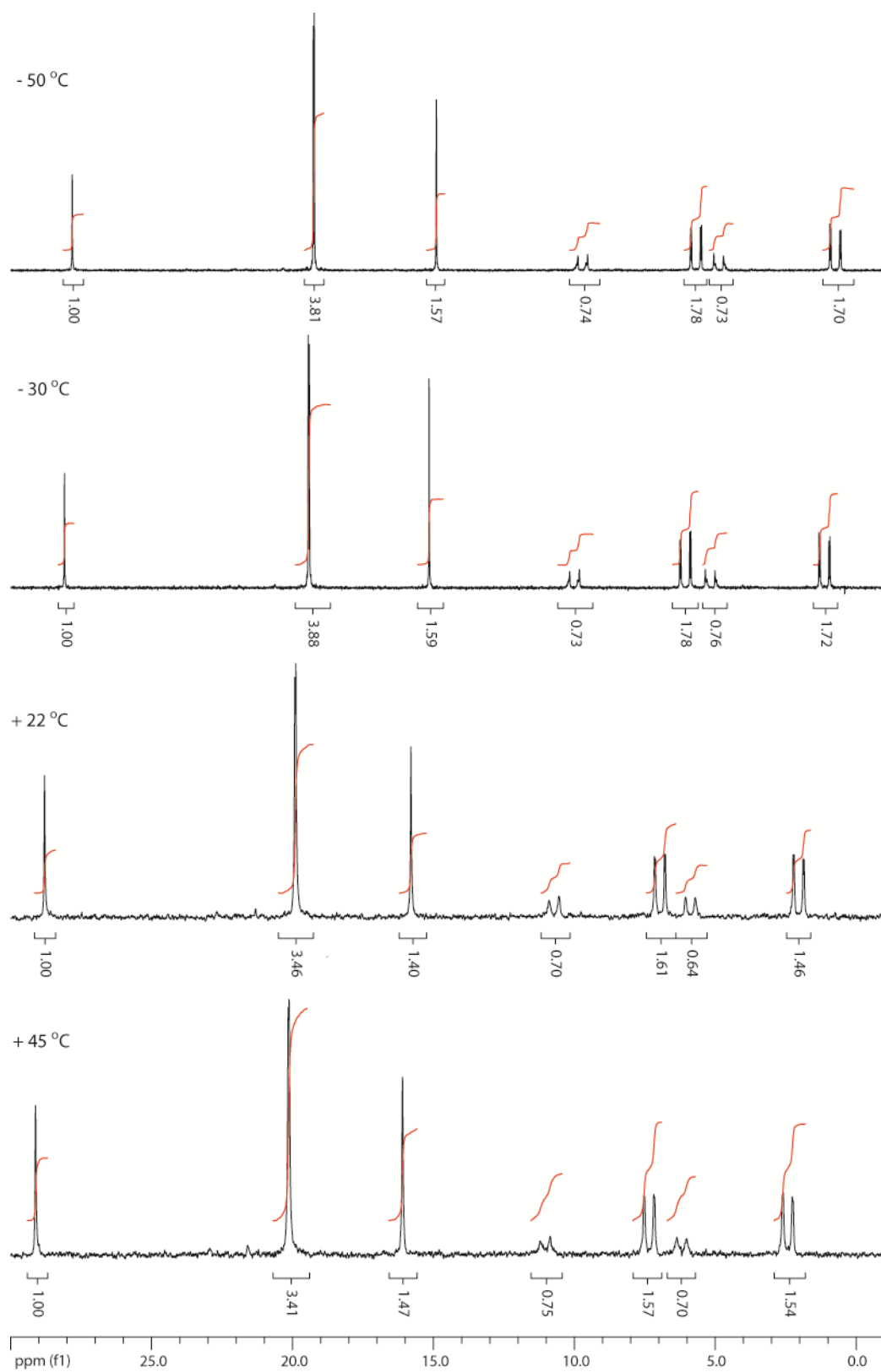


Figure S2. VT $^{31}\text{P}\{^1\text{H}\}$ NMR spectra of the mixture **4**, CDCl_3 , 300 MHz.

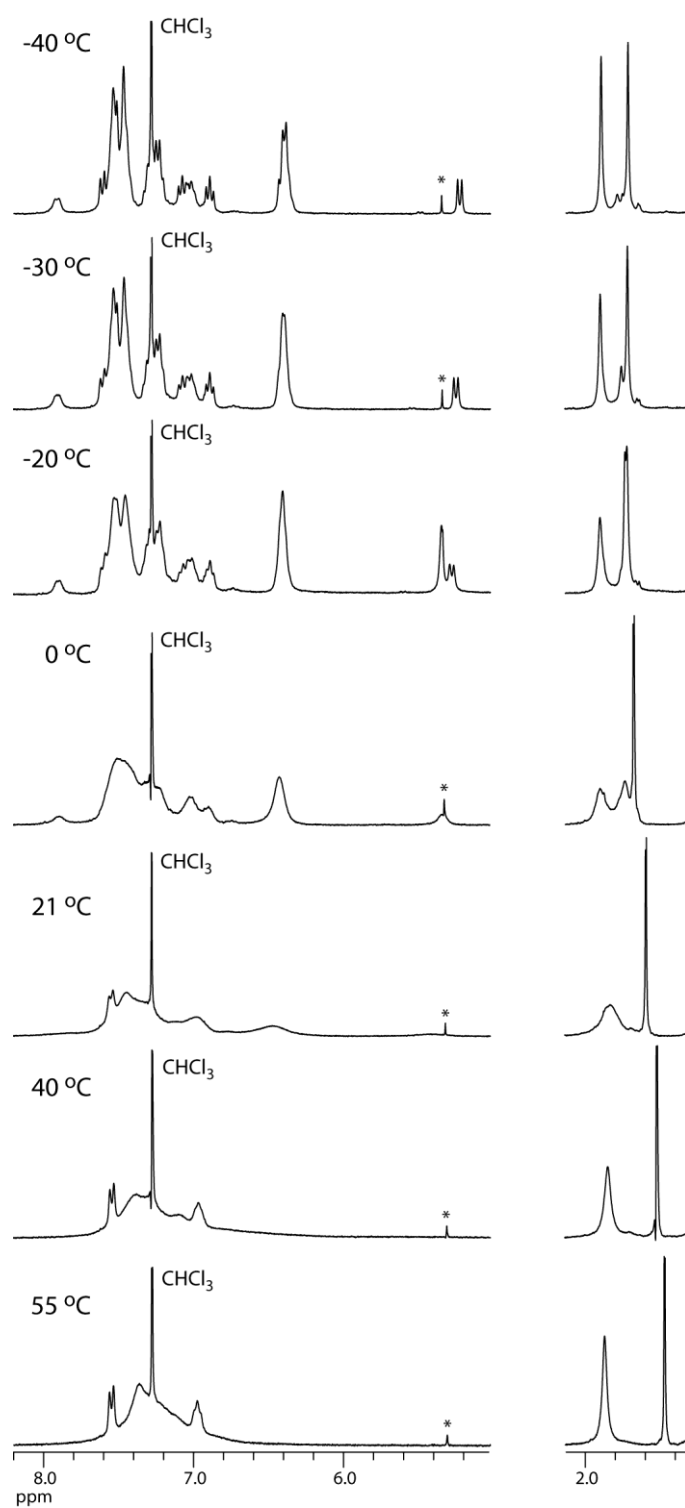


Figure S3. VT ¹H NMR spectra of the complex **6**, CDCl₃, 300 MHz.

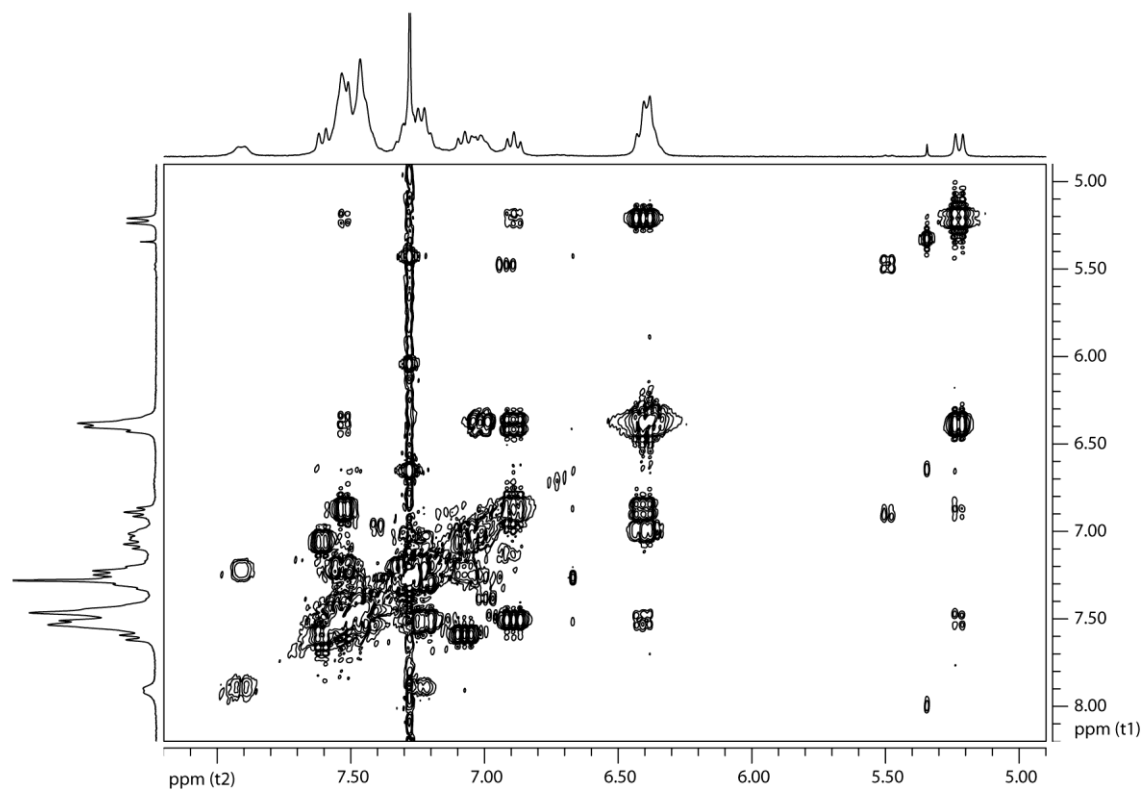


Figure S4. ^1H - ^1H COSY NMR spectrum of the complex **6**, CDCl_3 , -40°C , 300 MHz.

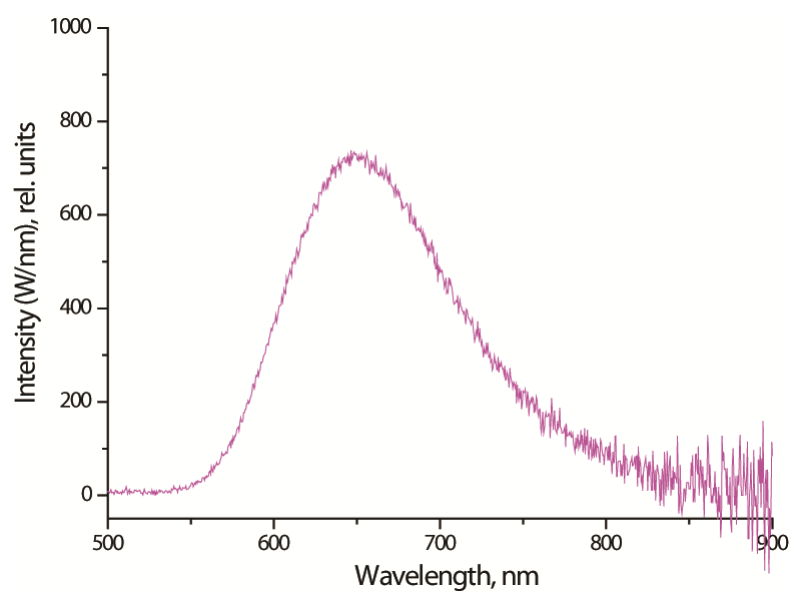


Figure S5. Solid-state emission spectrum of **6** at room temperature.