

Electronic Supplementary Information

Ferromagnetic heterotrinnuclear Cu-Ni complexes of a compartmental chiral Schiff base

**Matilde Fondo, Noelia Ocampo, Ana M. García-Deibe, Isabel García-Santos, Jesús
Sanmartín, J. Antonio Mota, J. Luis Pérez-Lustres**

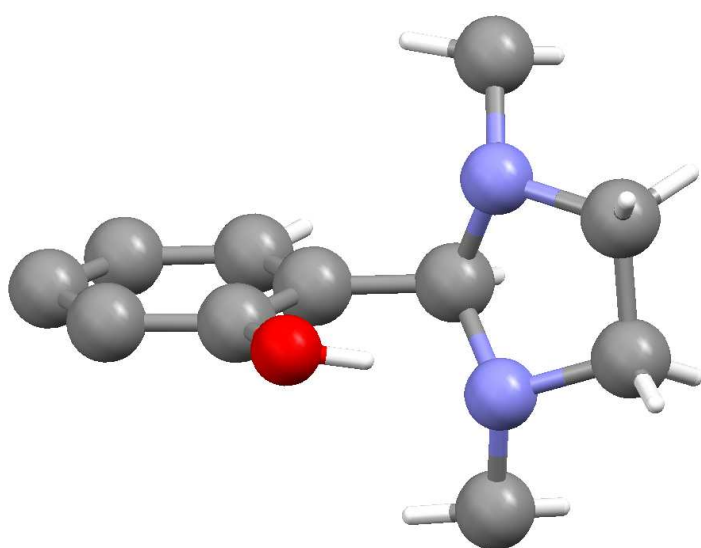


Fig S1. Detail of one of the imidazolidine rings and groups in its vicinity, for a better appreciation of its conformation.

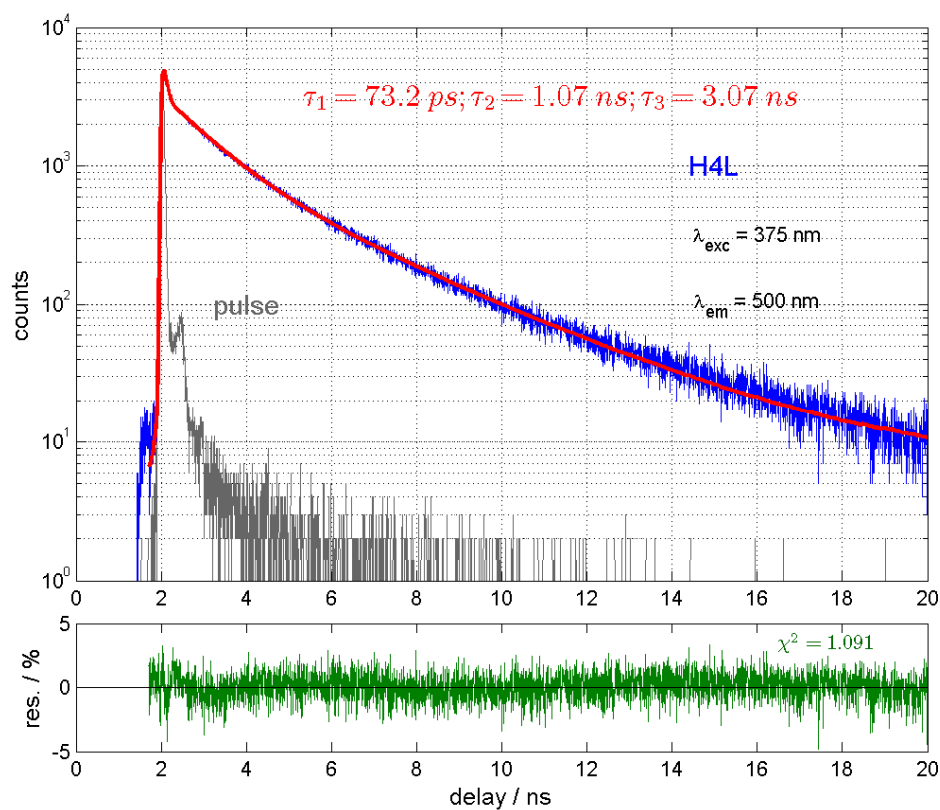


Fig. S2. Fluorescence decay curve of H₄L (blue) measured at 500 nm and magic angle polarization with 375 nm excitation (pulse profile shown in grey). The decay curve was deconvoluted and fitted to a triexponential function (red). The weighted residuals are shown in the lower panel (green).

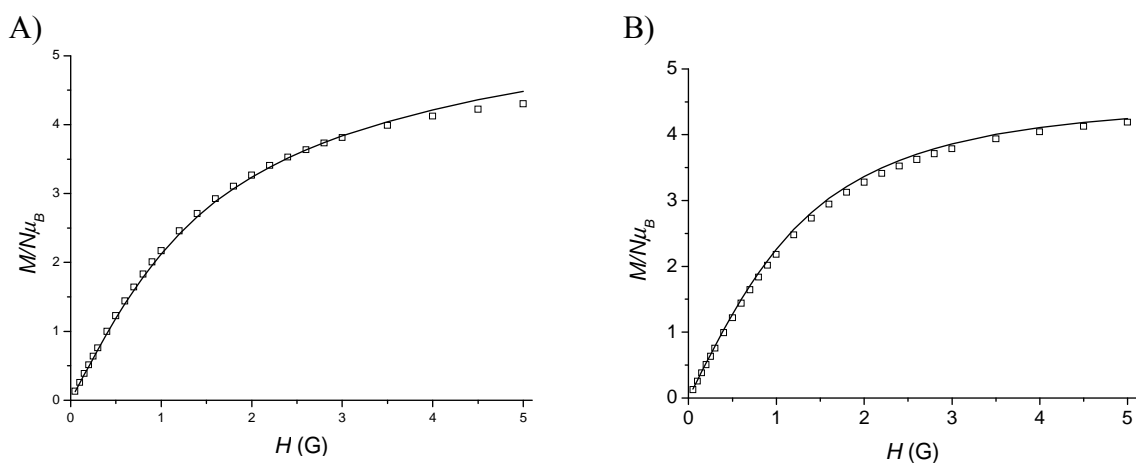


Fig. S3. A) Plot of M/μ_B vs H at 2 K for 1·0.25H₂O·2.5MeOH: □: experimental results; solid line: best fit. B) Plot of M/μ_B vs H at 2 K for 2·3.25H₂O·0.5MeOH: □: experimental results; solid line: best fit.