

A chelation enhanced selective fluorescence sensing of Hg²⁺ by a simple quinoline substituted tripodal amide receptor

B. Nisar Ahamed and Pradyut Ghosh*

Department of Inorganic Chemistry, Indian Association for the Cultivation of Science,
2A & 2B Raja S. C. Mullick Road, Kolkata 700032, India.

E-mail: icpg@iacs.res.in

Table of Contents

Contents	Page No
1. ¹ H- NMR spectrum of 1 in CDCl ₃	1
2. ¹³ C- NMR spectrum of 1 in CDCl ₃	2
3. HRMS (ESI +ve) spectrum of 1	3
4. ¹ H- NMR spectrum of 2 in CDCl ₃	4
5. ¹³ C- NMR spectrum of 2 in CDCl ₃	5
6. HRMS (ESI +ve) spectrum of 2	6
7. ¹ H- NMR spectrum of 3 in DMSO- <i>d</i> ₆	7
8. ¹³ C- NMR spectrum of 3 in DMSO- <i>d</i> ₆	8
9. HRMS (ESI -ve) spectrum of 3	9
10. IR-spectrum of 1	10
11. IR-spectrum of 3	11

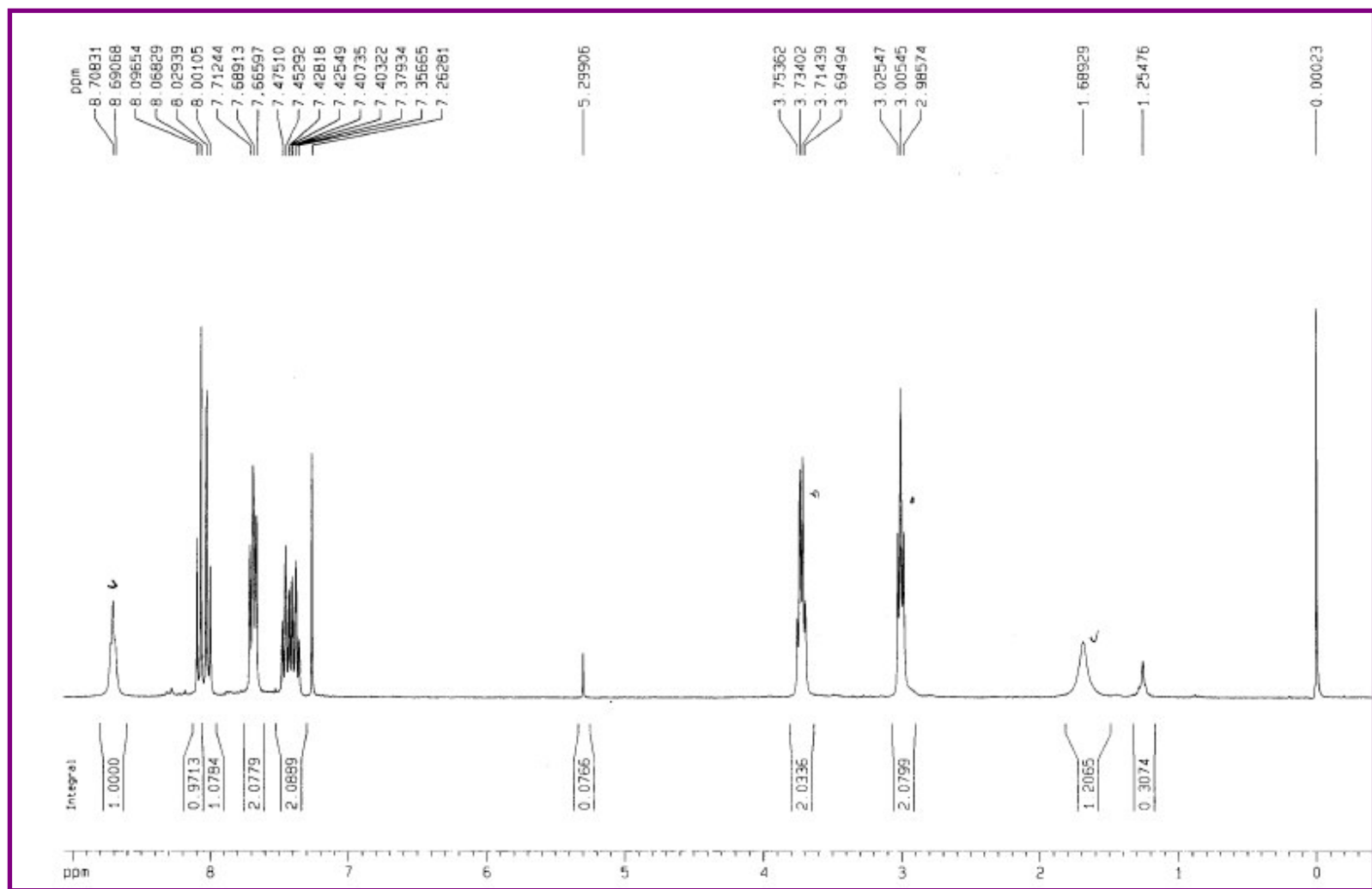


Figure S1. ^1H -NMR spectrum of **1** in CDCl_3

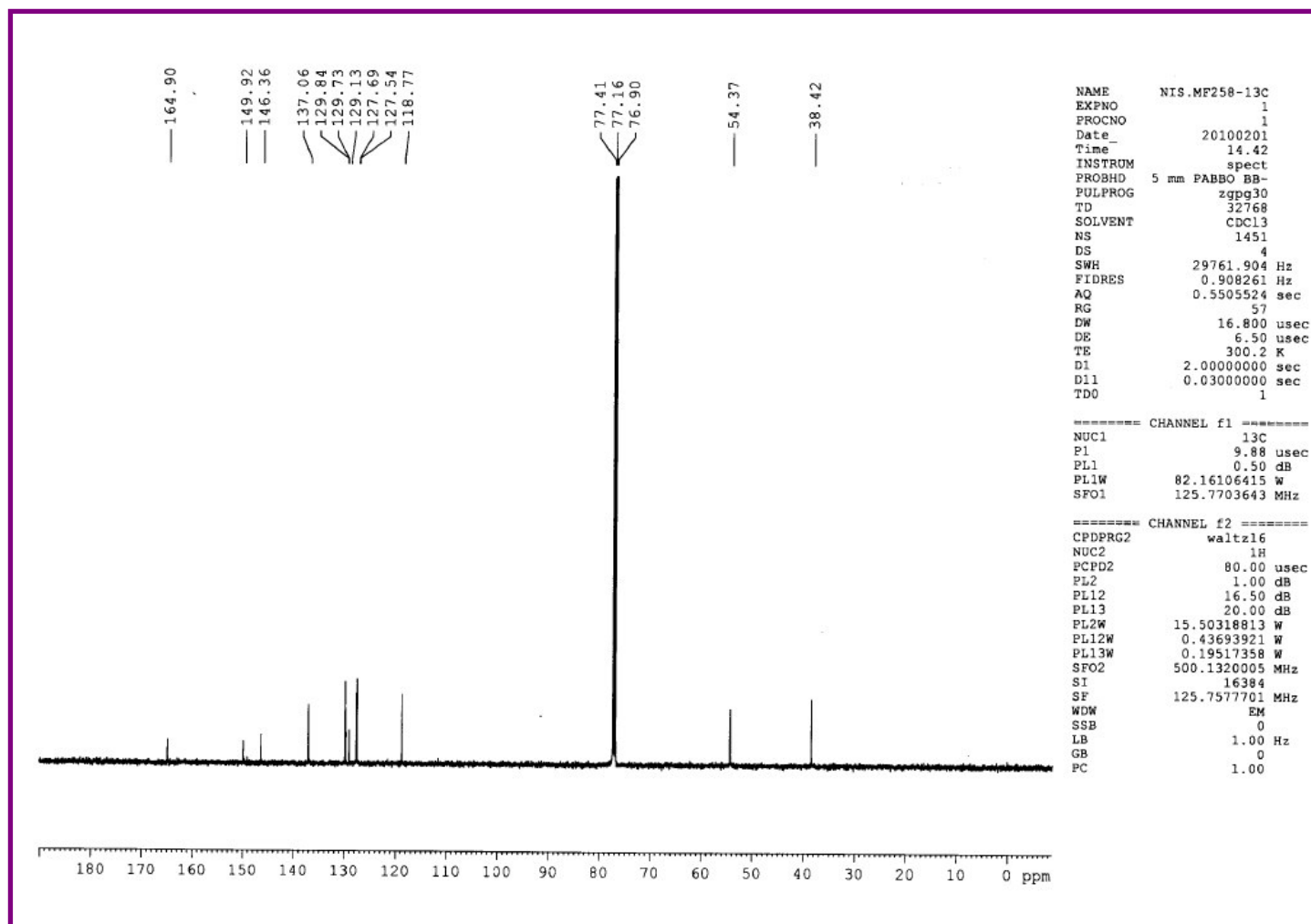


Figure S2. ^{13}C -NMR spectrum of **1** in CDCl_3

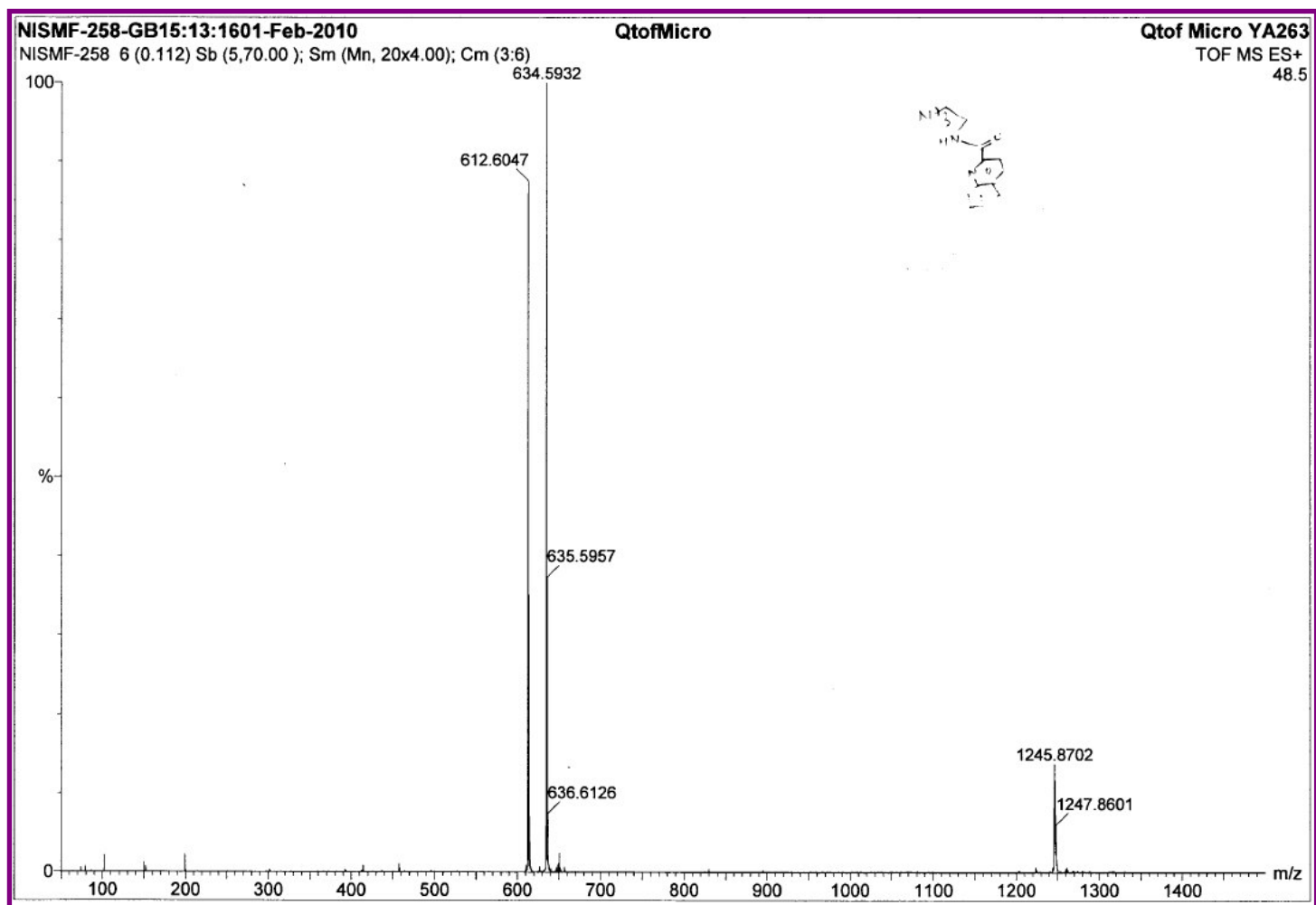


Figure S3. HRMS (ESI + ve) spectrum of **1**

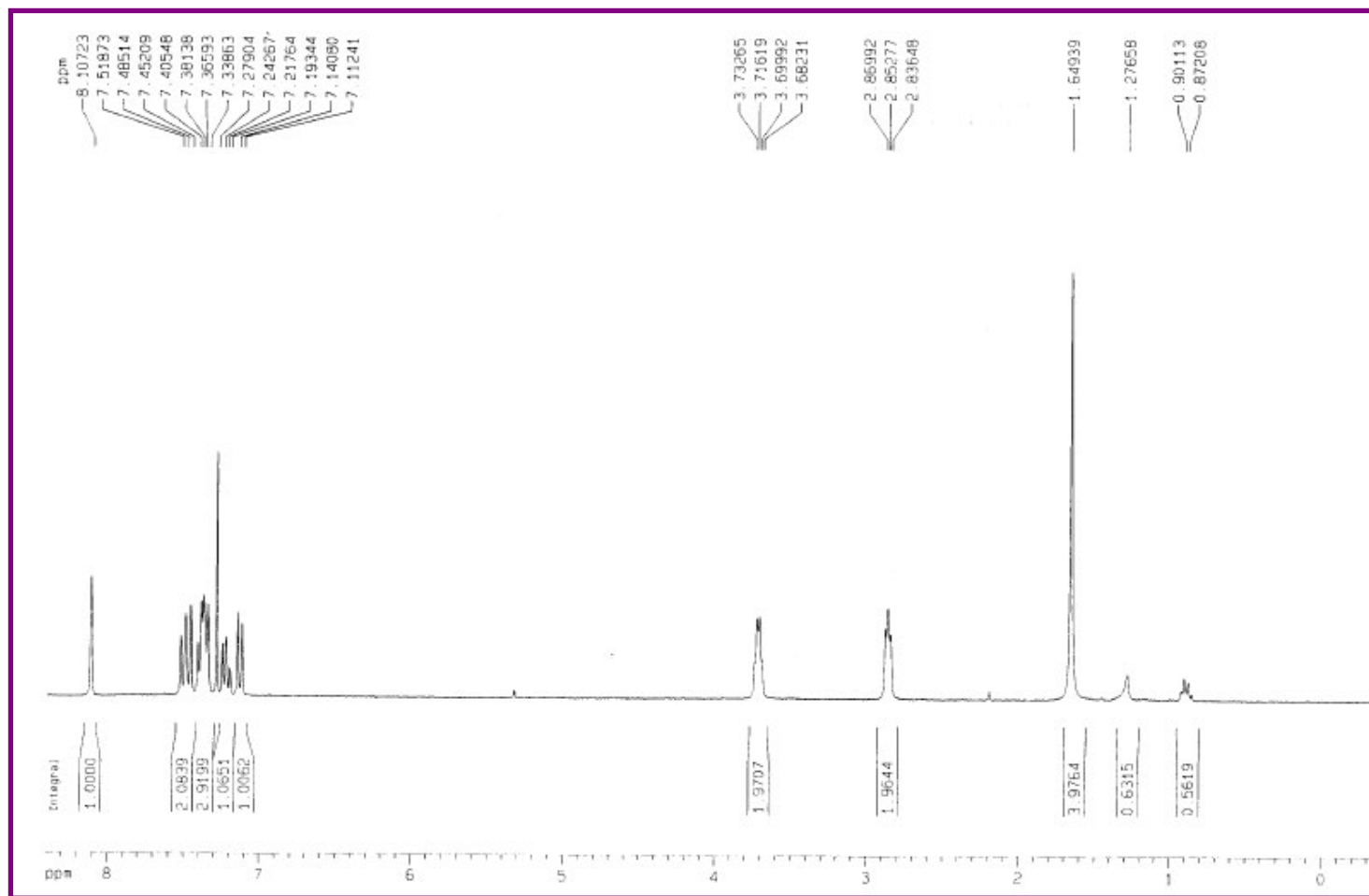


Figure S4. ¹H- NMR spectrum of **2** in CDCl₃

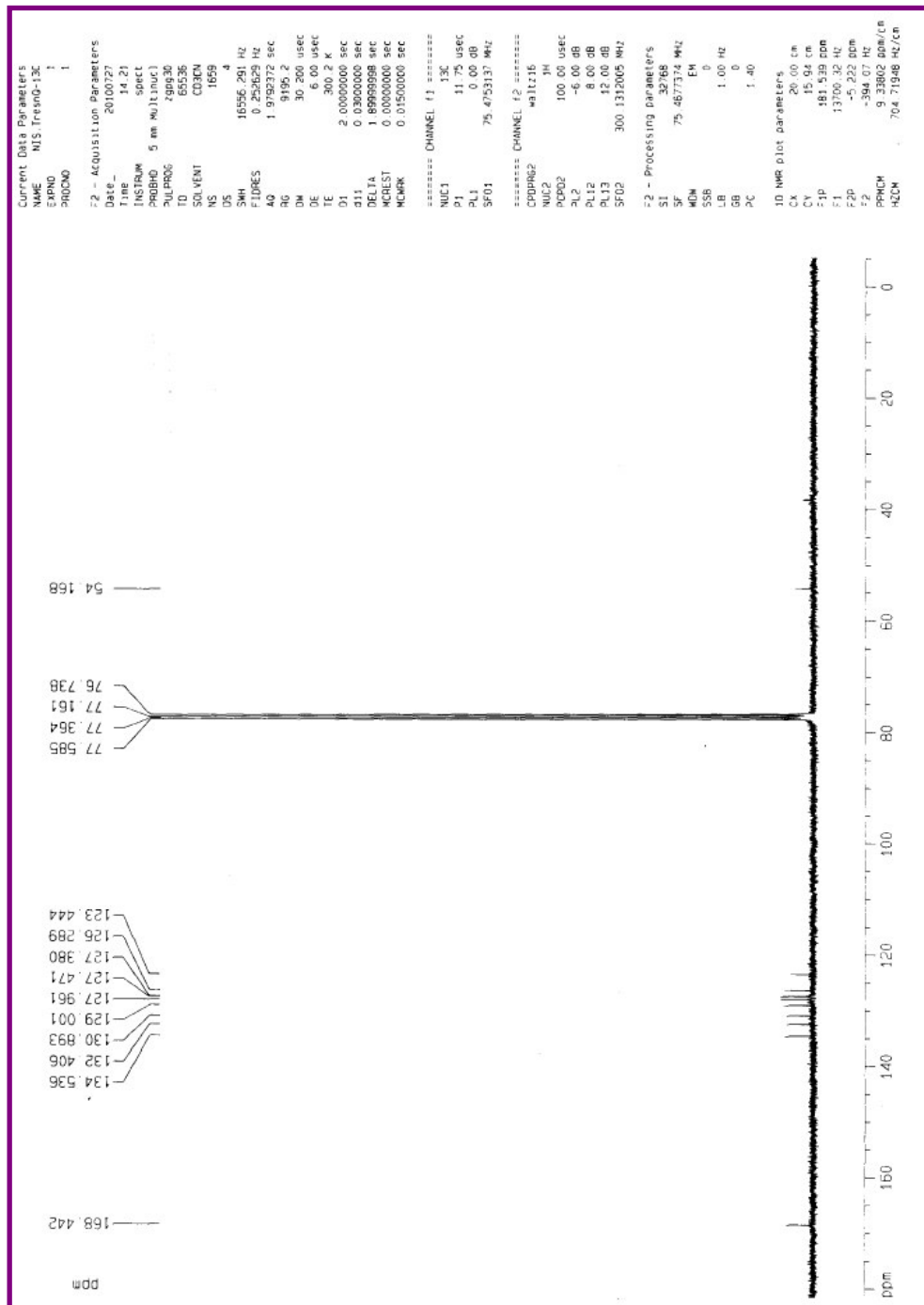


Figure S5. ¹³C-NMR spectrum of 2 in CDCl₃

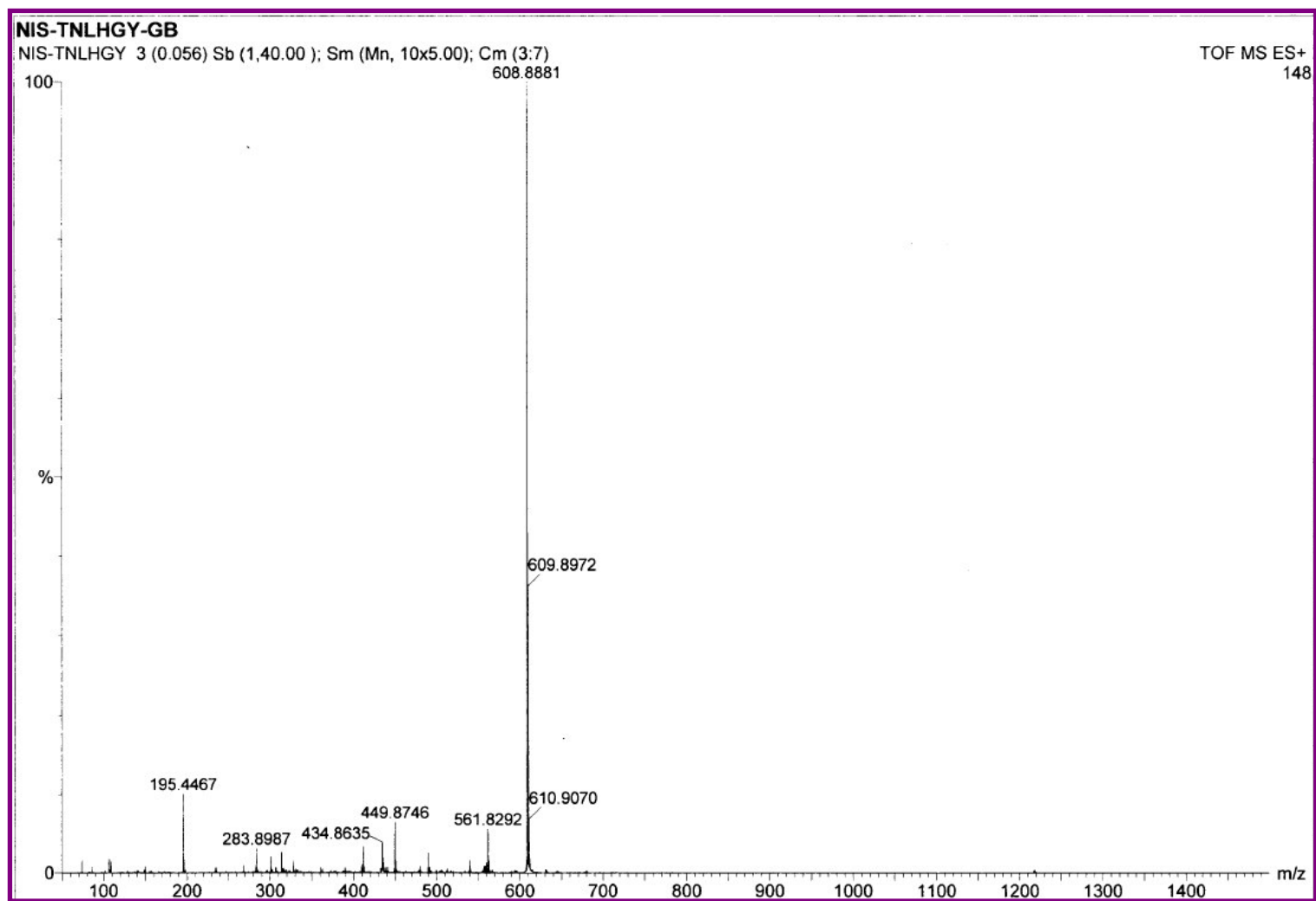


Figure S6. HRMS (ESI +ve) spectrum of **2**.

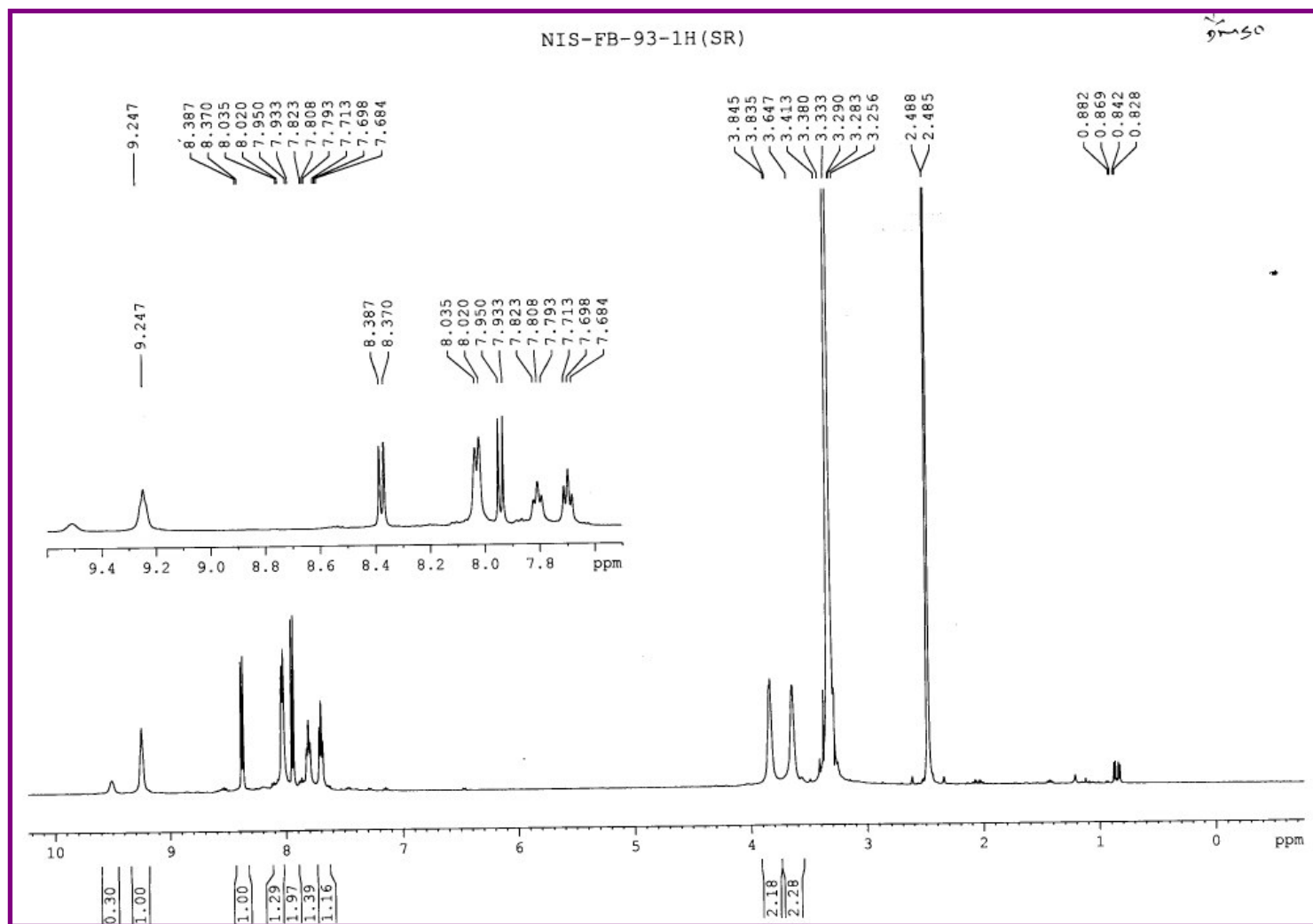


Figure S7. $^1\text{H-NMR}$ spectrum of **3** in $\text{DMSO-}d_6$

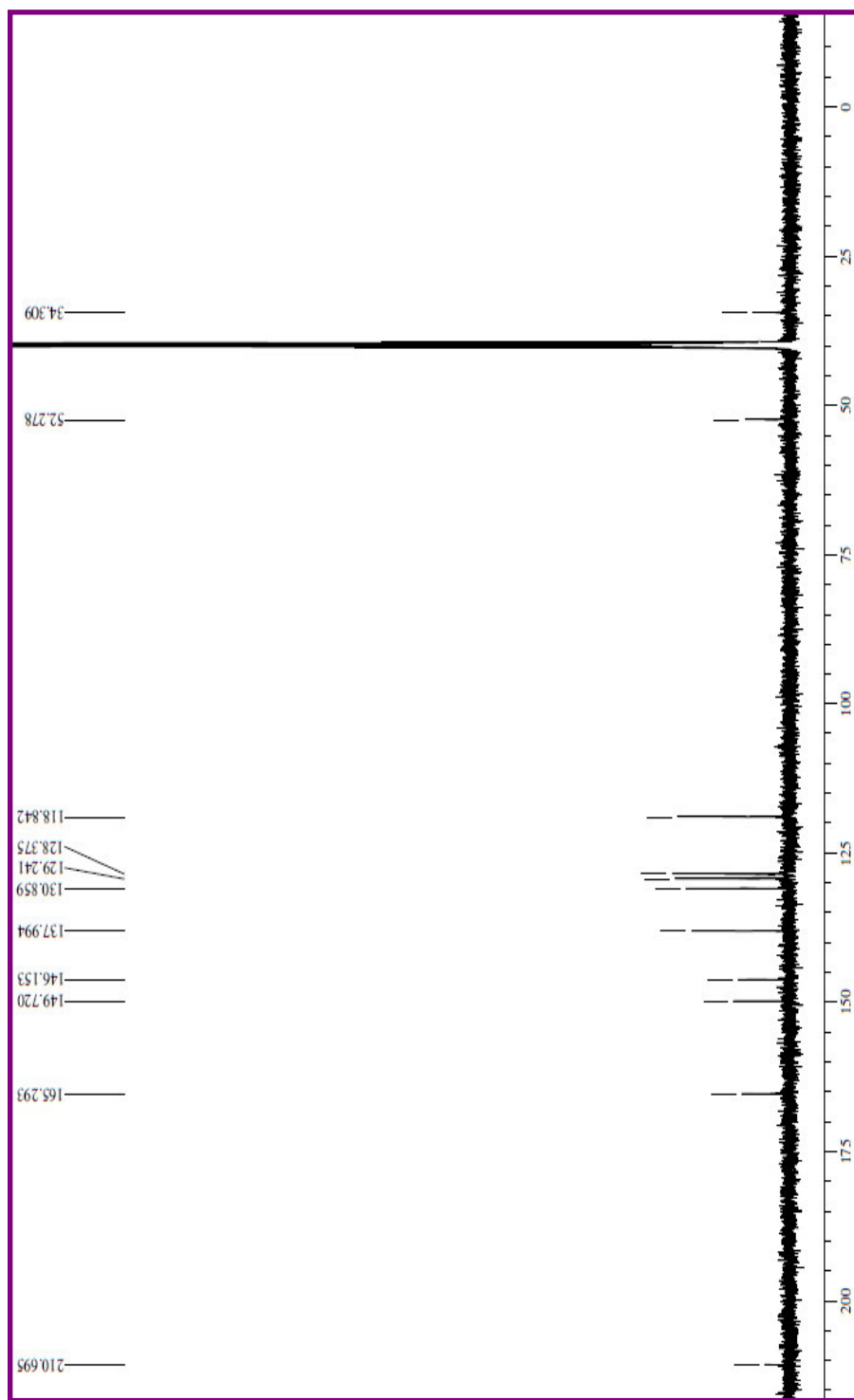


Figure S8. ^{13}C -NMR spectrum of **3** in $\text{DMSO-}d_6$

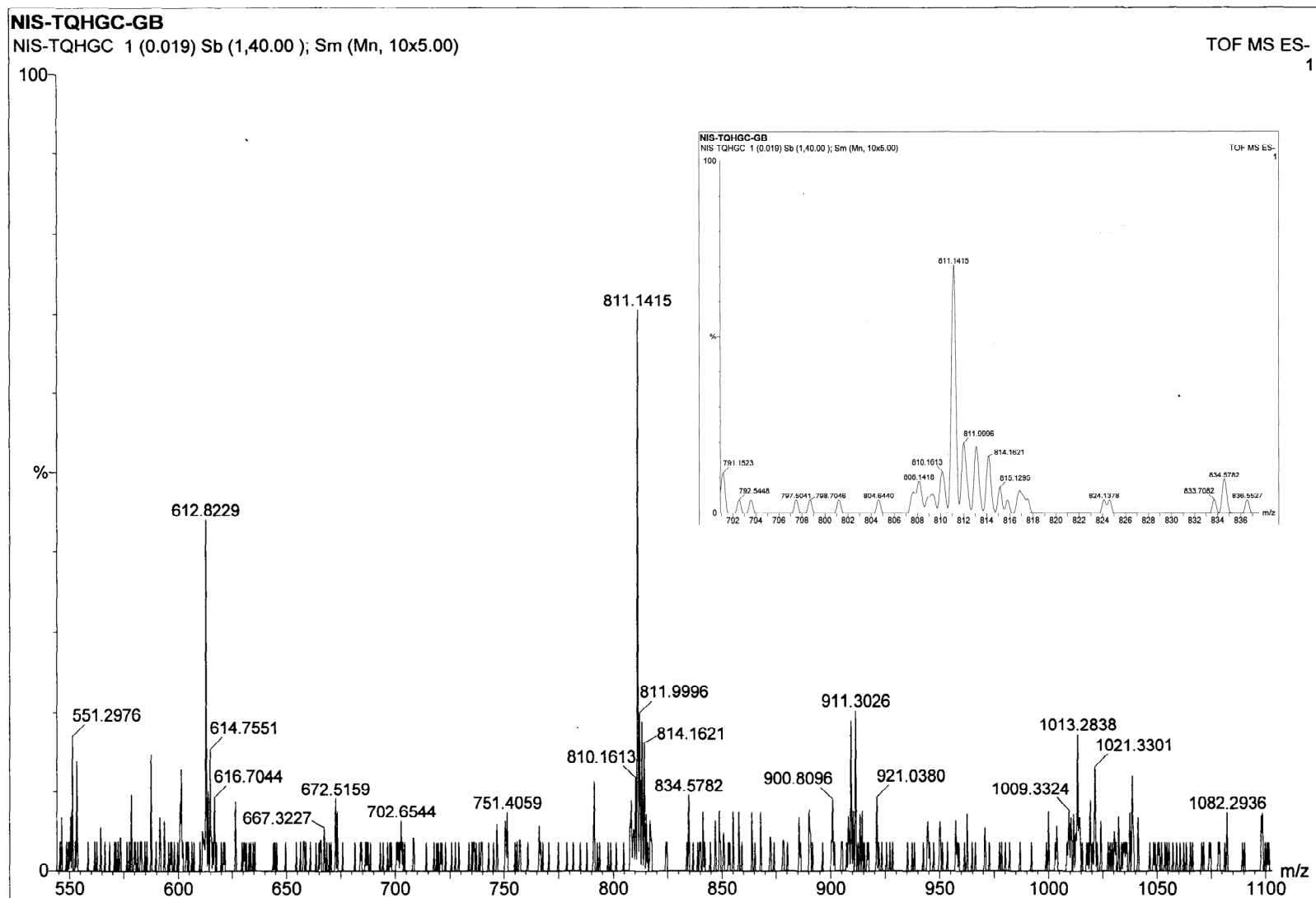


Figure S9. HRMS (ESI -ve) spectrum of **3**, Inset shows the expanded spectrum of **3**.

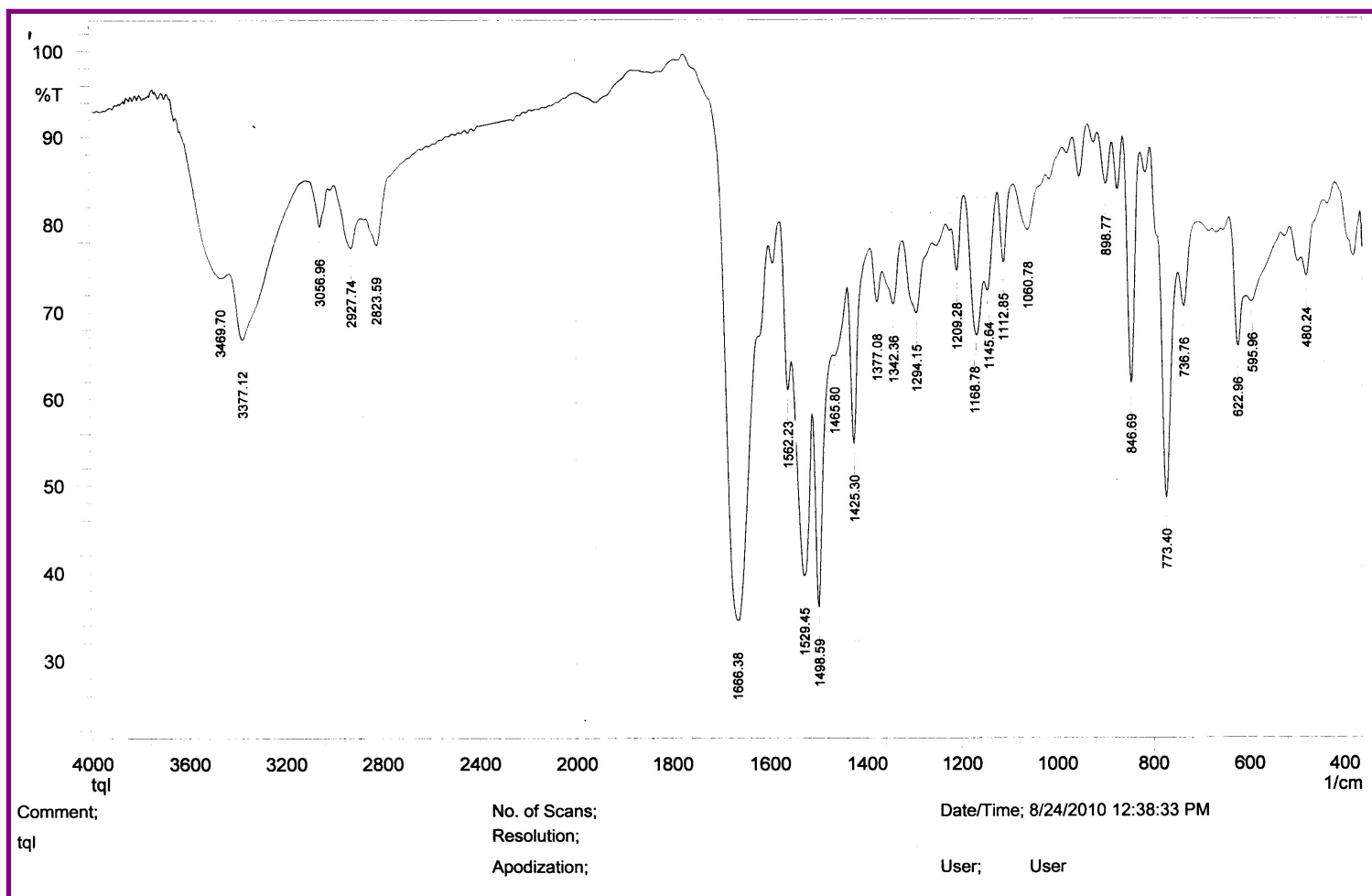


Figure S10. Infra red spectrum of 1.

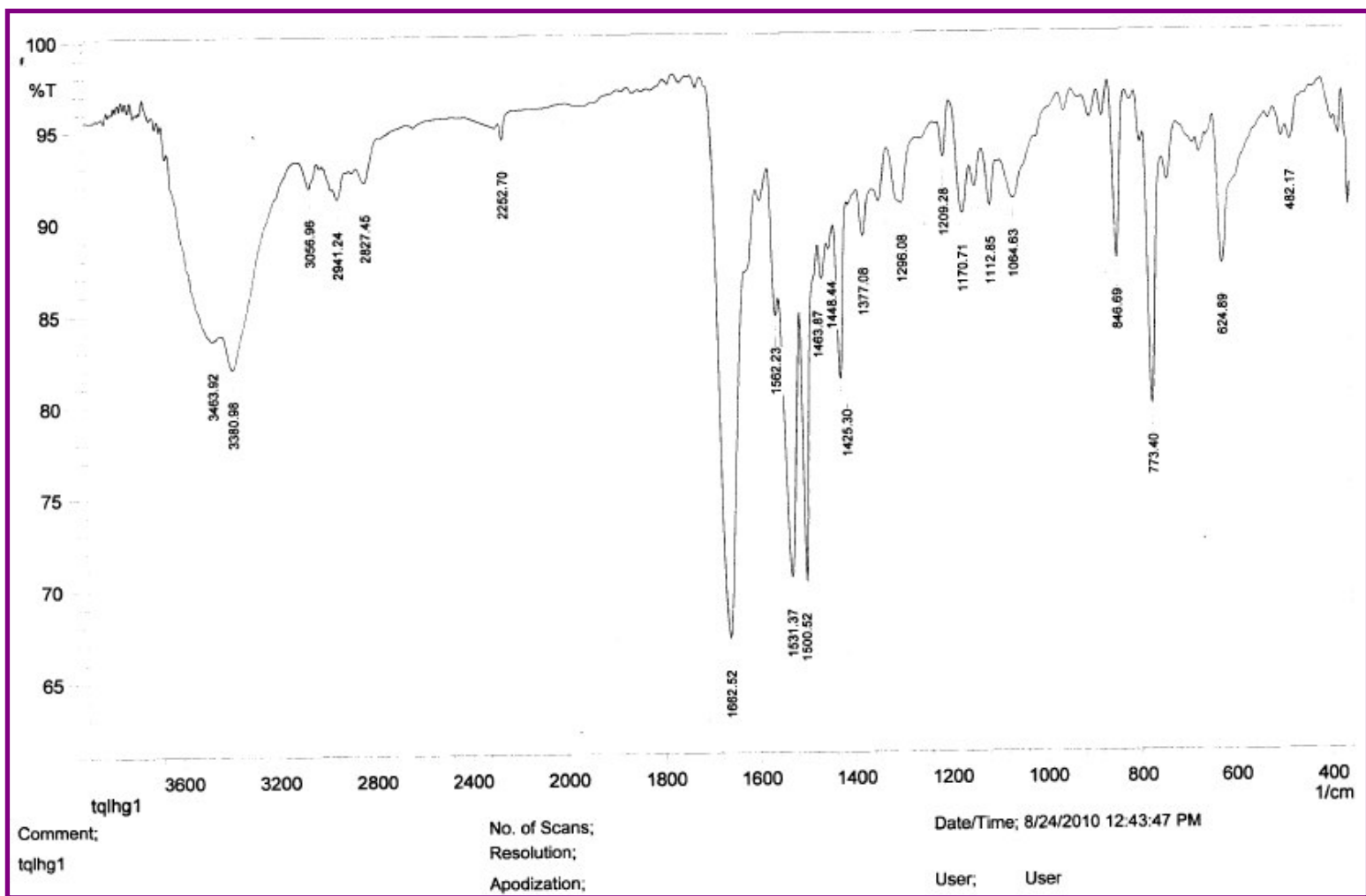


Figure S11. Infra-red spectrum of 3.