

Supporting Information for

Synthesis, characterization and structural transformation of a discrete tetragonal metalloprism

Jing-Yun Wu,^{*a} Ming-Shiou Zhong,^a Ming-Hsi Chiang,^b Meng-Rong Tsai^a and Long-Li Lai^a

^aDepartment of Applied Chemistry, National Chi Nan University, Nantou 545, Taiwan. E-mail:

jyunwu@ncnu.edu.tw

^bInstitute of Chemistry, Academia Sinica, Taipei 115, Taiwan.

Contents:

- Fig. S1** ¹H (upper) and ¹³C{¹H} NMR (lower) spectra of dpma in DMSO-*d*₆ at room temperature.
- Fig. S2** Fast atom bombardment (FAB) mass spectrum of dpma. Inset figure shows the result of high resolution FAB mass data of dpma.
- Fig. S3** Negative (upper) and positive (lower) electrospray ionization mass spectra (ESI-MS) of M₂L₄ metalloprism [(NO₃)⁻]₂{Cu₂(μ-Hdpma)₄}(NO₃)₂](NO₃)₅ (**1**).
- Fig. S4** Space-filling model representation of the two-dimensional sheet structure of **2**, showing the presence of grooves.
- Fig. S5** Powder X-ray diffraction (PXRD) patterns of **1**. (a) A freshly ground sample at room temperature. (b) Simulated from the single-crystal data.
- Fig. S6** Powder X-ray diffraction (PXRD) patterns of **2**. (a) A freshly ground sample at room temperature. (b) Simulated from the single-crystal data.
- Fig. S7** Powder X-ray diffraction (PXRD) patterns of **3**. (a) A freshly ground sample at room temperature. (b) Simulated from the single-crystal data.

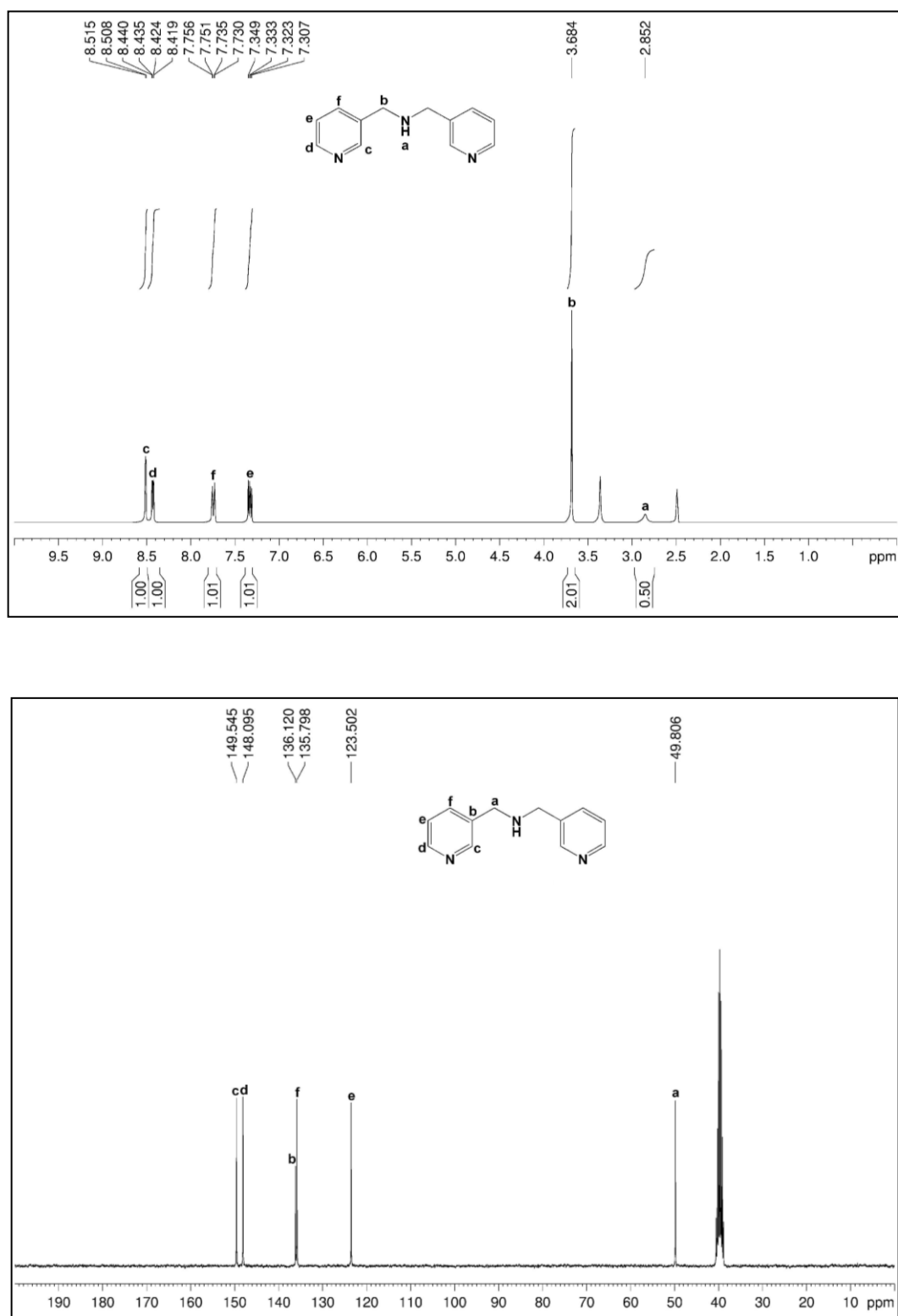


Fig. S1 ¹H NMR (upper) and ¹³C{¹H} (lower) spectra of dpma in DMSO-*d*₆ at room temperature.

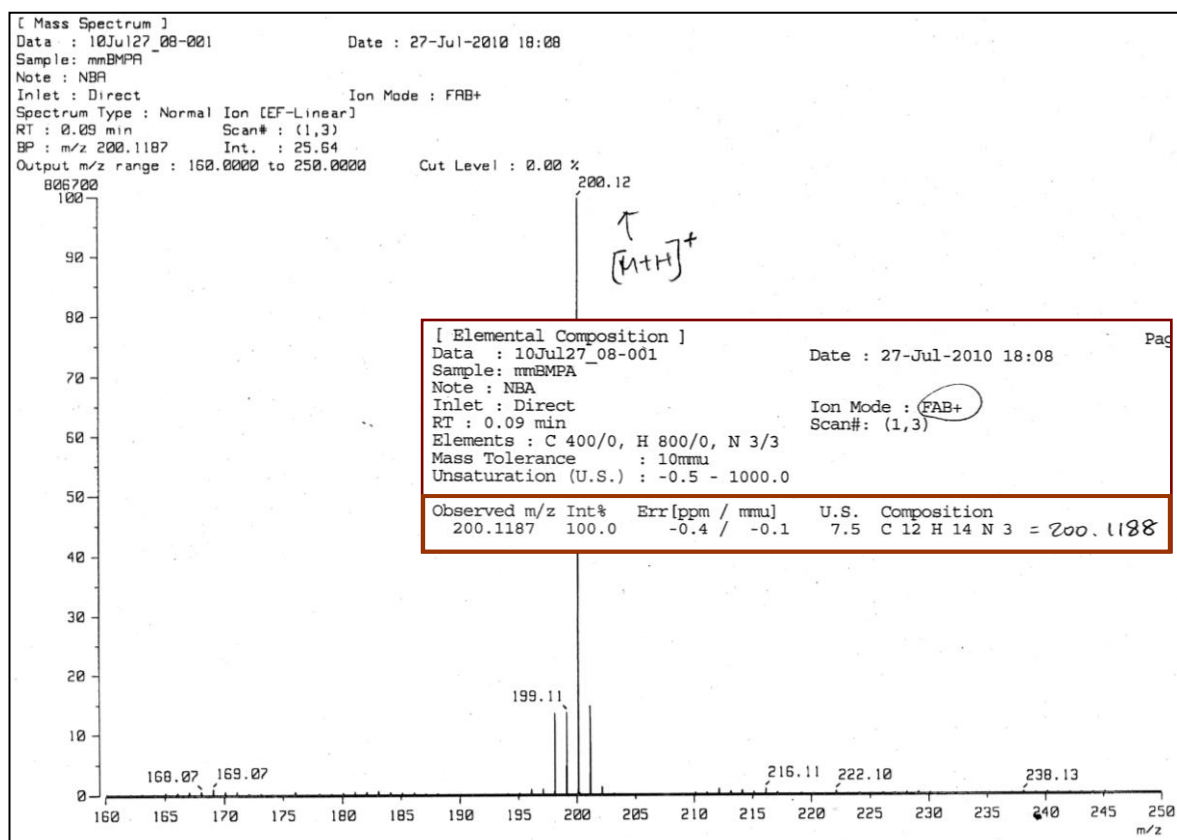


Fig. S2 Fast atom bombardment (FAB) mass spectrum of dpma. Inserted figure shows the result of high resolution FAB mass data of dpma.

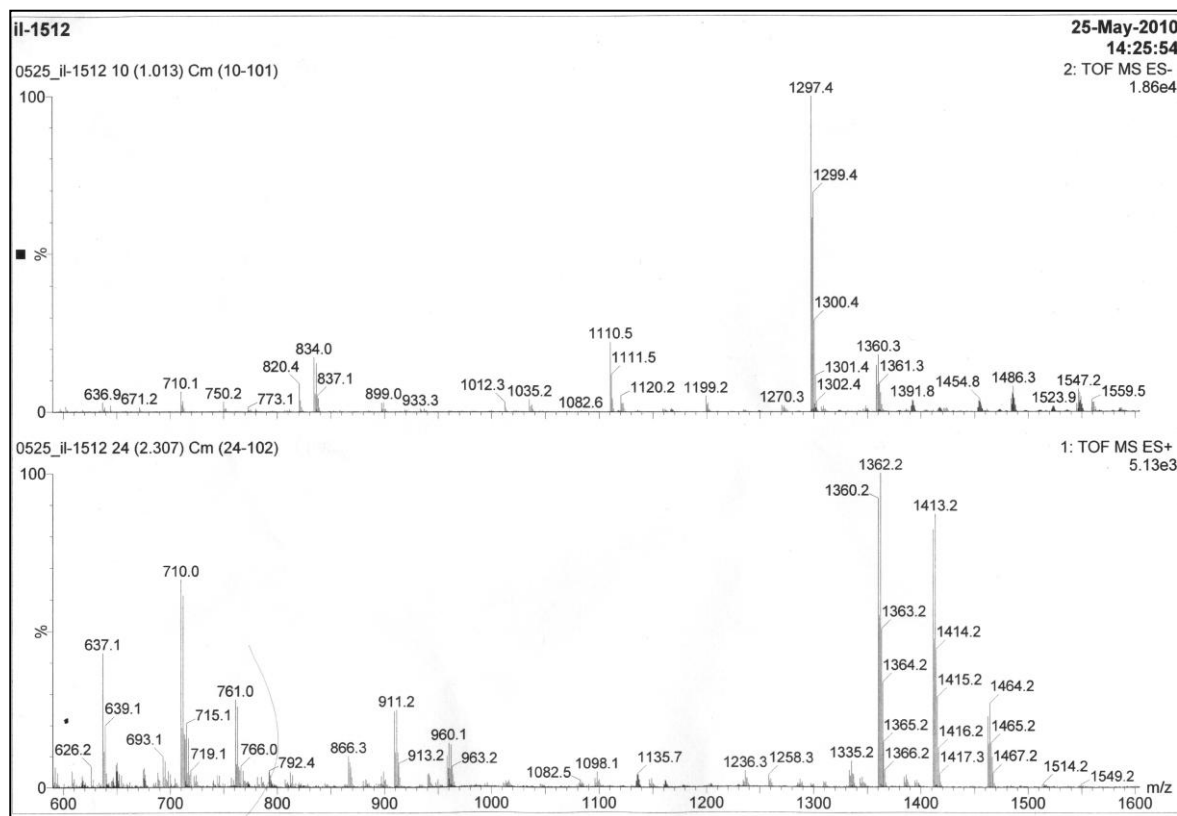


Fig. S3 Negative (upper) and positive (lower) electrospray ionization mass spectra (ESI-MS) of M_2L_4 metalloprism $[(NO_3)^- \{ Cu_2(\mu-Hdpma)_4 \} (NO_3)_2] (NO_3)_5$ (**1**).

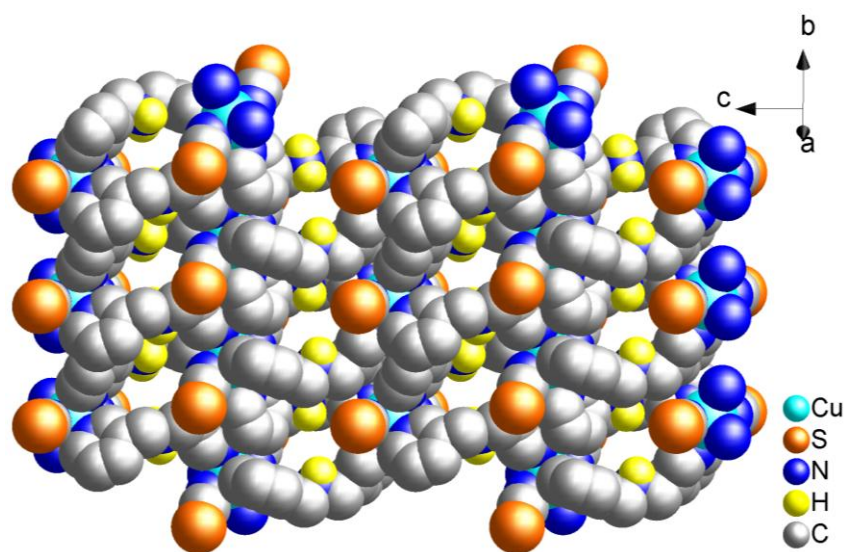


Fig. S4 Space-filling model representation of the two-dimensional sheet structure of **2**, showing the presence of grooves.

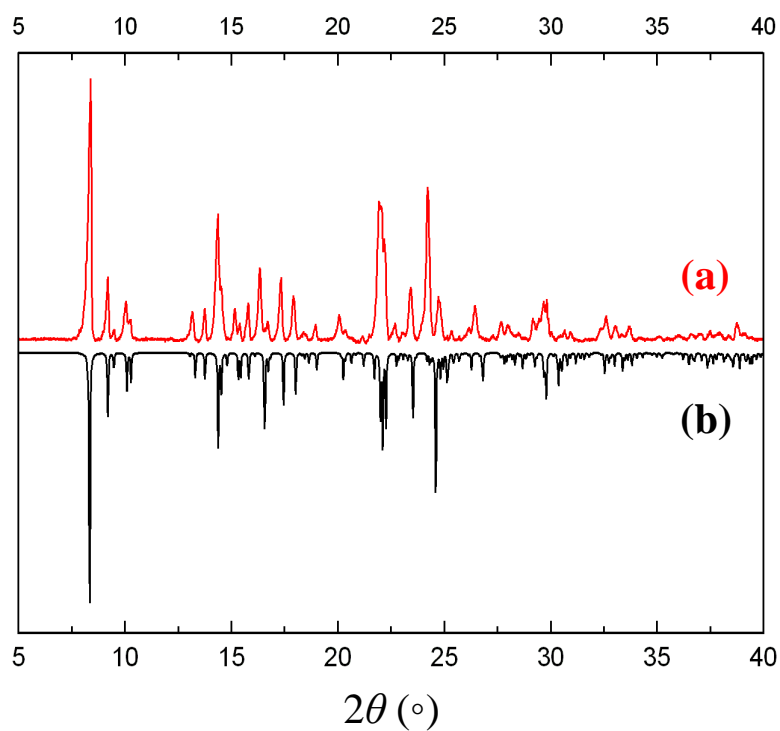


Fig. S5 Powder X-ray diffraction (PXRD) patterns of **1**. (a) A freshly grounded sample at room temperature. (b) Simulated from the single-crystal data.

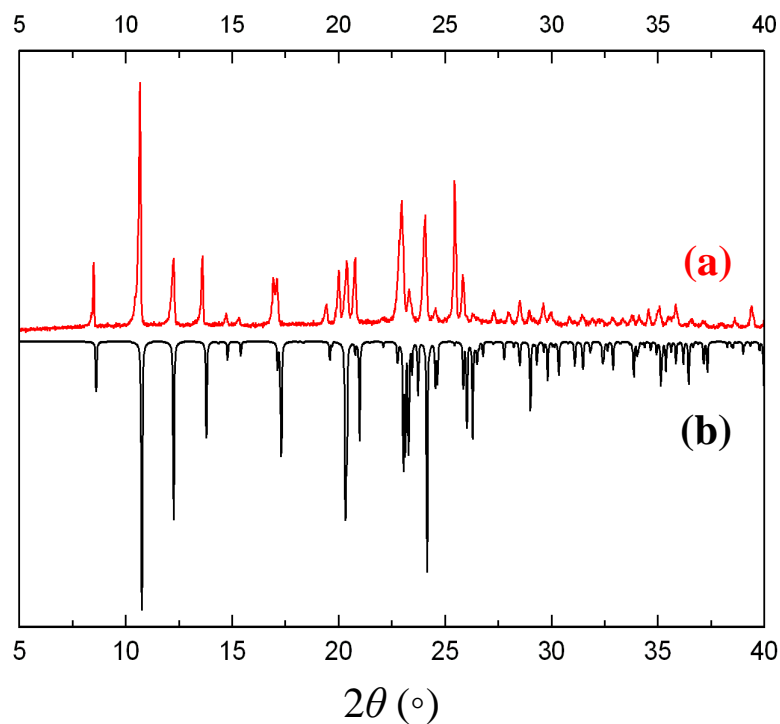


Fig. S6 Powder X-ray diffraction (PXRD) patterns of **2**. (a) A freshly grounded sample at room temperature. (b) Simulated from the single-crystal data.

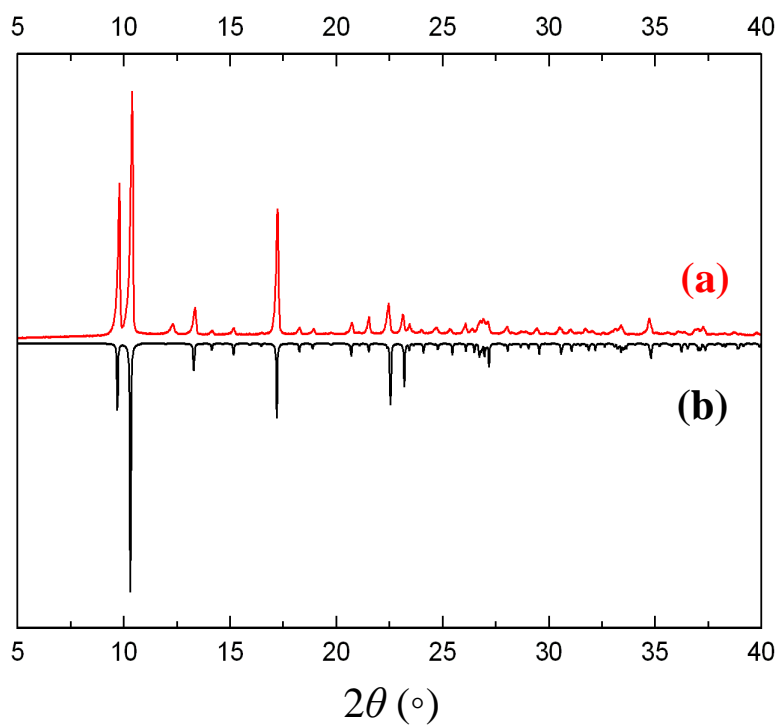


Fig. S7 Powder X-ray diffraction (PXRD) patterns of **3**. (a) A freshly grounded sample at room temperature. (b) Simulated from the single-crystal data.