

Supplementary Information

**Luminescence quenching in self-assembled
adducts of $[\text{Ru}(\text{dpp})_3]^{2+}$ complexes and
CdTe nanocrystals**

Matteo Amelia,^a Marc Font Molins,^a and Alberto Credi^{*a}

^a *Photochemical Nanosciences Laboratory, Dipartimento di Chimica “G. Ciamician”, Università di Bologna, via Selmi 2, 40126 Bologna, Italy. Fax: +39 051 2099456; Tel: +39 051 2099540; E-mail: alberto.credi@unibo.it*

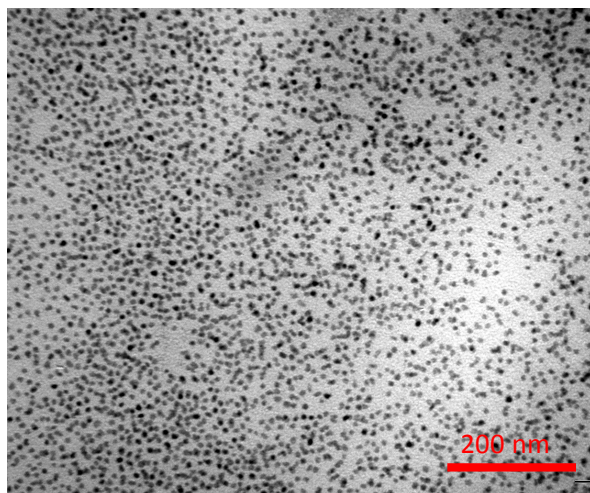


Figure S1. TEM picture of the CdTe quantum dots.

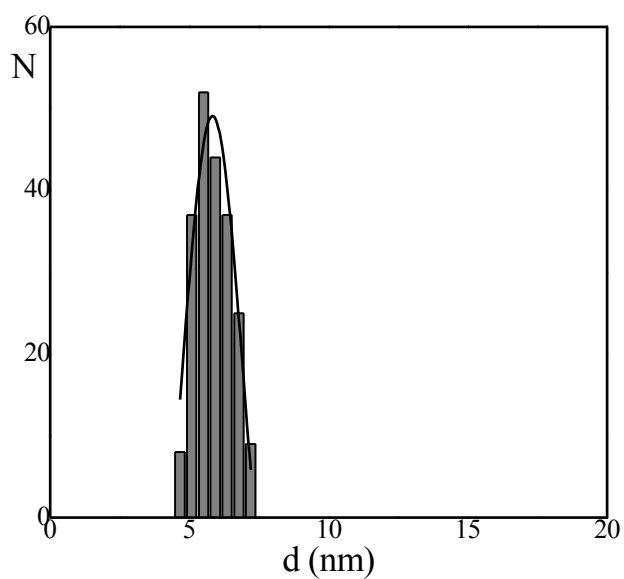


Figure S2. Size distribution analysis of the CdTe sample. The distribution has been calculated over about 200 nanocrystals in the previous image (Figure S1).