

Electronic Supplementary Information

Unprecedented heptacopper(II) cluster with body-centred anti-prismatic topology. Structure, magnetism and density functional study

Himanshu Arora, Joan Cano, Francesc Lloret and Rabindranath Mukherjee*

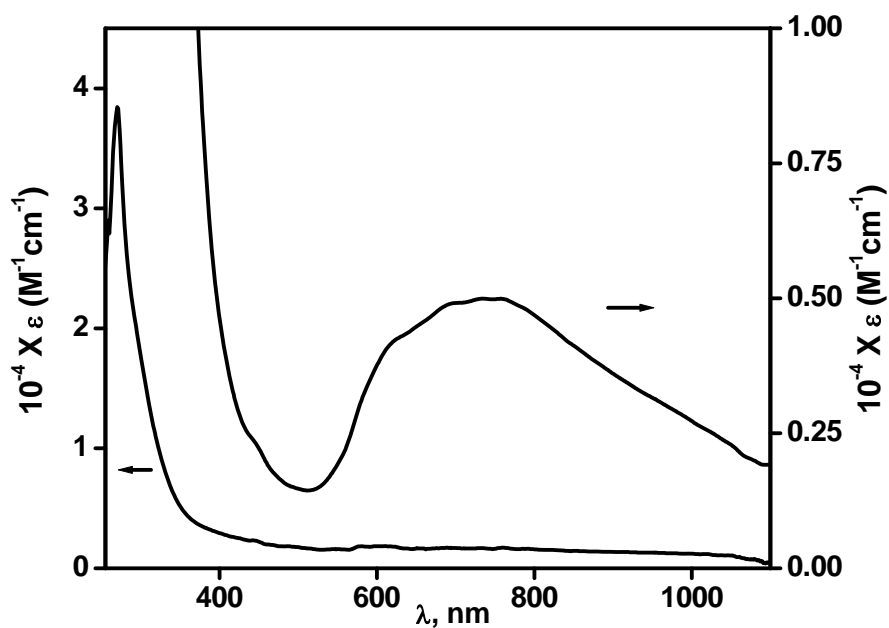


Fig. S1. UV-VIS spectrum (in DMF) of $[\text{Cu}^{\text{II}}_7(\text{L})_4(\mu_3\text{-OH})_2(\text{H}_2\text{O})_2(\text{DMF})_2][\text{ClO}_4]_4 \cdot 4\text{H}_2\text{O}$ (**1**).

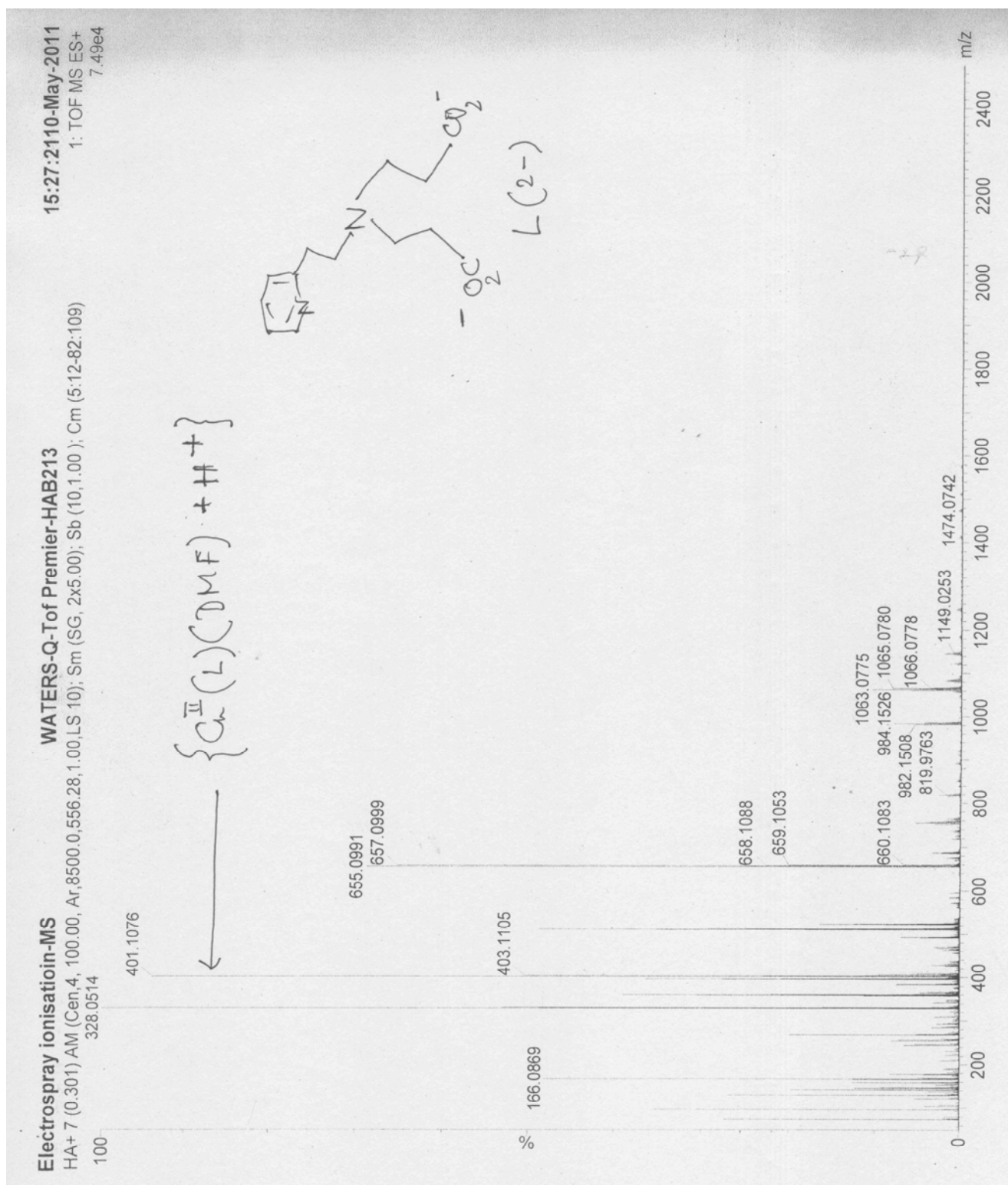


Fig. S2. ESI-MS spectrum (in CH_3CN) of $[Cu^{II}_7(L)_4(\mu-OH)_2(H_2O)_2(DMF)_2]-[ClO_4]_4 \cdot 4H_2O$ (**1**).

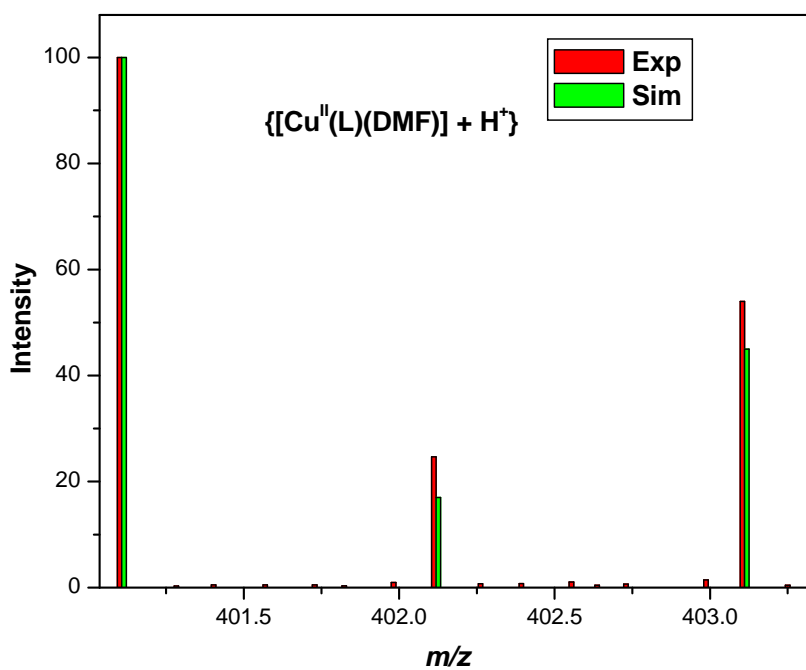


Fig. S3. Experimental and simulated ESI-mass peak (in CH₃CN) of [Cu^{II}₇(L)₄(μ-OH)₂(H₂O)₂(DMF)₂][ClO₄]₄ · 4H₂O (**1**) at m/z = 401.11.