

Three novel Bi(III) complexes with in situ generated anilate ligands: Unusual oxidation of cyclohexanedione to dihydroxy benzoquinone

Hui Gao, Xian-Ming Zhang*

School of Chemistry & Material Science, Shanxi Normal University, Linfen, Shanxi 041004, China. E-mail: zhangxm@dns.sxnu.edu.cn

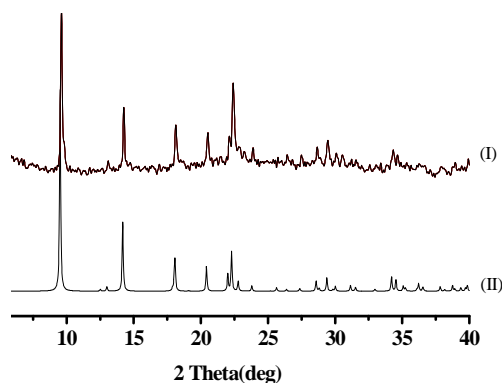


Fig. S1. Simulated (I) and experimental (II) XRPD patterns for **1**.

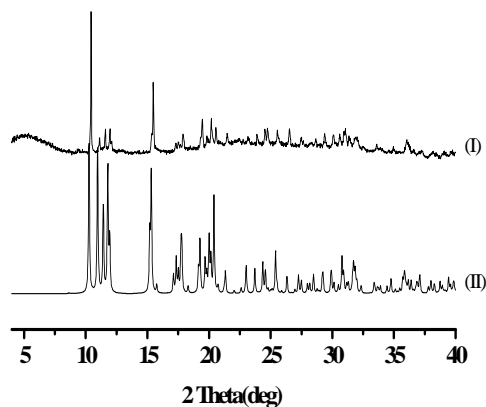


Fig. S2. Simulated (I) and experimental (II) XRPD patterns for **2**.

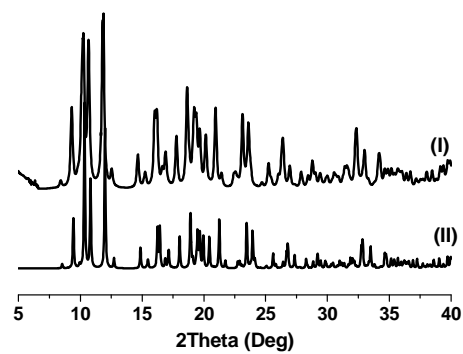


Fig. S3. Simulated (I) and experimental (II) XRPD patterns for **3**.

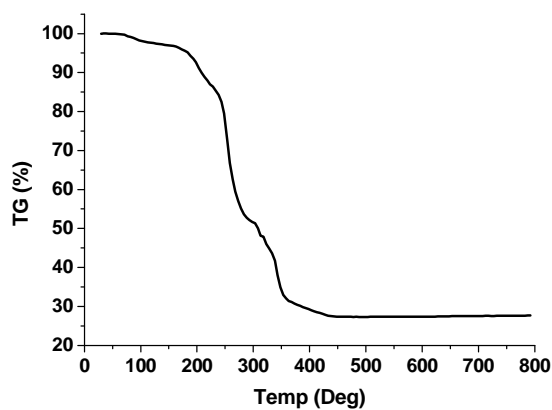


Fig. S4. The TG curve of **1** in air.

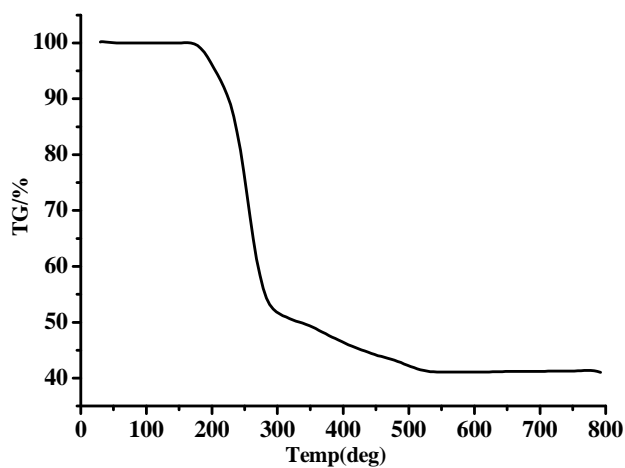


Fig. S5. The TG curve of **2** in air.

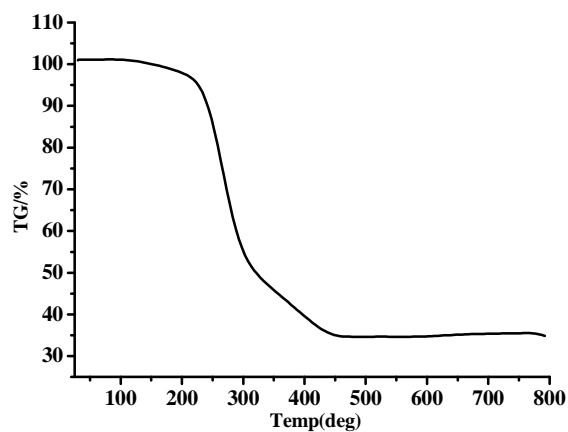


Fig. S6. The TG curve of **3** in air.

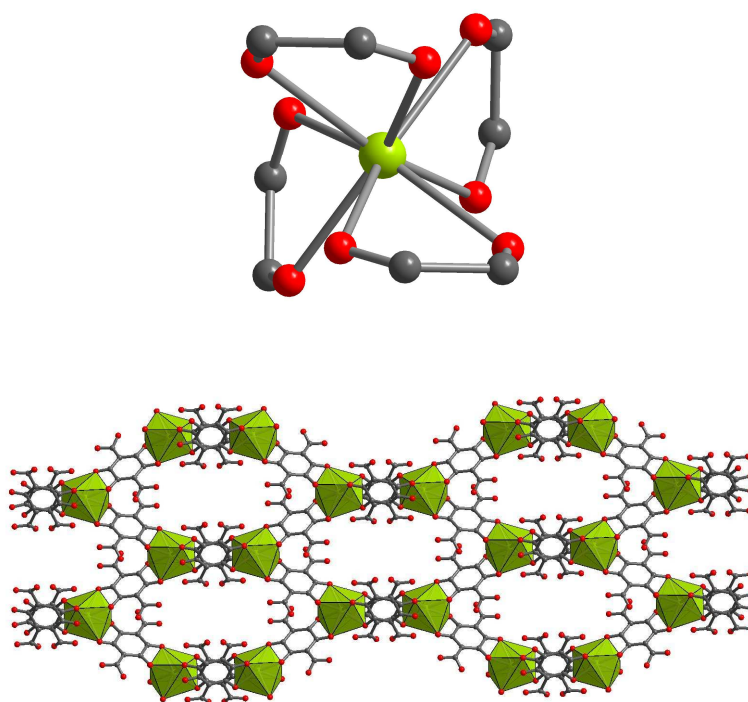


Figure S7 Coordination environment of Bi emphasizing four fold inversion symmetry (top) and View of 3-D structure along *a*-axis direction (bottom) in **1**.

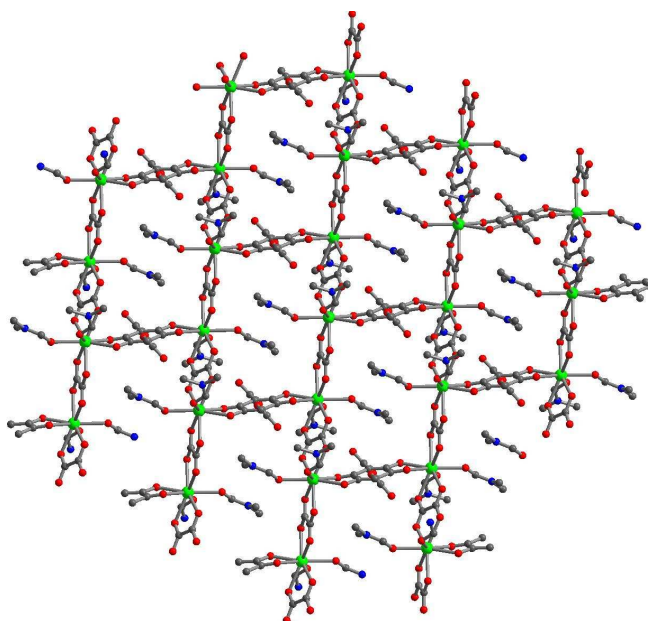


Figure S8 View of layered brick-wall structure of **2**.

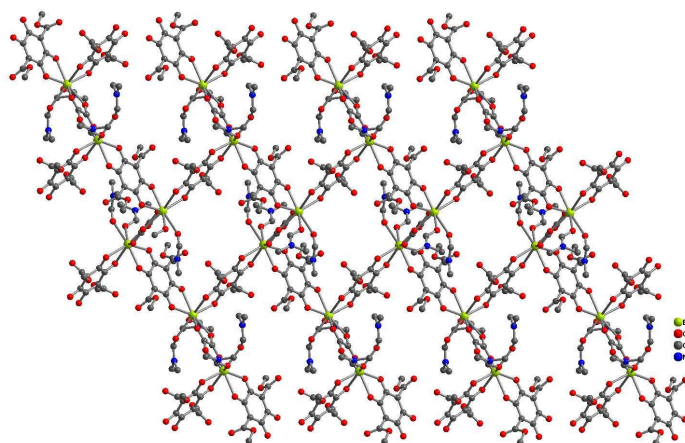


Figure S9 View of layered herringbone structure of **3**.