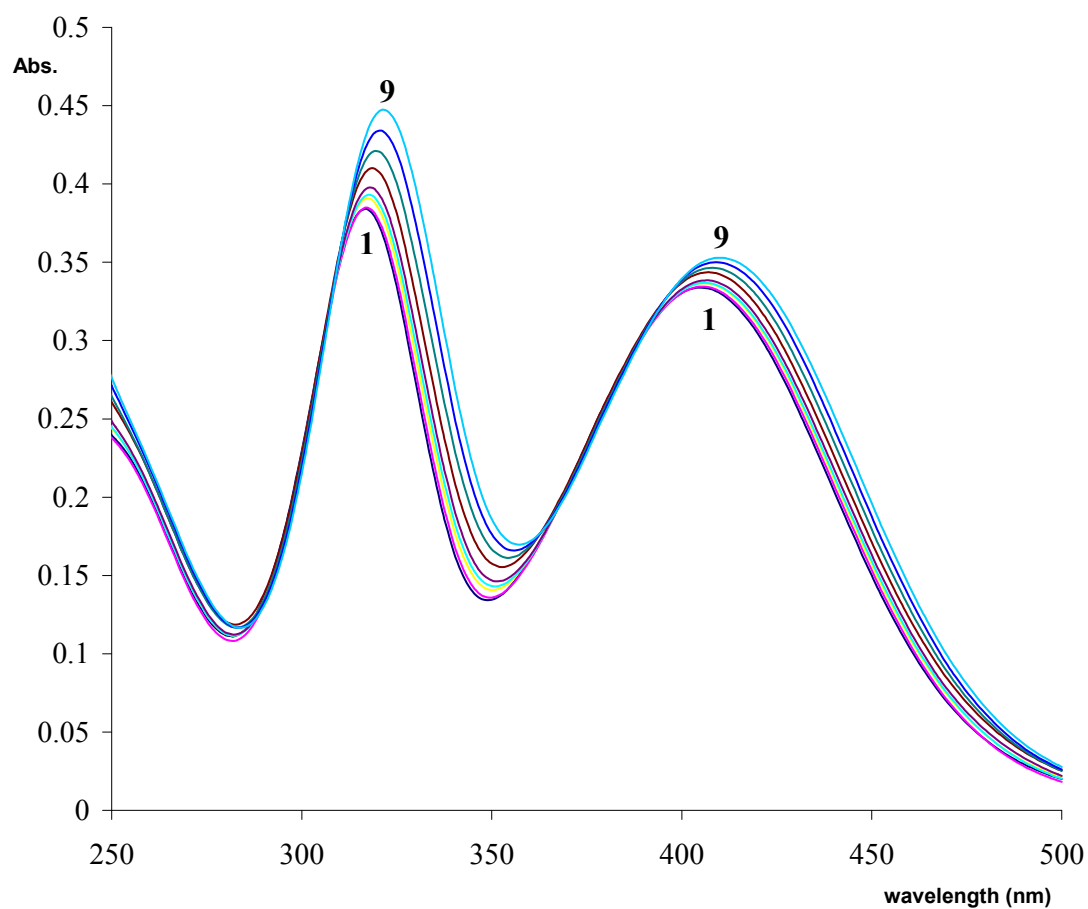


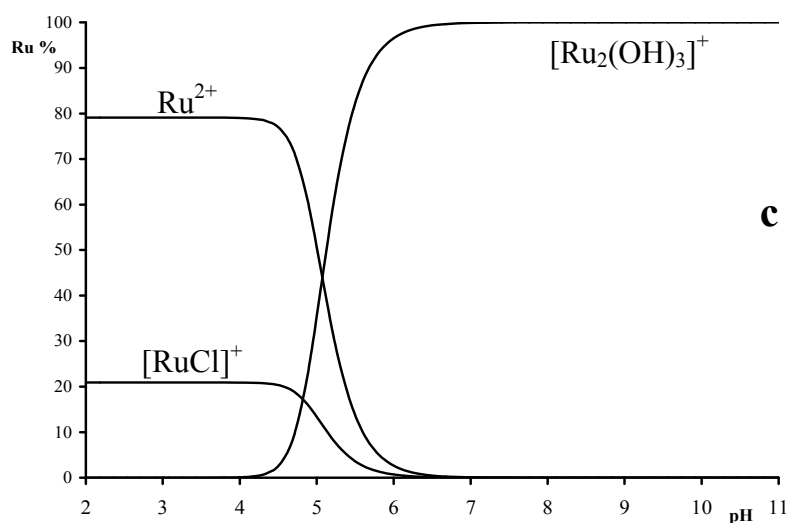
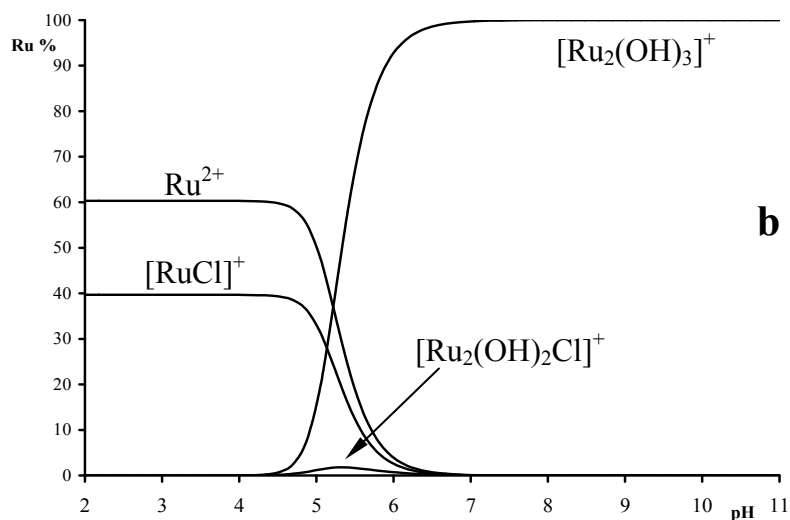
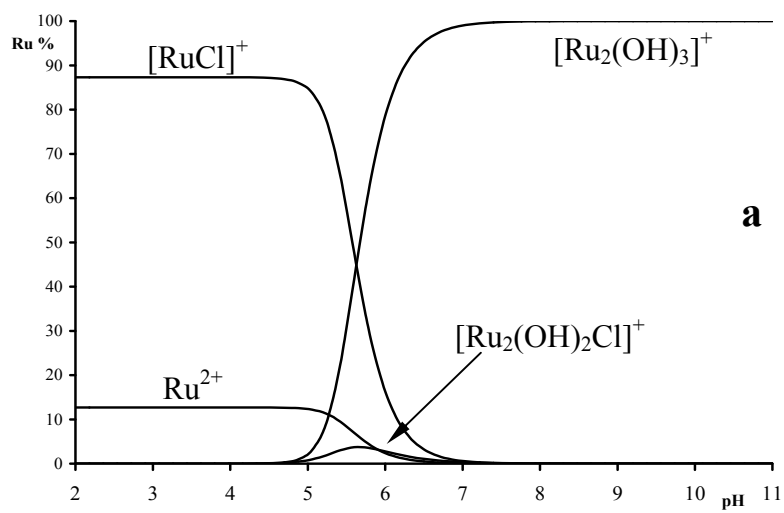
### Supplementary material (S1)

Representative measured and simulated ESI-TOF-MS spectra of the various complexes.



**Supplementary material (S2)**

UV-VIS spectra registered in the [Ru(η<sup>6</sup>-p-cym)(H<sub>2</sub>O)<sub>3</sub>]<sup>2+</sup> - Cl<sup>-</sup> system at pH = 1.40, c<sub>Ru</sub> = 0.54 mM. Ru:Cl 1:0 (1), 1:1 (2), 1:2 (3), 1:3 (4), 1:4 (5), 1:6 (6), 1:10 (7), 1:15 (8), 1:20 (9)



**Supplementary material (S3)**

Concentration distribution curves calculated for the  $[\text{Ru}(\eta^6\text{-}p\text{-cym})(\text{H}_2\text{O})_3]^{2+} - \text{Cl}^-$  system at  $c_{\text{Ru}} = 1.00 \mu\text{M}$  and  $c_{\text{Cl}^-} = 104 \text{ mM}$  (a),  $c_{\text{Cl}^-} = 23 \text{ mM}$  (b) and  $c_{\text{Cl}^-} = 4 \text{ mM}$  (c). For clarity “Ru” stands for the  $[\text{Ru}(\eta^6\text{-}p\text{-cym})]^{2+}$  entity.