

Supplementary Information for

A bipyridyl thorium metallocene: synthesis, structure and reactivity

Wenshan Ren,^a Haibin Song,^b Guofu Zi,^{*a} and Marc D. Walter^{*c}

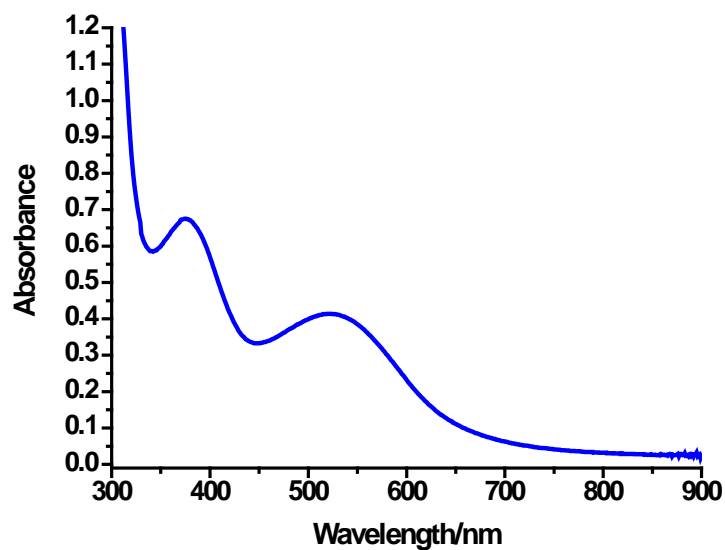
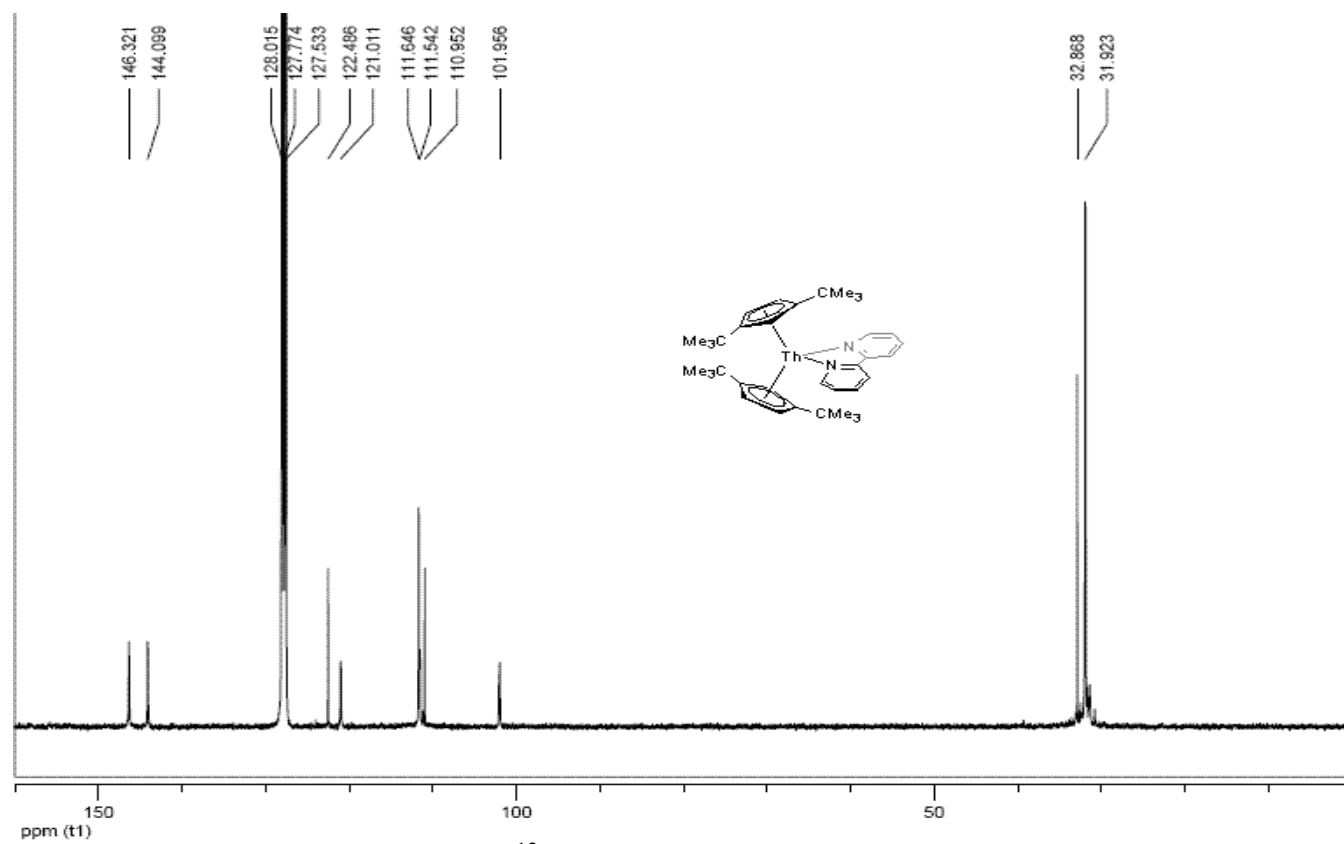
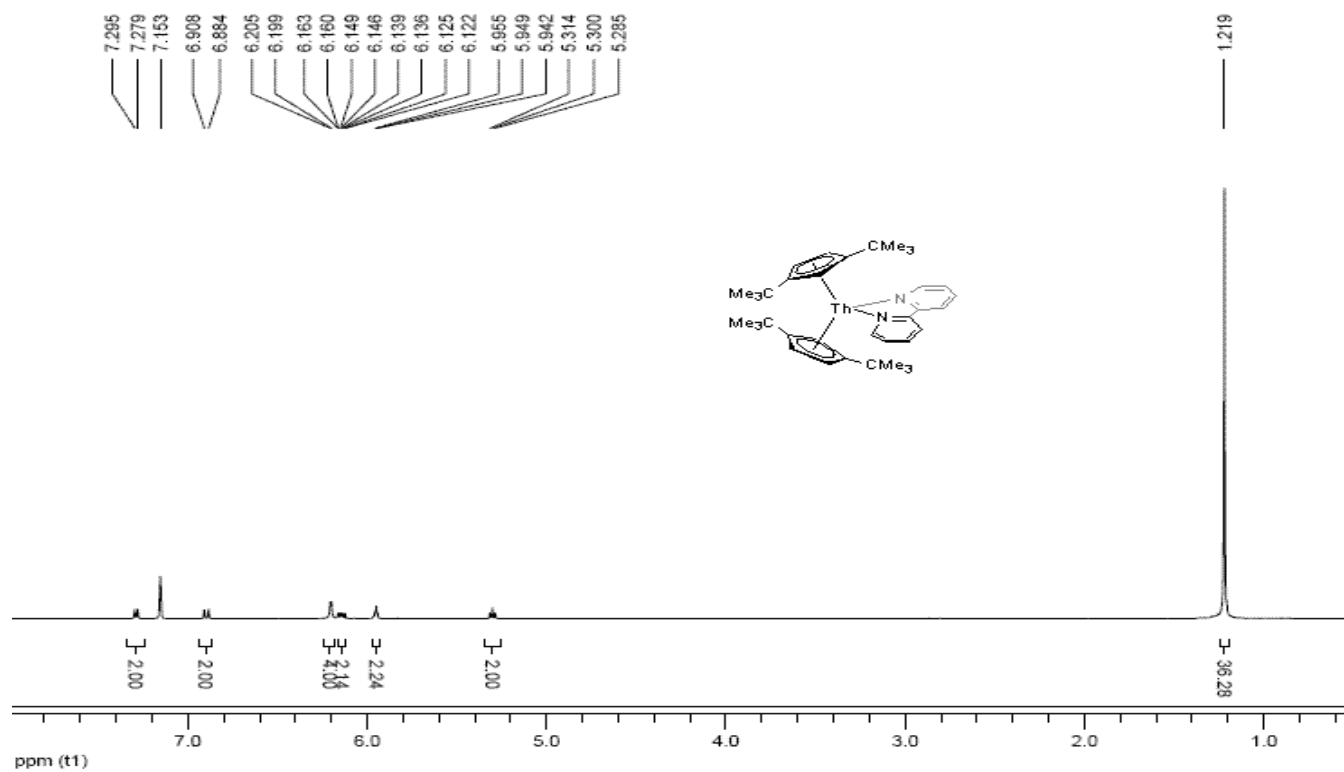


Fig. S1. UV-Vis spectrum of [η⁵-1,3-(Me₃C)₂C₅H₃]₂Th(bipy) (**2**) (concentration is 2.5×10^{-4} M in toluene). $\lambda_{\text{max}} = 375$ nm ($\epsilon = 2.70 \times 10^3$ M⁻¹cm⁻¹), 522 nm ($\epsilon = 1.66 \times 10^3$ M⁻¹cm⁻¹).



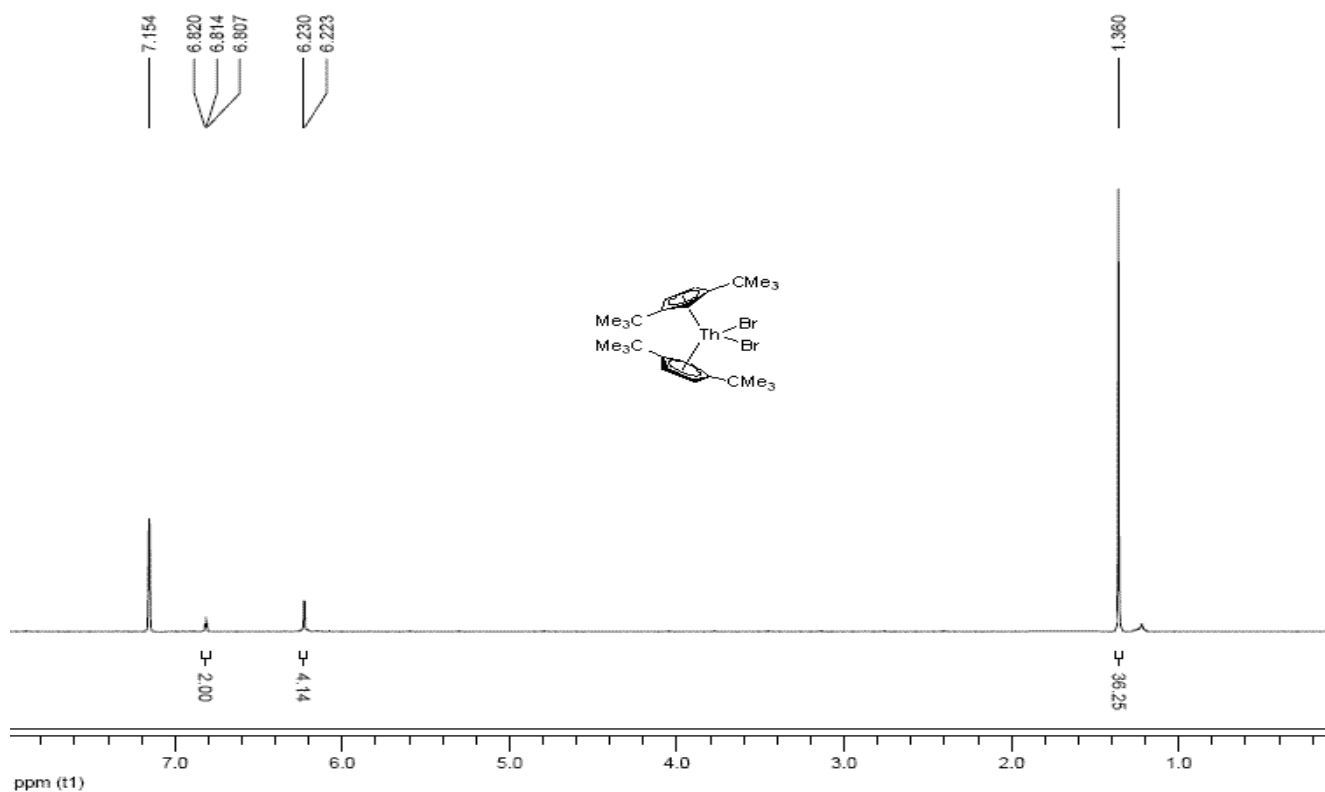


Figure S4. ¹H NMR spectrum of the complex 3.

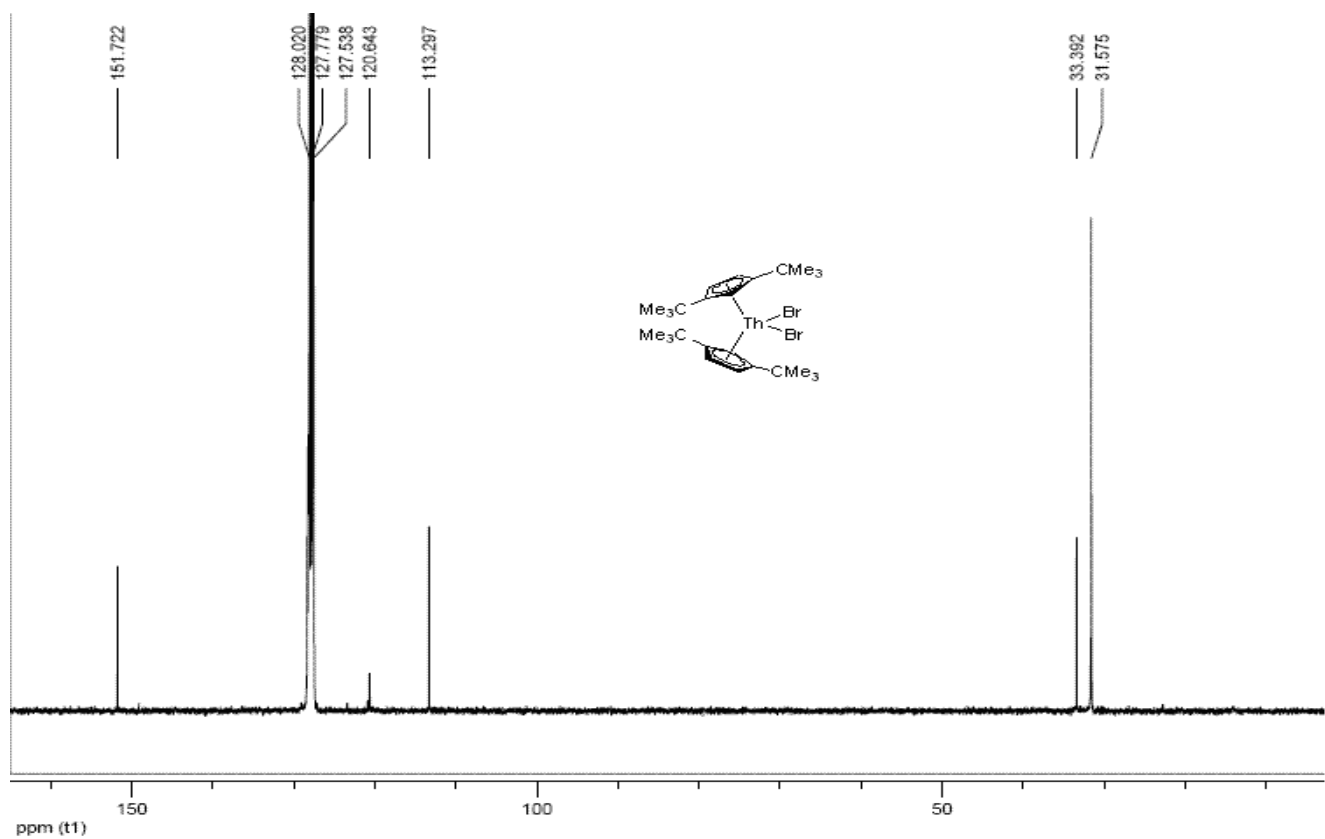


Figure S5. ¹³C NMR spectrum of the complex 3.

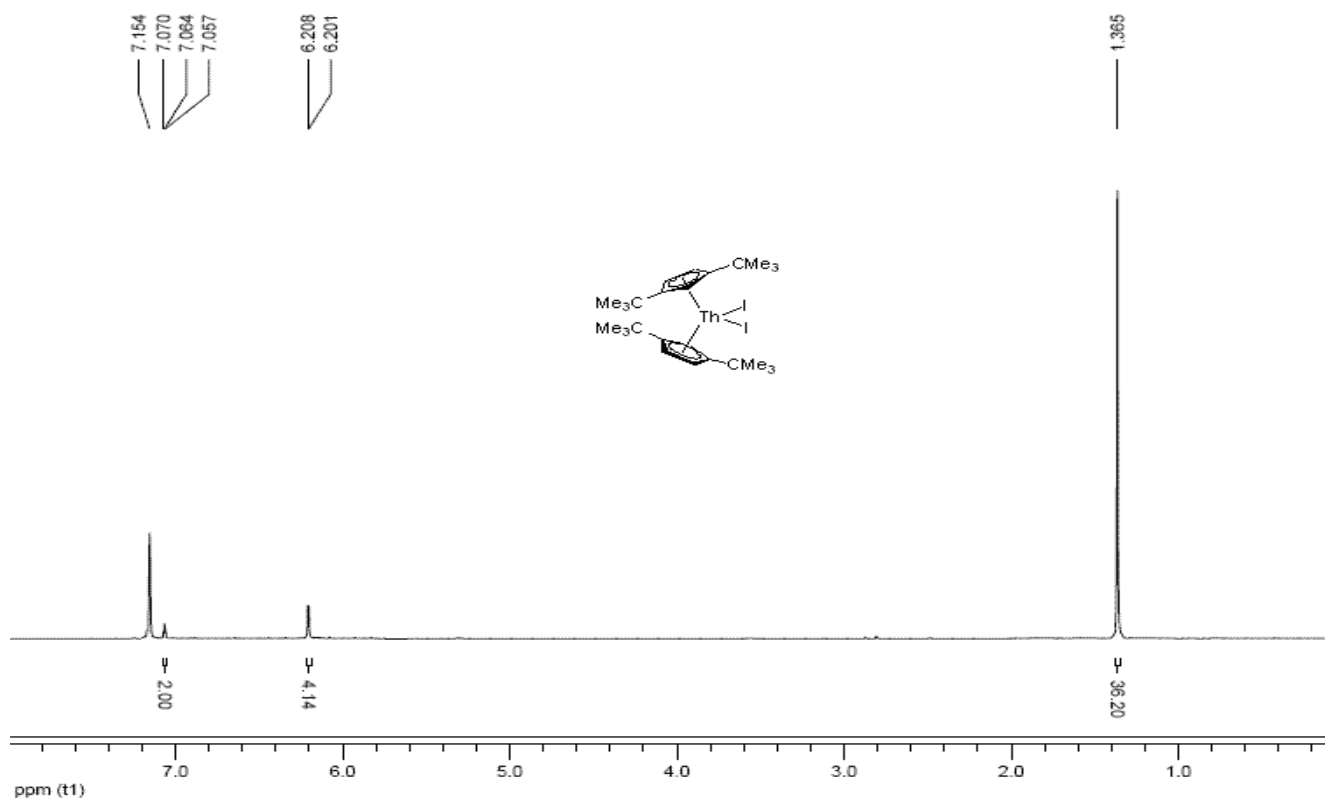


Figure S6. ¹H NMR spectrum of the complex 4.

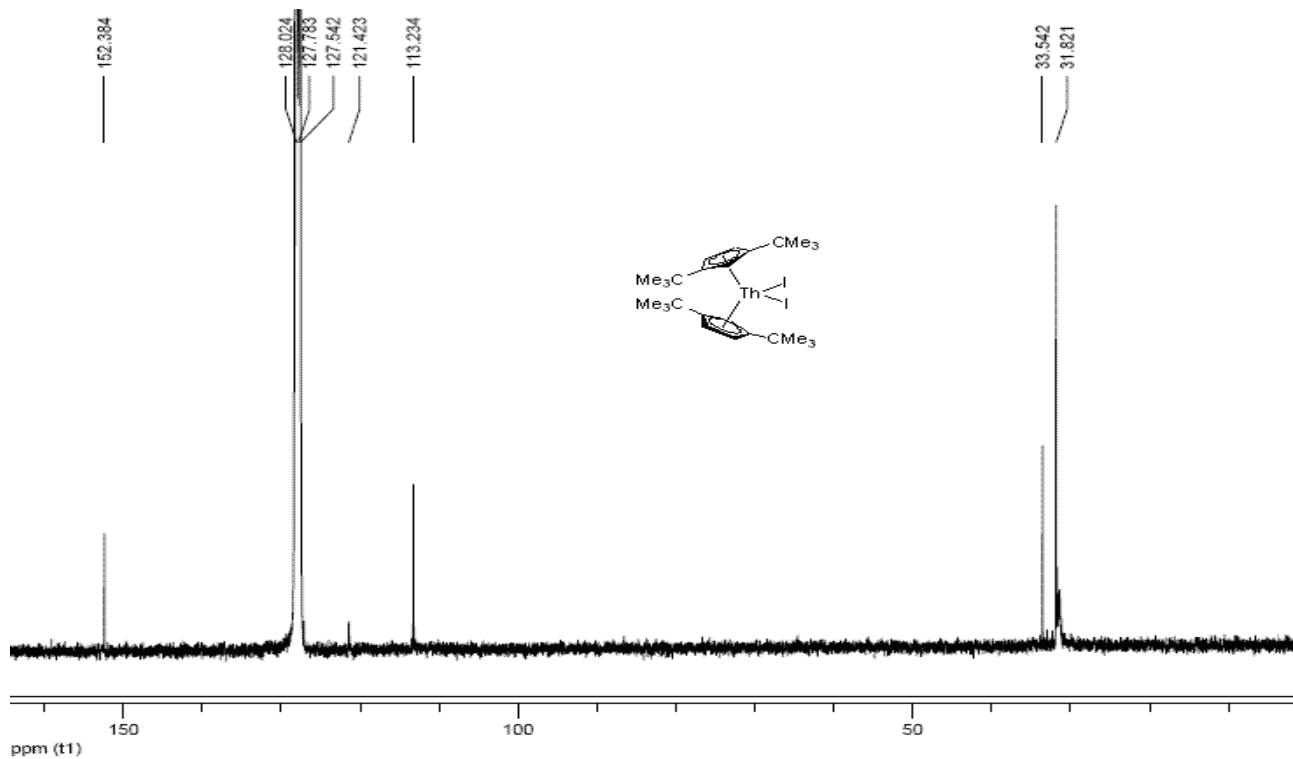


Figure S7. ¹³C NMR spectrum of the complex 4.

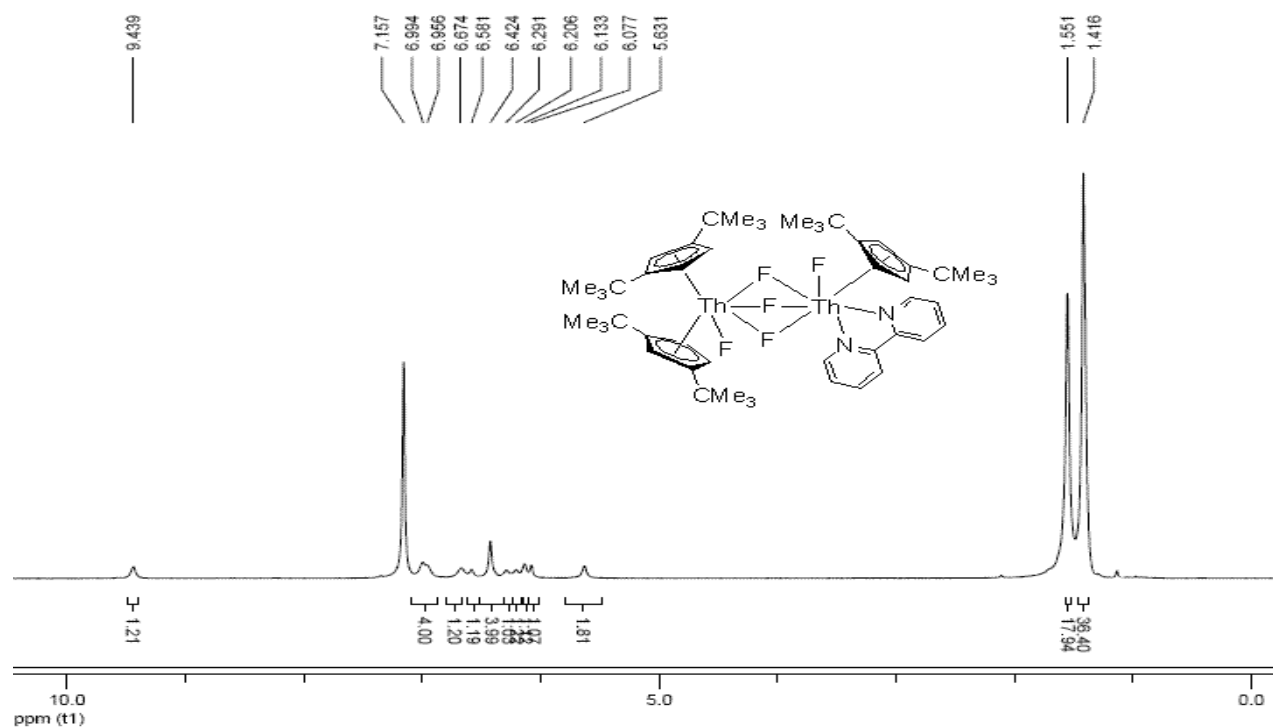


Figure S8. ¹H NMR spectrum of the complex 5.

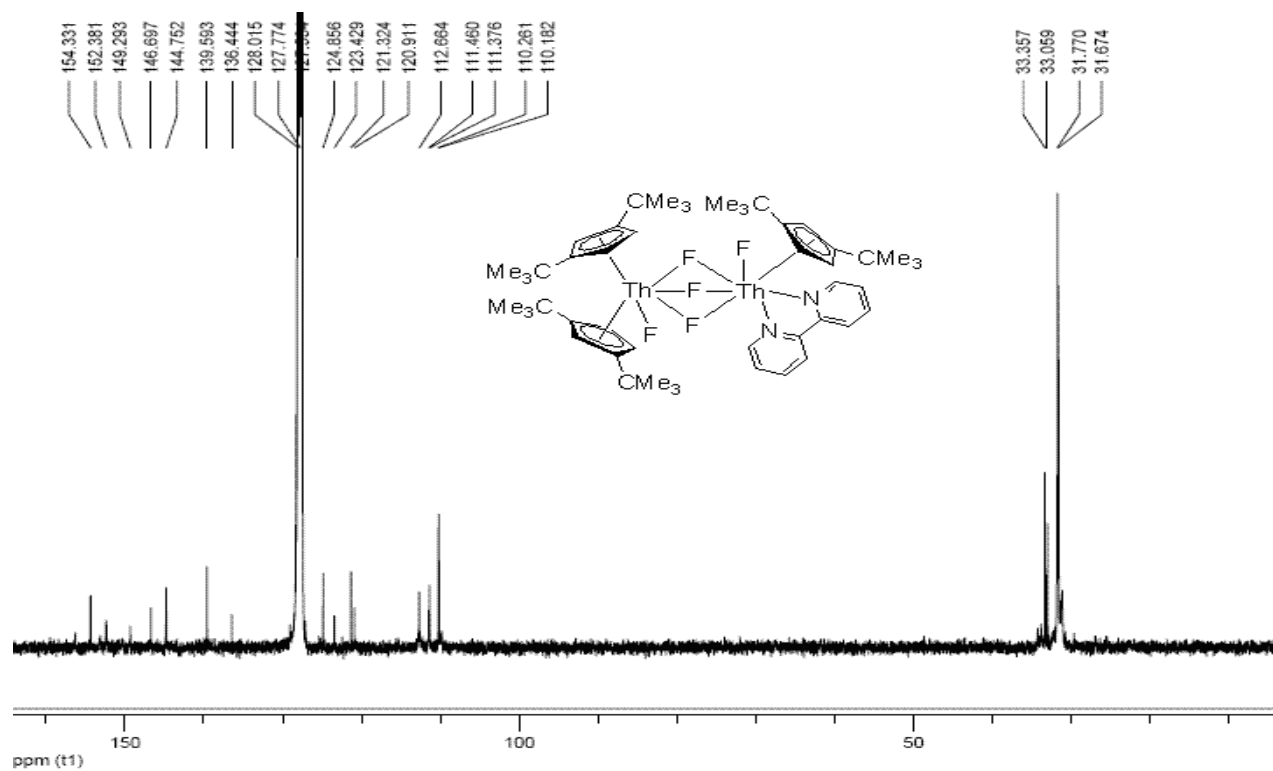


Figure S9. ¹³C NMR spectrum of the complex 5.

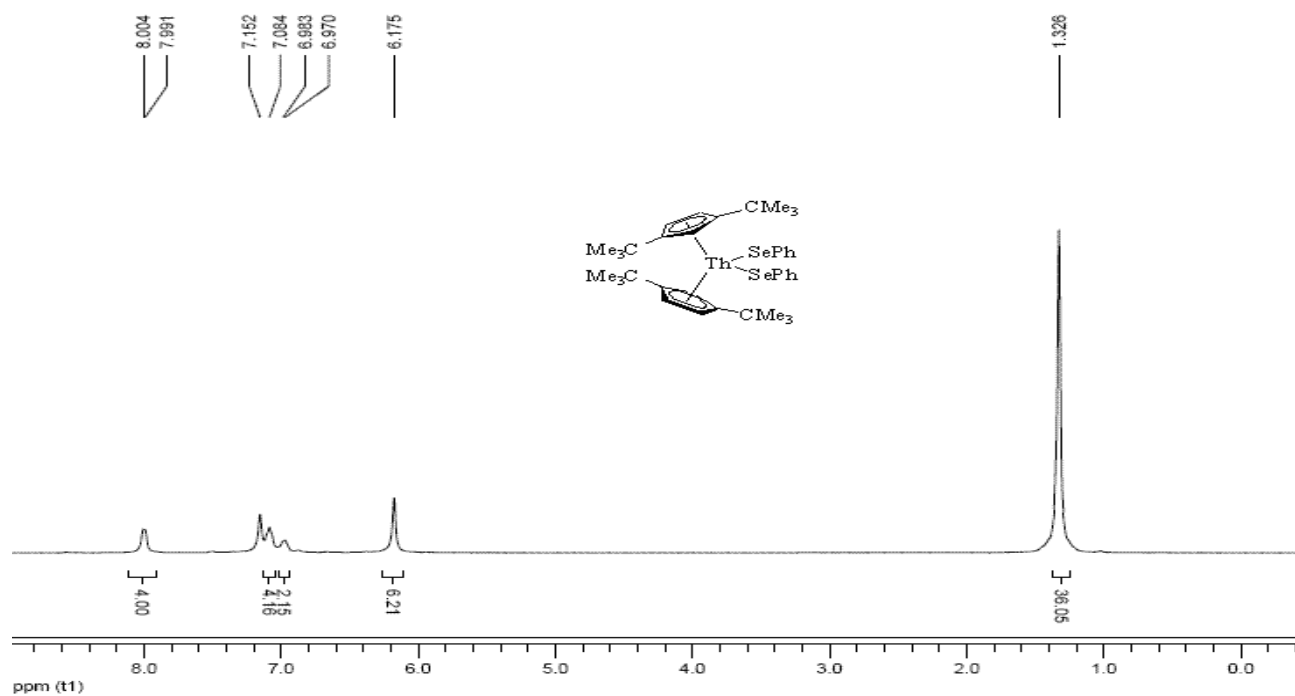


Figure S10. ^1H NMR spectrum of the complex 6.

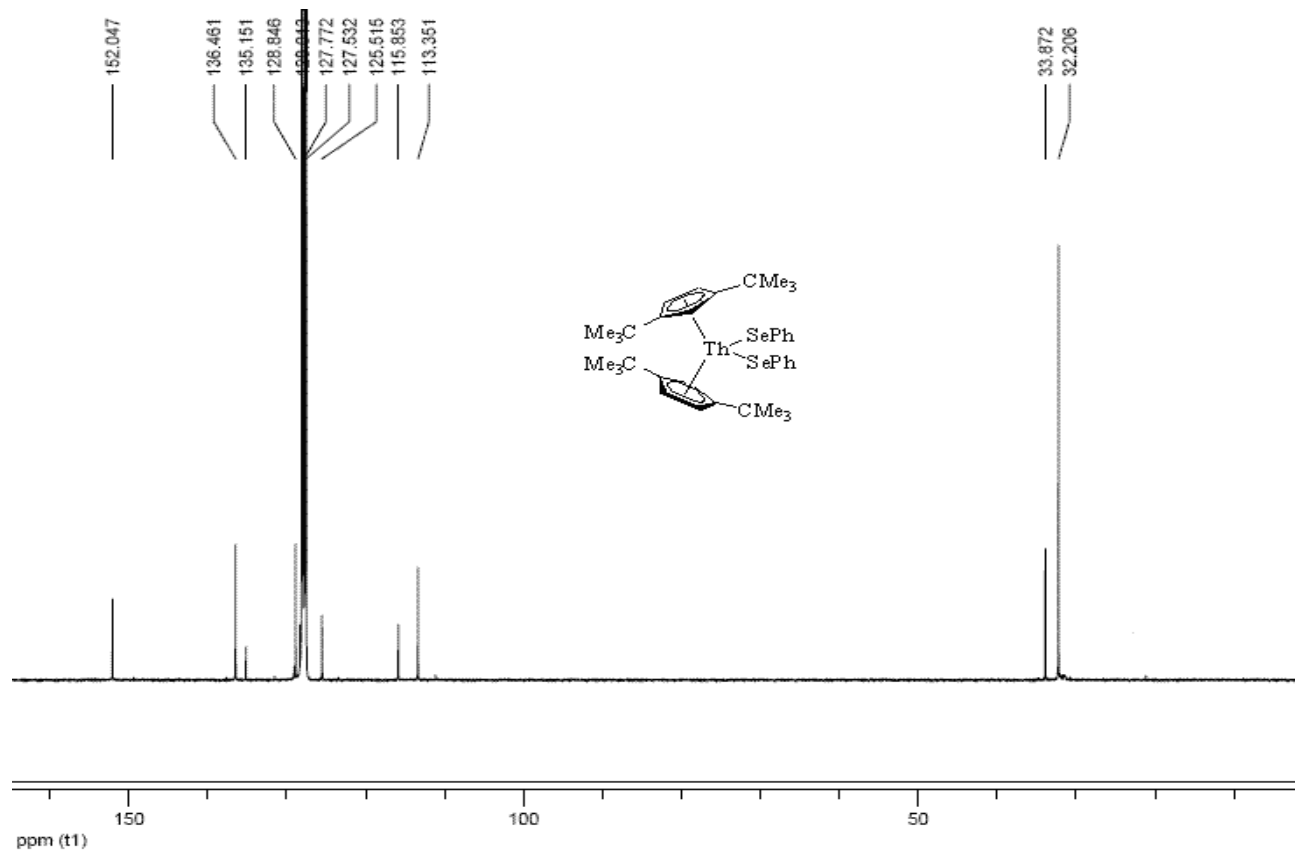


Figure S11. ^{13}C NMR spectrum of the complex 6.

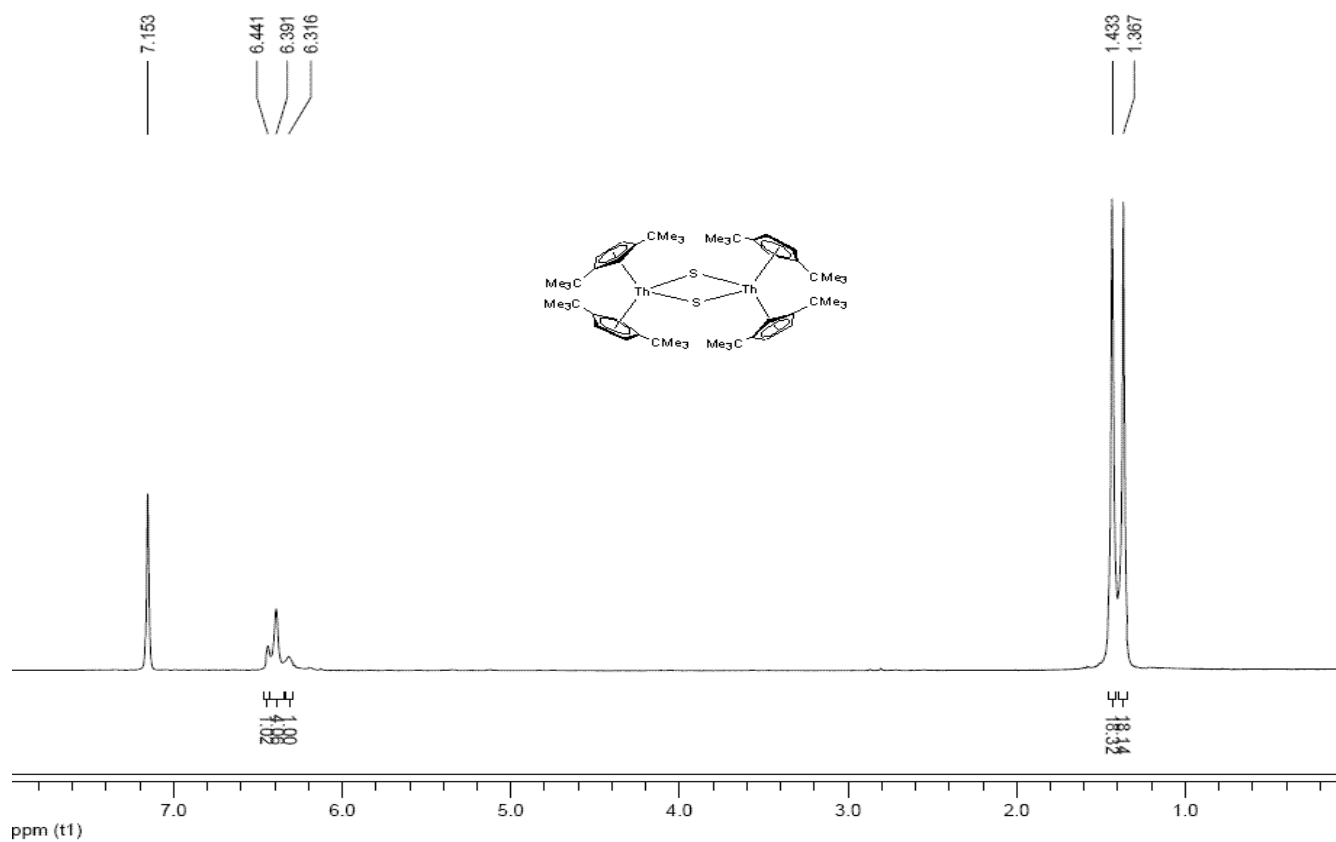


Figure S12. ¹H NMR spectrum of the complex **8**.

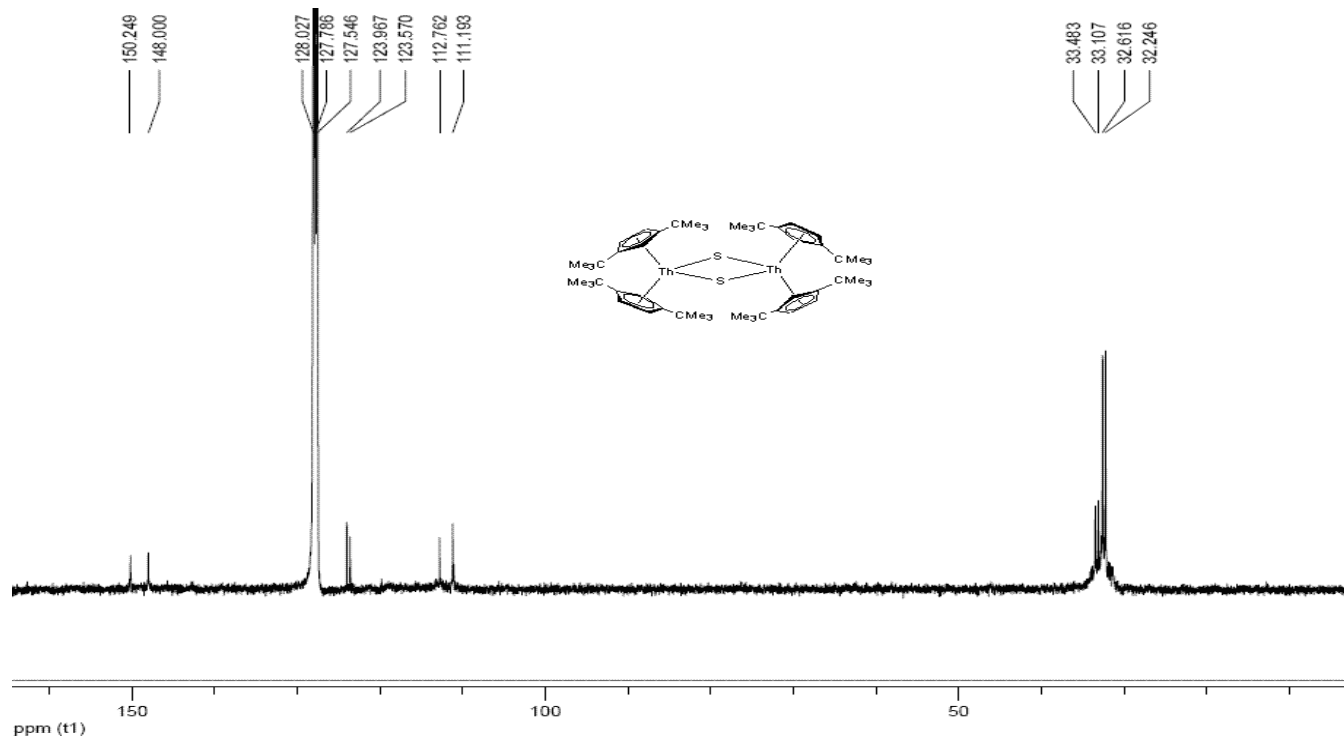


Figure S13. ¹³C NMR spectrum of the complex **8**.

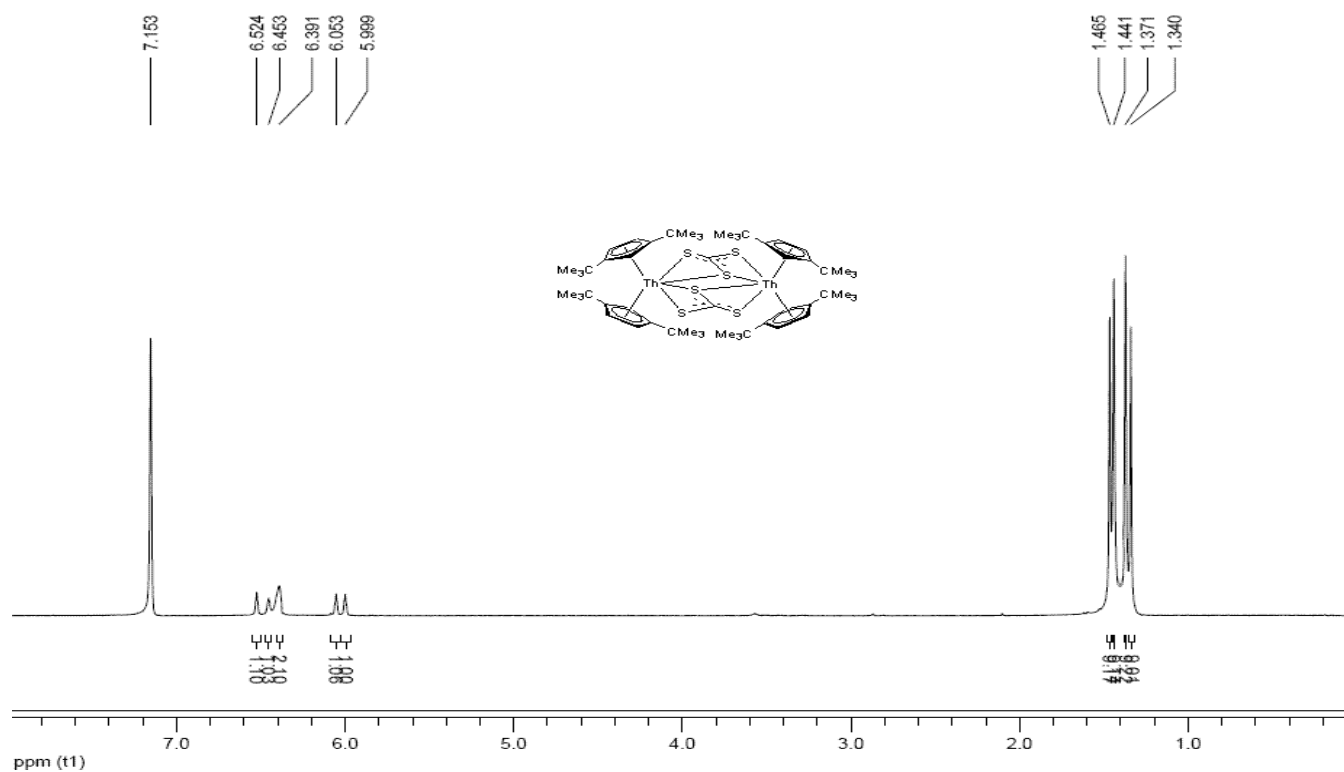


Figure S14. ^1H NMR spectrum of the complex 10.

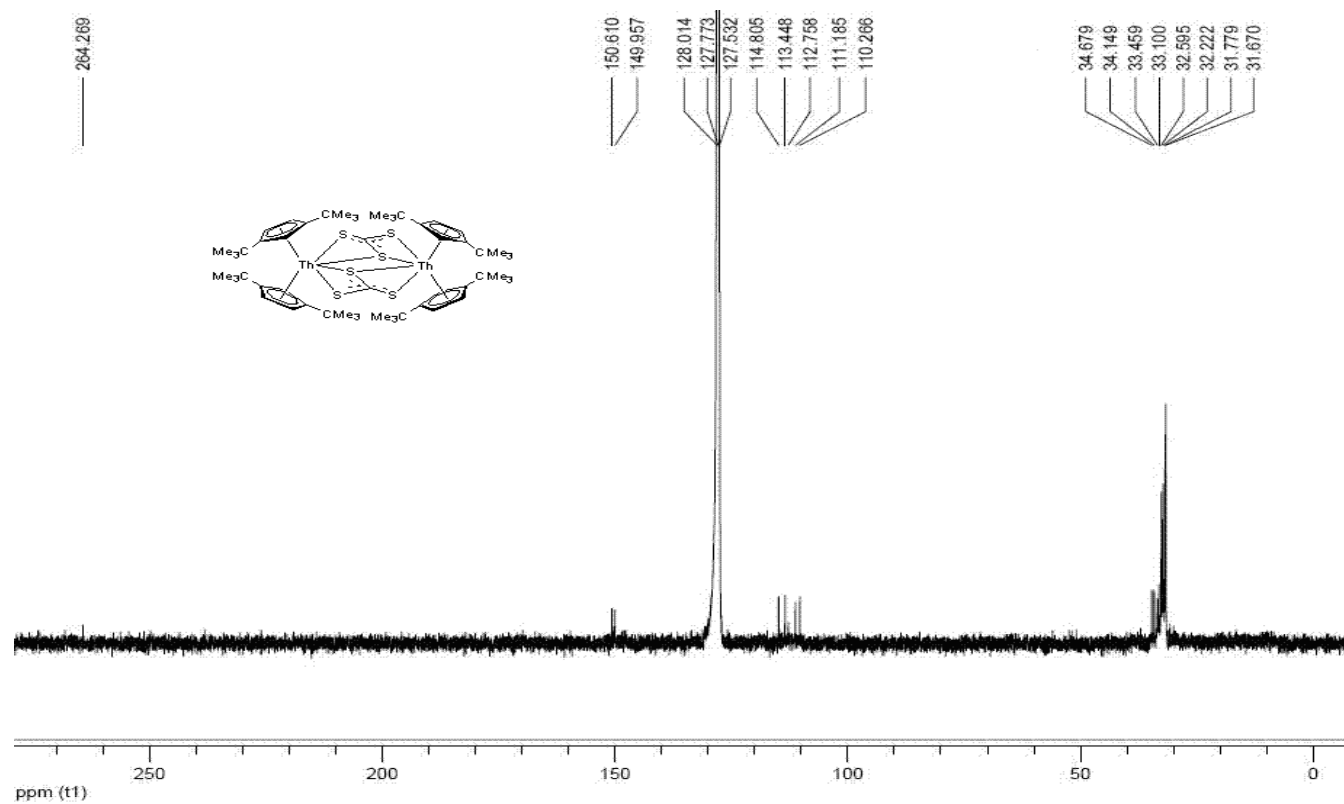


Figure S15. ^{13}C NMR spectrum of the complex 10.