

Supporting Information

Solid-Phase Synthesis of Oxaliplatin-TAT Peptide Bioconjugates

Sergey Abramkin^a, Seied M. Valiahdi^a, Michael A. Jakupec^a, Mathea S. Galanski*^a,
Nils Metzler-Nolte^b and Bernhard K. Keppler*^a

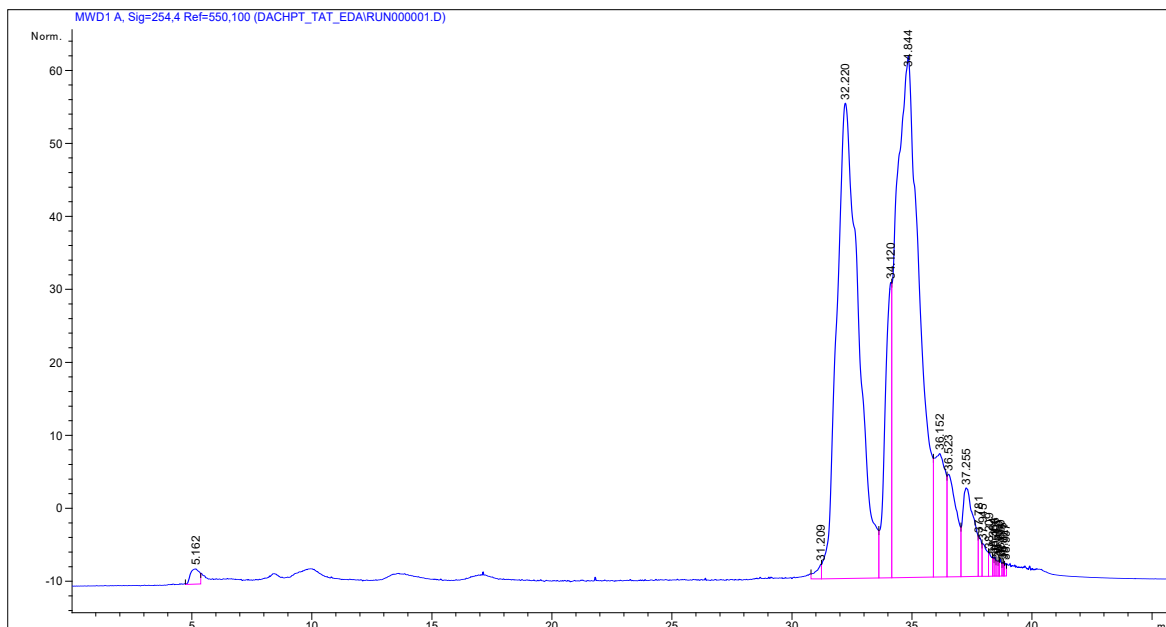
^aInstitute of Inorganic Chemistry, University of Vienna, Währinger Strasse 42, A-1090 Vienna, Austria

^bLehrstuhl für Anorganische Chemie I – Bioanorganische Chemie, Fakultät für Chemie und Biochemie, Ruhr-Universität Bochum, Universitätsstrasse 150, D-44801 Bochum, Germany

Contents

page S2	Figure S1 with HPLC purification of conjugates 2 and 3
page S3	Figure S2 with analytical HPLC traces of purified conjugates 2 and 3
page S4	Figure S3 with ESI-MS spectra of conjugate 2
page S5	Figure S4 with ESI-MS spectra of conjugate 3
page S6	Figure S5 with MALDI-TOF spectra of conjugates 2 and 3
page S7	Figure S6 with concentration-effect curves of complexes 1 - 4 in CH1, SK-OV-3, A549 and SW480 cell lines

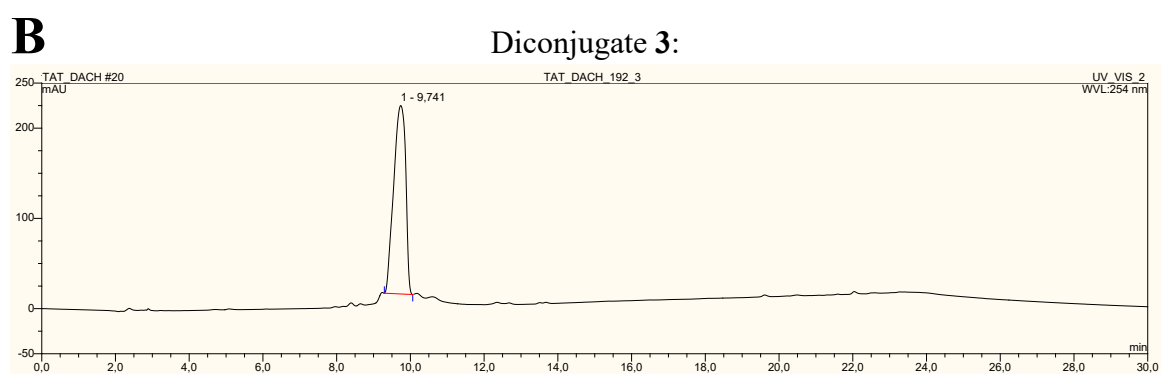
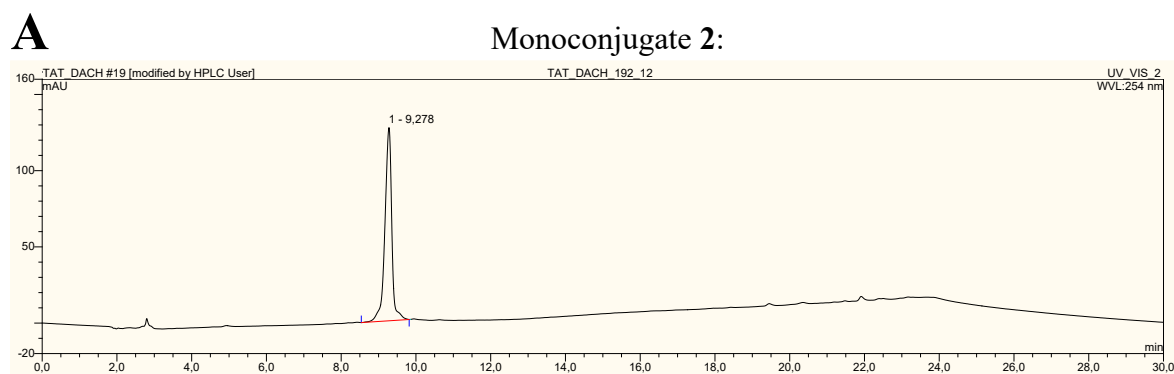
Figure S1. HPLC purification of of conjugates **2** and **3**. Column: GROM Saphir C18 column (25 mm × 250 mm), eluents: 0.1% TFA in water and 0.1% TFA in methanol. Monoconjugate **2** was eluted at 32 min, diconjugate **3** at 35 min.



Gradient conditions:

time, min	% MeOH	Rate, ml/min
0	20	20
25	20	20
35	40	20
45	20	20

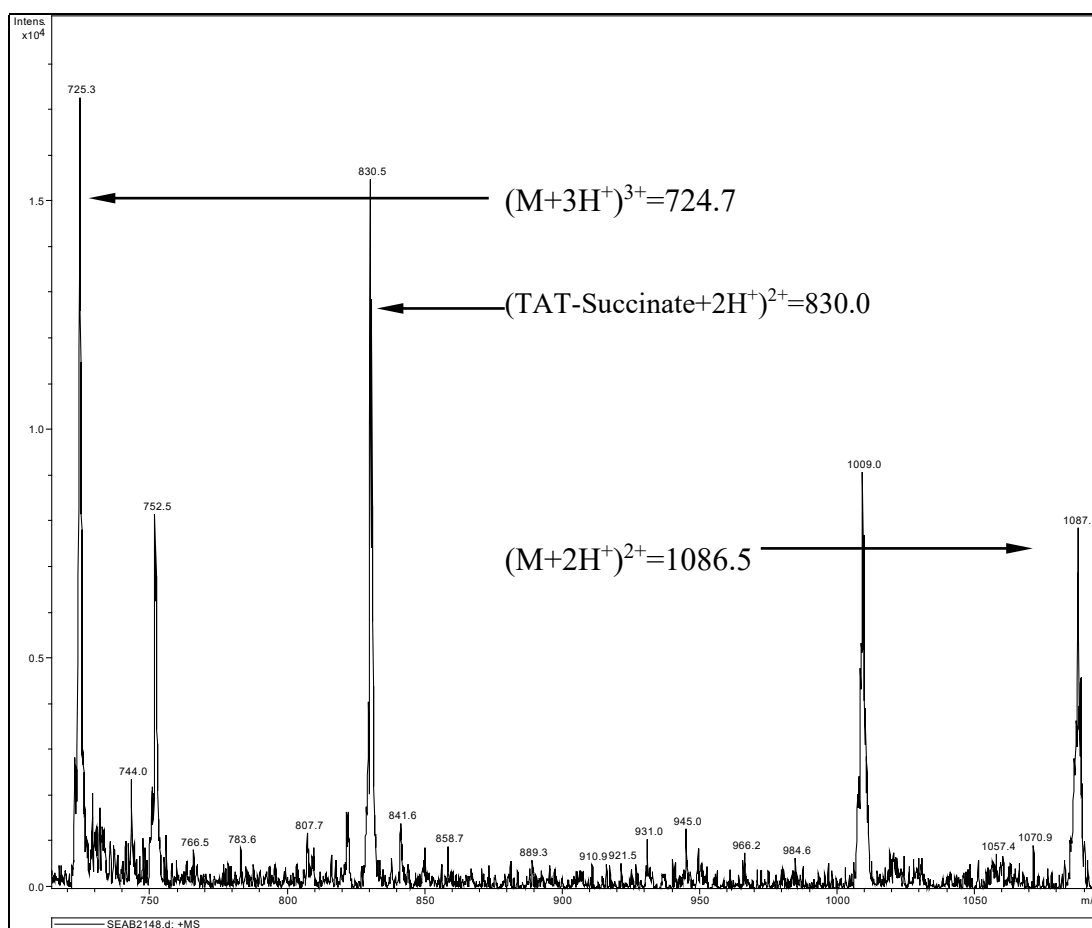
Figure S2. Analytical HPLC traces of purified conjugates **2** (A, 9.28 min) and **3** (B, 9.74 min). Column : Agilent ZORBAX Bonus-RP (4.6 mm × 250 mm), eluents: 0.1% TFA in water and 0.1% TFA in methanol.



Gradient conditions:

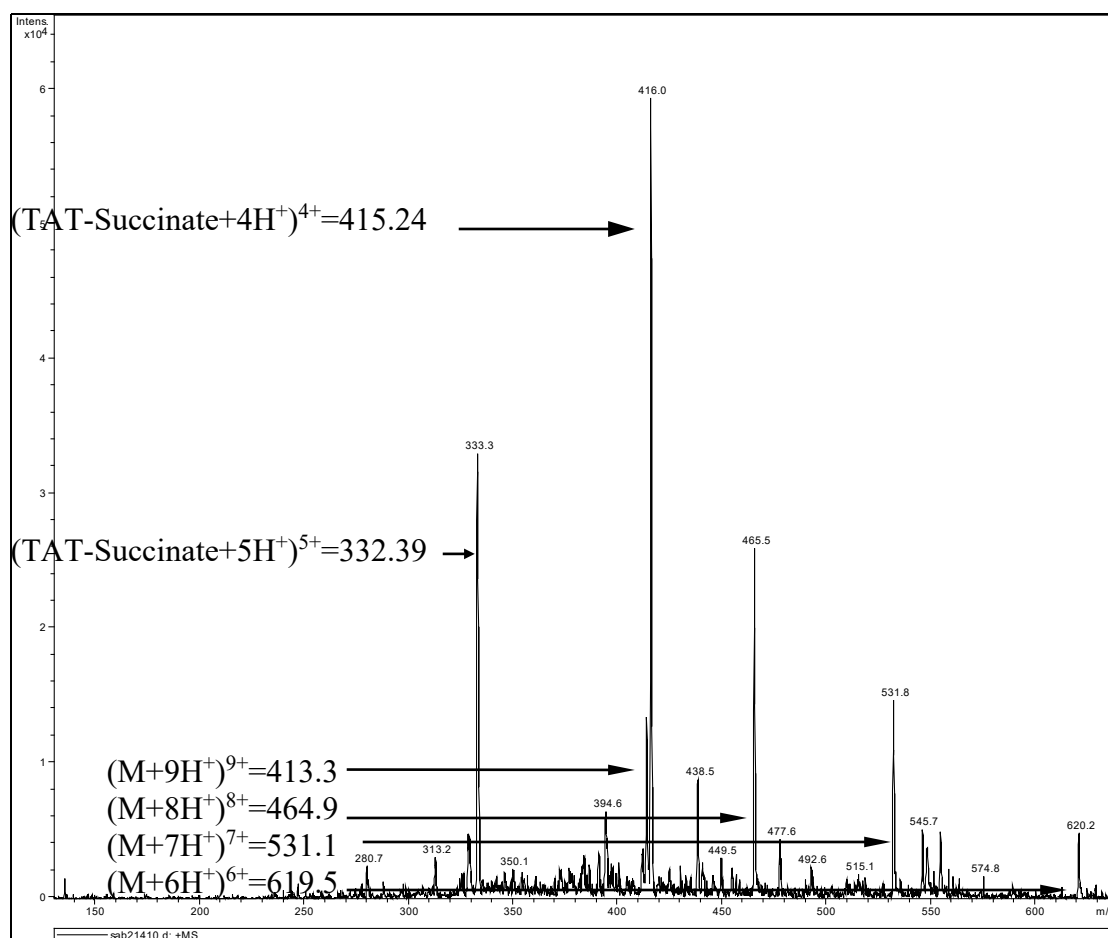
time, min	% MeOH	Rate, ml/min
0	5	0.8
20	95	0.8
3	5	0.8

Figure S3. ESI-MS characterization of conjugate **2**.



Monoconjugate **2**: Exact Mass: 2171.05
TAT-Succinate: Exact Mass: 1657.98

Figure S4. ESI-MS characterization of conjugate **3**.



Diconjugate **3**: Exact Mass: 3711.01
TAT-Succinate: Exact Mass: 1657.98

Figure S5. MALDI-TOF characterization of conjugates **2** and **3**.

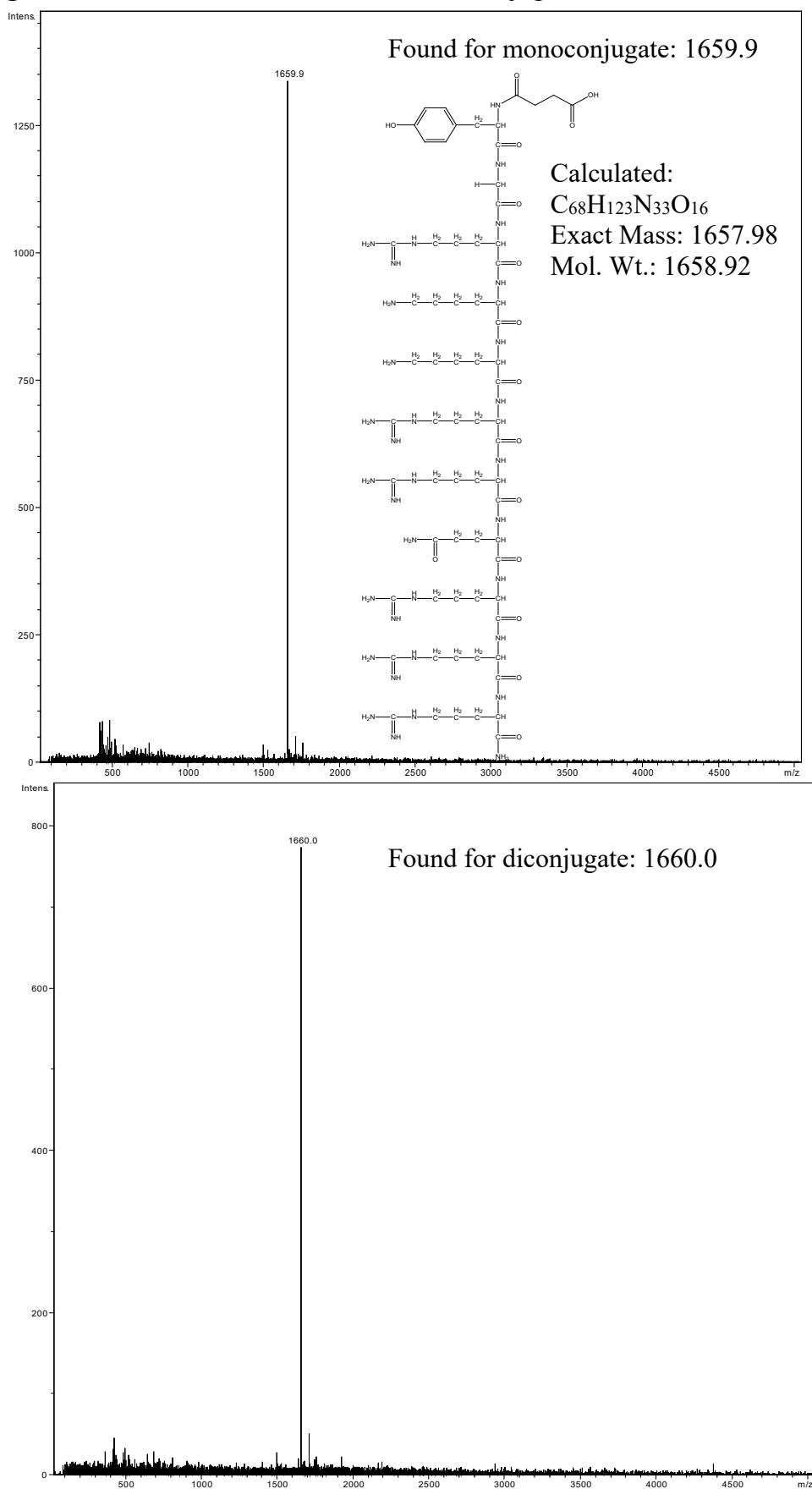


Figure S6. Concentration-effect curves of conjugates **2** and **3** and the precursor complex **1** and its amide derivative **4** in CH1 (A), SK-OV-3 (B), SW480 (C) and A549 (D) cell lines obtained by the MTT assay (96 h exposure)

