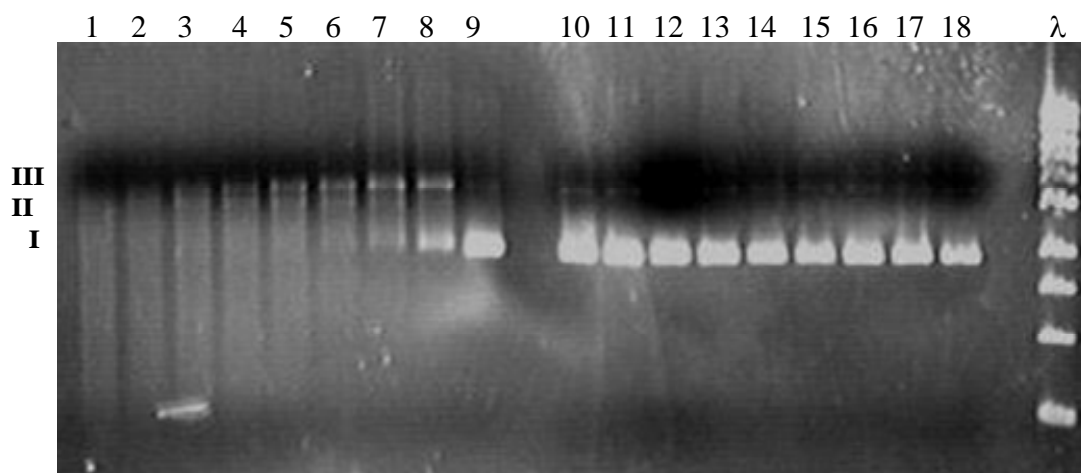


Gel electrophoresis of free base porphyrin, I, with plasmid DNA



Gel electrophoresis of circular plasmid DNA (pUC18) in the presence of complex I at a ratio of 100 base pairs/metal complex (lanes 1-9) and without complex I (lanes 10-18) and molecular weight standard λ . Samples were irradiated with a 100 W mercury arc lamp equipped with a long pass filter cutting off wavelengths below 400 nm. Samples were taken at 2 minute intervals.

Cell studies of nickel/ruthenium porphyrin, **II**.

