

## DTPA complexation of bismuth in human blood serum

G. Montavon<sup>a\*</sup>, A. Le Du<sup>a</sup>, J. Champion<sup>a</sup>, T. Rabung<sup>b</sup>, A. Morgenstern<sup>c</sup>

### Supplementary Information

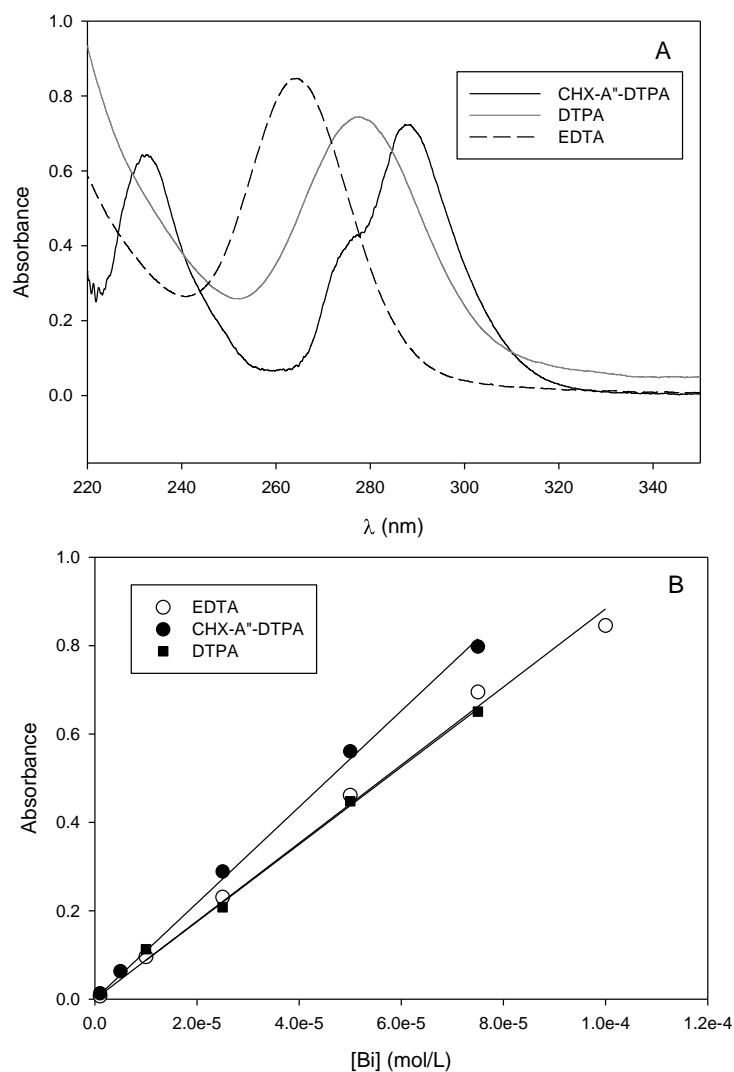


Figure SI 1. (A) UV spectra of Bi(III) complexed with the different chelating agents studied.  $[Bi]=10^{-4}$  M,  $pH=5$ ,  $[EDTA]=1.3 \cdot 10^{-4}$  M,  $[CHX-A''-DTPA]=[DTPA]=10^{-4}$  M,  $0.1$  M  $NaClO_4$ . (B) Absorbance measured at 264, 288.8 and 277.1 nm as a function of concentration of Bi(III) complexed with EDTA, CHX-A''-DTPA and DTPA, respectively.  $[EDTA]=1.3 \cdot 10^{-4}$  M, and  $[CHX-A''-DTPA]=[DTPA]=10^{-4}$  M. The lines are fitted curves with  $\epsilon^{264}$  (Bi-EDTA) $= (8.83 \pm 0.16) \cdot 10^3$   $L \cdot mol^{-1} \cdot cm^{-1}$ ,  $\epsilon^{288.8}$  (Bi-CHX-A''-DTPA) $= (1.09 \pm 0.02) \cdot 10^4$   $L \cdot mol^{-1} \cdot cm^{-1}$  and  $\epsilon^{277.1}$  (Bi-DTPA) $= (8.76 \pm 0.19) \cdot 10^3$   $L \cdot mol^{-1} \cdot cm^{-1}$ .