

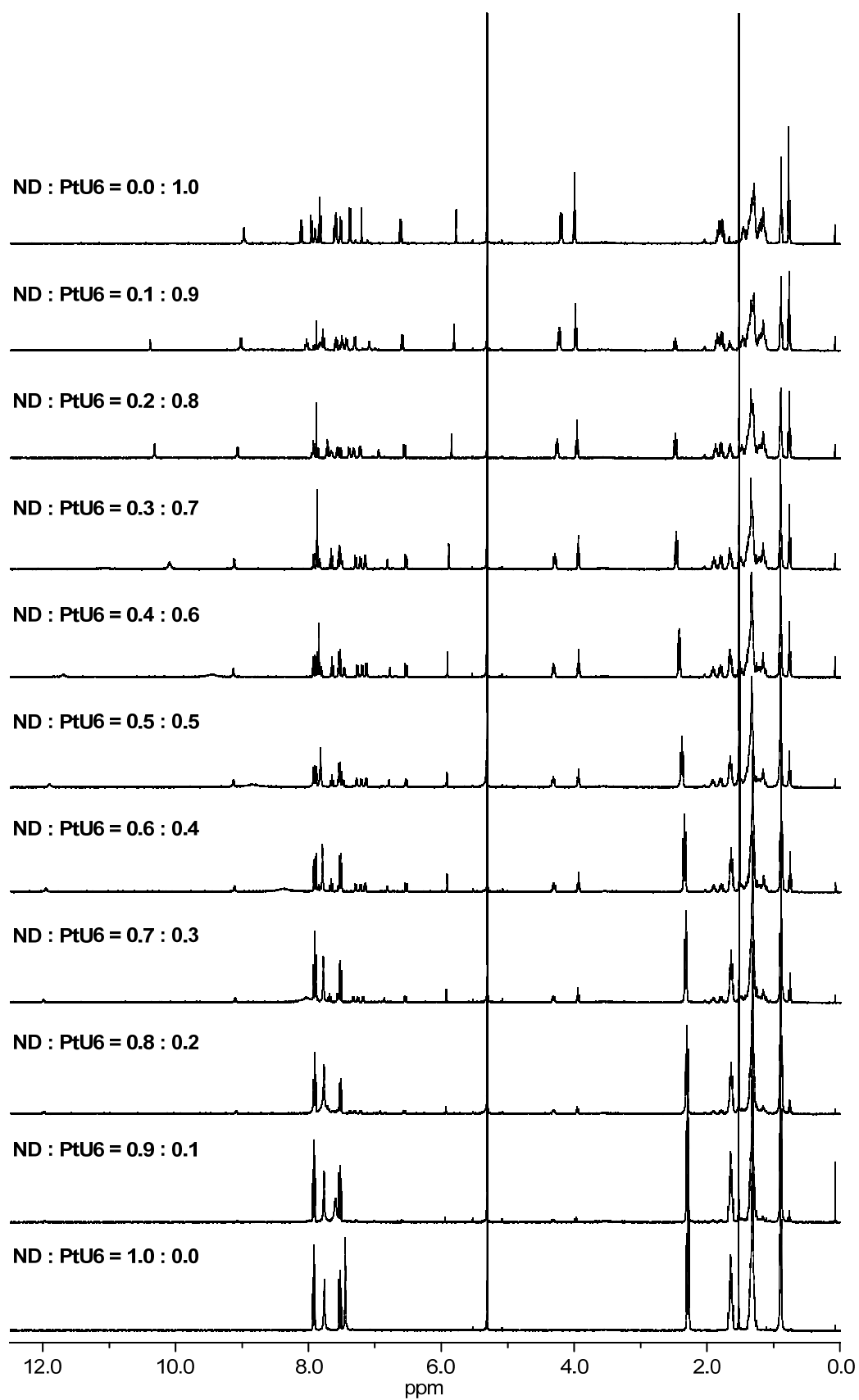
## Supplementary Information for

### Design and Controlled Emission Properties of Bioorganometallic Compounds Composed of Uracils and Organoplatinum(II) Moieties

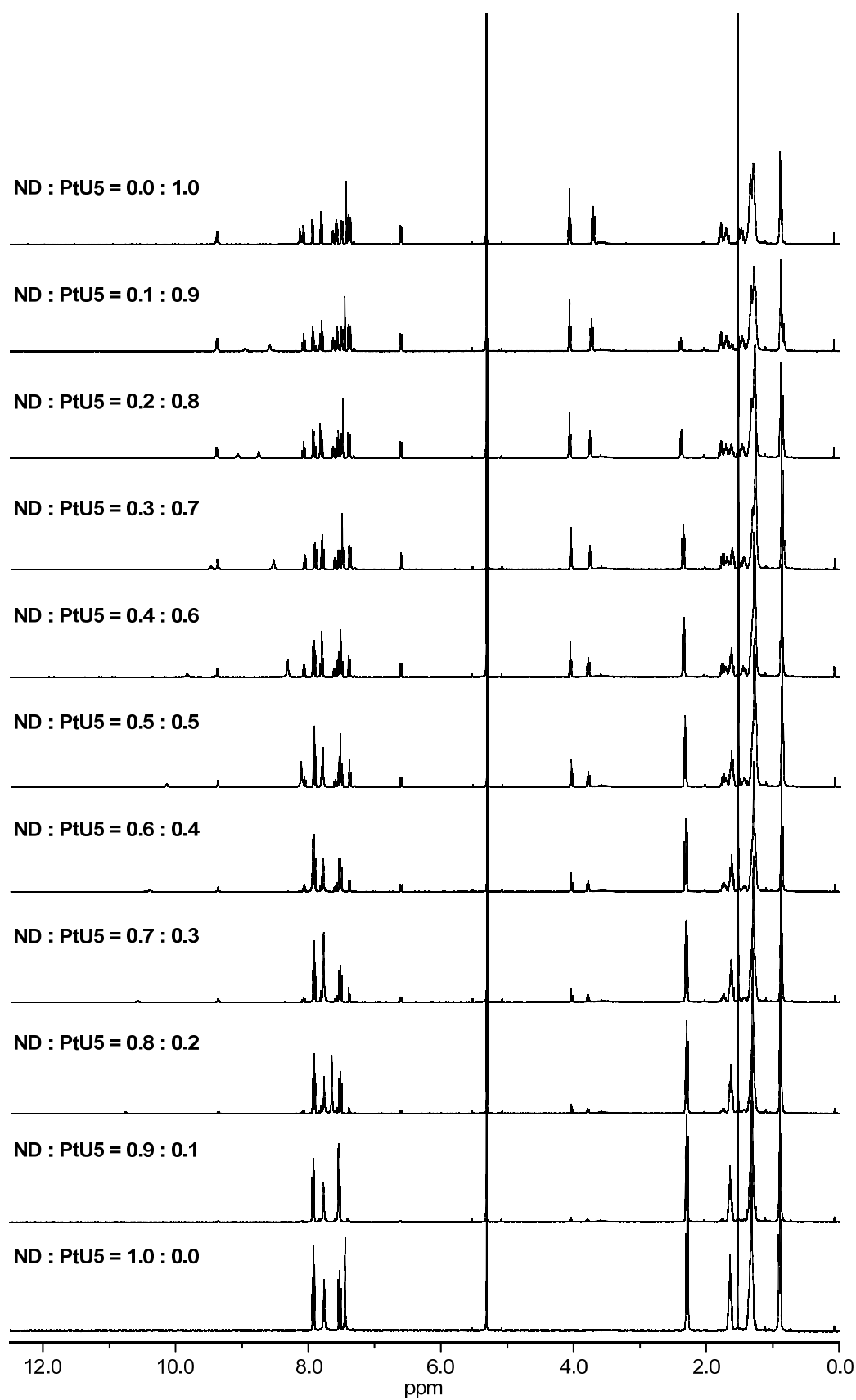
Toshiyuki Moriuchi,<sup>\*a</sup> Yuki Sakamoto,<sup>a</sup> Shunichi Noguchi,<sup>a</sup> Takashi Fujiwara,<sup>a</sup> Shigehisa Akine,<sup>b</sup> Tatsuya Nabeshima<sup>b</sup> and Toshikazu Hirao<sup>\*a</sup>

<sup>a</sup> *Department of Applied Chemistry, Graduate School of Engineering, Osaka University, Yamada-oka, Suita, Osaka 565-0871, Japan*  
*moriuchi@chem.eng.osaka-u.ac.jp, hirao@chem.eng.osaka-u.ac.jp*

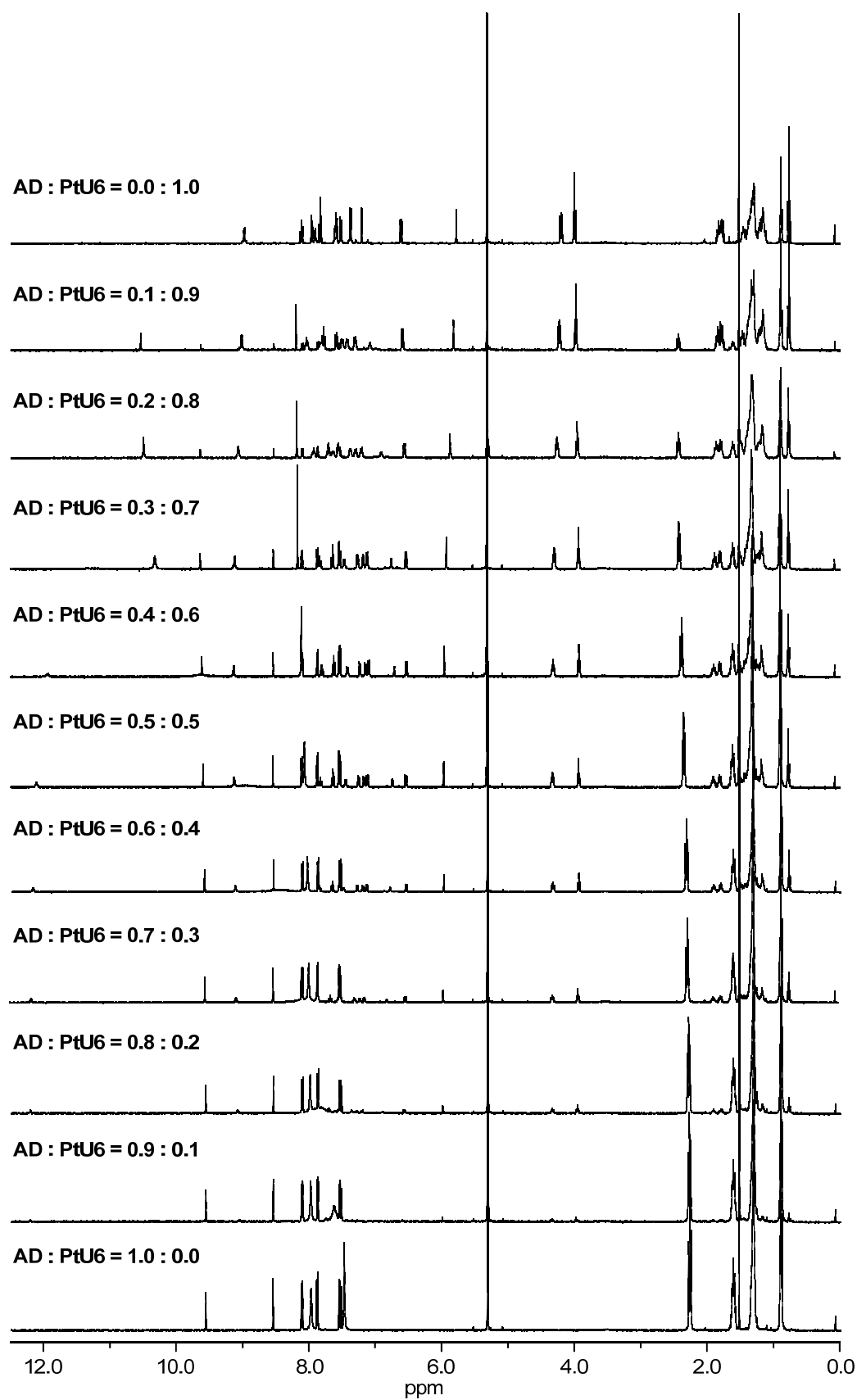
<sup>b</sup> *Graduate School of Pure and Applied Sciences, University of Tsukuba, 1-1-1 Tennodai, Tsukuba, Ibaraki 305-8571, Japan*  
*akine@chem.tsukuba.ac.jp, nabesima@chem.tsukuba.ac.jp.*



**Figure S1** <sup>1</sup>H NMR spectra of a series of samples of identical total concentration (CD<sub>2</sub>Cl<sub>2</sub>, 2.0 × 10<sup>-3</sup> M) containing different mole fractions of **ND** and **PtU6**.



**Figure S2** <sup>1</sup>H NMR spectra of a series of samples of identical total concentration (CD<sub>2</sub>Cl<sub>2</sub>, 2.0 × 10<sup>-3</sup> M) containing different mole fractions of **ND** and **PtU5**.



**Figure S3**  $^1\text{H}$  NMR spectra of a series of samples of identical total concentration ( $\text{CD}_2\text{Cl}_2$ ,  $2.0 \times 10^{-3}$  M) containing different mole fractions of **AD** and **PtU6**.