

Electronic Supplementary Information (ESI):

Precursor route to single-crystalline WO₃ nanoplates with an uneven surface and enhanced sensing properties

Xiao-Xin Zou,^{a,b} Guo-Dong Li,^{*b} Pei-Pei Wang,^b Juan Su,^{a,b} Jun Zhao,^b Li-Jing Zhou^b
Yu-Ning Wang,^{a,b} and Jie-Sheng Chen^{*a}

^a School of Chemistry and Chemical Engineering, Shanghai Jiao Tong University, Shanghai 200240, China

^b State Key Laboratory of Inorganic Synthesis and Preparative Chemistry, Jilin University, Changchun 130012, China

E-mail: chemcj@sjtu.edu.cn

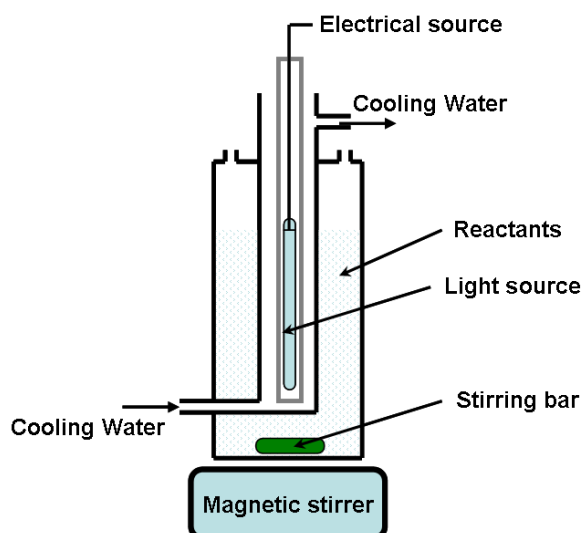


Figure S1 Schematic drawing of quartz cylindrical cell for UV-induced reaction.

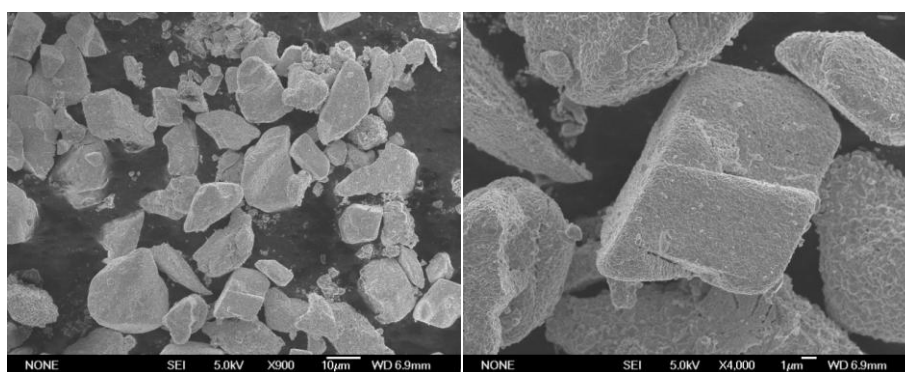


Figure S2 SEM images of the commercially available WO_3 sample.