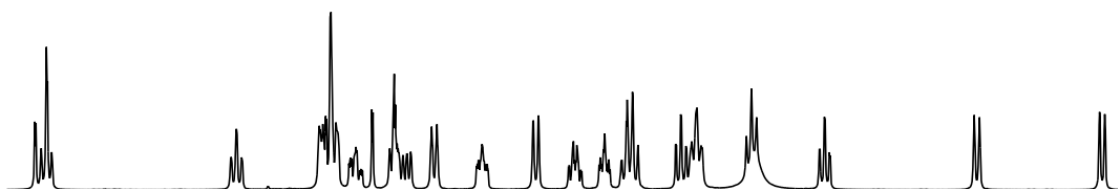


ESI to accompany:

## This is the title

Imenne Bouamaied, Edwin C. Constable,\* Catherine E. Housecroft\* and Jennifer A. Zampese

(a)



(b)

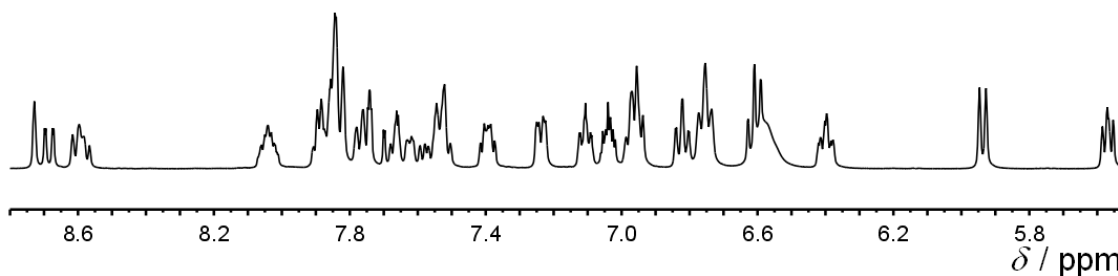


Fig. S1. The aromatic regions of the 400 MHz <sup>1</sup>H NMR spectra (CD<sub>2</sub>Cl<sub>2</sub>, room temperature) of (a) [Ir(ppy)<sub>2</sub>(**2**)]PF<sub>6</sub>, and (b) a 1 : 1 mixture of [Ir(ppy)<sub>2</sub>(**2**)]PF<sub>6</sub> and [Et<sub>4</sub>N][Δ-TRISPHAT].