

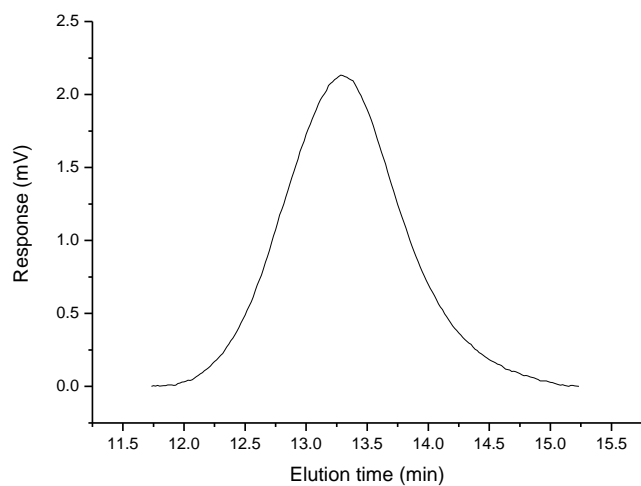
## Supporting Information

### **Bimetallic lanthanide amido complexes as highly active initiators for the ring-opening polymerization of lactides**

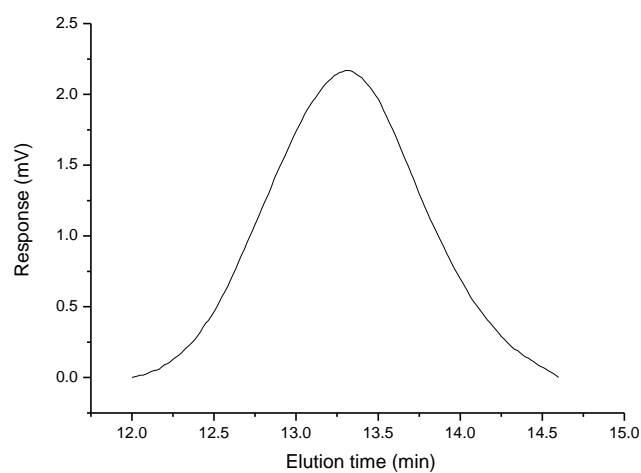
Song Sun,<sup>a</sup> Kun Nie,<sup>a</sup> Yufang Tan,<sup>a</sup> Bei Zhao,<sup>\*a</sup> Yong Zhang,<sup>a</sup> Qi Shen,<sup>a</sup> and Yingming Yao<sup>\*a,b</sup>

Key Laboratory of Organic Synthesis of Jiangsu Province, College of Chemistry,  
Chemical Engineering and Materials Science, Dushu Lake Campus, Soochow University,  
Suzhou 215123, People's Republic of China

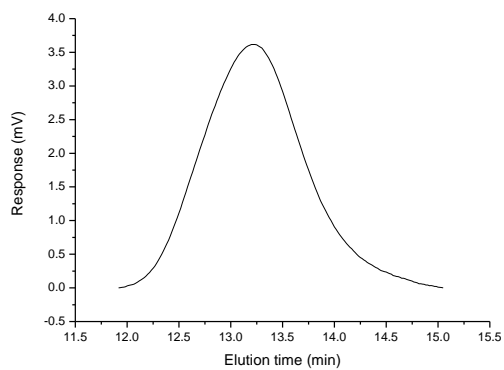
To whom correspondence should be addressed. Tel.: +86 512 65882806. Fax: +86 512  
65880305. E-mail: [yaoym@suda.edu.cn](mailto:yaoym@suda.edu.cn)



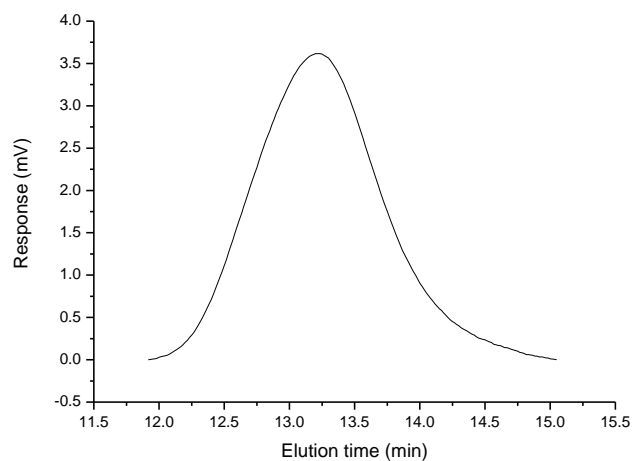
SFig 1. GPC trace of PLLA (Table 3, entry 2)



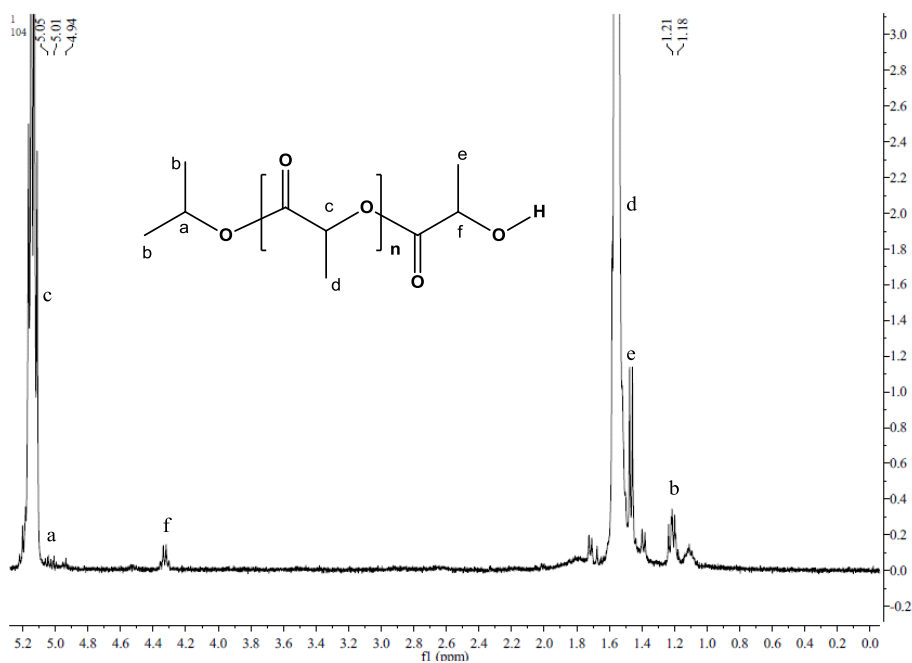
SFig 2. GPC trace of PLLA (Table 3, entry 3)



SFig 3. GPC trace of PLLA (Table 3, entry 20)



SFig 4. GPC trace of PLLA (Table 3, entry 22)



SFig 5. <sup>1</sup>H NMR spectrum (400 MHz, CDCl<sub>3</sub>) of the oligomer of *L*-lactide initiated by complex **3** after quenching with the addition of isopropanol containing 5% of HCl. Polymerization conditions: [*L*-LA]<sub>0</sub>/[I]<sub>0</sub> = 5, in toluene, 30 min, 25°C.