

Electronic Supplementary Information

Reaction of CO₂ with Propylene Oxide and Styrene Oxide catalyzed by a Chromium(III) Amine-bis(phenolate) Complex

Rebecca K. Dean,^a Katalin Devaine-Pressing,^a Louise N. Dawe,^b and Christopher M. Kozak^{*a}

^aDepartment of Chemistry, Memorial University of Newfoundland, St. John's, Newfoundland, Canada A1B 3X7. E-mail: ckozak@mun.ca; Tel: +1-709-864-8082

^bC-CART X-ray Diffraction Laboratory, Department of Chemistry, Memorial University of Newfoundland, St. John's, Newfoundland, Canada

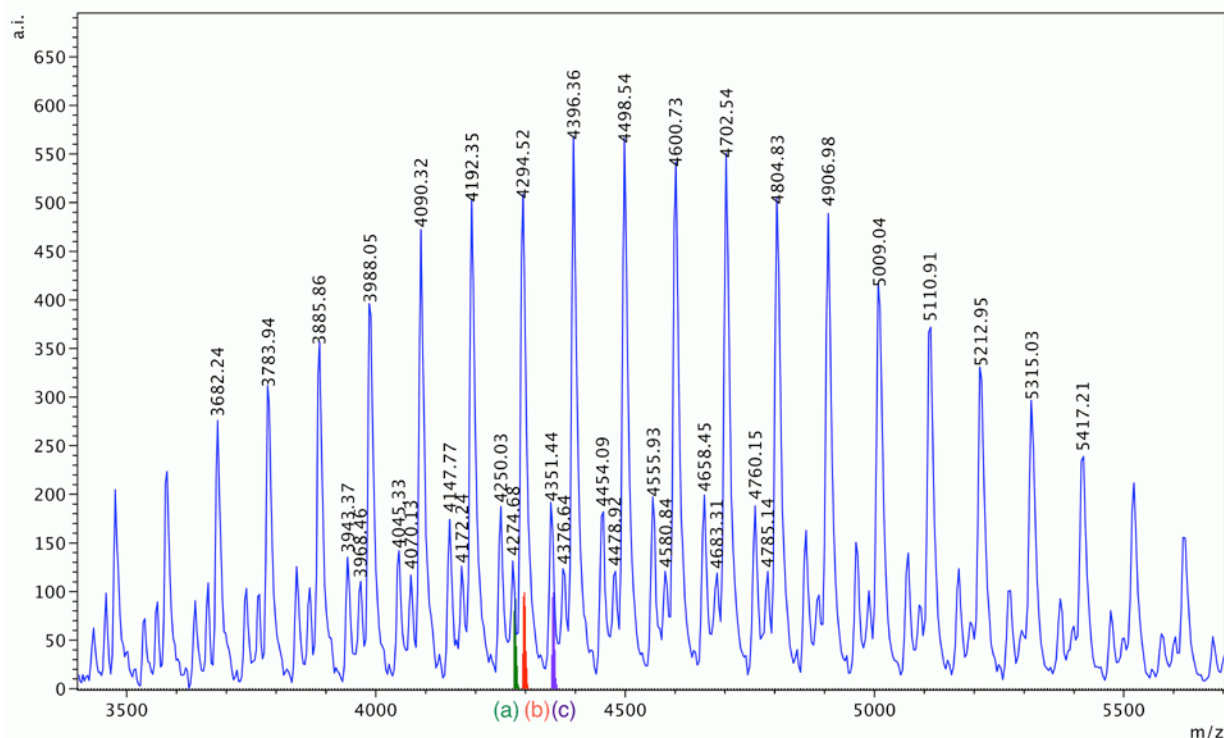


Figure S1. MALDI-TOF MS of PPC produced by **1a** with PPNN₃ (Table 1, entry 5). Modeled isotopic masses (when n = 41) for polymer chains with end groups (a-c) as shown in Figure 7.

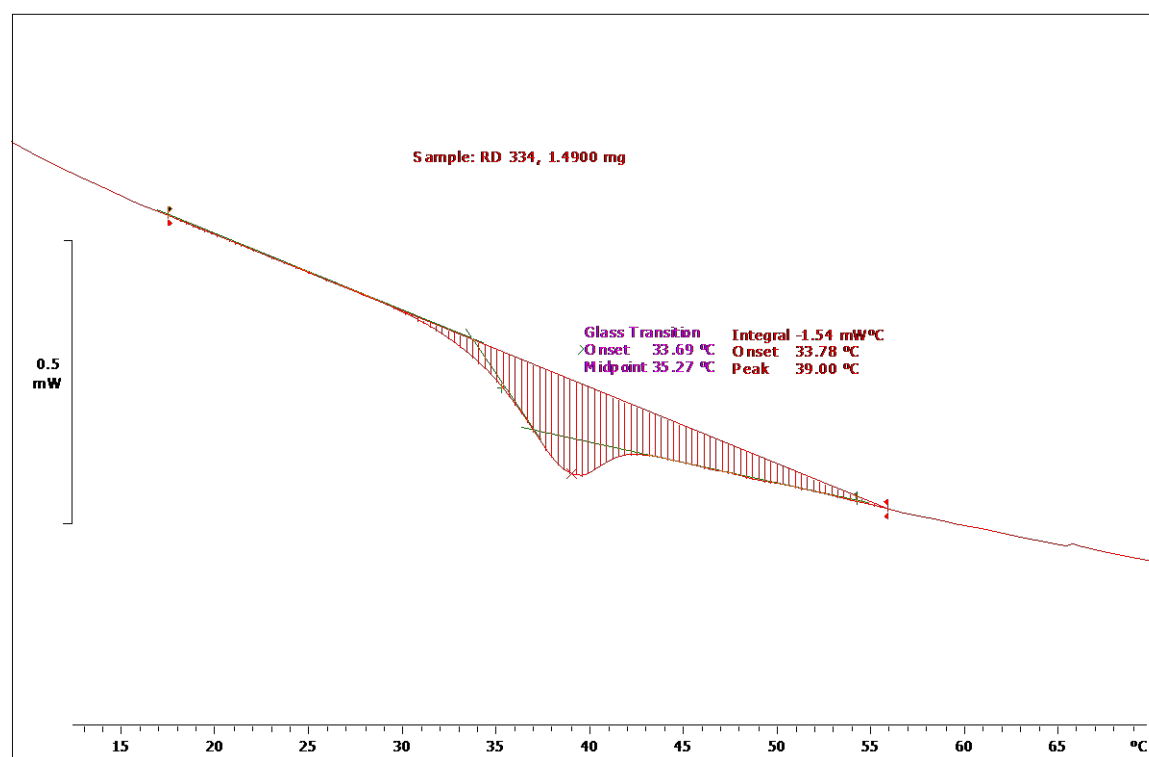


Figure S2. Representative DSC trace of PPC produced by **1**, 2nd heat cycle (Table 1, entry 7).

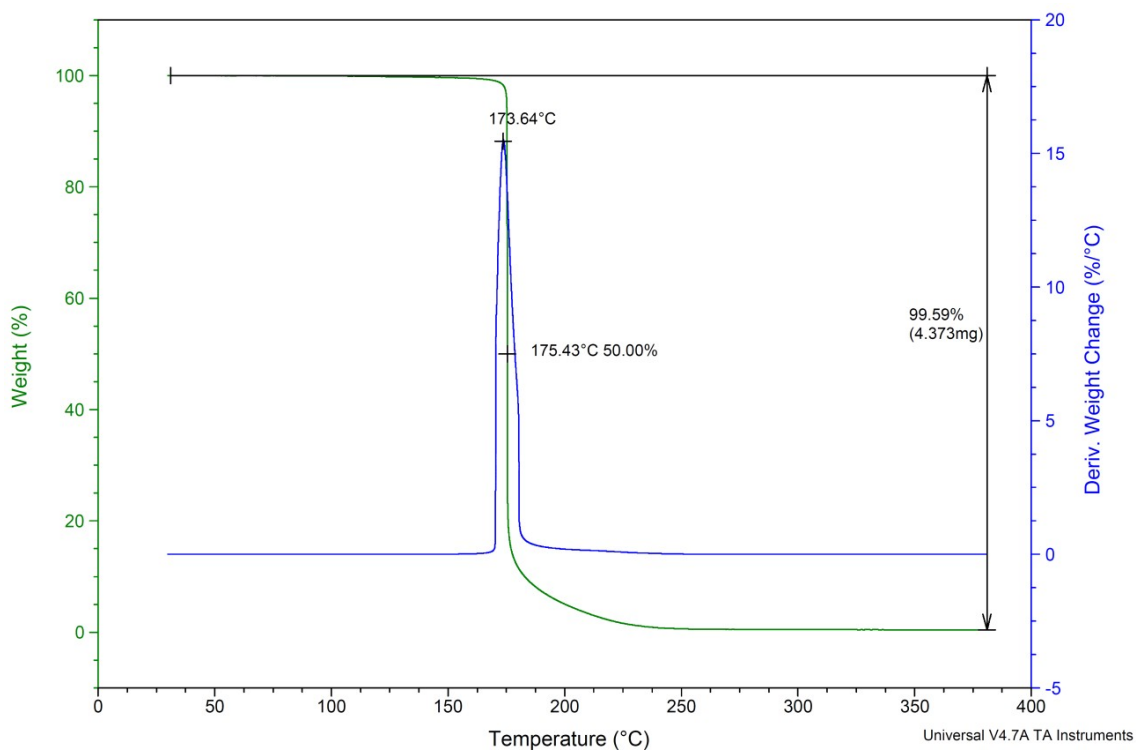


Figure S3. Representative TGA trace and derivative plot of PPC produced by **1** (Table 1, entry 7).

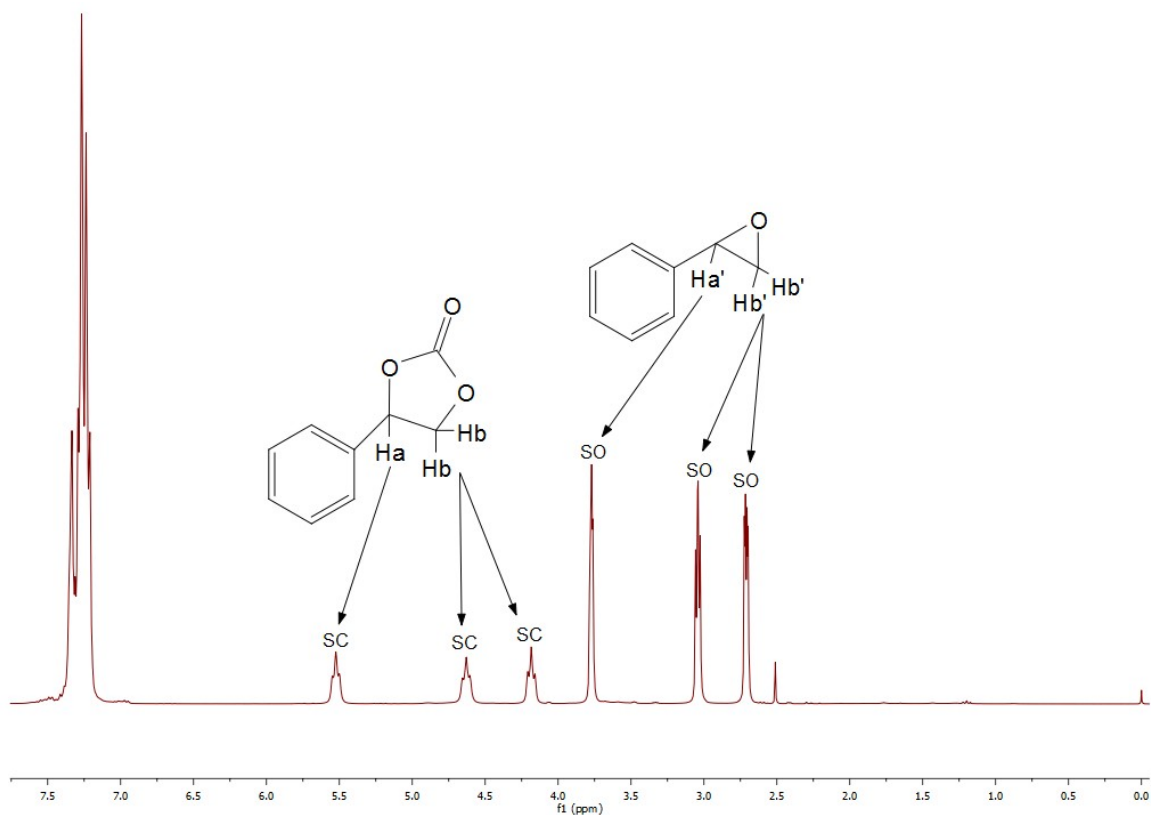


Figure S4. ^1H NMR spectrum of an aliquot from the reaction mixture of SO/CO_2 in CDCl_3 (Table 2, entry 3).