

Supporting Information for
Rare earth metal bis(silylamide) complexes bearing pyridyl-functionalized
indenyl ligand: synthesis, structure and performance in the living polymerization
of L-lactide and *rac*-lactide

Yibin Wang, Yinlin Lei, Shuhui Chi and Yunjie Luo *

Organometallic Chemistry Laboratory, Ningbo Institute of Technology, Zhejiang
University, Ningbo 315100, P. R. China

Corresponding author: E-mail: lyj@nit.zju.edu.cn

Tel: +86-574-88130085

Fax: +86-574-88130130

Contents

Fig S1 Molecular Structure of **2**

Fig S2 Molecular Structure of **3**

Fig S3 ¹H NMR of **1**

Fig S4 ¹³C NMR of **1**

Fig S5 ¹H NMR of **2**

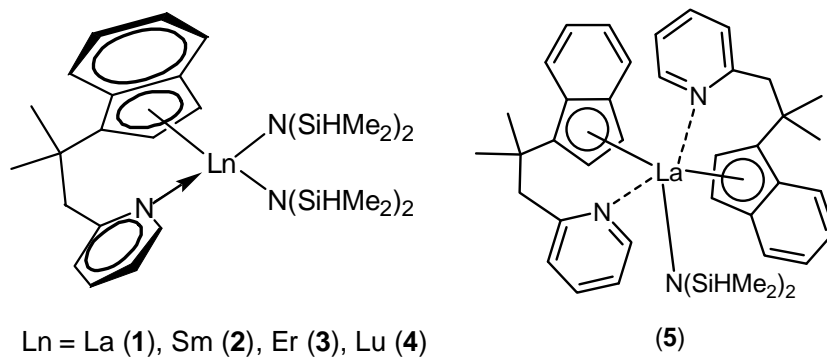
Fig S6 ¹H NMR of **4**

Fig S7 ¹³C NMR of **4**

Fig S8 ¹H-¹³C HMBC spectrum of **4**

Fig S9 ¹H NMR of **5**

Fig S10 ¹³C NMR of **5**



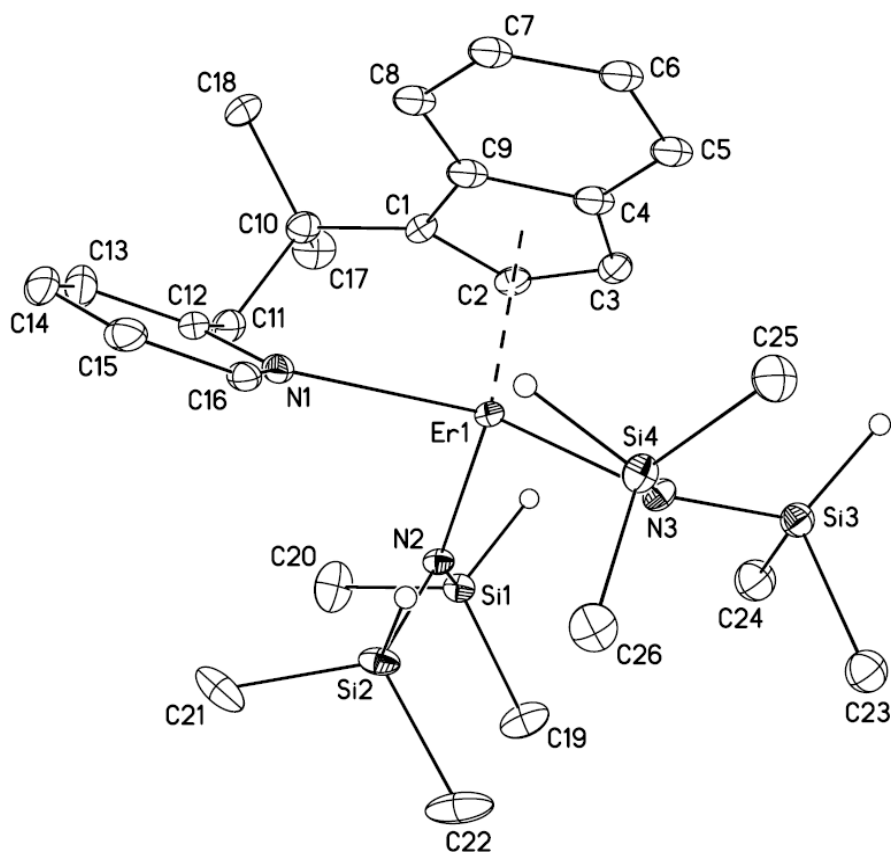


Fig S2. Molecular structure of **3**. Selected bond distances (Å) and bond angles (°) for complex **3**: Er(1)-N(1) 2.513(6), Er(1)-N(2) 2.229(5), Er(1)-N(3) 2.240(5), Er(1)-C(1) 2.674(7), Er(1)-C(2) 2.617(6), Er(1)-C(3) 2.618(7), Er(1)-C(4) 2.664(8), Er(1)-C(9) 2.699(8), C(1)-C(2) 1.404(10), C(2)-C(3) 1.393(10), C(3)-C(4) 1.386(11), C(4)-C(9) 1.455(12), C(1)-C(9) 1.428(9), N(3)-Lu(1)-N(2) 99.2(2), Cp_{centroid}-Er(1) 2.368(11); N(3)-Er(1)-N(2) 99.5(2), Cp_{centroid}-Er(1)-N1 97.6(3).

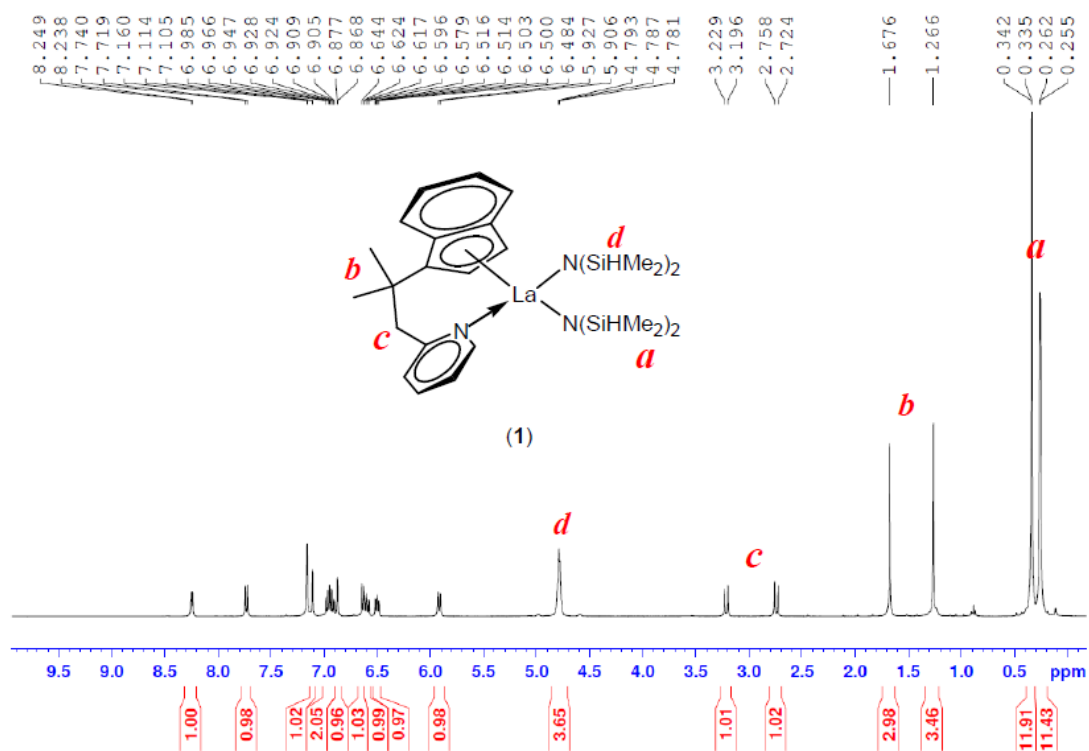


Fig S3. ¹H NMR spectrum of 1

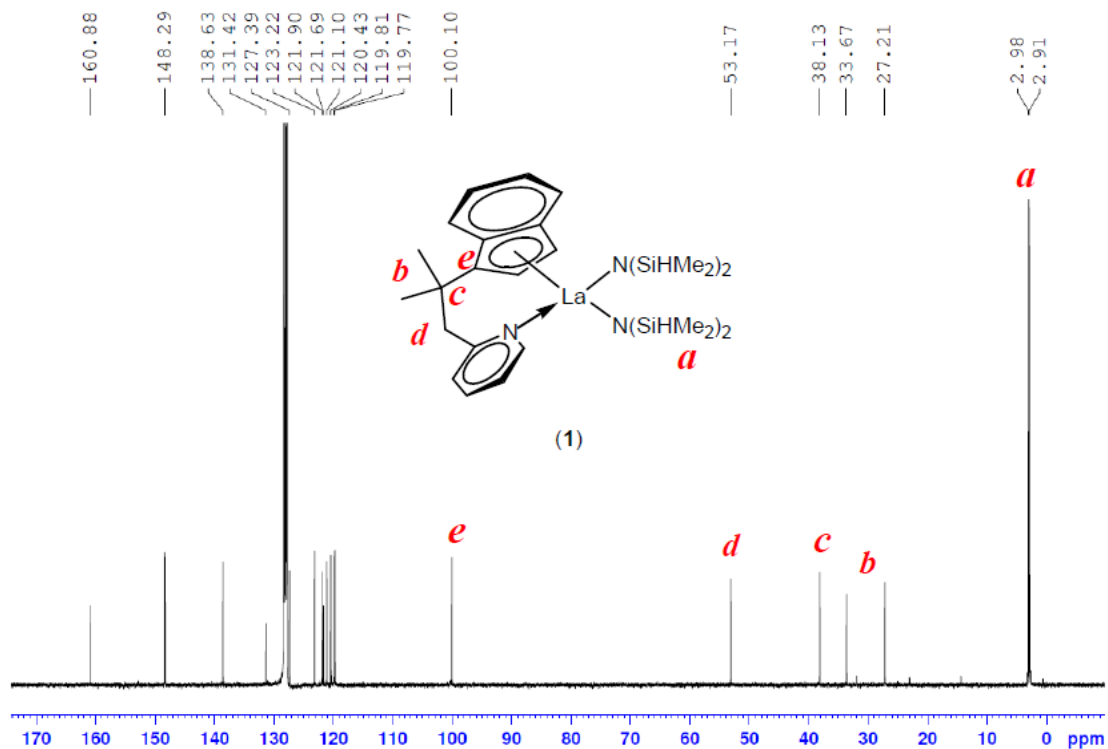


Fig S4. ¹³C NMR spectra of 1

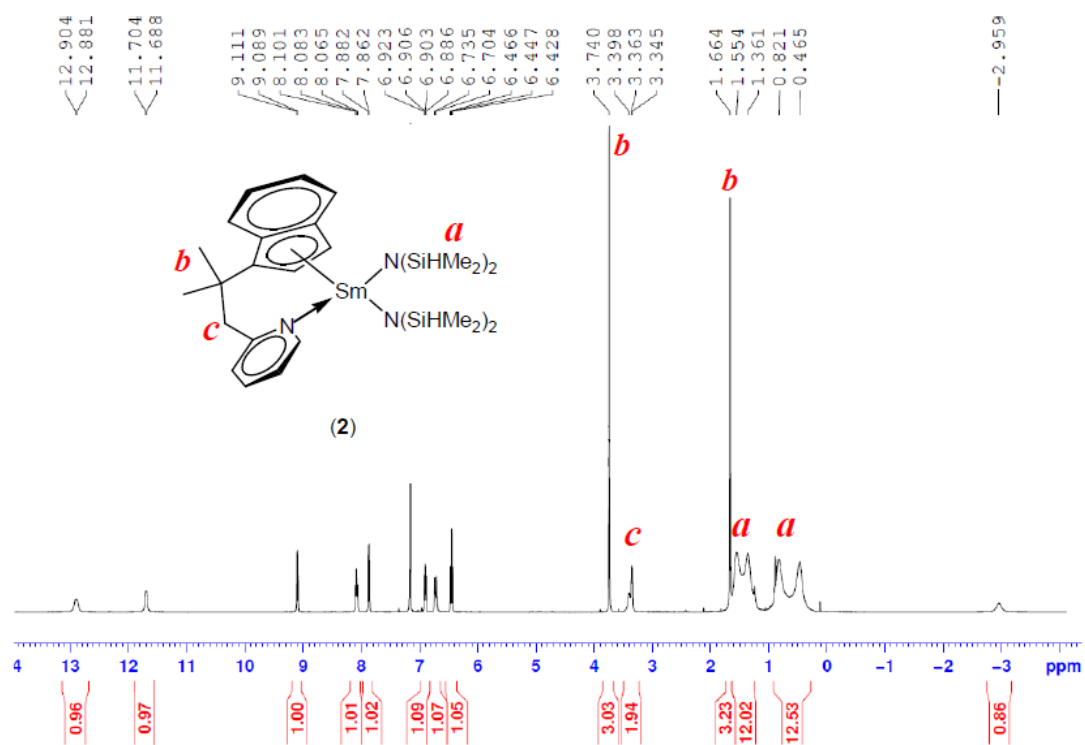


Fig S5. ^1H NMR spectrum of **2**

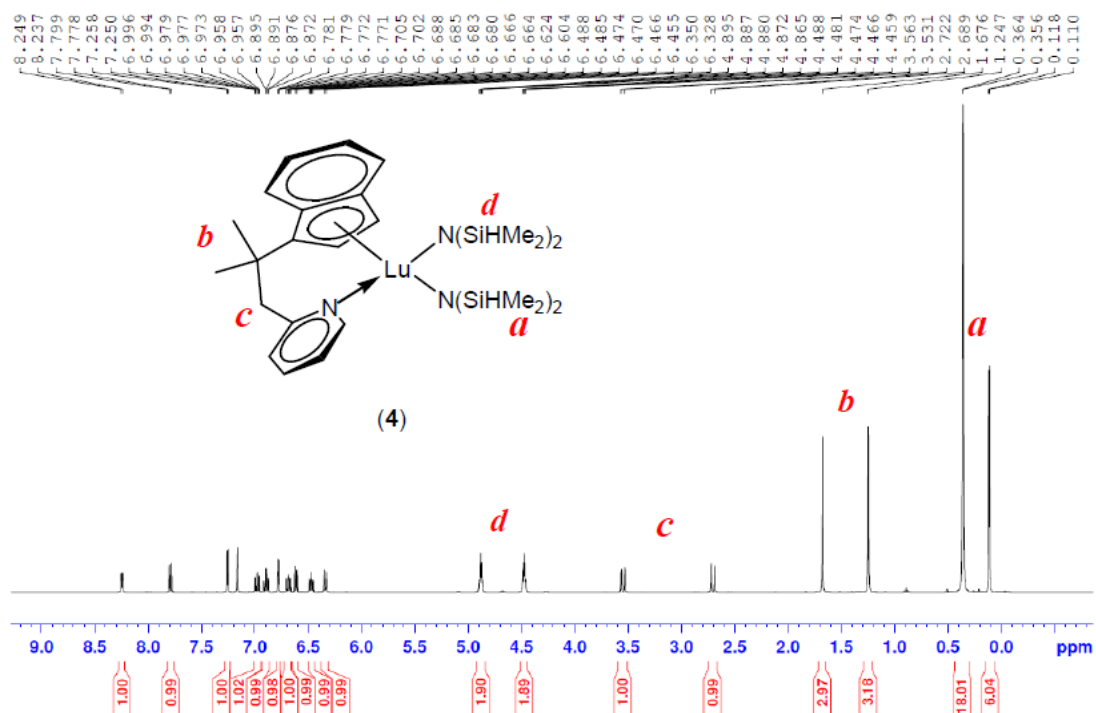


Fig S6. ¹H NMR spectrum of **4**

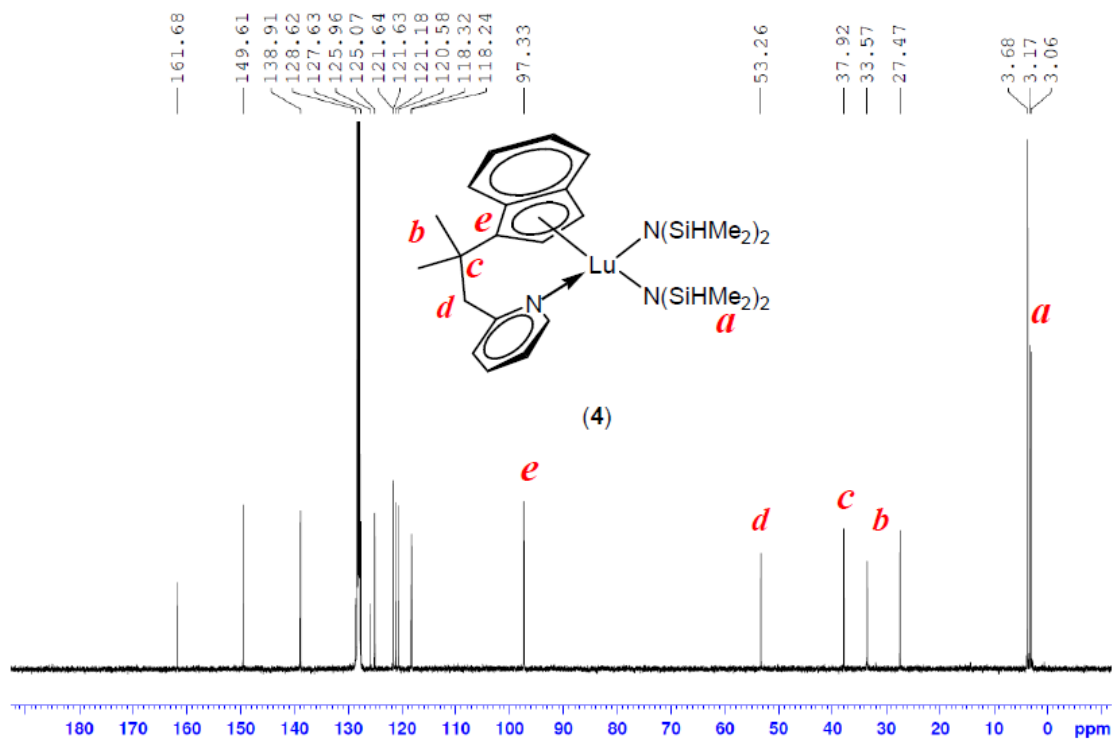


Fig S7. ¹³C NMR spectra of **4**

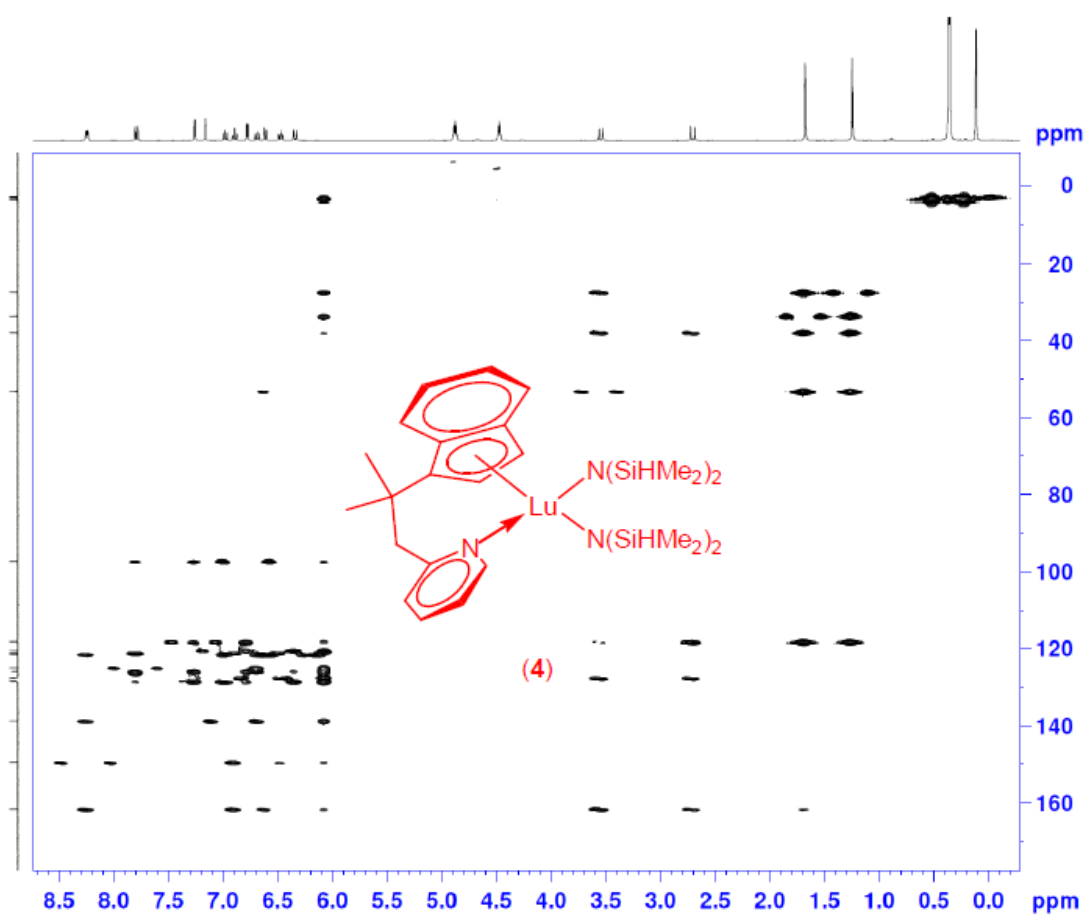


Fig S8. ^1H - ^{13}C HMBC spectrum of **4**

