

Electronic Supplementary Information (ESI)

Supramolecular architectures of novel chromium(III) oxalate complexes: steric effects of the ligand size and building-blocks approach

Lidija Androš, Marijana Jurić,* Krešimir Molčanov and Pavica Planinić*

Ruđer Bošković Institute, Bijenička cesta 54, 10000 Zagreb, Croatia.

E-mail: Marijana.Juric@irb.hr and planinic@irb.hr

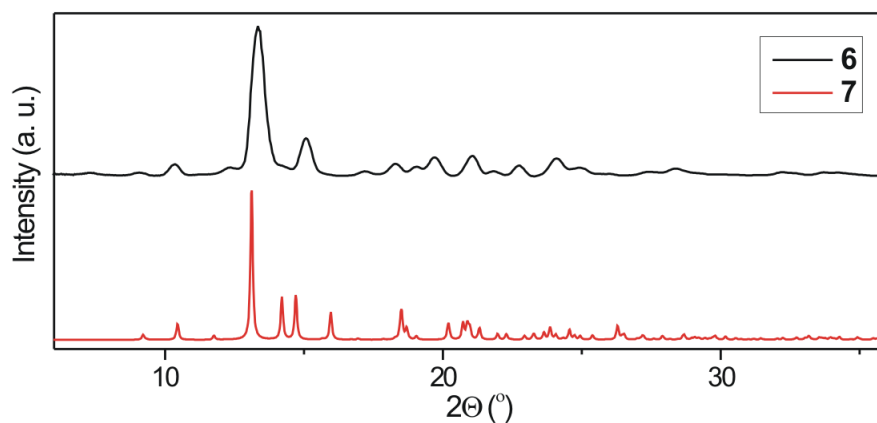


Fig. S1 The X-ray powder diffraction patterns of **6** and **7**. The pattern of **7** is simulated from its single crystal diffraction data.

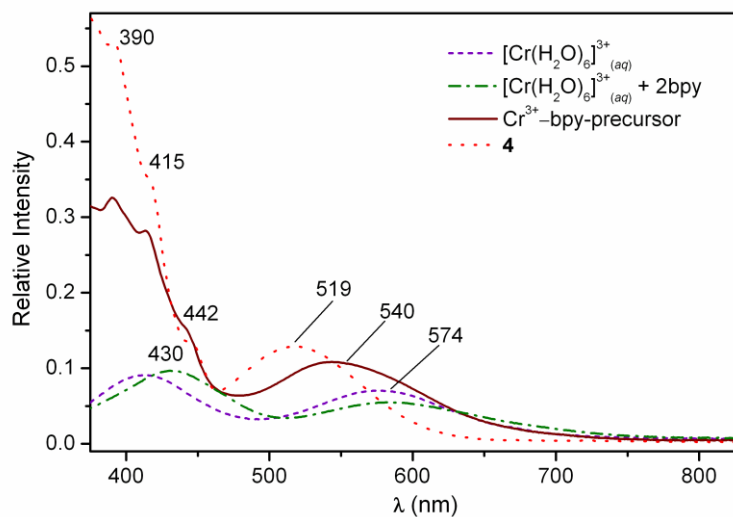


Fig. S2 Electronic spectra demonstrating the changes in the coordination sphere of chromium(III) ions during the procedure of synthesis of compound **4**. The Cr³⁺-precursor complex is formed after the solution containing Cr³⁺ and bpy was refluxed in the microwave reactor.