

Supplementary Information

Dinuclear aluminum complexes supported by amino- or imino-phenolate ligands: synthesis, structures, and ring-opening polymerization catalysis of *rac*-lactide

Xiao-Feng Yu and Zhong-Xia Wang*

CAS Key Laboratory of Soft Matter Chemistry and Department of Chemistry, University of Science and Technology of China, Hefei, Anhui 230026, People's Republic of China. E-mail: zxwang@ustc.edu.cn

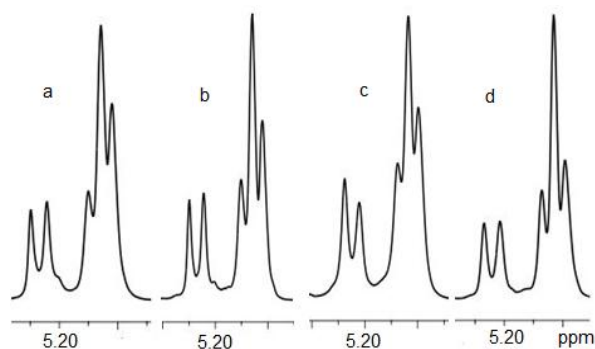


Fig. S1. Homonuclear decoupled ¹H NMR spectra (CDCl₃, 25°C) of the methine range of PLA obtained from *rac*-LA. (a) (Table 1, entry 2) *Pi* = 0.50; (b) (Table 1, entry 3) *Pi* = 0.51; (c) (Table 1, entry 9) *Pi* = 0.50; (d) (Table 1, entry 10) *Pi* = 0.54.