

## Supporting Information

### Guest Induced Morphological Transformation from Nanospheres to Nanowires by Multiple Charged Hydrogen Bond Self-assembly

Lijie Qin,<sup>a</sup> Hong Yang,<sup>a\*</sup> Changyuan Qin,<sup>a</sup> Zheyuan Xiang,<sup>a</sup> Mingming Zhang,<sup>b</sup>  
Liang Ding,<sup>a</sup> Tao Yi,<sup>b</sup> Shiping Yang<sup>b\*</sup>

<sup>a</sup>The Key Laboratory of Resource Chemistry of Ministry of Education & Shanghai Key Laboratory of Rare Earth Functional Materials, Department of Chemistry, Shanghai Normal University, Shanghai 200234, (P. R. China); <sup>b</sup>Department of Chemistry, Fudan University, Shanghai 200433 (P. R. China).

Corresponding author. Fax: 86-21-64322343; Tel: 86-21-64322343.

E-mail address: yanghong@shnu.edu.cn (T. Yi); shipingy@shnu.edu.cn (S. Yang).

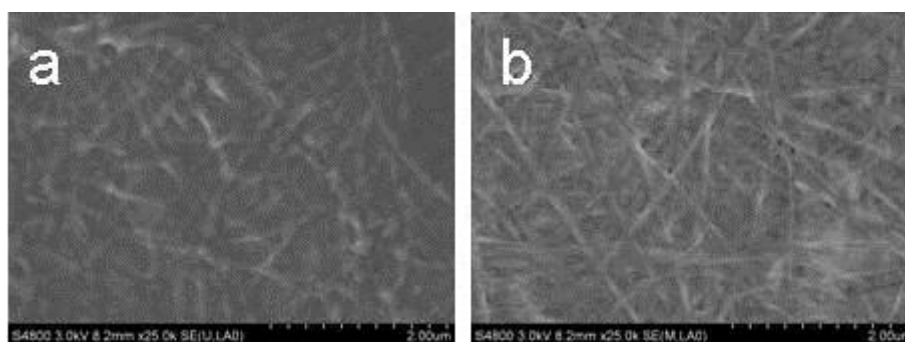


Figure S1 The typical SEM images of nanowires induced by bis(imidazoline) (a) and 4-(2-aminoethyl)diethylenetriamine (b).

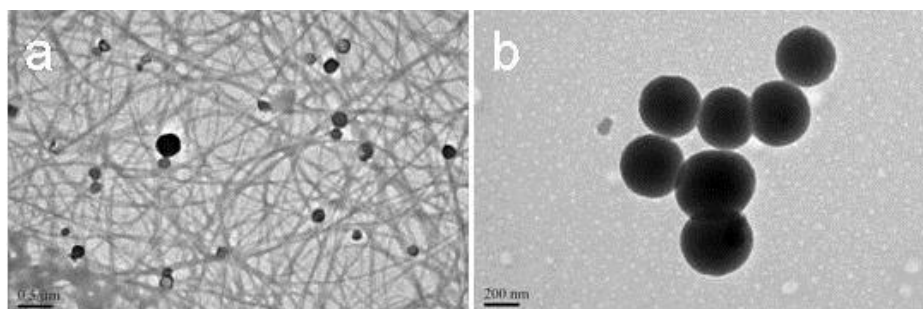


Figure S2 The typical TEM of: (a) NP-5; (b) NP-6.

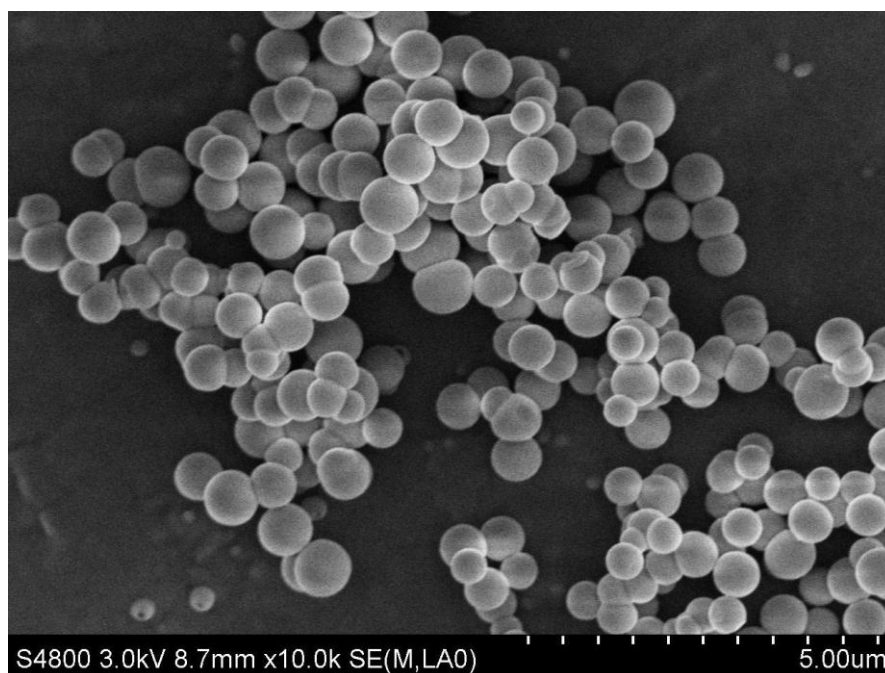


Figure S3 SEM of nanospheres obtained from  $[\text{Ir}(\text{ppy})_2(\text{Hdcbpy})]$  (6.40 mM)

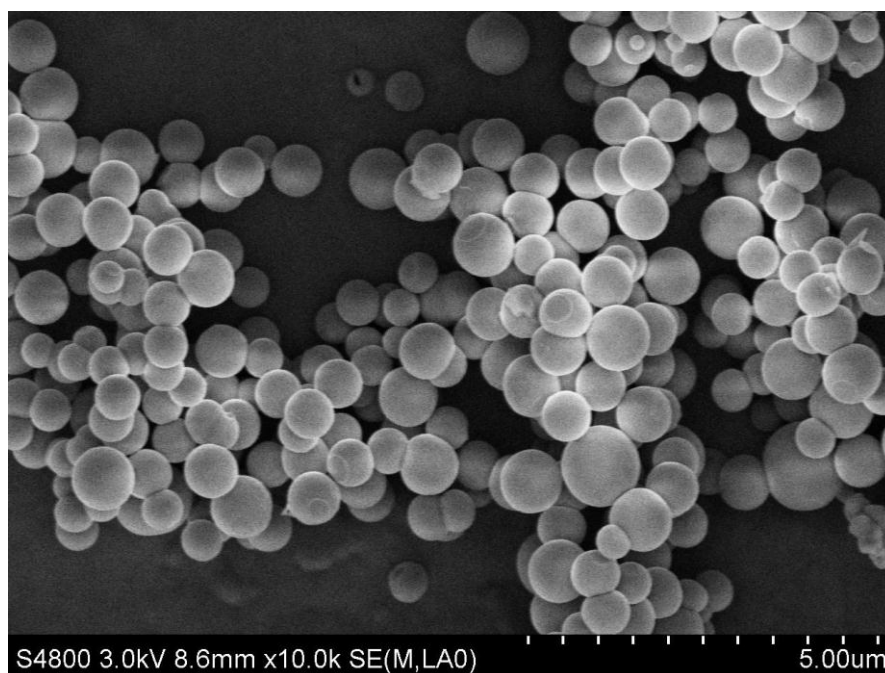


Figure S4 SEM of nanospheres obtained from  $[\text{Ir}(\text{ppy})_2(\text{Hdcbpy})]$  (4.80 mM)

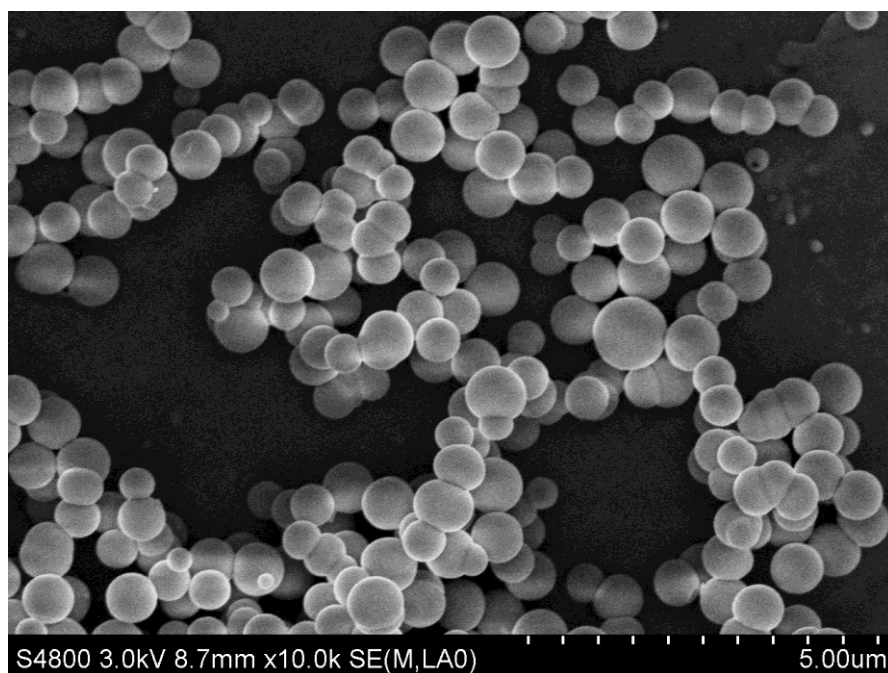


Figure S5 SEM of nanospheres obtained from  $[\text{Ir}(\text{ppy})_2(\text{Hdcbpy})]$  (3.84 mM)

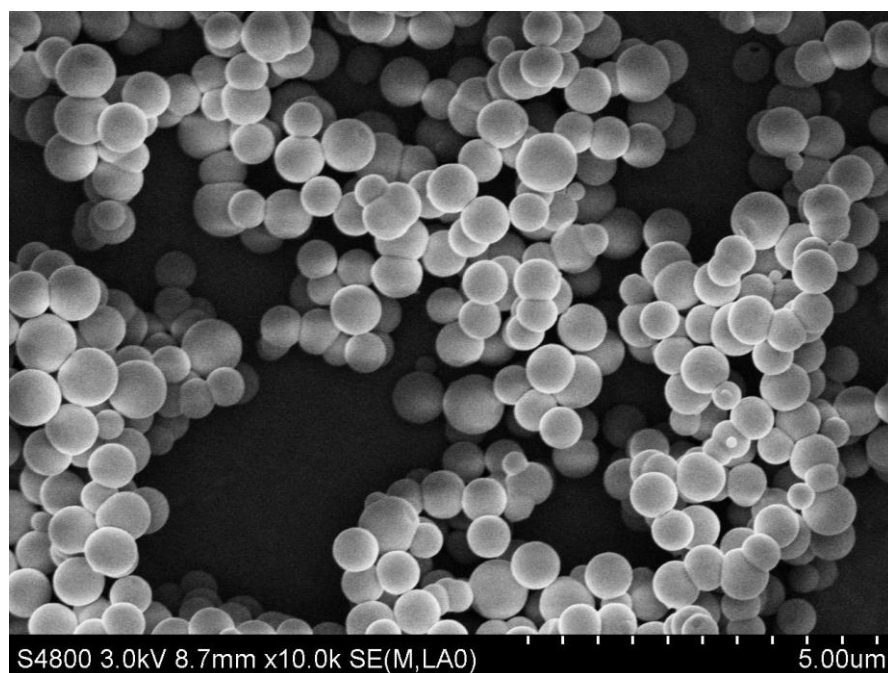


Figure S6 SEM of nanospheres obtained from  $[\text{Ir}(\text{ppy})_2(\text{Hdcbpy})]$  (3.20 mM)

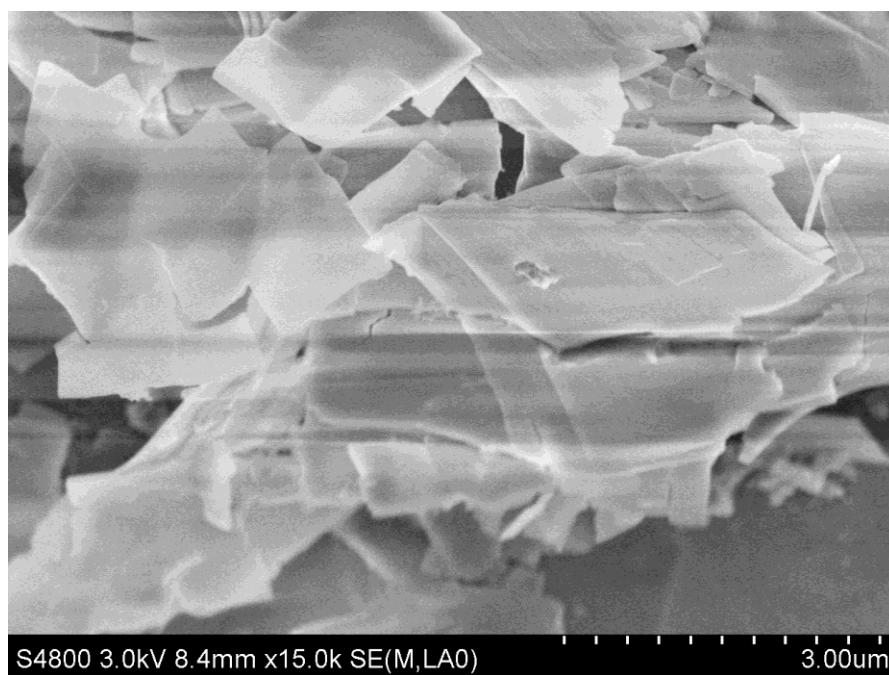


Figure S7 SEM of nanospheres obtained from  $[\text{Ir}(\text{ppy})_2(\text{Nadcbpy})]$  (9.60 mM)