

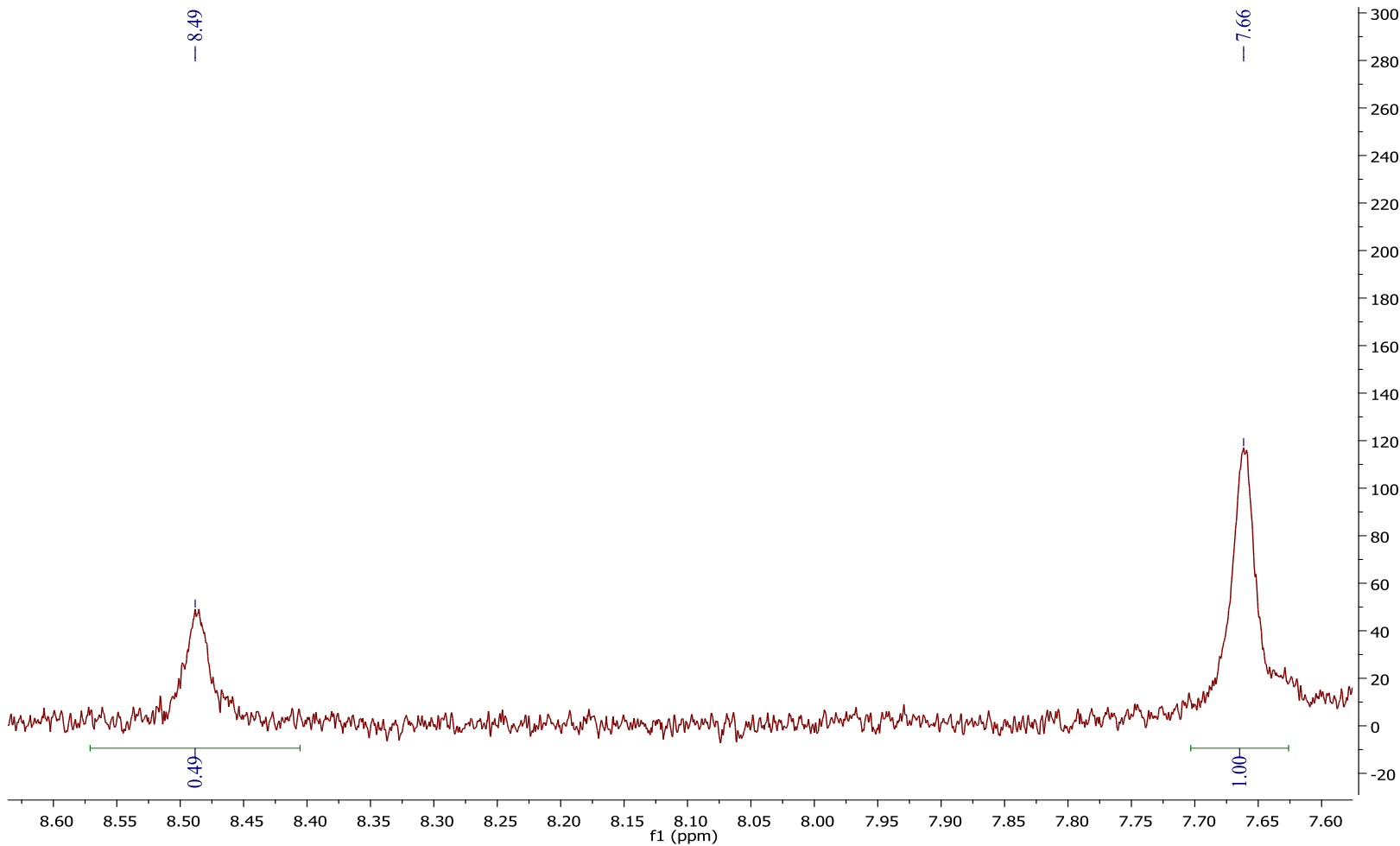
Supporting Information

Half-sandwich rhodium and iridium complexes containing homoquiral imidazolyl-imine ligands: synthesis, characterization and catalytic applications

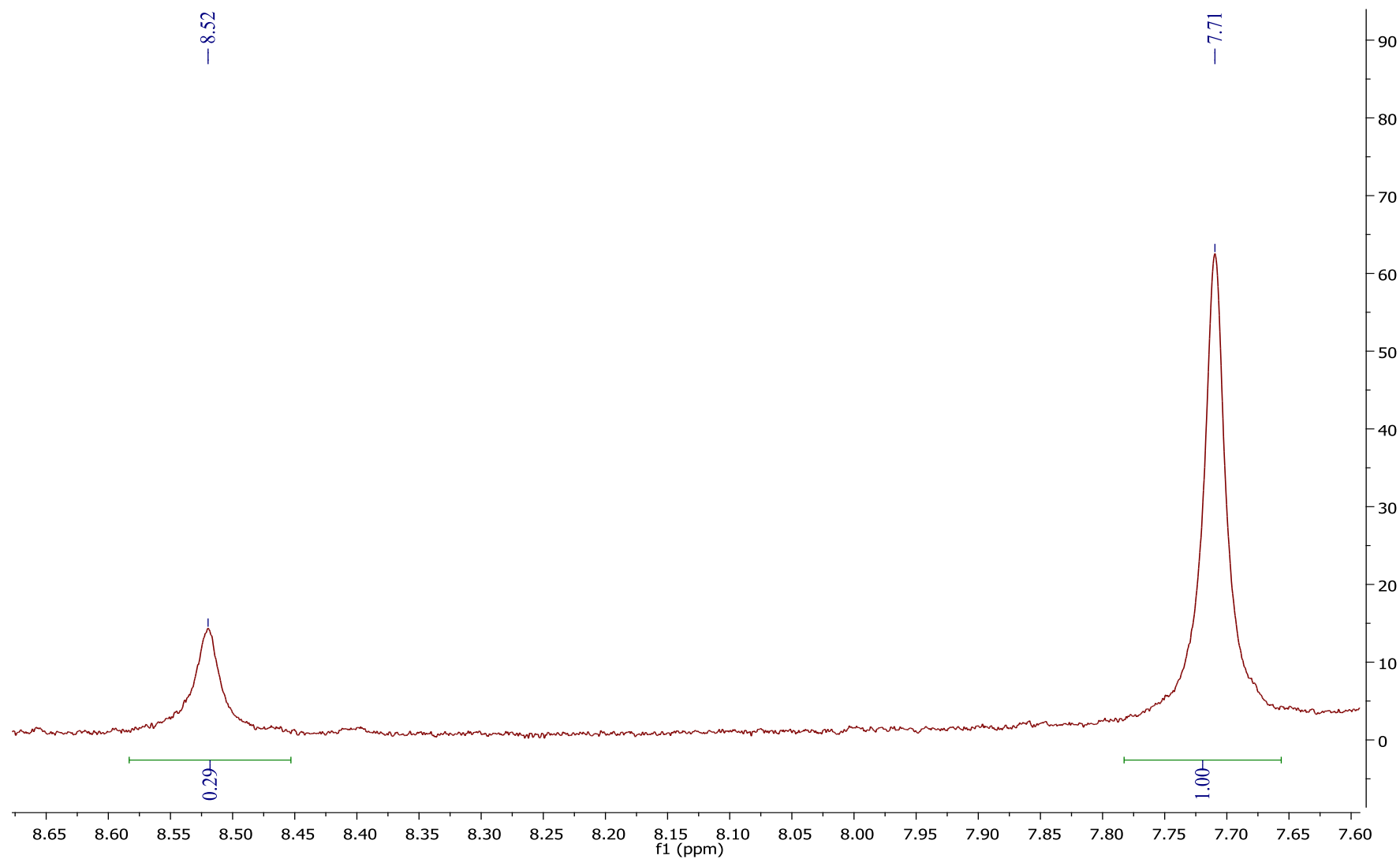
Alexandra Becerra, Raúl Contreras, Daniel Carmona, Fernando J. Lahoz, and Pilar García-Orduña

^1H NMR data, at low temperature, in the HN=C region for the aqua-complexes 7-12

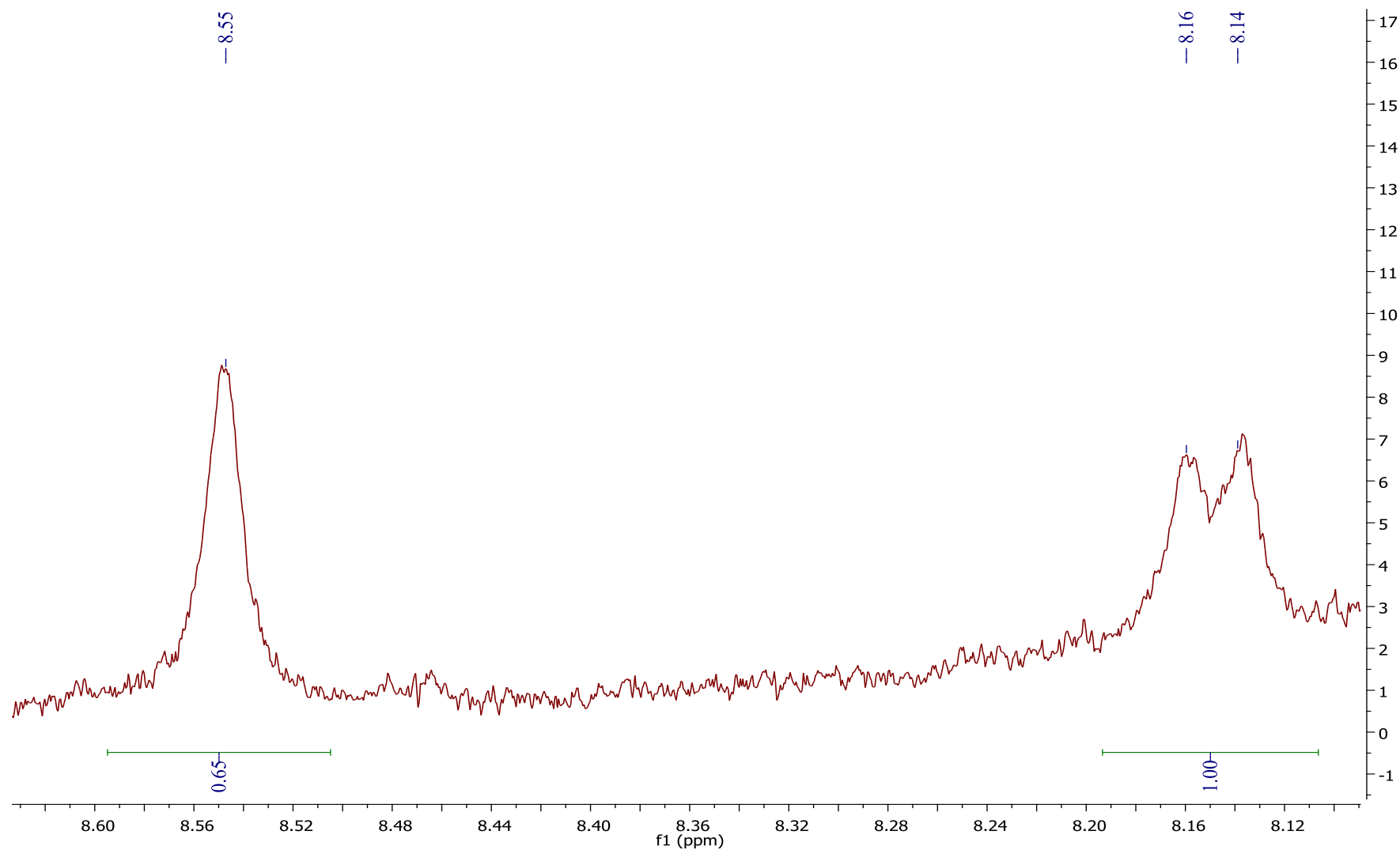
Complex **7**, ^1H , 300 MHz, CD_2Cl_2 , 183 K



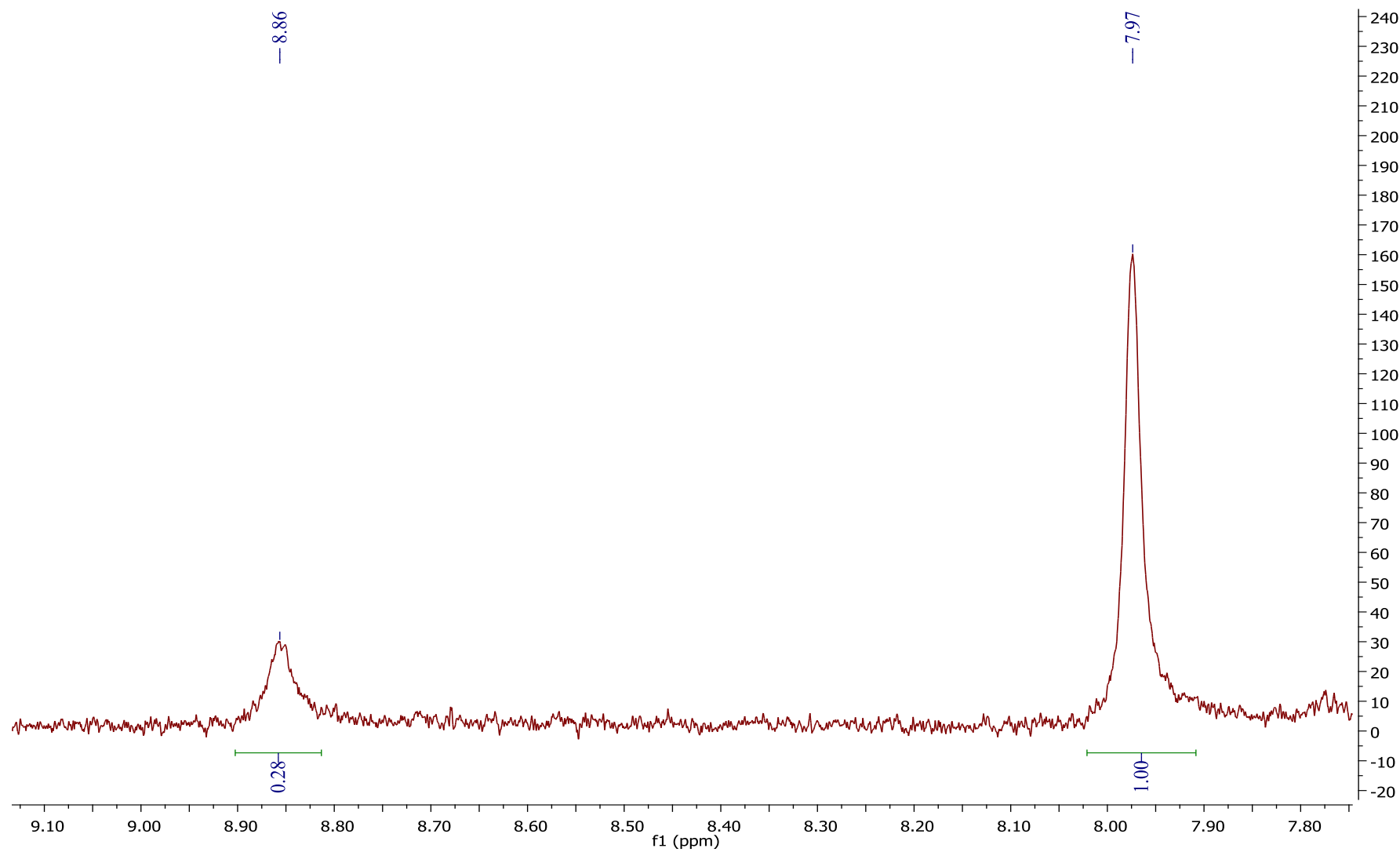
Complex **8**, ^1H NMR, 400 MHz, CD_2Cl_2 , 183 K



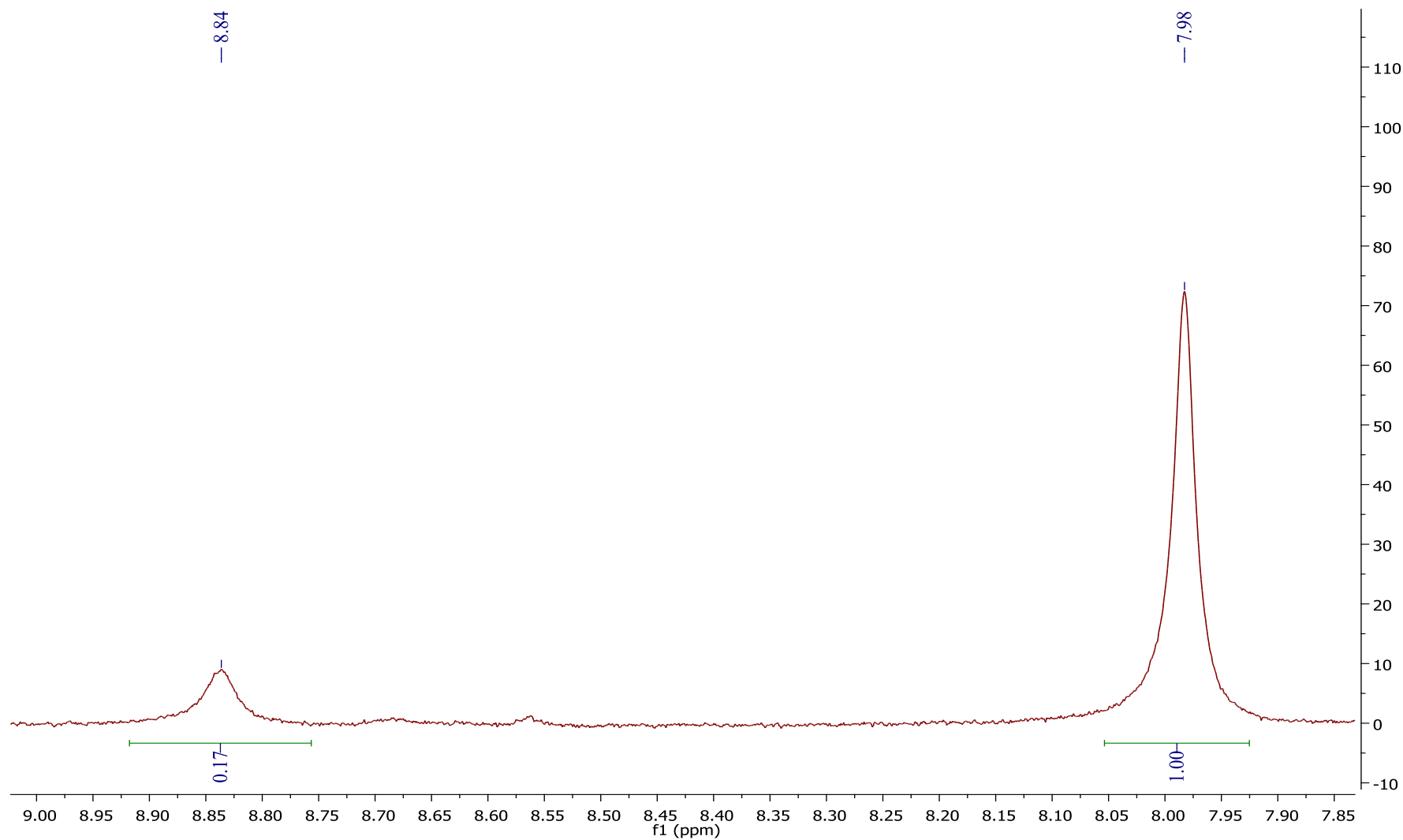
Complex **9**, ^1H , 400 MHz, CD_2Cl_2 , 183 K



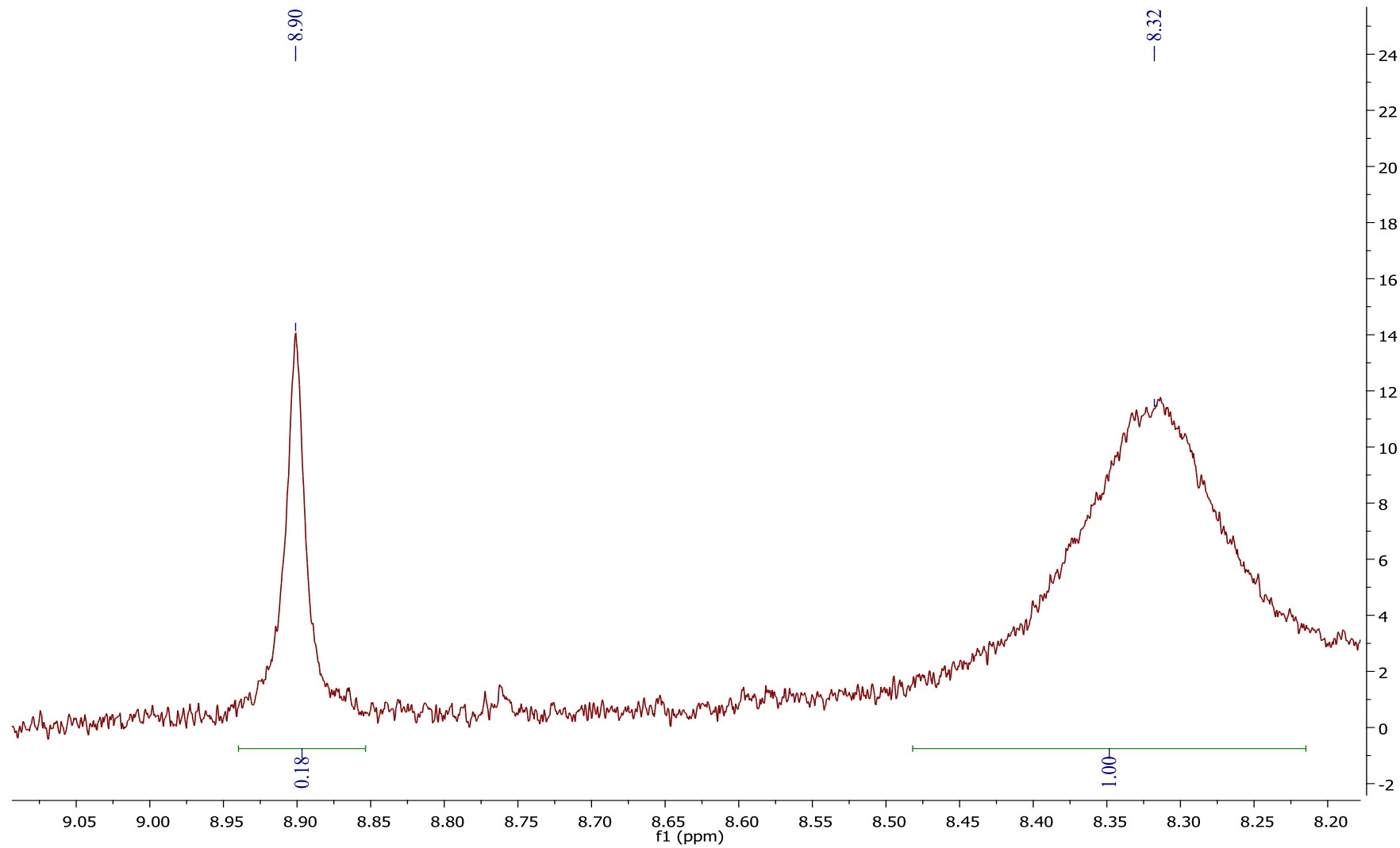
Complex **10**, ^1H NMR, 300 MHz, CD_2Cl_2 , 183 K



Complex **11**, ^1H NMR, 400 MHz, CD_2Cl_2 , 193 K

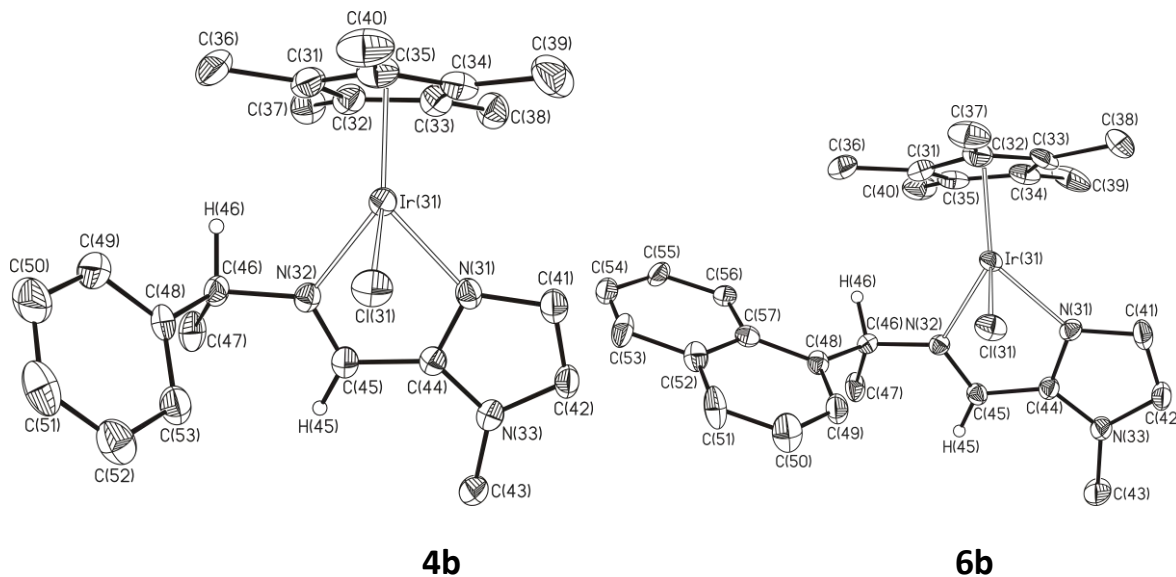


Complex **12**, ^1H NMR, 400 MHz, CD_2Cl_2 , 223 K



Crystallographic data

Molecular structure of the epimers **4b** and **6b** of complexes **4** and **6**. Only hydrogen atoms bonded to the stereogenic centres and to the iminic carbon C(45) have been represented.



Molecular structure of the cation of complex **10**

