

Electric Supporting Information for

Steric effect involved in $\text{Ln}^{3+}/\text{Ce}^{3+}$ exchange in a coordination polymer based on di(2-ethylhexyl) phosphoric acid

Yuiko Tasaki-Handa,* Yukie Abe, Kenta Ooi, Mikiya Tanaka, and Akihiro Wakisaka

*Research Institute for Environmental Management Technology, National Institute of Advanced Industrial Science and Technology (AIST)
Onogawa 16-1, Tsukuba, Ibaraki, Japan. Fax: +81-29-861-8252; Tel: +81-29-861-8772; E-mail: yuiko-tasaki@aist.go.jp*

Figure S1 shows SEM images of $[\text{Nd}(\text{dehp})_3]$ (a), $[\text{Gd}(\text{dehp})_3]$ (b), $[\text{Dy}(\text{dehp})_3]$ (c), and $[\text{Lu}(\text{dehp})_3]$ (d) that were prepared by mixing LnCl_3 ($\text{Ln}=\text{Nd}$, Gd , Dy , or Lu) and di(2-ethylhexyl)phosphoric acid (Hdehp) in an 80:20 (vol%) ethanol/water binary mixture. They are aggregates of rod-like crystals. The size of crystals becomes smaller in the order $[\text{Nd}(\text{dehp})_3] > [\text{Gd}(\text{dehp})_3] > [\text{Dy}(\text{dehp})_3] > [\text{Lu}(\text{dehp})_3]$.

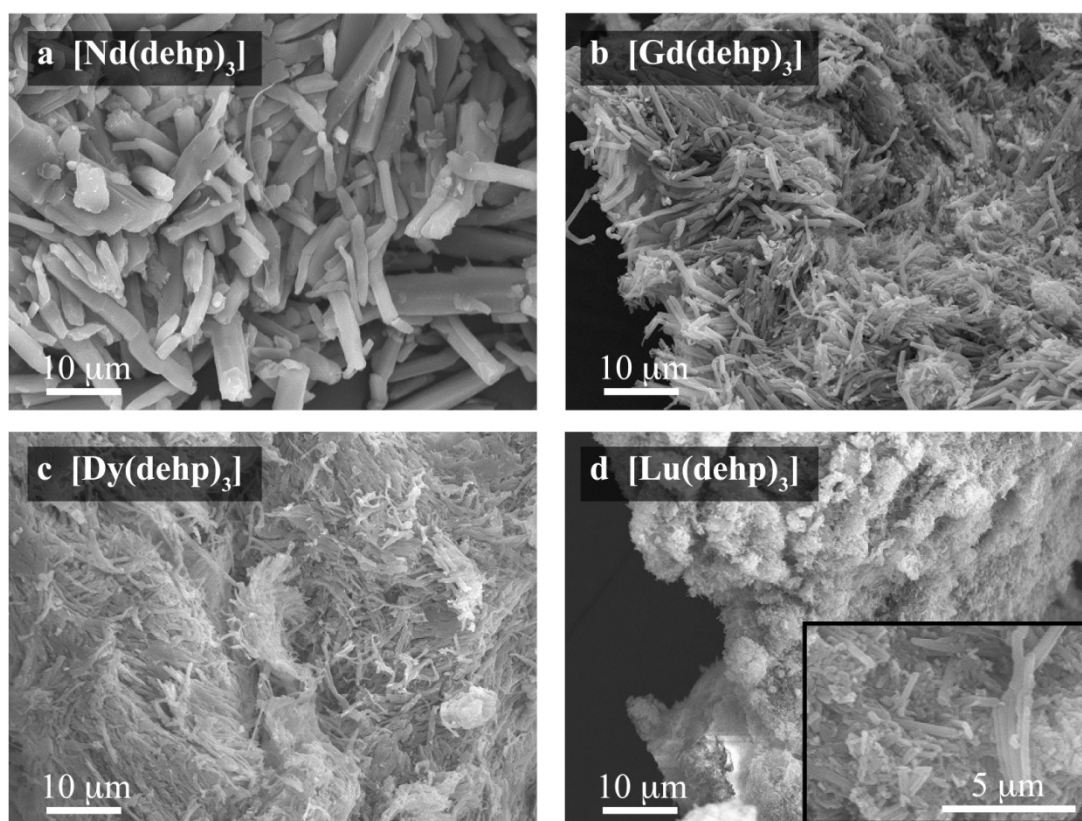


Figure S1 SEM images of $[\text{Nd}(\text{dehp})_3]$ (a), $[\text{Gd}(\text{dehp})_3]$ (b), $[\text{Dy}(\text{dehp})_3]$ (c), and $[\text{Lu}(\text{dehp})_3]$ (d) at a magnification of 1500.