

Electric Supporting Information for

**Lanthanide Ion Exchange Properties of Coordination Polymer
Consisting of di(2-Ethylhexyl) Phosphoric Acid and Trivalent
Metal Ions (Ce^{3+} , Fe^{3+} , or Al^{3+})**

Kenta Ooi, Yuiko Tasaki-Handa,* Yukie Abe, and Akihiro Wakisaka

*Research Institute for Environmental Management Technology, National Institute of Advanced Industrial Science and
Technology (AIST) Onogawa 16-1, Tsukuba, Ibaraki, Japan. Fax: +81-29-861-8252; Tel: +81-29-861-8772;
E-mail: yuiko-tasaki@aist.go.jp*

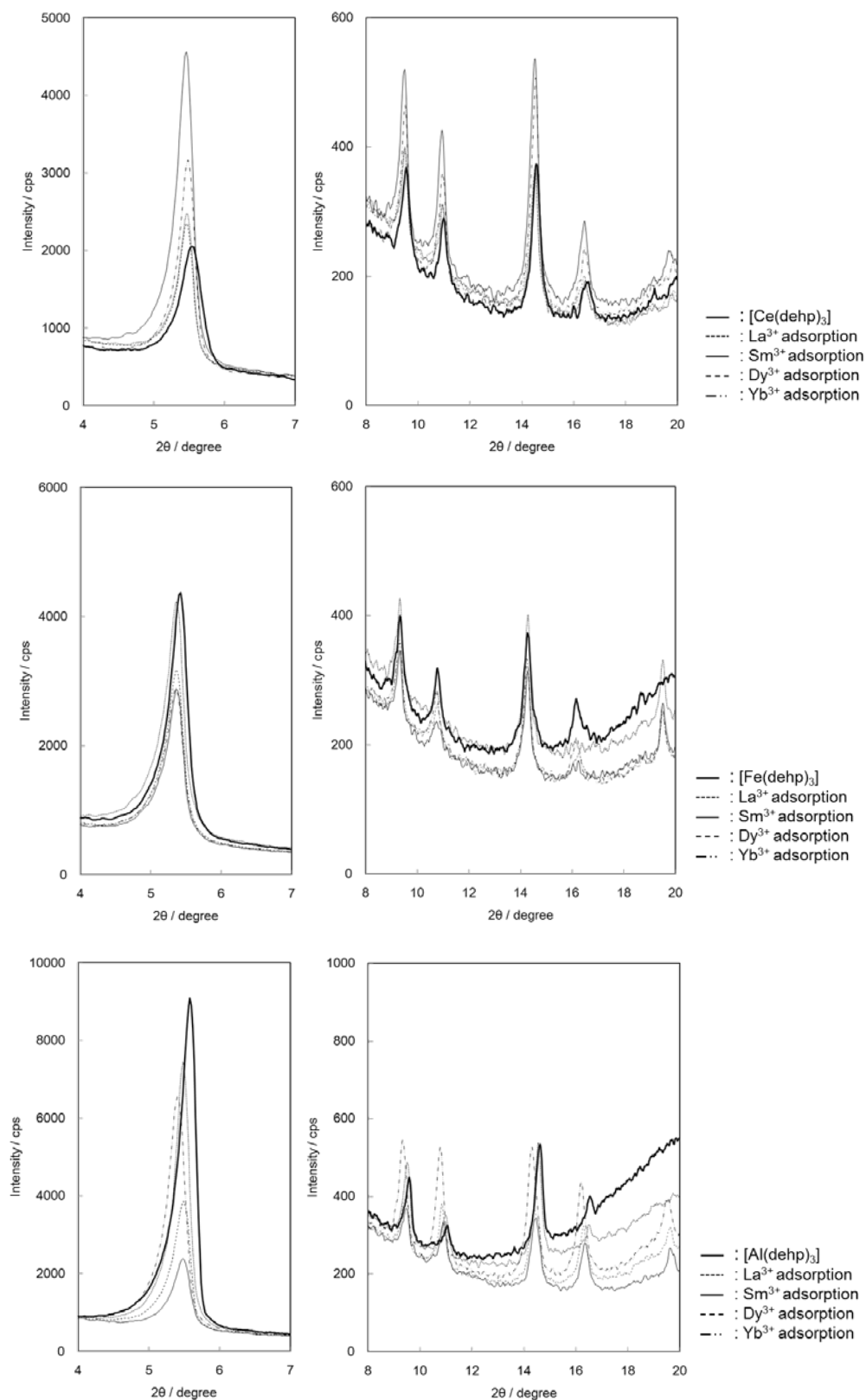


Figure S1. XRD patterns of [M(dehp)₃] before and after Ln³⁺ adsorption.

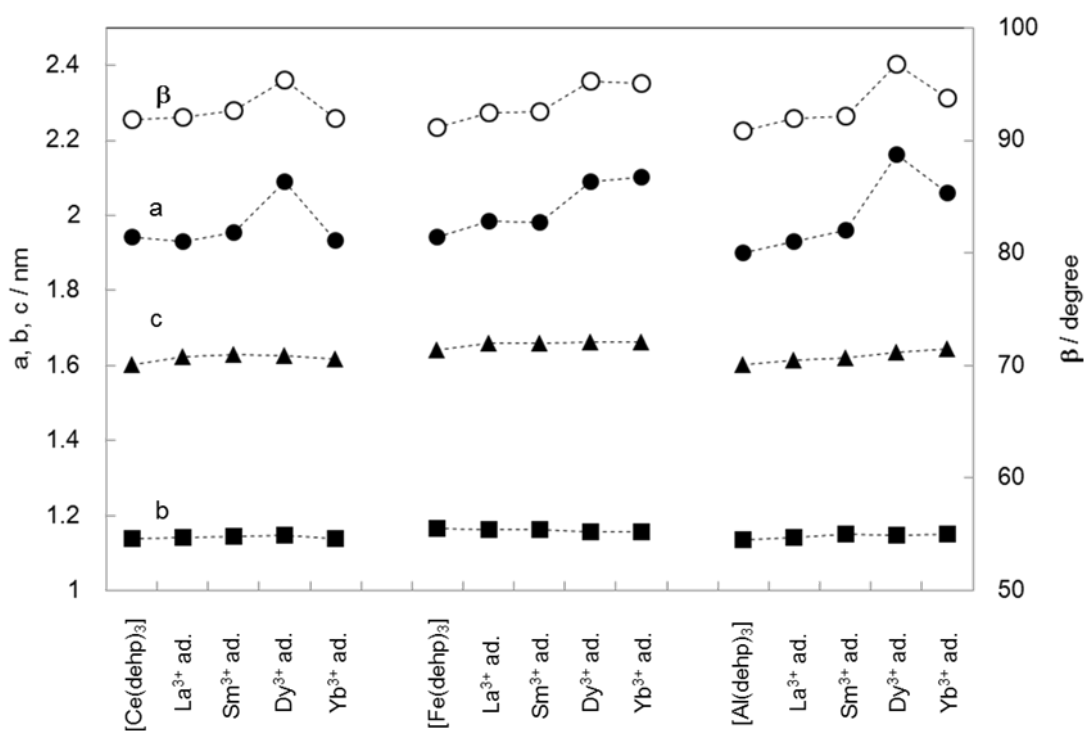


Figure S2. Lattice parameters of $[M(\text{dehp})_3]$ before and after Ln^{3+} adsorption

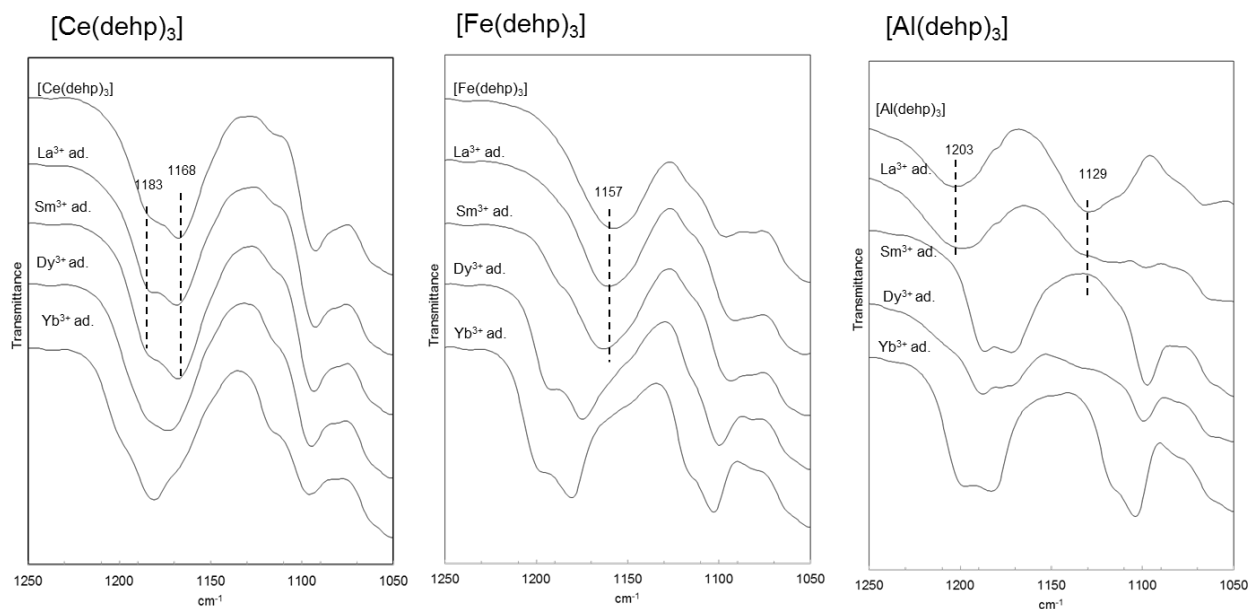
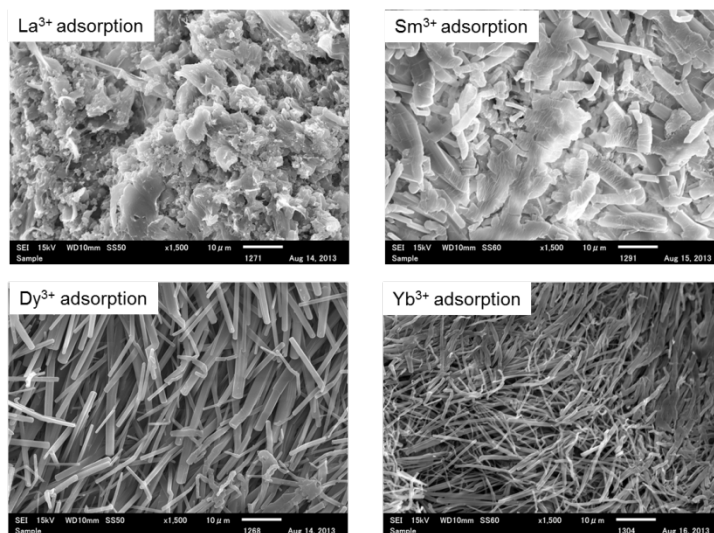
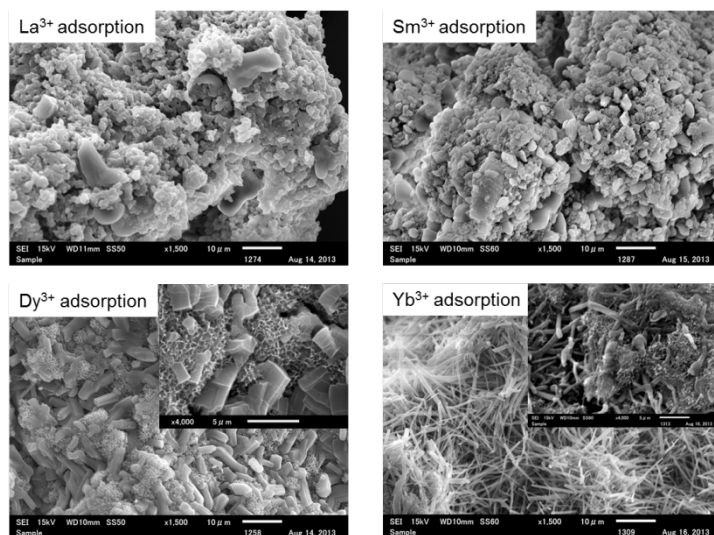


Figure S3. FT-IR spectra of $[M(\text{dehp})_3]$ before and after Ln^{3+} adsorption.

[Ce(dehp)₃]



[Fe(dehp)₃]



[Al(dehp)₃]

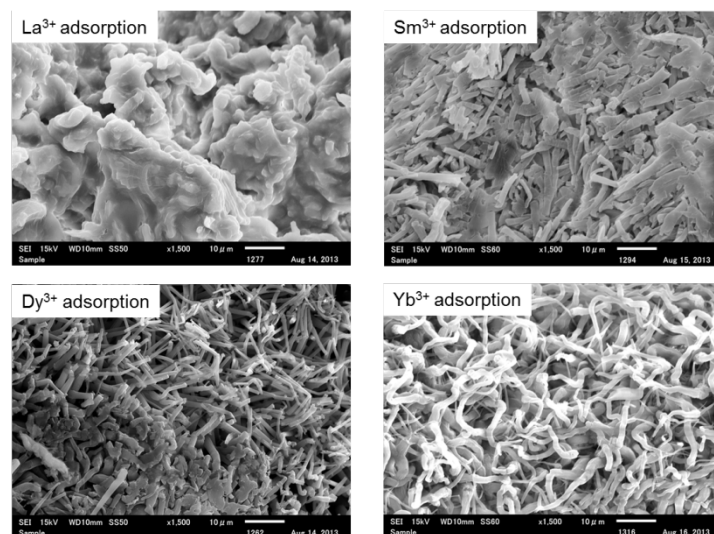


Figure S4. SEM images of [M(dehp)₃] after Ln³⁺ adsorption