

Supporting Information

For

Novel Surfactant-Free Route to Delaminated All-Silica and Titanosilicate Zeolites Derived from a Layered Borosilicate MWW Precursor

Xiaoying Ouyang ¹, Ying-Jen Wanglee ¹, Son-Jong Hwang ², Xie Dan ³, Thomas Rea ³, Stacey I. Zones ¹,
³, Alexander Katz ¹

¹ Department of Chemical and Biomolecular Engineering, University of California at Berkeley, Berkeley,
California 94720

² Department of Chemical Engineering, California Institute of Technology, Pasadena, California 91125

³ Chevron Energy Technology Company, Richmond, California 94804

ERB-1P

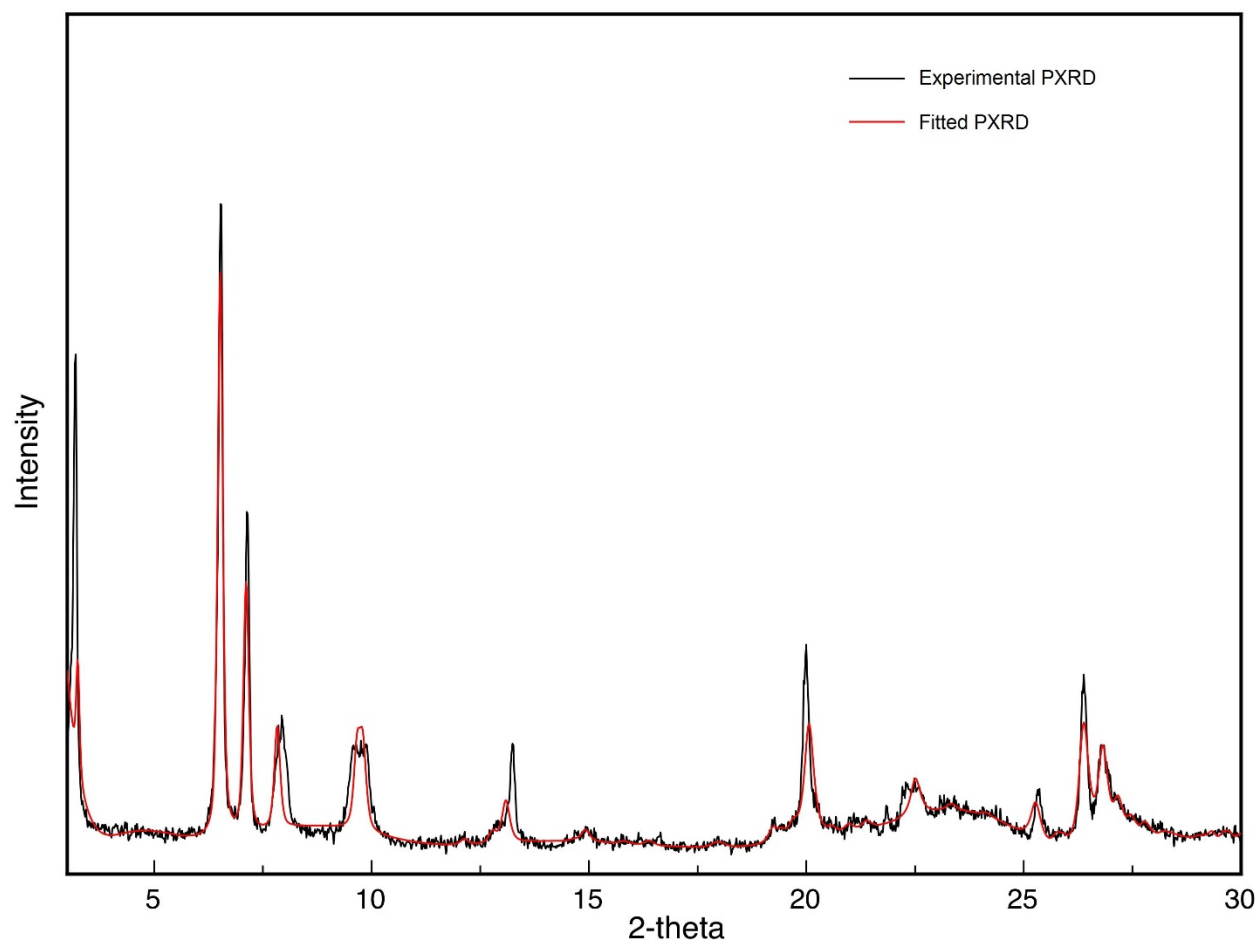


Figure S1. The whole-pattern profile-fitting of the PXRD pattern of ERB-1P. Curvefit parameters are in Table 1.

ERB-1C

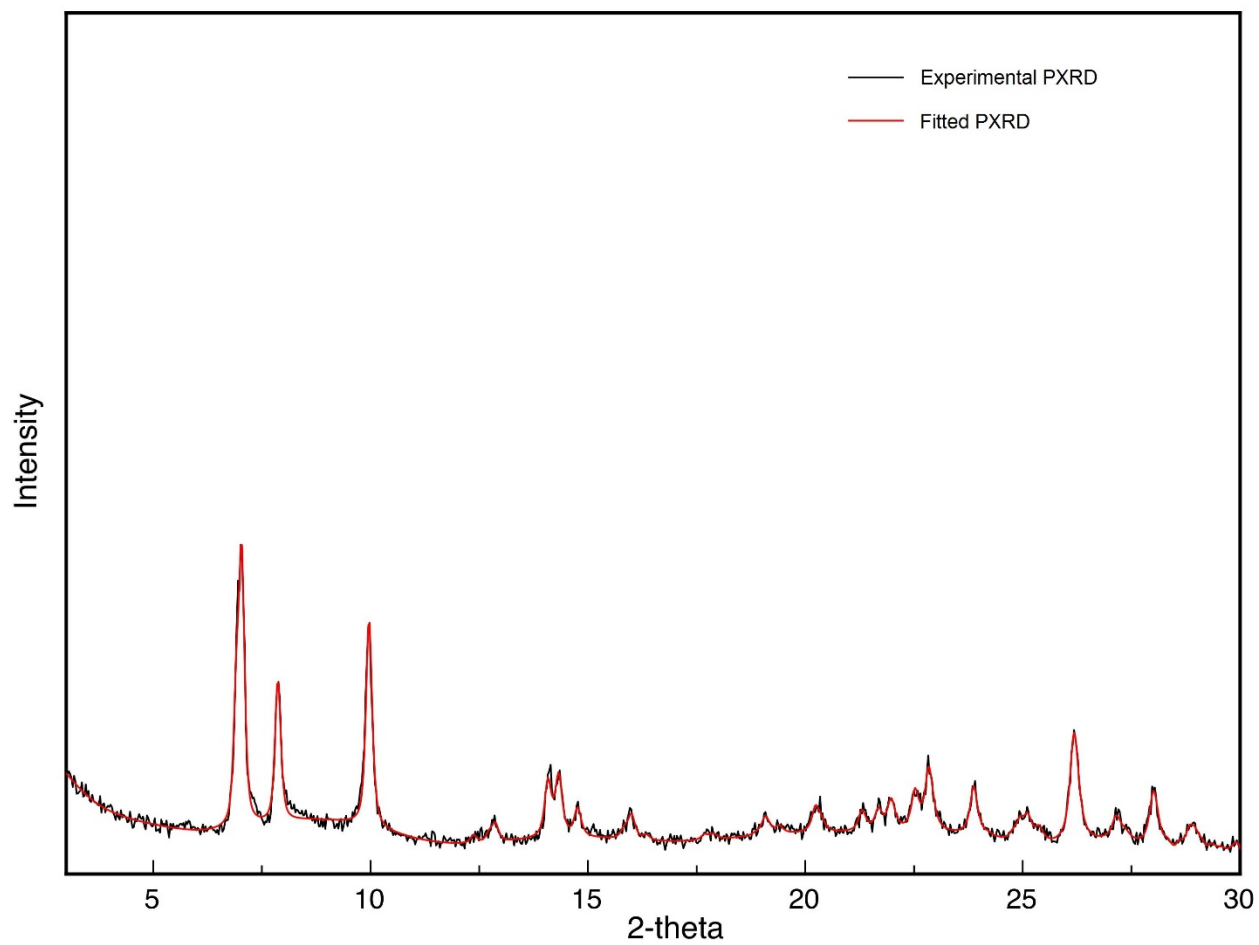


Figure S2. The whole-pattern profile-fitting of the PXRD pattern of ERB-1C. Curvefit parameters are in Table S1.

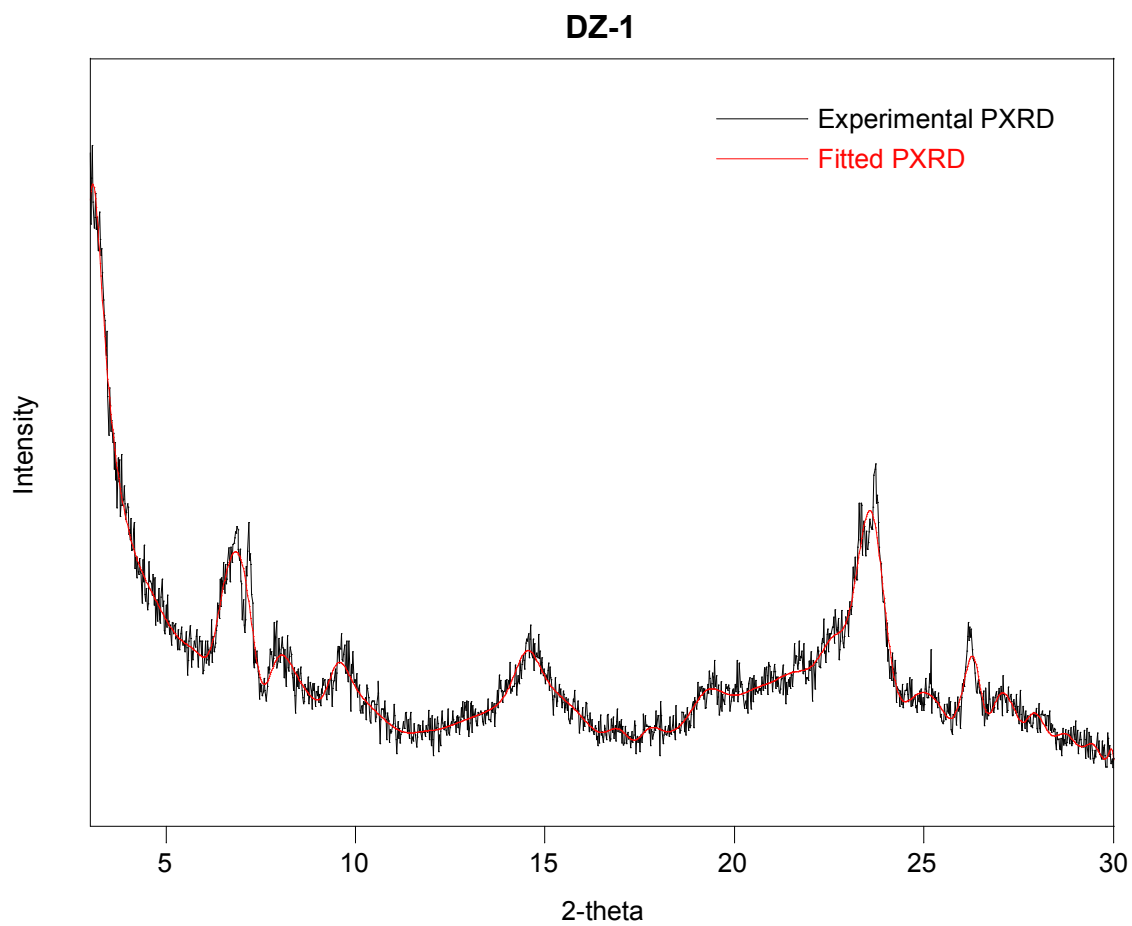


Figure S3. The whole-pattern profile-fitting of the PXR pattern of DZ-1. Curvefit parameters are in Table 1.

Ti-DZ-1

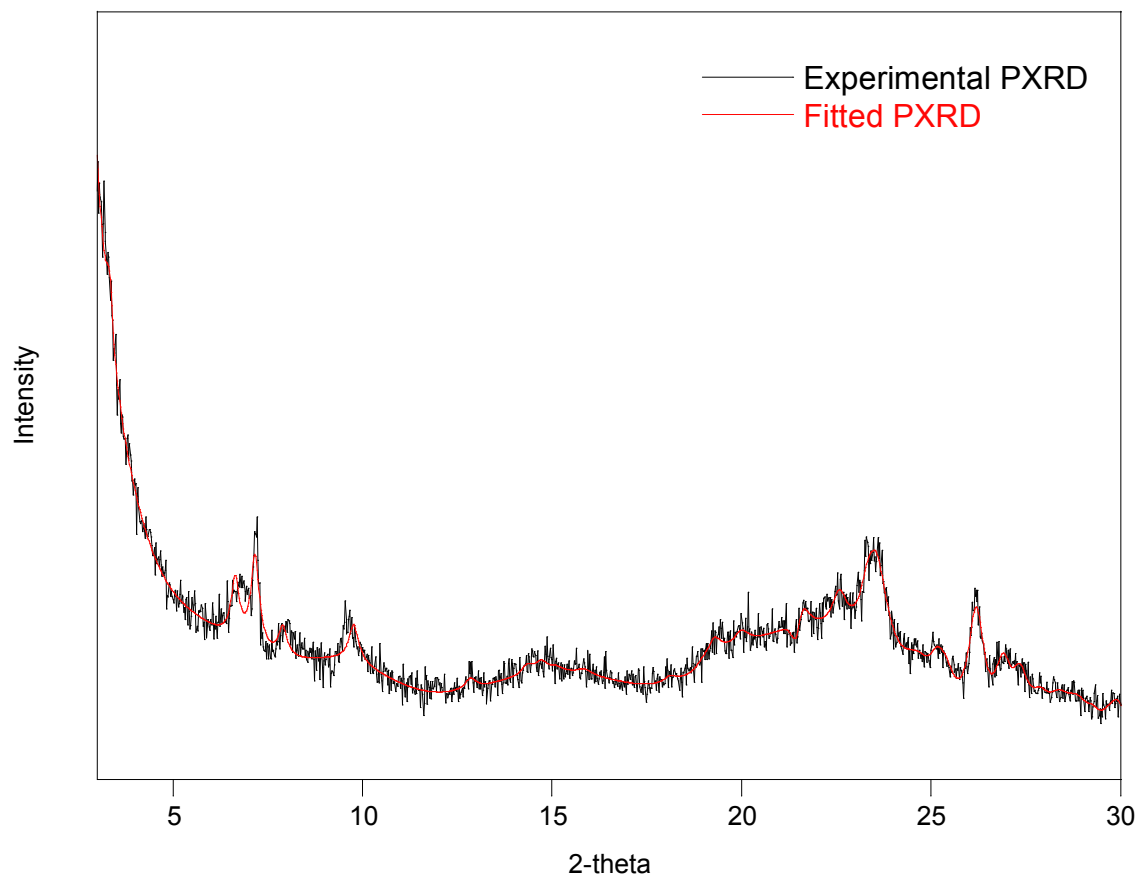


Figure S4. The whole-pattern profile-fitting of the PXR pattern of Ti-DZ-1. Curvefit parameters are in Table 1.

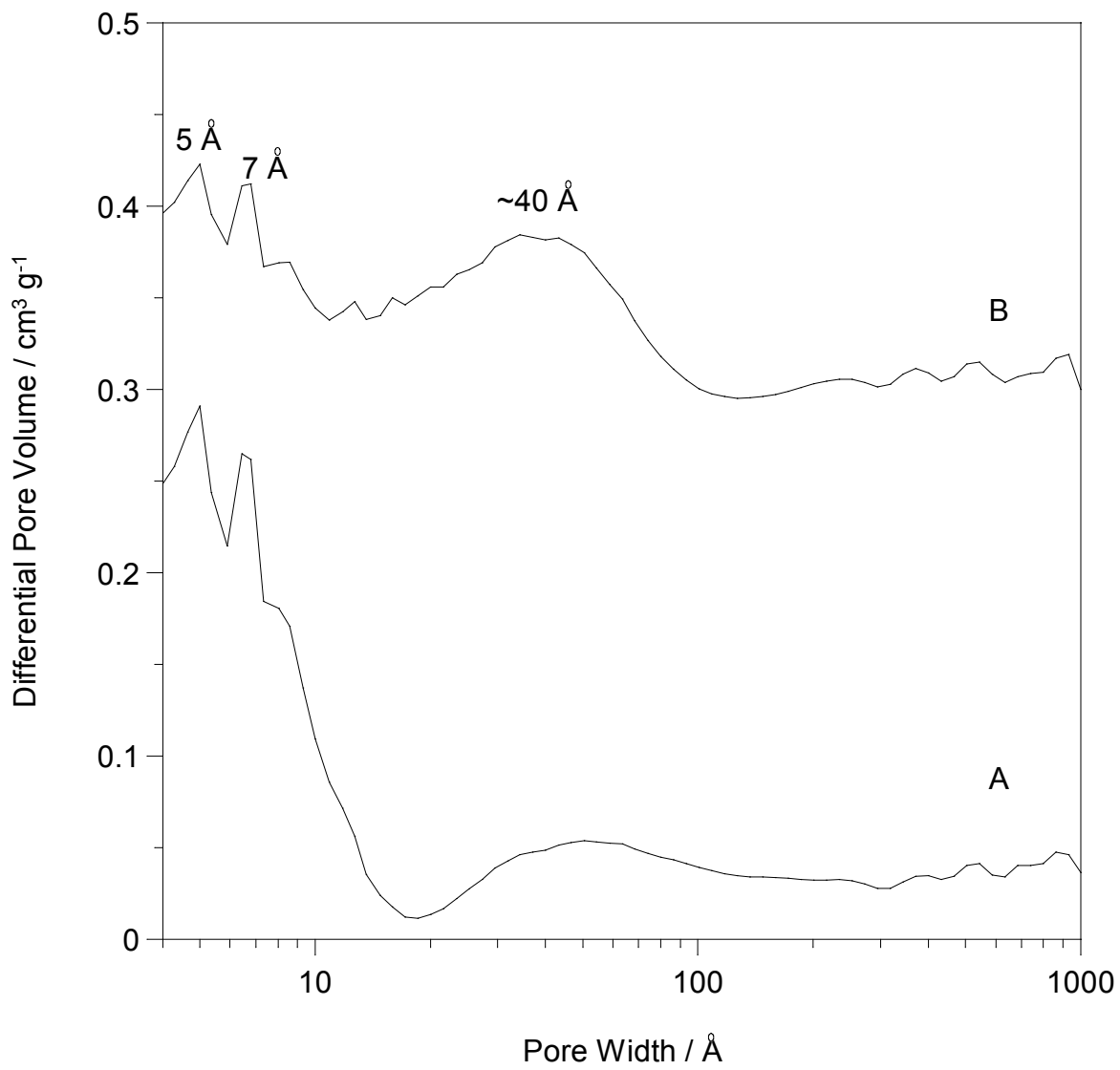


Figure S5. N₂ NLDFT differential pore volume plots over pore width distributions up to 1000 Å for (A) ERB-1C and (B) ERB-1-del-135.

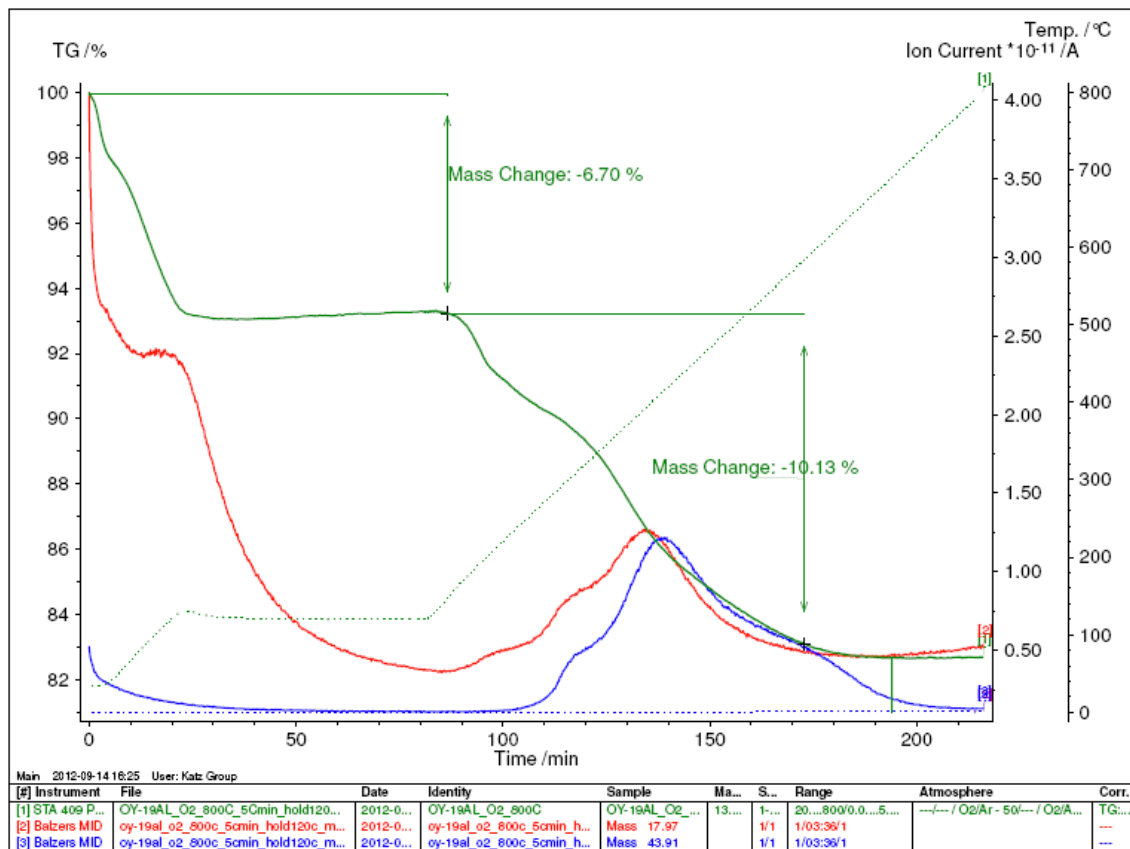


Figure S6. TGA data of ERB-1P. $m/z = 43.91$ (blue); $m/z = 17.97$ (red)

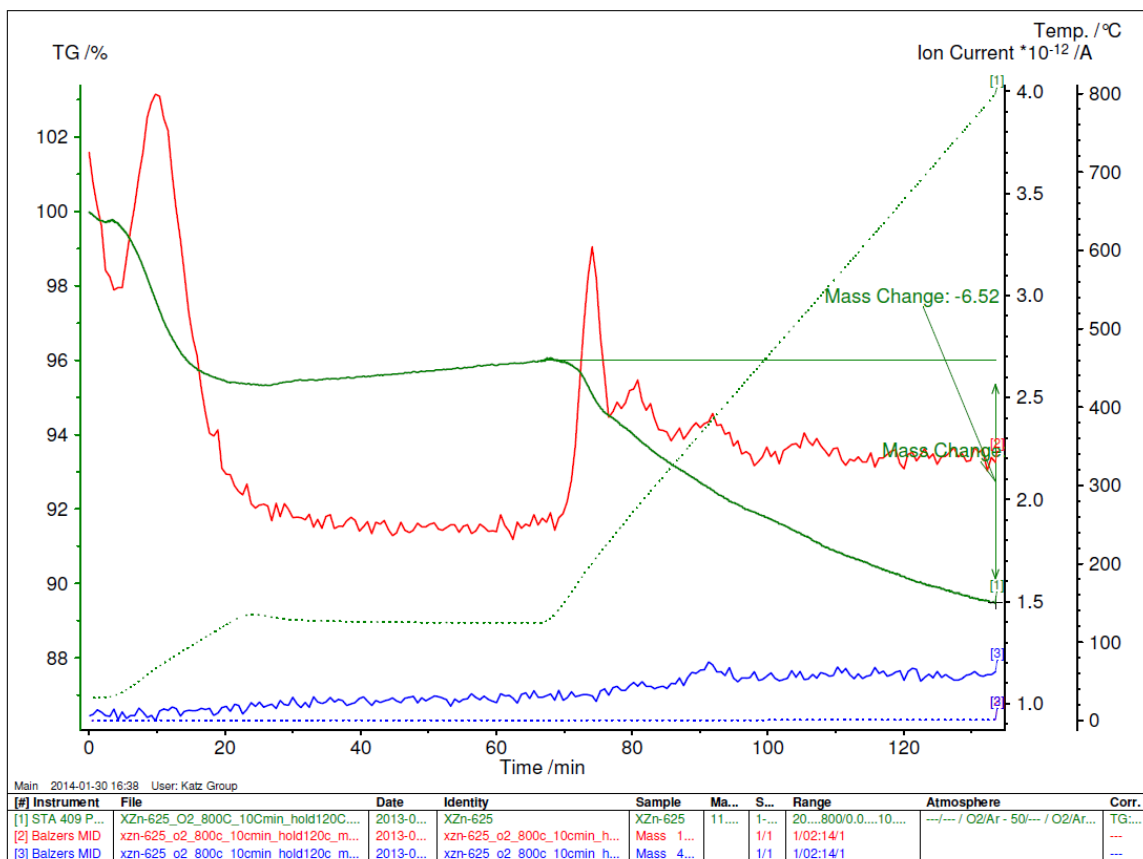


Figure S7. TGA data of DZ-1. $m/z = 43.91$ (blue); $m/z = 17.97$ (red)