

Electronic Supplementary Information

Ethyleneglycol Tungsten Complexes of calix[6 and 8]arenes: Synthesis, Characterization and ROP of ϵ -caprolactone

Yuanzhuo Li,^a Ke-Qing Zhao,^a Chun Feng,^a Mark R.J. Elsegood,^b Timothy J. Prior,^c Xinsen Sun,^c
and Carl Redshaw^{a,c*}

^a College of Chemistry and Materials Science, Sichuan Normal University, Chengdu, 610066, China.

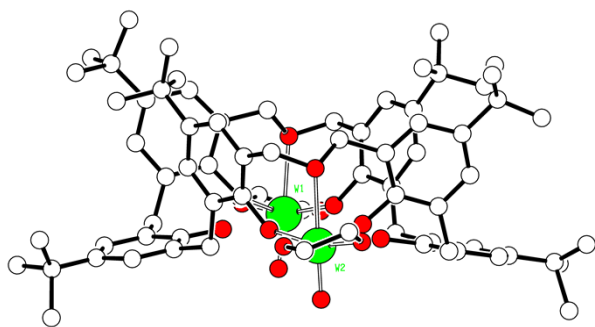
^b Chemistry Department, Loughborough University, Leicestershire, LE11 3TU, UK

^c Department of Chemistry, University of Hull, Hull, HU6 7RX, UK

Figure S1. Crystals of sample 3



Figure S2. Side view of 5



PCL data:

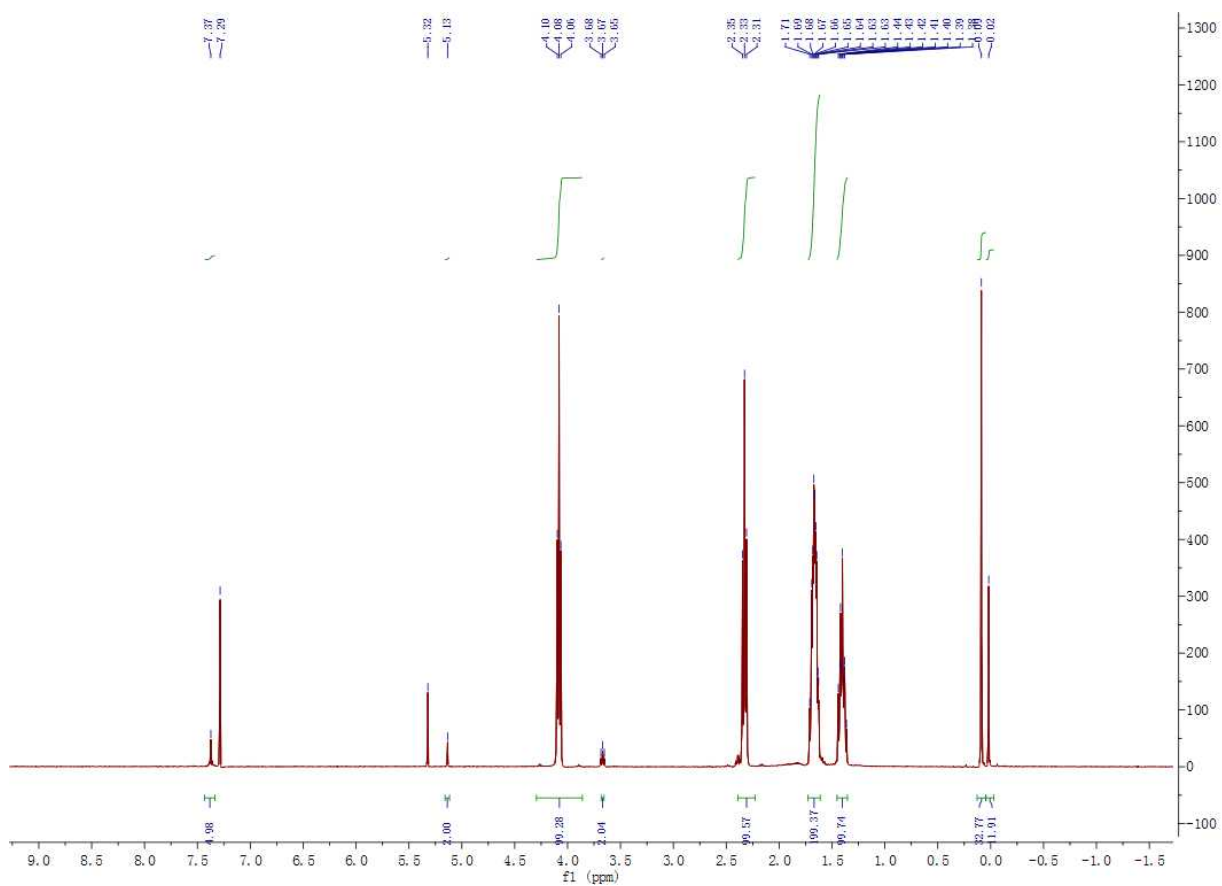


Figure S3. ^1H NMR spectrum of PCL in CDCl_3 catalyzed by tungsten pre-catalyst **1** with BnOH.

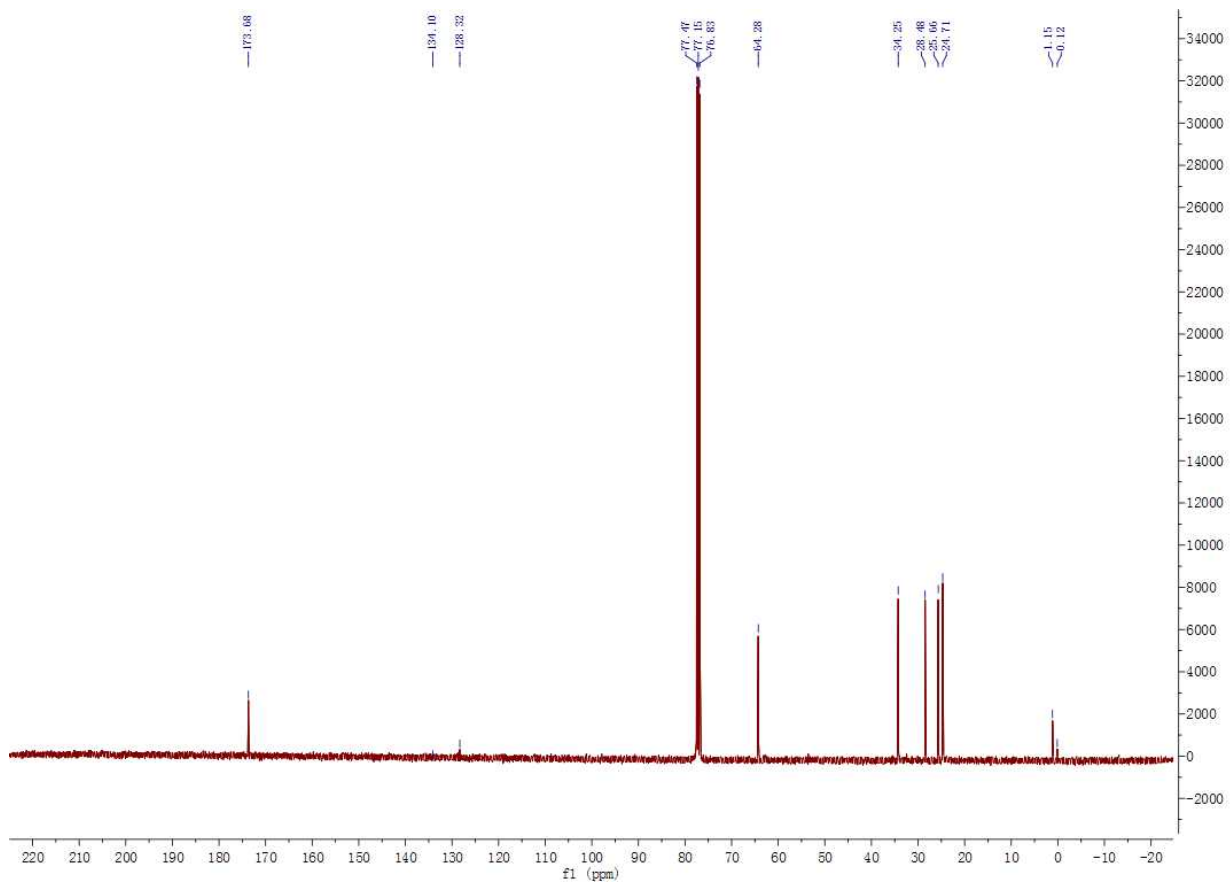


Figure S4. ^{13}C NMR spectrum of PCL in CDCl_3 catalyzed by tungsten pre-catalyst **1** with BnOH.

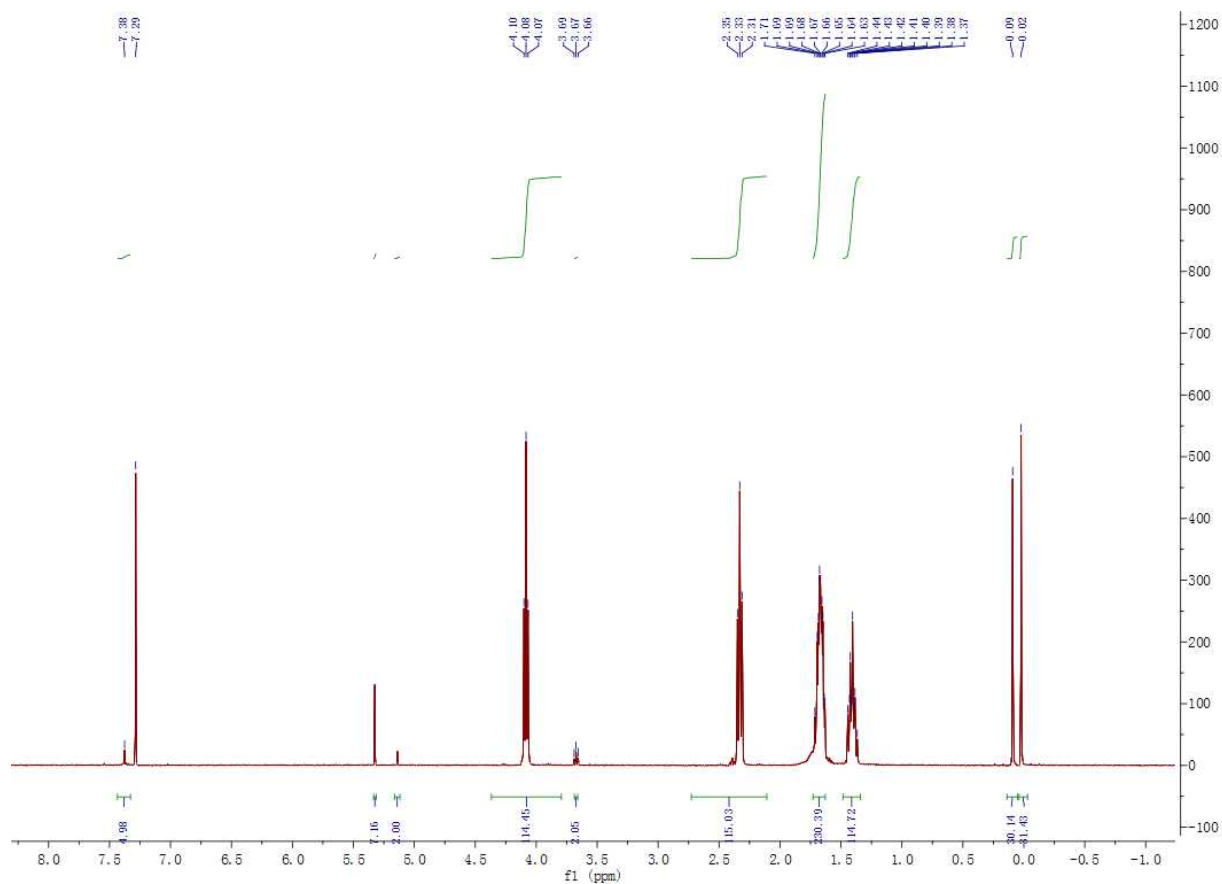


Figure S5. ^1H NMR spectrum of PCL in CDCl_3 catalyzed by tungsten pre-catalyst **2** with BnOH.

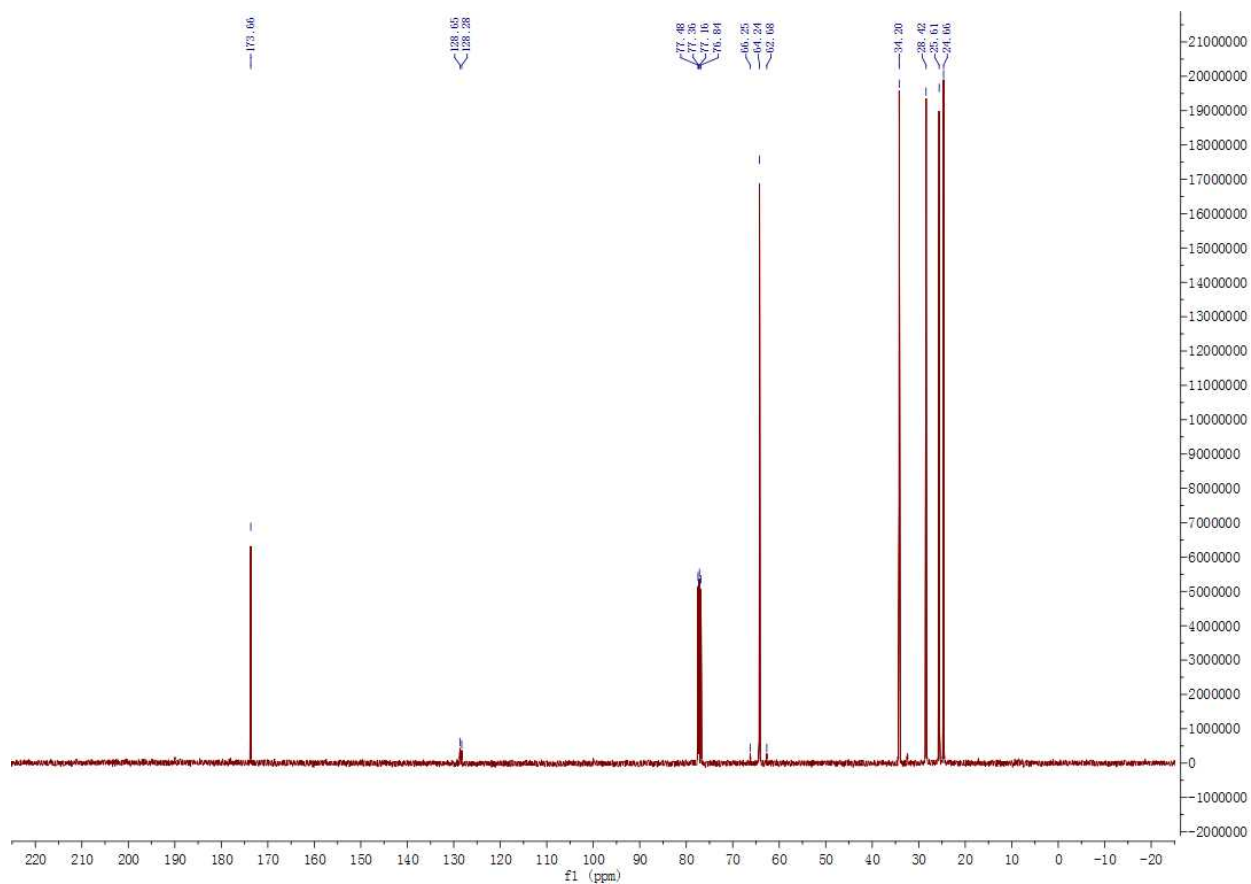


Figure S6. ^{13}C NMR spectrum of PCL in CDCl_3 catalyzed by tungsten pre-catalyst **2** with BnOH.

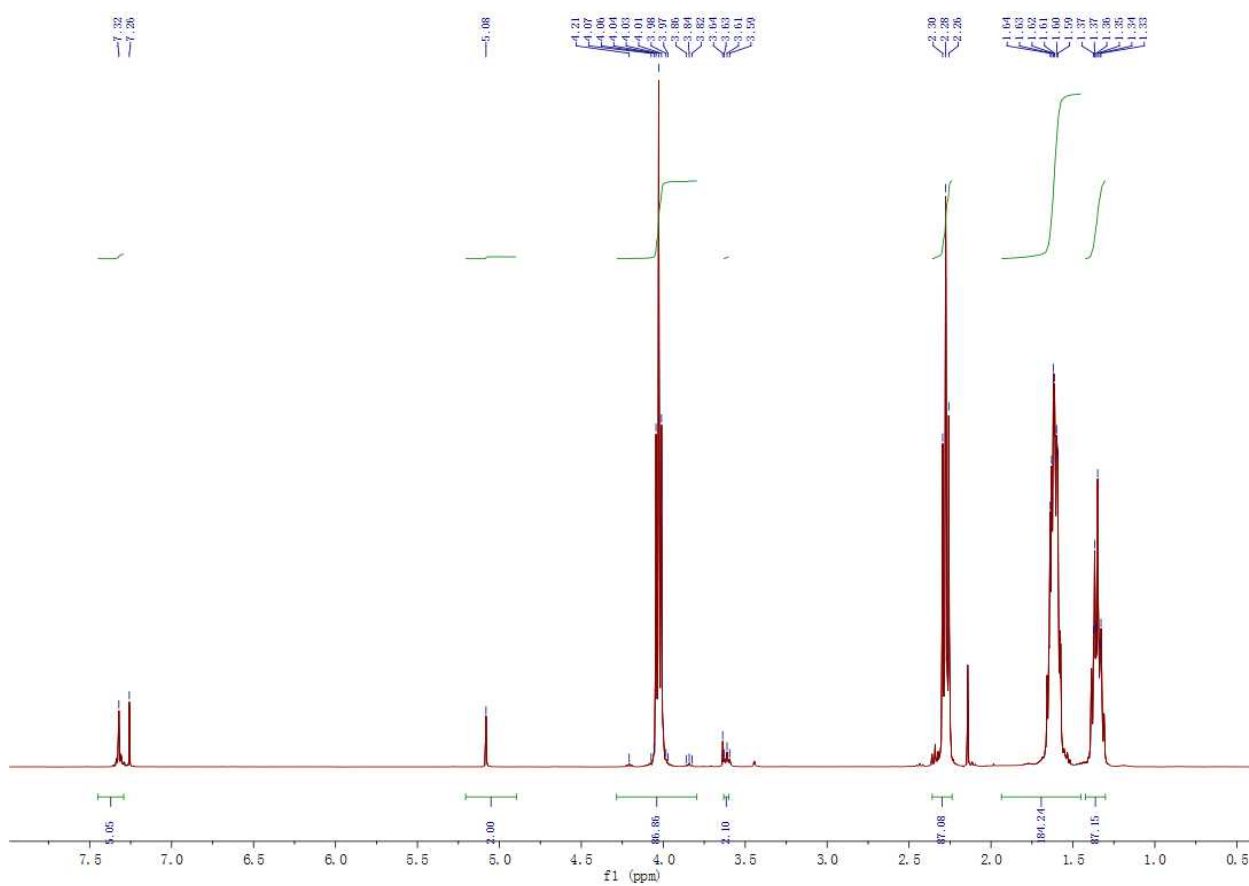


Figure S7. ^1H NMR spectrum of PCL in CDCl_3 catalyzed by tungsten pre-catalyst **5** with BnOH.

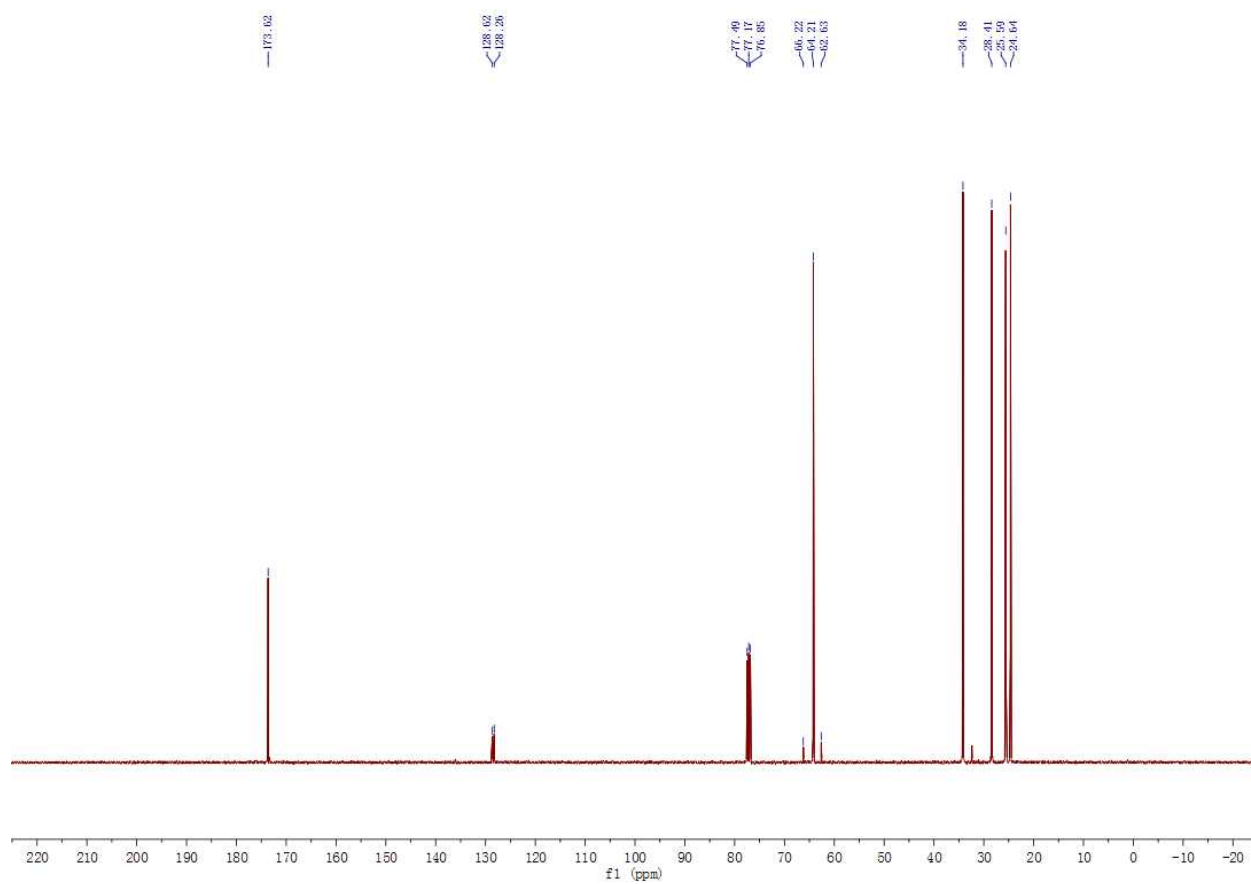


Figure S8. ^{13}C NMR spectrum of PCL in CDCl_3 catalyzed by tungsten pre-catalyst **5** with BnOH.

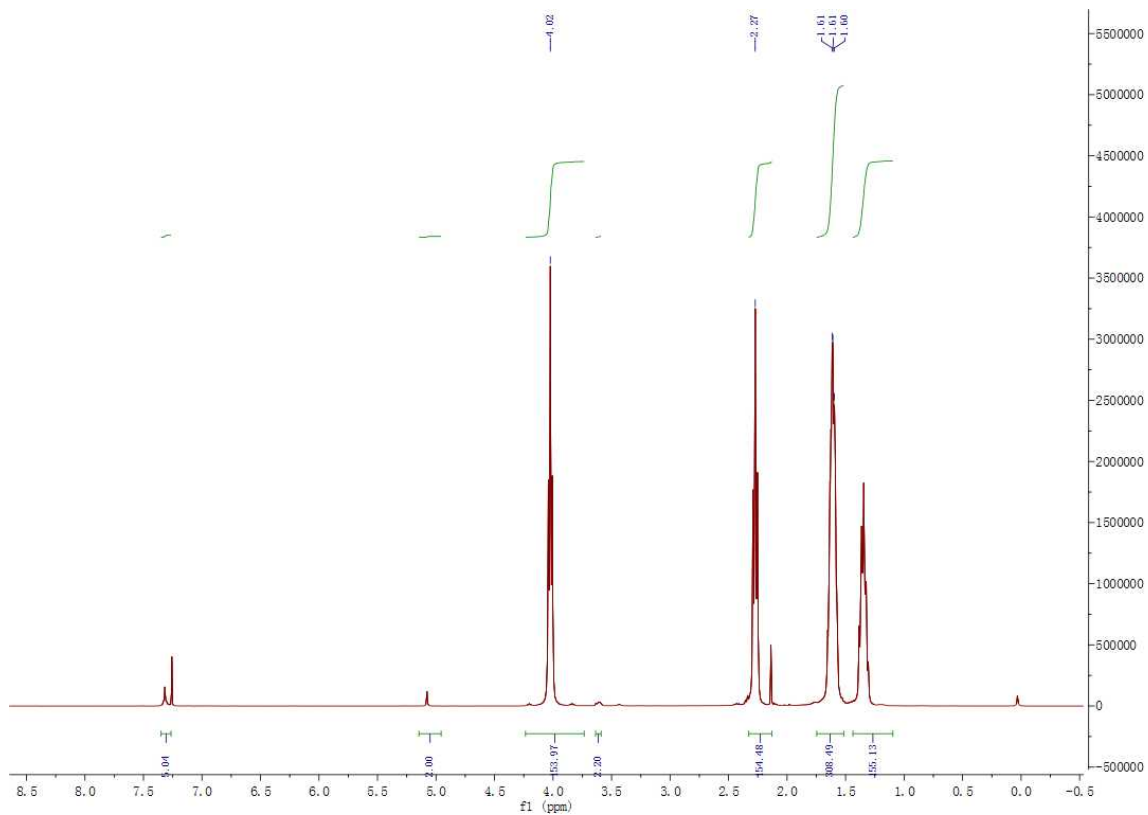


Figure S9. ^1H NMR spectrum of PCL in CDCl_3 catalyzed by tungsten pre-catalyst **6** with BnOH.

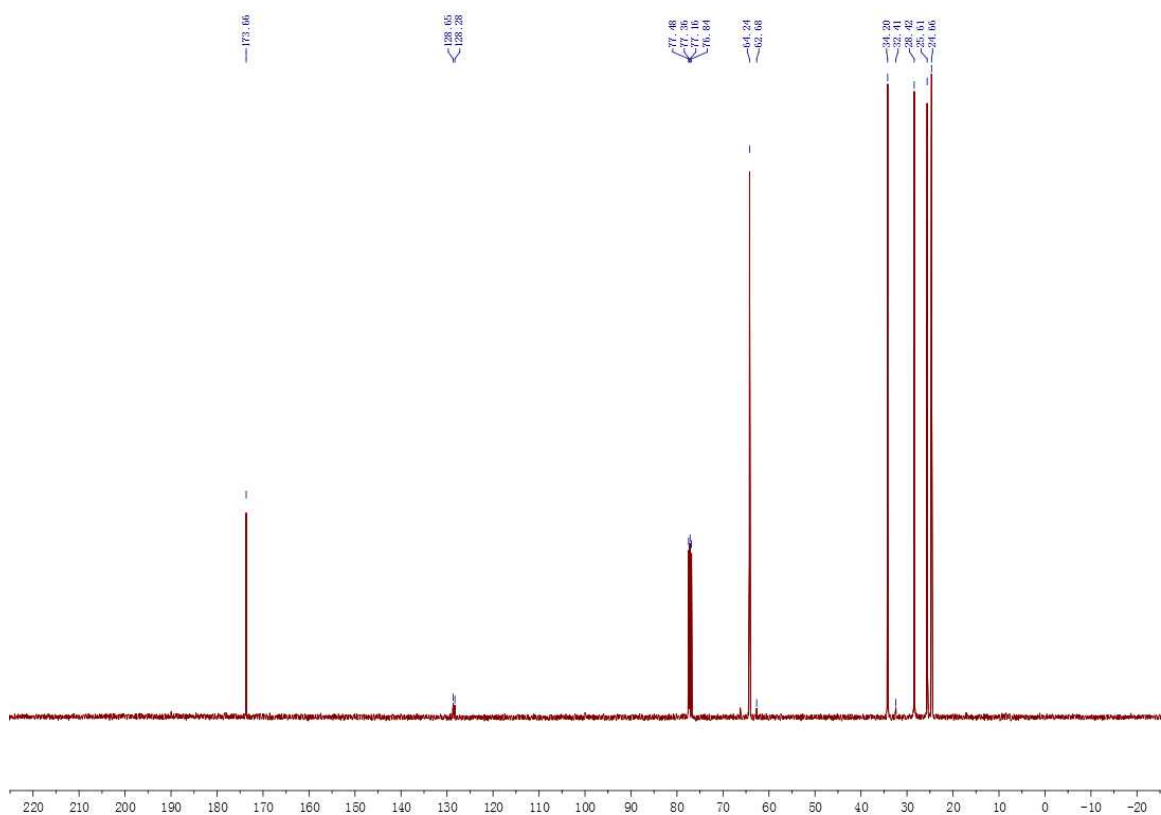


Figure S10. ^{13}C NMR spectrum of PCL in CDCl_3 catalyzed by tungsten pre-catalyst **6** with BnOH.

MALDI-TOF,DHB+Na,2,20140520

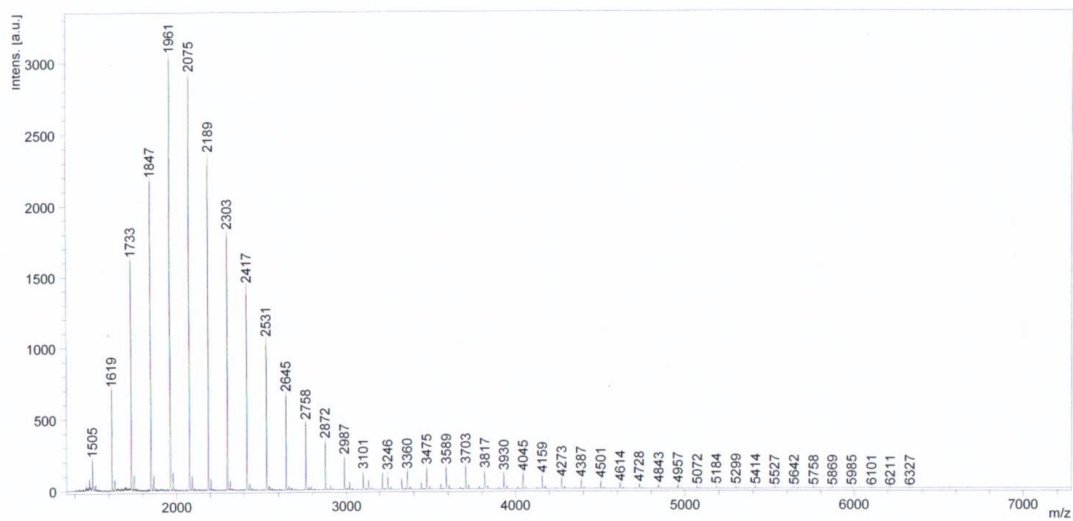


Figure S11. MALDI-TOF mass spectrum of PCL initiated by **2** in toluene at 110 °C, [CL]/[**2**]/[BnOH] =400:1:1 (Table 2, entry 3). $114.14 \cdot n + 108 + 1 + 22$ for BnO-(CL)_n-H+Na

MALDI-TOF,DHB+Na,1,20140520

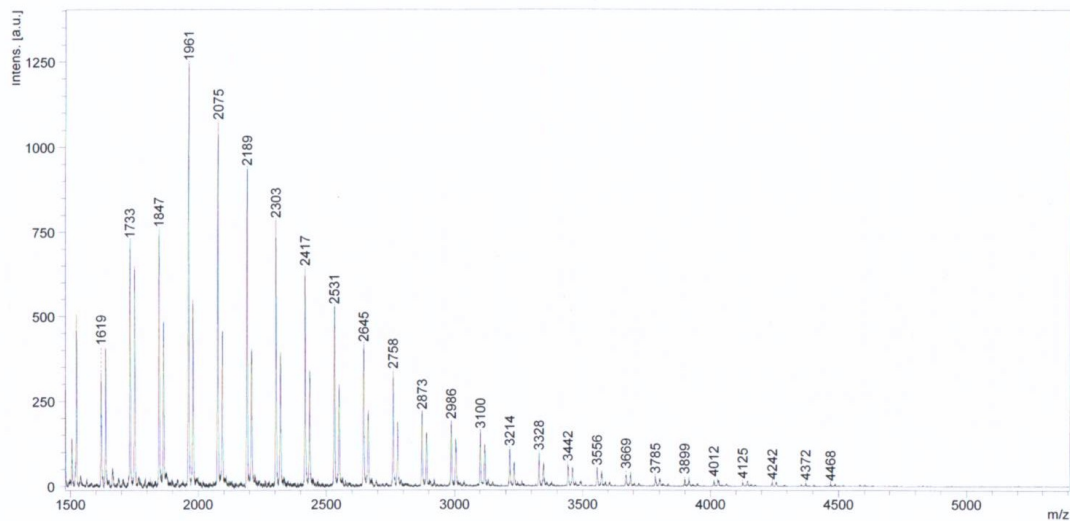


Figure S12. MALDI-TOF mass spectrum of PCL initiated by **5** in toluene at 110 °C, [CL]/[**5**]/[BnOH] =400:1:1 (Table 2, entry 5). $114.14 \cdot n + 108 + 1 + 22$ for BnO-(CL)_n-H+Na

MALDI-TOF,CCA,w4,20140617

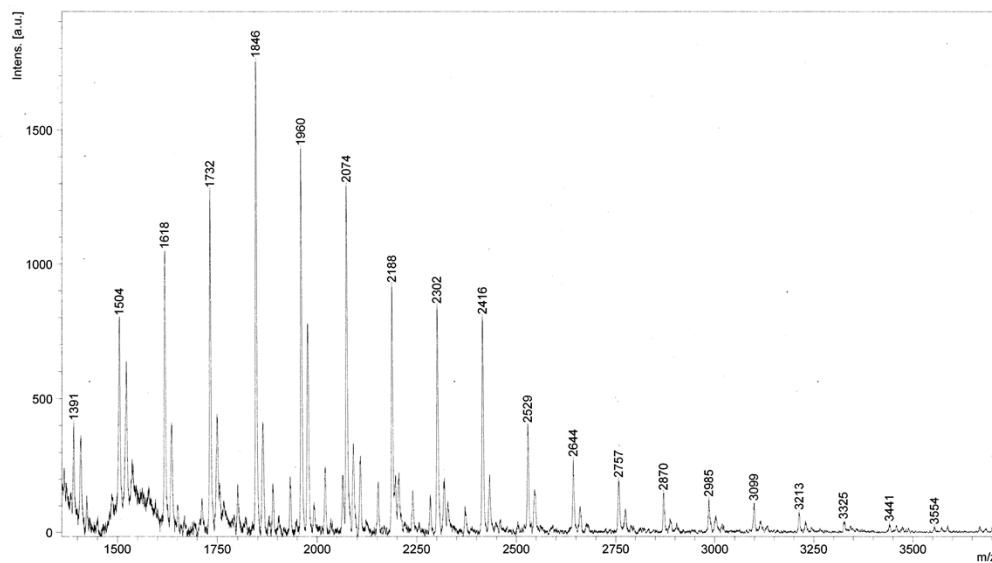


Figure S13. MALDI-TOF mass spectrum of PCL initiated by **6** in toluene at 110 °C, [CL]/[**6**]/[BnOH] =400:1:1 (Table 2, entry 6). $114.14 \cdot n + 108 + 1 + 22$ for BnO-(CL) $_n$ -H+Na