

Supplementary Information

(Supplementary Information-I)

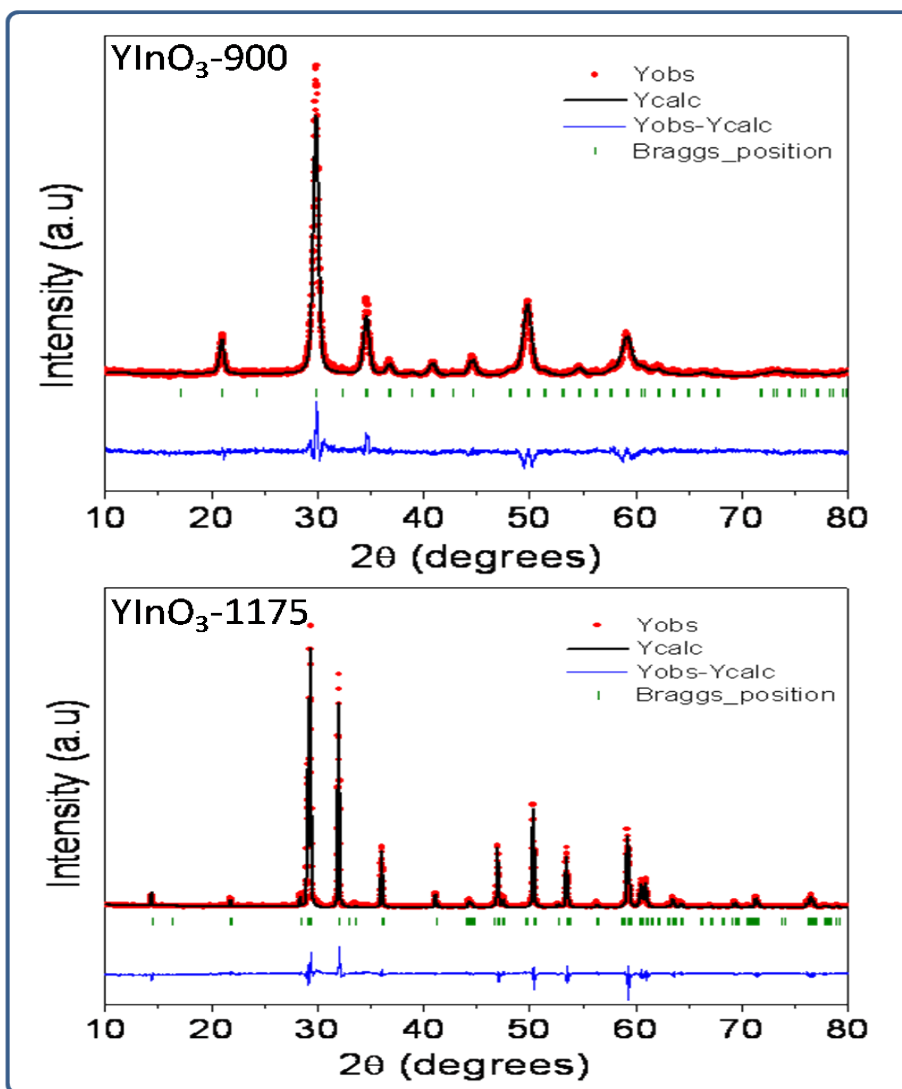


Fig S-1. The Rietveld refined XRD patterns for YInO₃- 900 (C-type) and YInO₃-1175(hexagonal)

(Supplementary Information-II)

Table S-1: Rietveld refined parameters for YInO₃ heat-treated at 900°C and 1175°C

Molecular formula	YInO ₃ -900	YInO ₃ -1175
Tolerance Factor	0.8295	
Space Group	<i>Ia-3</i>	<i>P 6₃ c m</i>
Unit cell parameter		
<i>a</i> (Å)	10.3585 (5)	6.2727 (1)
<i>b</i> (Å)	10.3585 (5)	6.2727 (1)
<i>c</i> (Å)	10.3585 (5)	12.2563 (0)
Vol (Å ³)	1111.45(9)	417.63 (9)
No of Parameters	8	10
Refinement	Rietveld refinements (Fullprof-2K) (Rodriguez- Caravjal, 2000)	
Profile	Pseudo-voigt	
Goodness-of-fit (χ^2)	2.30	1.73
R _p	20.5	10.6
R _{wp}	23.5	15.3
R _F	15.5	5.56