

**Supporting Information for Core Substituted Naphthalene Diimide – Metallo
Bisterpyridine Supramolecular Polymers: Synthesis, Photophysics and Morphology**

Hamideh Shokouhi Mehr,[‡] Natalie C. Romano,[‡] Rashid Altamimi,[†] Jody M. Modarelli,[§] David A.
Modarelli^{‡,*}

[‡]Department of Chemistry and The Center for Laser and Optical Spectroscopy, Knight Chemical
Laboratory, The University of Akron, Akron, Ohio 44325-3601, United States

[§]Department of Chemistry and Biochemistry, Hiram College, Hiram, Ohio 44234, United States

[†]Petrochemicals Research Institute, King Abdulaziz City for Science and Technology, P.O. Box
6086, Riyadh 11442, Saudi Arabia

8 PAGES

TABLE OF CONTENTS

- 1) SEM (a), TEM (b) and AFM (c) images of **5-Ru** showing the rod-shaped structures formed upon deposition onto a solid support (Figure S1).
- 2) SEM (a), TEM (b) and AFM (c) images of **5-Fe** showing the rod-shaped structures formed upon deposition onto a solid support (Figure S2).
- 3) SEM (a), TEM (b) and AFM (c) images of **5-Co** showing the short rod-shaped structures formed upon deposition onto a solid support (Figure S3).
- 4) SEM (a), TEM (b) and AFM (c) images of **7-Ru** showing the rod-shaped structures formed upon deposition onto a solid support (Figure S4).
- 5) SEM (a), TEM (b) and AFM (c) images of **7-Fe** showing the spherical and thin fiber-like structures formed upon deposition onto a solid support (Figure S5).

6) SEM (a), TEM (b) and AFM (c) images of **7-Co** showing the spherical and thin fiber-like structures formed upon deposition onto a solid support (Figure S6).

7) Fluorescence spectra of ligands **5** and **7** in DMF with excitation at λ_{ex} 380 nm (Figure S7).

Figure 1. SEM (a), TEM (b) and AFM (c) images of **5-Ru** showing the rod-shaped structures formed upon deposition onto a solid support.

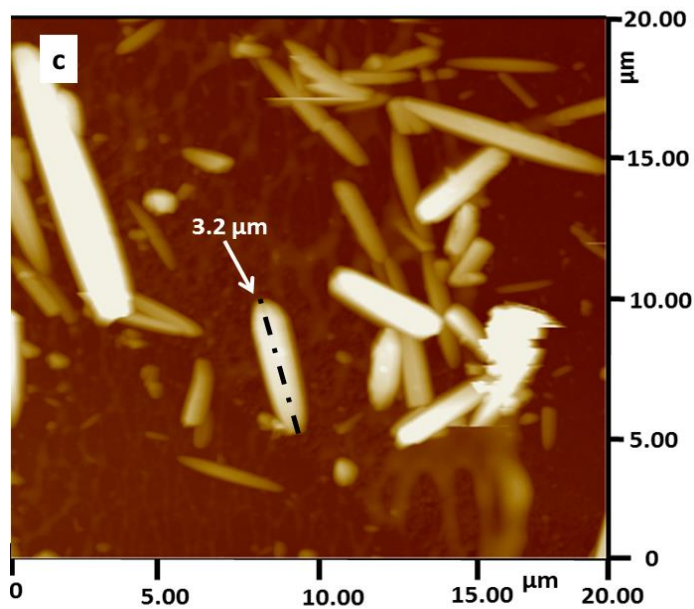
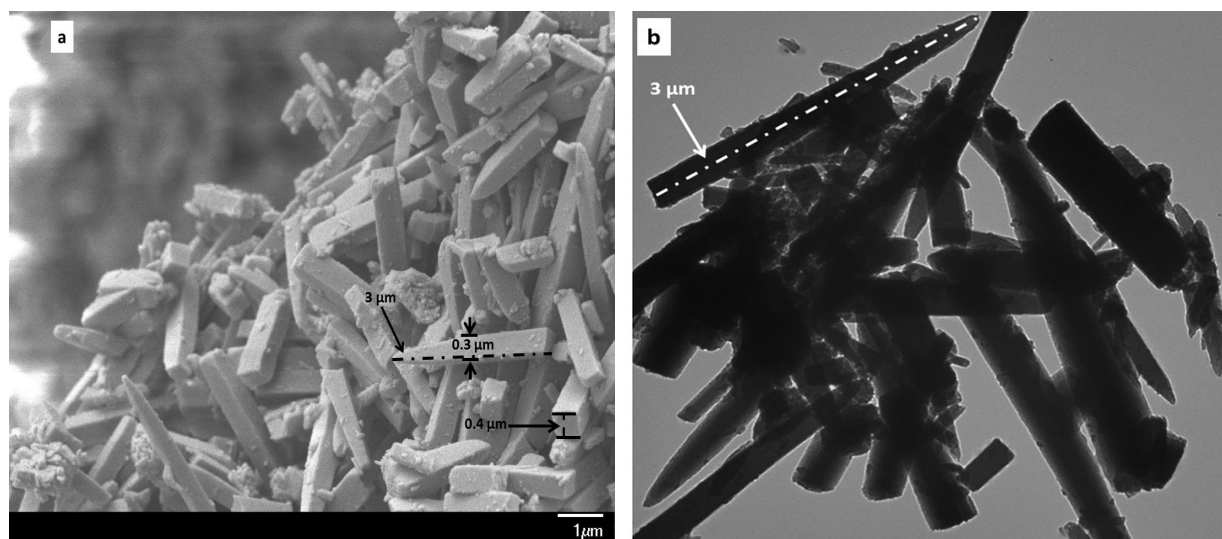


Figure 2. SEM (a), TEM (b) and AFM (c) images of **5-Fe** showing the rod-shaped structures formed upon deposition onto a solid support.

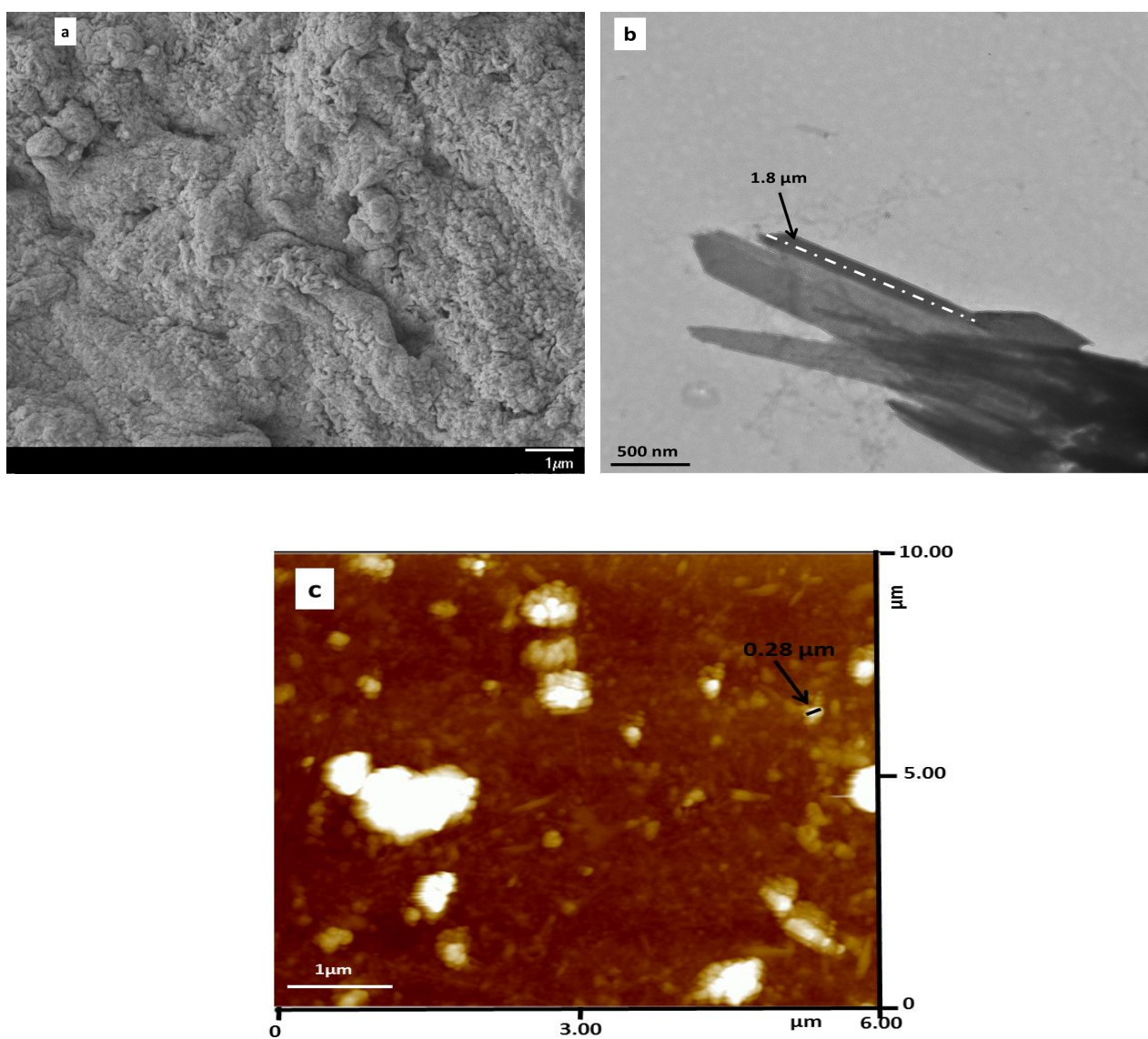


Figure 3. SEM (a), TEM (b) and AFM (c) images of **5-Co** showing the short rod-shaped structures formed upon deposition onto a solid support.

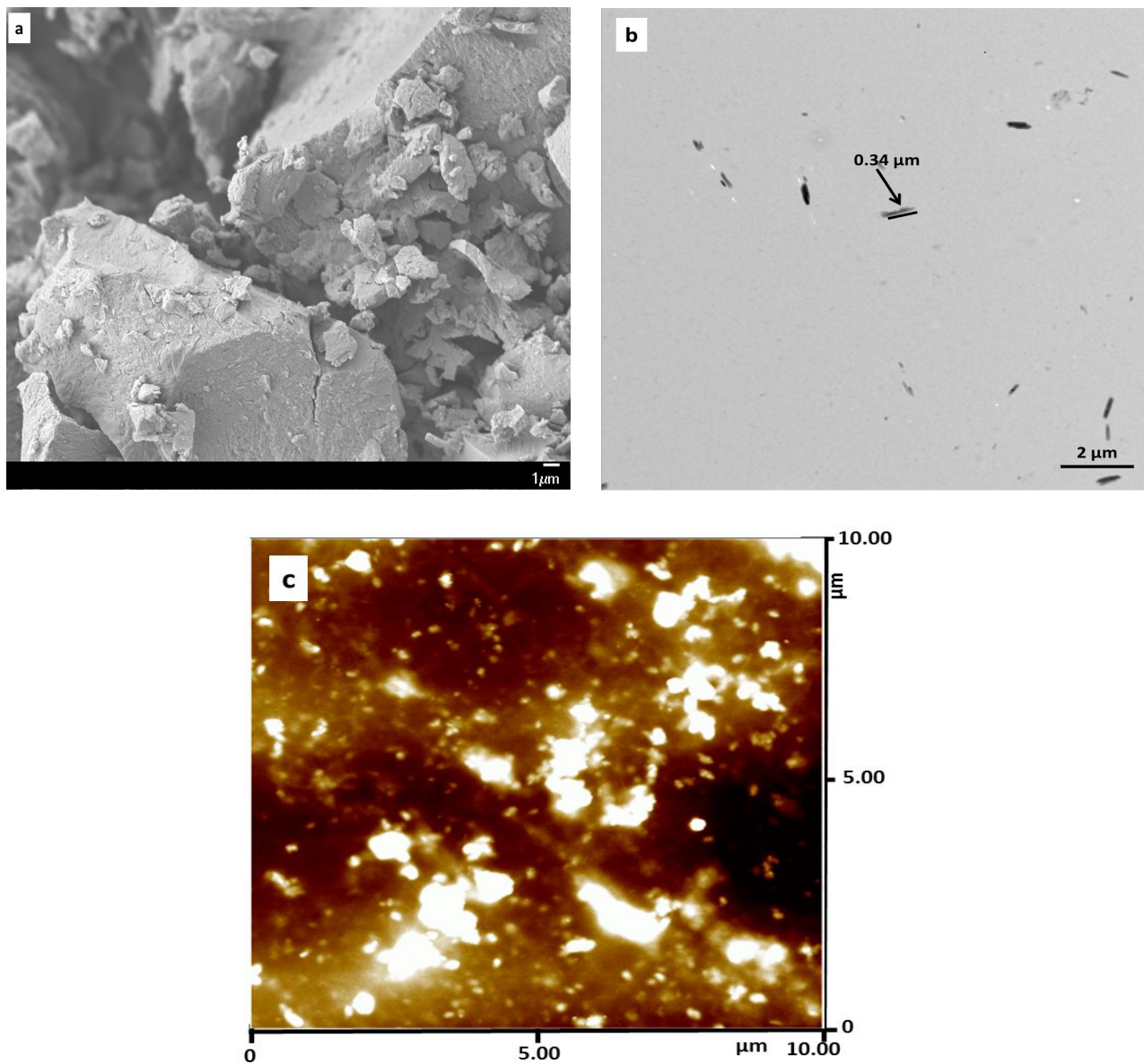


Figure 4. SEM (a), TEM (b) and AFM (c) images of **7-Ru** showing the rod-shaped structures formed upon deposition onto a solid support.

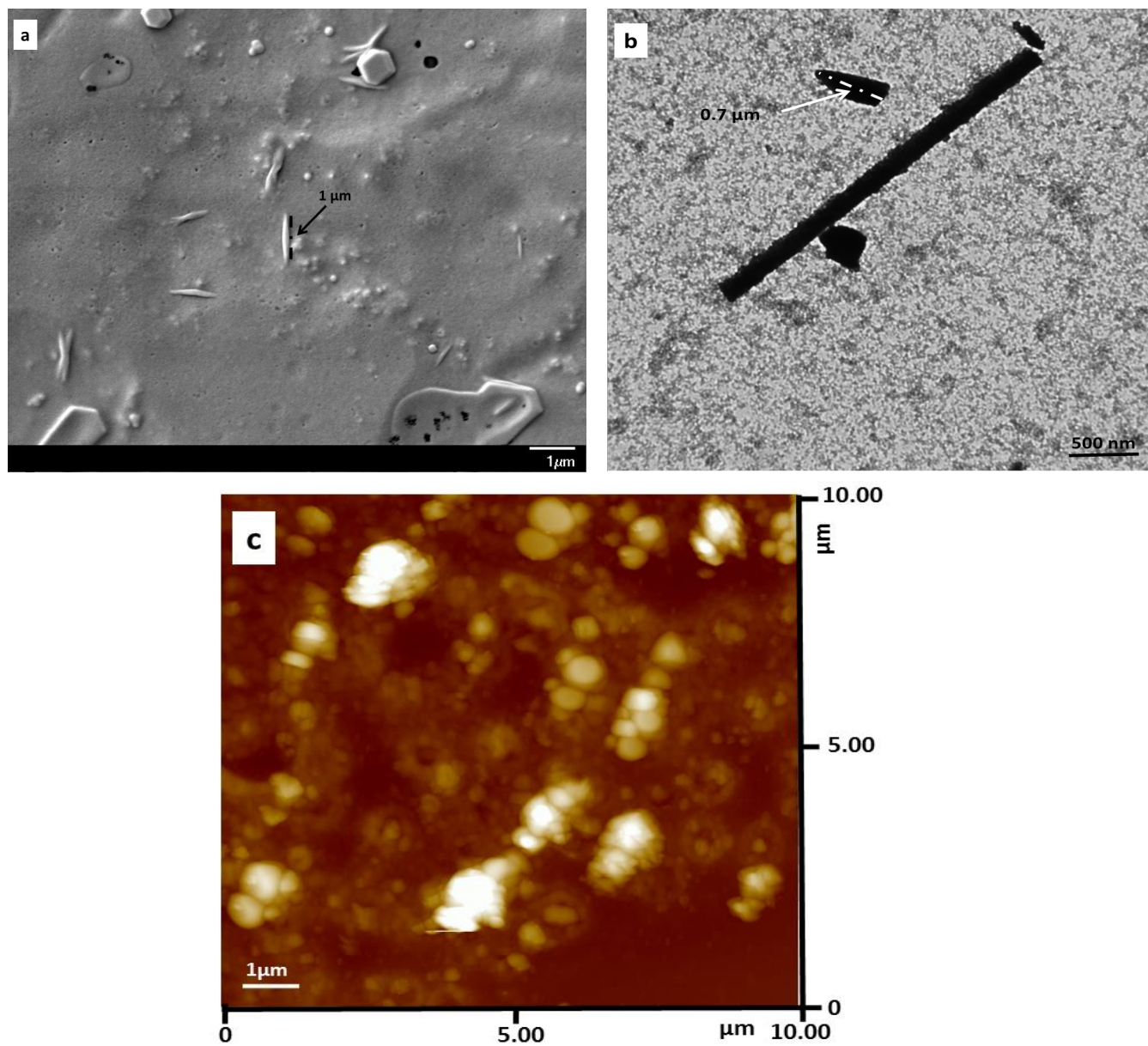


Figure 5. SEM (a), TEM (b) and AFM (c) images of **7-Fe** showing the spherical and thin fiber-like structures formed upon deposition onto a solid support.

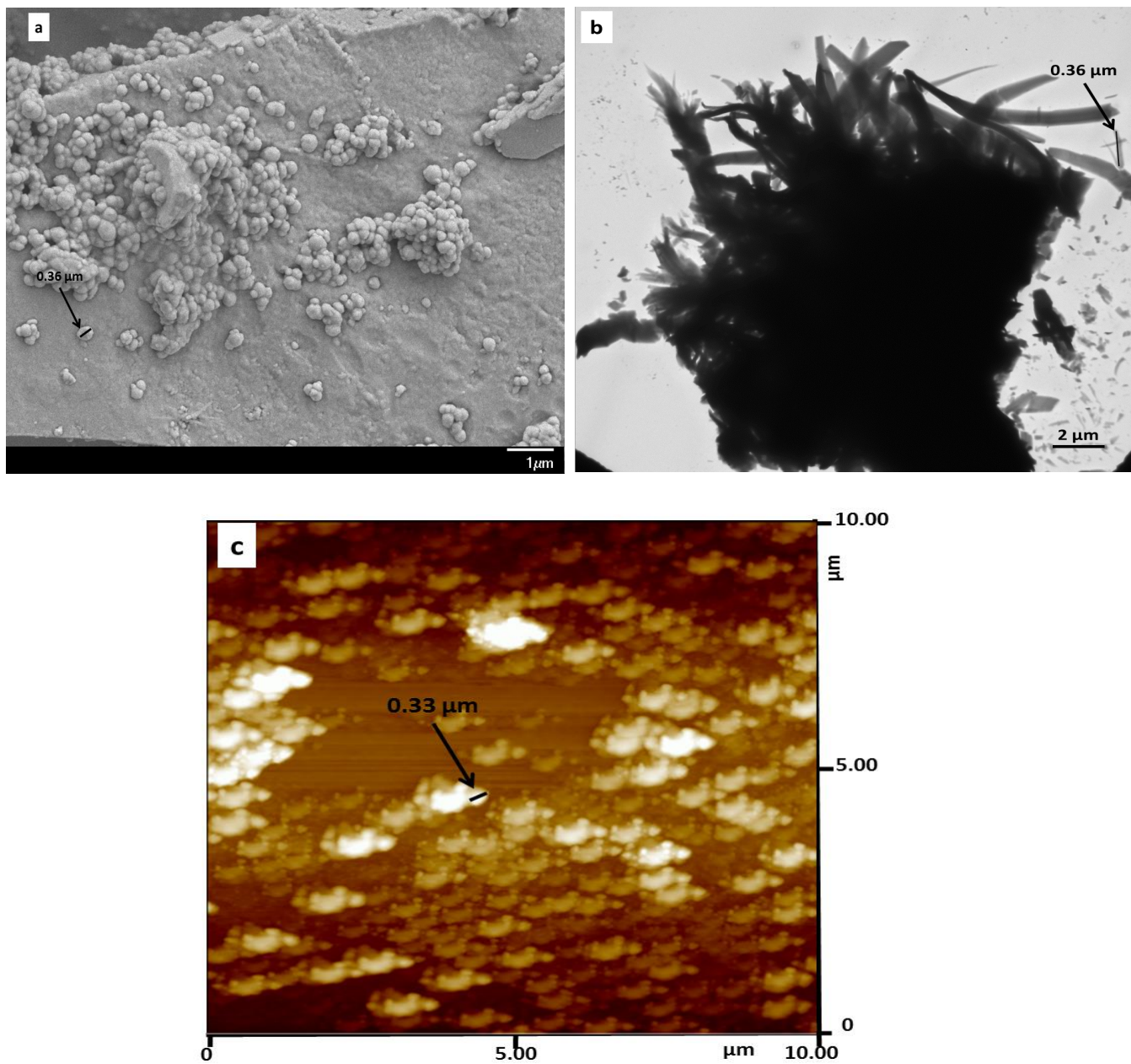


Figure 6. SEM (a), TEM (b) and AFM (c) images of **7-Co** showing the spherical and thin fiber-like structures formed upon deposition onto a solid support.

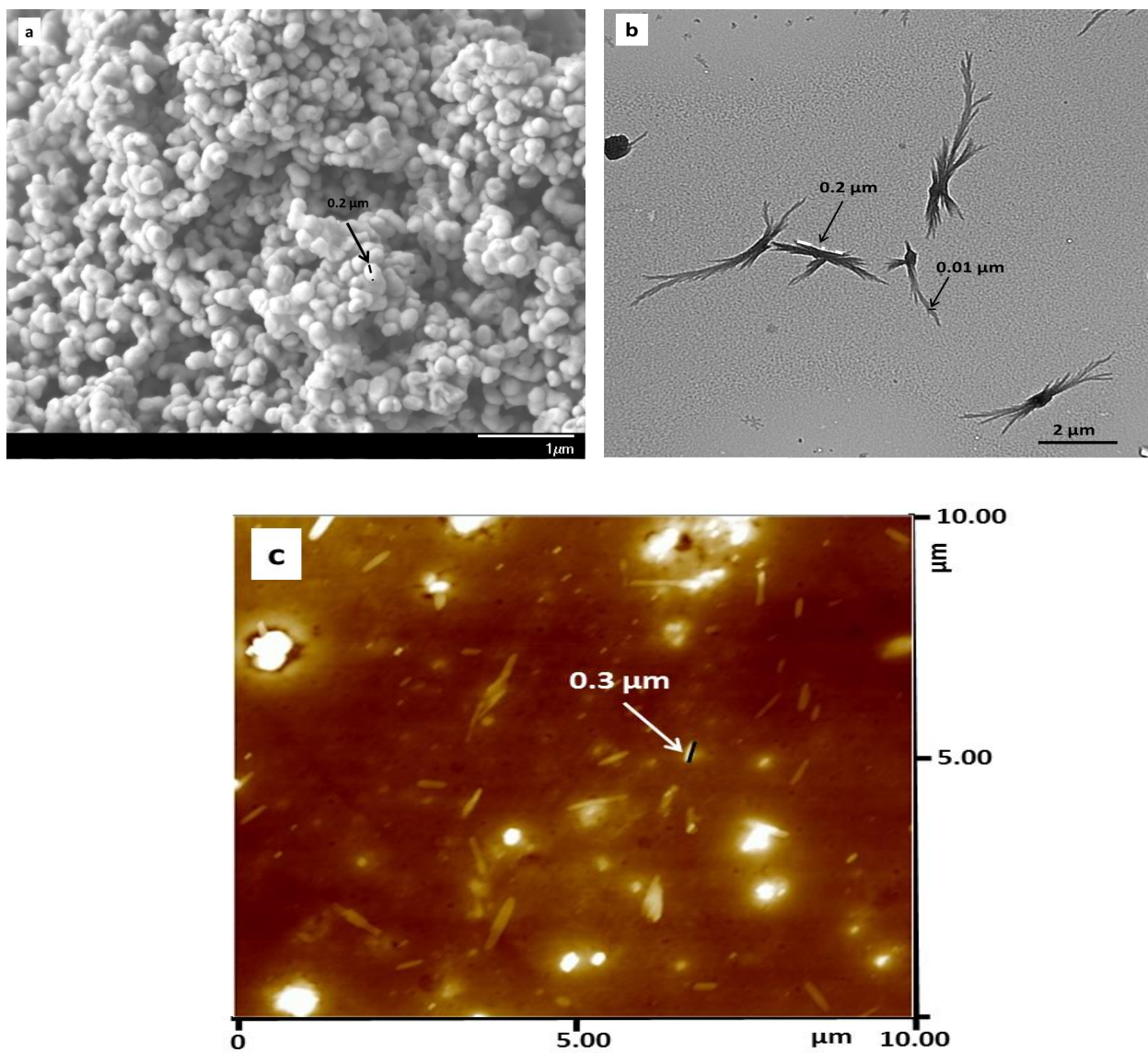


Figure 7. Fluorescence spectra of ligands **5** and **7** in DMF with excitation at λ_{ex} 380 nm.

